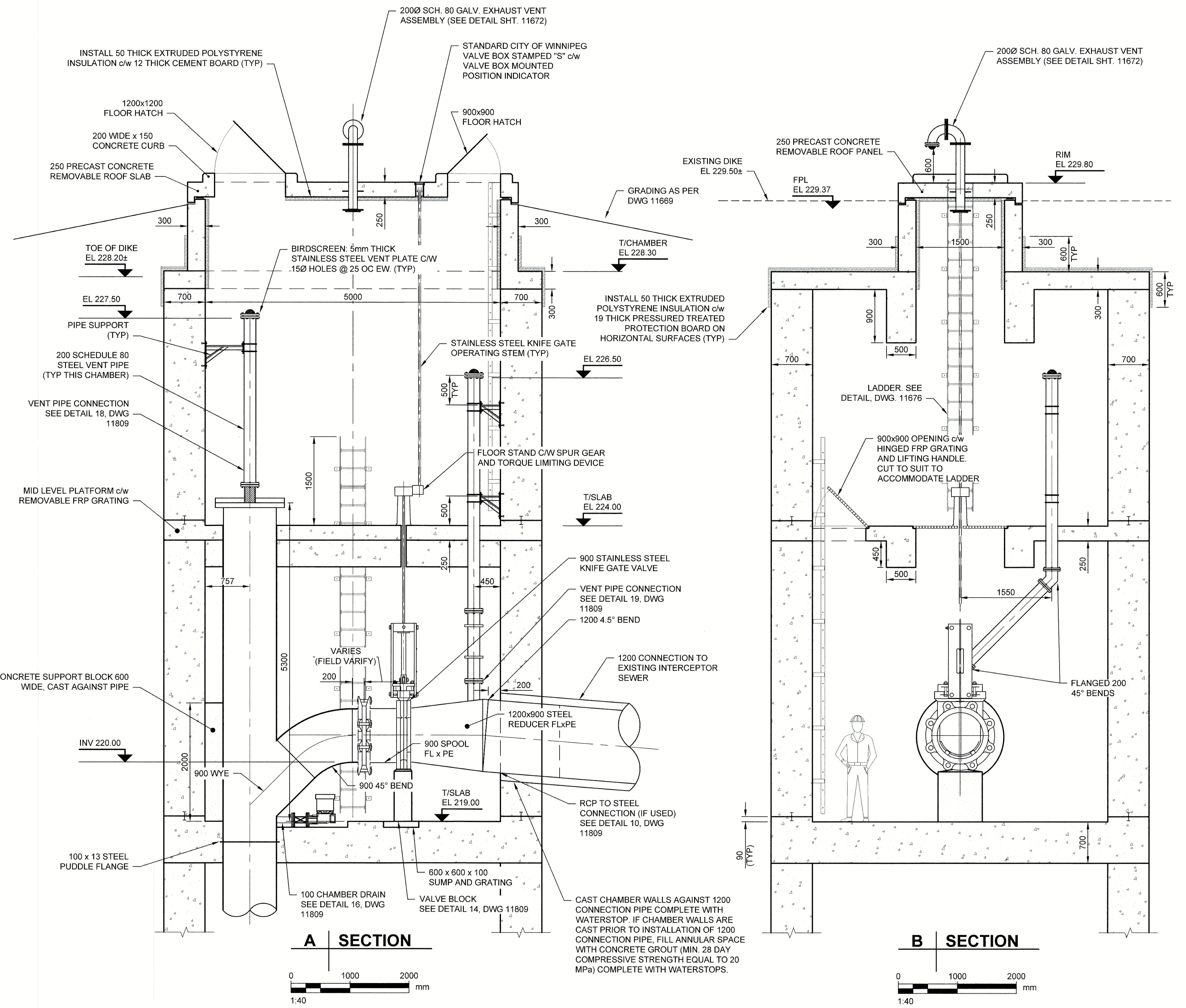
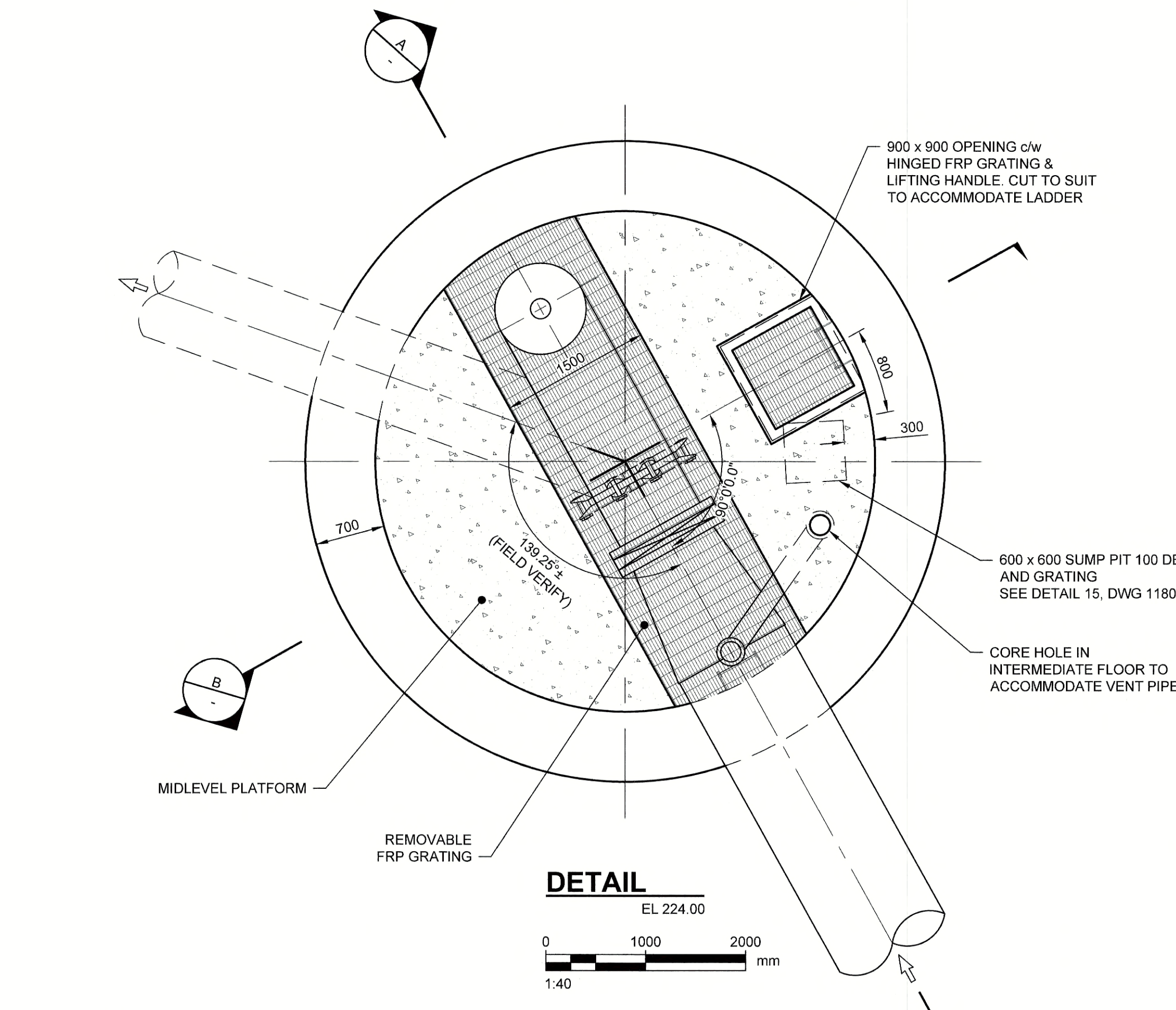
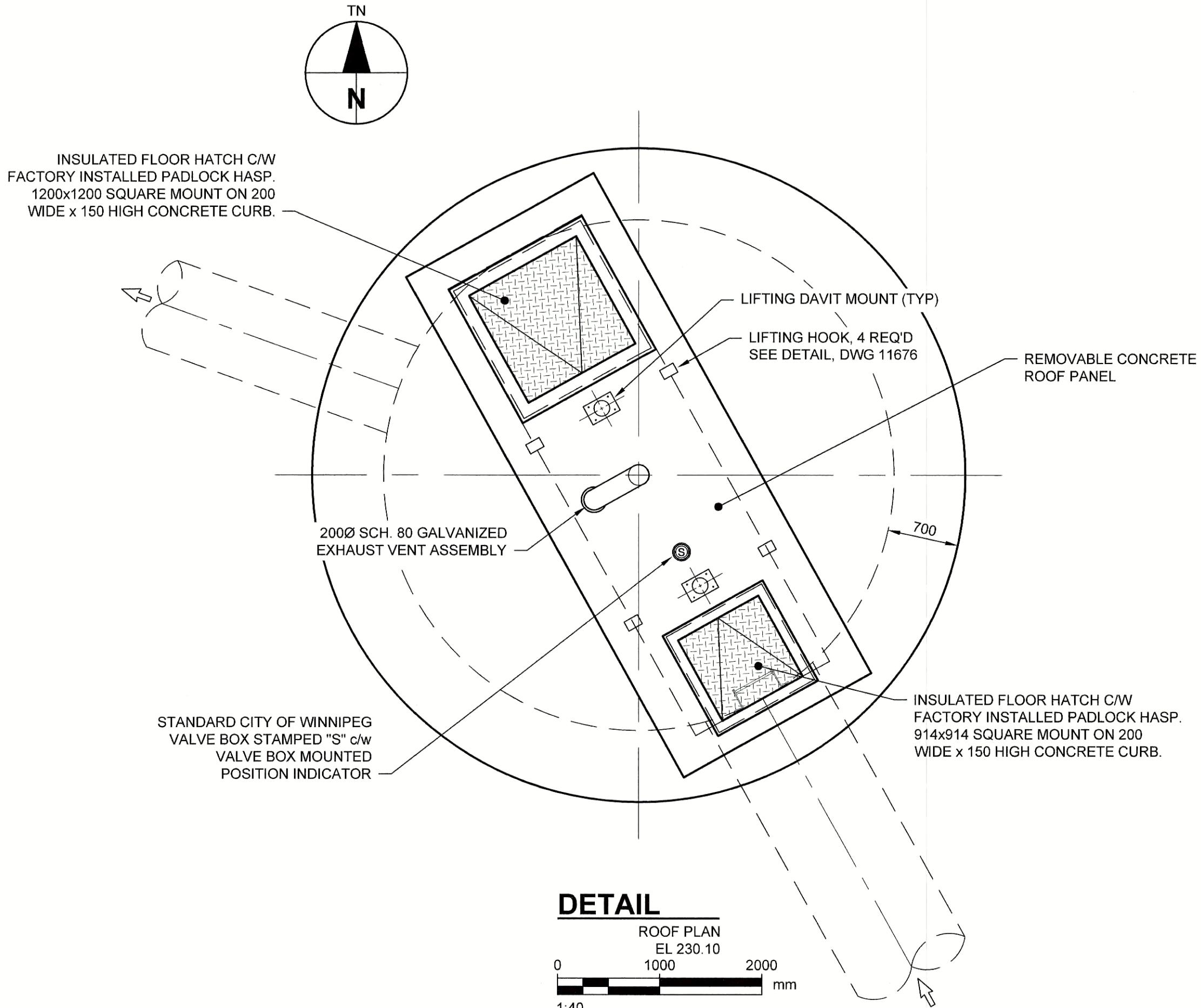


D SIZE 22" x 34" (559mm x 864mm)  
 PLOT: 4/24/2018 11:09:37 AM  
 AECOM FILE NAME: 60509089-SHT-30-0000-S-4003\_S-4004.dwg Saved By: coopekrl



**NOTES:**

- THE PERMANENT STRUCTURE (SIPHON CHAMBER) MAY BE CONSTRUCTED AS PART OF THE SHORING SYSTEM THROUGH THE USE OF SUNK CAISSONS. ANY PORTIONS OF THE SHORING SYSTEM THAT ARE TO BE UTILIZED AS THE PERMANENT STRUCTURE SHALL CONTAIN THE SPECIFIED MINIMUM REINFORCING STEEL AND UTILIZE WALL THICKNESS EQUAL TO OR GREATER THAN THOSE SPECIFIED.
- STRUCTURAL CONCRETE REINFORCING NOT SHOWN FOR CLARITY. REFER TO DWG 11676

**APECM**  
 Certificate of Authorization  
 AECOM Canada Ltd.  
 No. 4671 Date: Apr 12/18

**LOCATION APPROVED**  
 UNDERGROUND STRUCTURES

SUPR. U/G STRUCTURES COMMITTEE	DATE

**NOTE:**  
 LOCATION OF UNDERGROUND STRUCTURES AS SHOWN ARE BASED ON THE BEST INFORMATION AVAILABLE. BUT NO GUARANTEE IS GIVEN THAT ALL EXISTING UTILITIES ARE SHOWN OR THAT THE GIVEN LOCATIONS ARE EXACT. CONFIRMATION OF EXISTENCE AND EXACT LOCATION OF ALL SERVICES MUST BE OBTAINED FROM THE INDIVIDUAL UTILITIES BEFORE PROCEEDING WITH CONSTRUCTION.

NO.	ISSUED FOR CONSTRUCTION	18/04/24	KLC
	REVISIONS	YYMMDD	BY

DESIGNED BY	ADB	CHECKED BY	
DRAWN BY	ADUKLC	APPROVED BY	
HOR. SCALE	AS NOTED	RELEASED FOR CONSTRUCTION	
VERT. SCALE	AS NOTED	DATE	

**AECOM**

PROFESSIONAL'S SEAL

PROVINCE OF MANITOBA  
 A.B. BRAUN  
 Member  
 24453  
 12/24/18  
 PROFESSIONAL ENGINEER

CONSULTANT DRAWING NO.  
 60509089-SHT-30-0000-S-4003\_S-4004

**THE CITY OF WINNIPEG**  
 WATER AND WASTE DEPARTMENT

**NORTHEAST INTERCEPTOR SEWER RIVER CROSSING**

**SIPHON INLET CHAMBER**  
 PLANS, SECTIONS AND DETAILS

SHEET 10 OF 11  
 CITY DRAWING NUMBER  
**11675** REV 0

BID OPPORTUNITY NO. 1136-2017B

AECOM REVIEW DRFT CHK  
 AECOM FILE NAME: 60509089-SHT-30-0000-S-4003\_S-4004.dwg Saved By: coopekrl

**METRIC**  
 WHOLE NUMBERS INDICATE MILLIMETRES  
 DECIMALIZED NUMBERS INDICATE METRES