

24 GA., GALVALUME COATED, KYNAR 500 PAINTED, STEEL ROOFING PANELS. SEE COLOR MATRIX FOR AVAILABLE COLORS.

24'-3\"/>

28'-0\"/>



ROOFING TRIM IS 24 GA. KYNAR 500 COATED STEEL, COLOR MATCHED TO ROOF. EAVE CHANNEL TRIM IS REINFORCED WITH 18 GA. GALVANIZED INNER CHANNEL FOR ADDITIONAL EAVE SUPPORT.

NOTE: THIS IS A

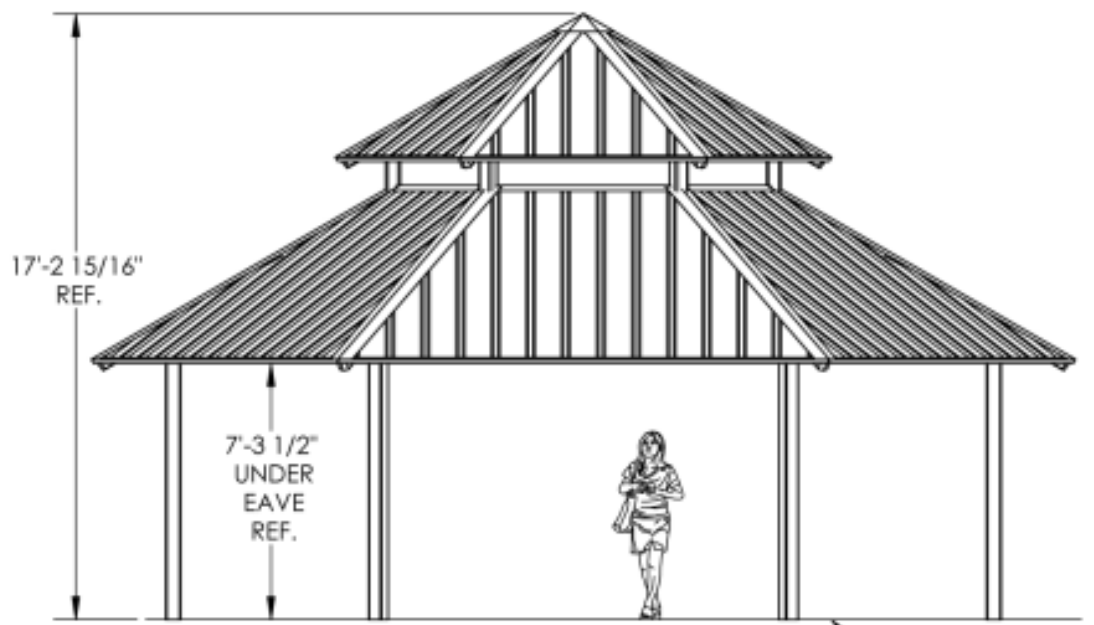
PLANNING LEVEL DRAWING.

THE STRUCTURE SHOWN IS SUBJECT TO ON-GOING DESIGN REVIEW AND UPDATE. EXPECT SOME CHANGES TO MATERIAL SIZES AND GENERAL DIMENSIONS. ONLY USE DRAWINGS PROVIDED WITH ENGINEERED STRUCTURES FOR CONSTRUCTION.

- SEE FINISHES / ROOFING PAGE FOR:
- FRAME FINISH OPTIONS
 - POWDER COAT AND ROOFING COLOR SELECTION
 - TONGUE & GROOVE, STRUCTURAL INSULATED PANEL AND METAL ROOF OPTIONS
 - OTHER ROOFING OPTIONS

- SEE ORNAMENTATION PAGE FOR:
- ORNAMENTATION PATTERNS
 - RAILING PATTERNS
 - COLUMN OPTIONS
 - CUPOLA OPTIONS

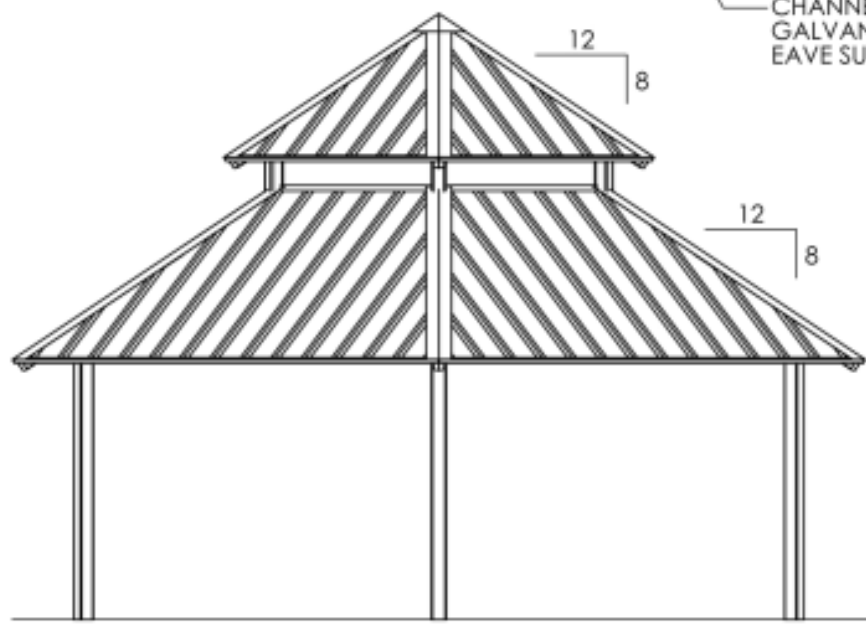
THIS BUILDING PROVIDES 509 SQ. FT. OF SHADE.



17'-2 15/16\"/>

7'-3 1/2\"/>

FINISH GRADE



SHELTER MODEL:		
OXFORD 28		
GXO2-28		
SCALE:	REV LEVEL:	DATE:
1:36	A	1/27/2011



Designs and calculations of Poligon buildings are protected under copyright laws and patents and may not be used in the construction or design of a building that is not supplied by Poligon.

by **PORTERCORP**
 PORTERCORP, 4240 N. 136th AVE. HOLLAND, MI 49424
www.poligon.com 800-354-7721

SHEET
ELEVATION VIEWS

Copyright laws protect the style and visual appearance of the structure while patents may protect other parts of the design.

PATENTED AND/OR PATENTS PENDING. COPYRIGHT 2007 PORTERCORP HOLLAND, MI 49424



THE CITY OF WINNIPEG
 Planning, Property and Development Dept.
 Planning and Land Use Division
 15-30 Fort Street, Winnipeg, MB, (R3C 4X5)

DESIGNED BY	CHECKED BY	APPROVED BY
DRAWN BY	RELEASED FOR CONSTRUCTION	
HORIZ. SCALE	VERT. SCALE	
DATE	DATE	
NTS	Apr/17	
MANAGER, PLANNING AND LAND USE DIVISION		DATE

DRAWING TITLE	SITE ADDRESS
KIRKBRIDGE PARK Picnic Shelter	119 KIRKBRIDGE DRIVE

CAD DRAWING NO.	DRAWING NO.
	K.5-R2