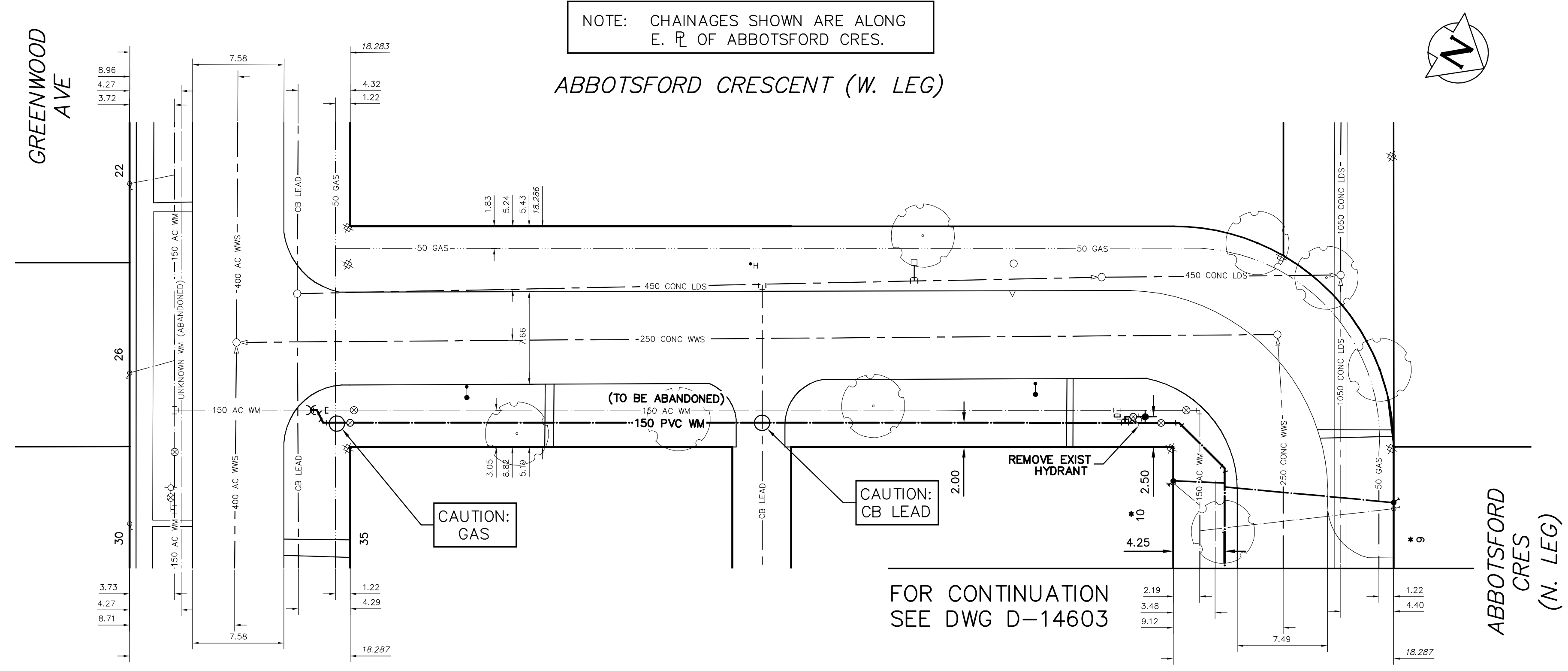


WATER SERVICE INFORMATION

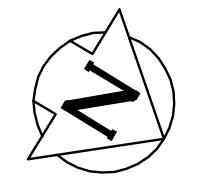
ADDRESS	SIZE (mm)	SIZE (mm)	SHORT & LONG MEASUREMENT	CORP. LOCATION	REMARKS
* 9 ABBOTSFORD CRES RESIDENTIAL	20	20	4.47 EWL HSE	1.8 E OF S/C	RENEW TO R W/20 CU DUE TO TREES
* 10 ABBOTSFORD CRES RESIDENTIAL	20	20	5.120 EEL ABBOTSFORD CRES (W.LEG)	1.8 E OF S/C	RENEW TO R W/20 CU DUE TO TREES
* 11 ABBOTSFORD CRES RESIDENTIAL	20	20	1.76 EWL HSE	2.9 E OF S/C	RECONNECT SERVICE
* 12 ABBOTSFORD CRES RESIDENTIAL	20	20	2.995 EEL ABBOTSFORD CRES (W.LEG)	2.9 E OF S/C	RECONNECT SERVICE
* 13 ABBOTSFORD CRES RESIDENTIAL	20	20	25.993 EEL ABBOTSFORD CRES (W.LEG)	0.6 W OF S/C	RECONNECT SERVICE
* 14 ABBOTSFORD CRES RESIDENTIAL	20	20	2.88 WEL HSE	0.6 W OF S/C	RECONNECT SERVICE
* 15 ABBOTSFORD CRES RESIDENTIAL	20	20	30.474 EEL ABBOTSFORD CRES (W.LEG)	0.6 W OF S/C	RECONNECT SERVICE
* 16 ABBOTSFORD CRES RESIDENTIAL	20	20	2.17 WEL HSE	0.6 W OF S/C	RECONNECT SERVICE
* 17 ABBOTSFORD CRES RESIDENTIAL	20	20	40.305 EEL ABBOTSFORD CRES (W.LEG)	0.6 W OF S/C	RECONNECT SERVICE
* 18 ABBOTSFORD CRES RESIDENTIAL	20	20	1.51 EWL HSE	0.6 W OF S/C	RECONNECT SERVICE
* 19 ABBOTSFORD CRES RESIDENTIAL	20	20	47.477 EEL ABBOTSFORD CRES (W.LEG)	0.6 W OF S/C	RECONNECT SERVICE
* 20 ABBOTSFORD CRES RESIDENTIAL	20	20	4.50 WEL HSE	0.6 W OF S/C	RECONNECT SERVICE
* 21 ABBOTSFORD CRES RESIDENTIAL	20	20	52.201 EEL ABBOTSFORD CRES (W.LEG)	0.6 W OF S/C	RECONNECT SERVICE
* 22 ABBOTSFORD CRES RESIDENTIAL	20	20	3.20 EWL HSE	0.6 W OF S/C	RECONNECT SERVICE
* 23 ABBOTSFORD CRES RESIDENTIAL	20	20	65.485 EEL ABBOTSFORD CRES (W.LEG)	0.6 W OF S/C	RECONNECT SERVICE
* 24 ABBOTSFORD CRES RESIDENTIAL	20	20	0.95 EWL HSE	0.6 W OF S/C	RECONNECT SERVICE
* 25 ABBOTSFORD CRES RESIDENTIAL	20	20	80.847 EEL ABBOTSFORD CRES (W.LEG)	0.6 W OF S/C	RECONNECT SERVICE
* 26 ABBOTSFORD CRES RESIDENTIAL	20	20	1.11 EWL HSE	0.6 W OF S/C	RECONNECT SERVICE
* 27 ABBOTSFORD CRES RESIDENTIAL	20	20	64.310 EEL ABBOTSFORD CRES (W.LEG)	0.6 W OF S/C	RECONNECT SERVICE
* 28 ABBOTSFORD CRES RESIDENTIAL	20	20	6.21 EWL HSE	0.6 W OF S/C	RECONNECT SERVICE
* 29 ABBOTSFORD CRES RESIDENTIAL	20	20	98.917 EEL ABBOTSFORD CRES (W.LEG)	0.6 W OF S/C	RECONNECT SERVICE
* 30 ABBOTSFORD CRES RESIDENTIAL	20	20	10.28 WEL HSE	0.6 W OF S/C	RECONNECT SERVICE
* 31 ABBOTSFORD CRES RESIDENTIAL	20	20	89.330 EEL ABBOTSFORD CRES (W.LEG)	0.6 W OF S/C	RECONNECT SERVICE
* 32 ABBOTSFORD CRES RESIDENTIAL	20	20	4.01 EWL HSE	0.6 W OF S/C	RECONNECT SERVICE
* 33 ABBOTSFORD CRES RESIDENTIAL	20	20	113.154 EEL ABBOTSFORD CRES (W.LEG)	0.6 W OF S/C	RECONNECT SERVICE
* 34 ABBOTSFORD CRES RESIDENTIAL	20	20	4.54 WEL HSE	0.6 W OF S/C	RECONNECT SERVICE
* 35 ABBOTSFORD CRES RESIDENTIAL	20	20	107.884 EEL ABBOTSFORD CRES (W.LEG)	0.6 W OF S/C	RECONNECT SERVICE
* 36 ABBOTSFORD CRES RESIDENTIAL	20	20	2.69 WEL HSE	0.6 W OF S/C	RECONNECT SERVICE
* 37 ABBOTSFORD CRES RESIDENTIAL	20	20	121.822 EEL ABBOTSFORD CRES (W.LEG)	0.6 W OF S/C	RECONNECT SERVICE
* 38 ABBOTSFORD CRES RESIDENTIAL	20	20	5.33 EWL HSE	0.6 W OF S/C	RECONNECT SERVICE
* 39 ABBOTSFORD CRES RESIDENTIAL	20	20	133.593 EEL ABBOTSFORD CRES (W.LEG)	0.6 W OF S/C	RECONNECT SERVICE
* 40 ABBOTSFORD CRES RESIDENTIAL	20	20	0.84 EWL HSE	0.6 W OF S/C	RECONNECT SERVICE
* 41 ABBOTSFORD CRES RESIDENTIAL	20	20	132.841 EEL ABBOTSFORD CRES (W.LEG)	0.6 W OF S/C	RECONNECT SERVICE
* 42 ABBOTSFORD CRES RESIDENTIAL	20	20	2.19 WEL HSE	0.6 W OF S/C	RECONNECT SERVICE
* 43 ABBOTSFORD CRES RESIDENTIAL	20	20	152.143 EEL ABBOTSFORD CRES (W.LEG)	0.6 W OF S/C	RECONNECT SERVICE
* 44 ABBOTSFORD CRES RESIDENTIAL	20	20	4.90 WEL HSE	0.6 W OF S/C	RECONNECT SERVICE
* 45 ABBOTSFORD CRES RESIDENTIAL	20	20	164.035 EEL ABBOTSFORD CRES (W.LEG)	0.6 W OF S/C	RECONNECT SERVICE
* 46 ABBOTSFORD CRES RESIDENTIAL	20	20	1.16 WEL HSE	0.6 W OF S/C	RECONNECT SERVICE
* 47 ABBOTSFORD CRES RESIDENTIAL	20	20	170.211 EEL ABBOTSFORD CRES (W.LEG)	0.6 W OF S/C	RECONNECT SERVICE
* 48 ABBOTSFORD CRES RESIDENTIAL	20	20	1.78 EWL HSE	0.6 W OF S/C	RECONNECT SERVICE
* 49 ABBOTSFORD CRES RESIDENTIAL	20	20	175.905 EEL ABBOTSFORD CRES (W.LEG)	0.6 W OF S/C	RECONNECT SERVICE
* 50 ABBOTSFORD CRES RESIDENTIAL	20	20	3.60 WEL HSE	0.6 W OF S/C	RECONNECT SERVICE
* 51 ABBOTSFORD CRES RESIDENTIAL	20	20	101.778 WWL IOWA ST	0.6 W OF S/C	RECONNECT SERVICE
* 52 ABBOTSFORD CRES RESIDENTIAL	20	20	0.18 WEL HSE	0.6 W OF S/C	RECONNECT SERVICE
* 53 ABBOTSFORD CRES RESIDENTIAL	20	20	83.862 WWL IOWA ST	3.0 W OF S/C	RECONNECT SERVICE
* 54 ABBOTSFORD CRES RESIDENTIAL	20	20	1.74 WEL HSE	0.6 W OF S/C	RECONNECT SERVICE
* 55 ABBOTSFORD CRES RESIDENTIAL	20	20	84.409 WWL IOWA ST	0.6 W OF S/C	RECONNECT SERVICE
* 56 ABBOTSFORD CRES RESIDENTIAL	20	20	2.41 WEL HSE	0.6 W OF S/C	RECONNECT SERVICE
* 57 ABBOTSFORD CRES RESIDENTIAL	20	20	76.694 WWL IOWA ST	0.6 W OF S/C	RECONNECT SERVICE
* 58 ABBOTSFORD CRES RESIDENTIAL	20	20	3.14 WEL HSE	0.6 W OF S/C	RECONNECT SERVICE
* 59 ABBOTSFORD CRES RESIDENTIAL	20	20	70.874 WWL IOWA ST	0.6 W OF S/C	RECONNECT SERVICE
* 60 ABBOTSFORD CRES RESIDENTIAL	20	20	2.59 WEL HSE	0.6 W OF S/C	RECONNECT SERVICE
* 61 ABBOTSFORD CRES RESIDENTIAL	20	20	56.446 WWL IOWA ST	3.1 OF S/C	RECONNECT SERVICE
* 62 ABBOTSFORD CRES RESIDENTIAL	20	20	1.27 WEL HSE	0.9 W OF S/C	RECONNECT SERVICE
* 63 ABBOTSFORD CRES RESIDENTIAL	20	20	53.504 WWL IOWA ST	0.9 W OF S/C	RECONNECT SERVICE
* 64 ABBOTSFORD CRES RESIDENTIAL	20	20	2.20 WEL HSE	1.2 W OF S/C	RECONNECT SERVICE
* 65 ABBOTSFORD CRES RESIDENTIAL	20	20	42.020 WWL IOWA ST	0.7 E OF S/C	RECONNECT SERVICE
* 66 ABBOTSFORD CRES RESIDENTIAL	20	20	2.08 EWL HSE	0.7 E OF S/C	RECONNECT SERVICE
* 67 ABBOTSFORD CRES RESIDENTIAL	20	20	46.855 WWL IOWA ST	0.6 E OF S/C	RECONNECT SERVICE
* 68 ABBOTSFORD CRES RESIDENTIAL	20	20	2.30 EWL HSE	0.6 E OF S/C	RECONNECT SERVICE
* 69 ABBOTSFORD CRES RESIDENTIAL	20	20	29.984 WWL IOWA ST	0.6 E OF S/C	RECONNECT SERVICE
* 70 ABBOTSFORD CRES RESIDENTIAL	20	20	2.47 WEL HSE	0.6 W OF S/C	RECONNECT SERVICE
* 71 ABBOTSFORD CRES RESIDENTIAL	20	20	23.913 WWL IOWA ST	3.0 W OF S/C	RECONNECT SERVICE
* 72 ABBOTSFORD CRES RESIDENTIAL	20	20	4.32 EWL HSE	3.0 W OF S/C	RECONNECT SERVICE
* 73 ABBOTSFORD CRES RESIDENTIAL	20	20	11.170 WWL IOWA ST	1.2 W OF S/C	RECONNECT SERVICE
* 74 ABBOTSFORD CRES RESIDENTIAL	20	20	5.300 WWL IOWA ST	1.2 W OF S/C	RECONNECT SERVICE
* 75 ABBOTSFORD CRES RESIDENTIAL	20	20	5.81 EWL HSE	0.6 W OF S/C	RECONNECT SERVICE
* 76 ABBOTSFORD CRES RESIDENTIAL	20	20	12.487 EWL IOWA ST	1.4 W OF S/C	OUTSIDE SET LIMITS
* 77 ABBOTSFORD CRES RESIDENTIAL	20	20	1.41 WEL HSE	1.4 W OF S/C	OUTSIDE SET LIMITS
* 78 ABBOTSFORD CRES RESIDENTIAL	20	20	14.699 EEL IOWA ST	2.2 W OF S/C	OUTSIDE SET LIMITS
* 79 ABBOTSFORD CRES RESIDENTIAL	20	20	0.18 WEL HSE	2.2 W OF S/C	OUTSIDE SET LIMITS
* 80 ABBOTSFORD CRES RESIDENTIAL	20	20	19.054 EEL IOWA ST	1.0 W OF S/C	OUTSIDE SET LIMITS
* 81 ABBOTSFORD CRES RESIDENTIAL	20	20	2.31 WEL HSE	1.0 W OF S/C	OUTSIDE SET LIMITS
* 82 ABBOTSFORD CRES RESIDENTIAL	20	20	3.529 WWL ABBOTSFORD CRES	1.0 W OF S/C	OUTSIDE SET LIMITS
* 83 ABBOTSFORD CRES RESIDENTIAL	20	20	4.29 WEL HSE	0.6 W OF S/C	OUTSIDE SET LIMITS
* 84 ABBOTSFORD CRES RESIDENTIAL	20	20	12.150 EWL ABBOTSFORD CRES	0.6 W OF S/C	OUTSIDE SET LIMITS
* 85 ABBOTSFORD CRES RESIDENTIAL	20	20	4.72 EWL HSE	0.6 W OF S/C	OUTSIDE SET LIMITS
* 86 ABBOTSFORD CRES RESIDENTIAL	20	20	24.652 EWL ABBOTSFORD CRES	0.6 W OF S/C	OUTSIDE SET LIMITS
* 87 ABBOTSFORD CRES RESIDENTIAL	20	20	0.65 WEL HSE	0.6 W OF S/C	OUTSIDE SET LIMITS
* 88 ABBOTSFORD CRES RESIDENTIAL	20	20	12.948 EEL ABBOTSFORD CRES	0.6 W OF S/C	OUTSIDE SET LIMITS

* SERVICES TO BE RENEWED TO R. ALL OTHERS TO BE RECONNECTED



NOTE: CHAINAGES SHOWN ARE ALONG E. L. OF ABBOTSFORD CRES.

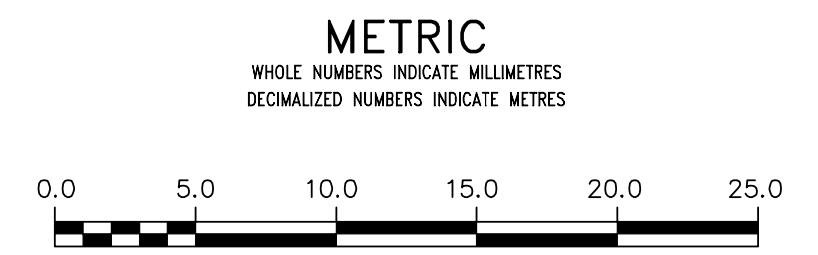
ABBOTSFORD CRESCENT (W. LEG)



ABBOTSFORD CRES (N. LEG)

NOTE: ALL VALVES TO BE INSTALLED CLOCKWISE TO CLOSE

FOR INDEX SEE D-14601



<p>WARNING</p> <p>IF POWER EQUIPMENT OR EXPLOSIVES ARE TO BE USED FOR EXCAVATION ON THIS PROJECT THE CONTRACTOR MUST:</p> <p>1) NOTIFY THE GAS COMPANY OF THE PROPOSED LOCATION OF EXCAVATION.</p> <p>2) TAKE PRECAUTION TO AVOID DAMAGE TO GAS COMPANY INSTALLATIONS.</p> <p>SEE PROVINCIAL REGULATION 210/72 FOR DETAILS</p>	<p>LOCATION APPROVED UNDERGROUND STRUCTURES</p> <p>SUPV. U/G STRUCTURES COMMITTEE DATE</p> <p>NOTE: LOCATION OF UNDERGROUND STRUCTURES AS SHOWN ARE BASED ON THE BEST INFORMATION AVAILABLE BUT NO GUARANTEE IS GIVEN THAT ALL EXISTING UTILITIES ARE SHOWN OR THAT THE GIVEN LOCATIONS ARE EXACT. CONFIRMATION OF EXISTENCE AND EXACT LOCATION OF ALL SERVICES MUST BE OBTAINED FROM THE INDIVIDUAL UTILITIES BEFORE PROCEEDING WITH CONSTRUCTION.</p>	<p>B.M. ELEV.</p> <table border="1"> <tr><td> </td><td> </td><td> </td></tr> <tr><td> </td><td> </td><td> </td></tr> <tr><td> </td><td> </td><td> </td></tr> </table>										<p>DESIGNED BY: MJK</p> <p>CHECKED BY: SC</p> <p>DRAWN BY: RJ</p> <p>APPROVED BY: KZ</p> <p>SCALE: HORIZONTAL 1:250, VERTICAL 1:50</p> <p>RELEASED FOR CONSTRUCTION: KAS ZUREK</p> <p>DATE: 2017 05 10</p> <p>DATE: 2017 05 09</p>	<p>ENGINEER'S SEAL</p> <p>ORIGINAL SIGNED BY S.J.R. COURNOYER 17/05/09</p> <p>CONSULTANT DRAWING NUMBER: -</p>	<p>THE CITY OF WINNIPEG</p> <p>WATER AND WASTE DEPARTMENT ENGINEERING DIVISION</p> <p>2017 WATER MAIN RENEWALS CONTRACT 2</p> <p>ABBOTSFORD CRESCENT</p> <p>GREENWOOD AVENUE TO ABBOTSFORD CRESCENT (N. LEG)</p>	<p>SHEET 3 OF 18</p> <p>CITY DRAWING NUMBER: D-14602</p>
<p>PLOT DATE: 2017 05 10</p>		<p>FILE PATH: R:\DRAWINGS\WATER\RENEWAL\2017 RENEWALS\CONTRACT 2\Construction\ABBOTSFORD.dwg</p>													