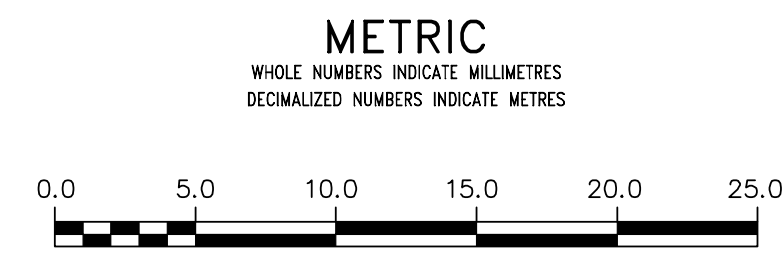
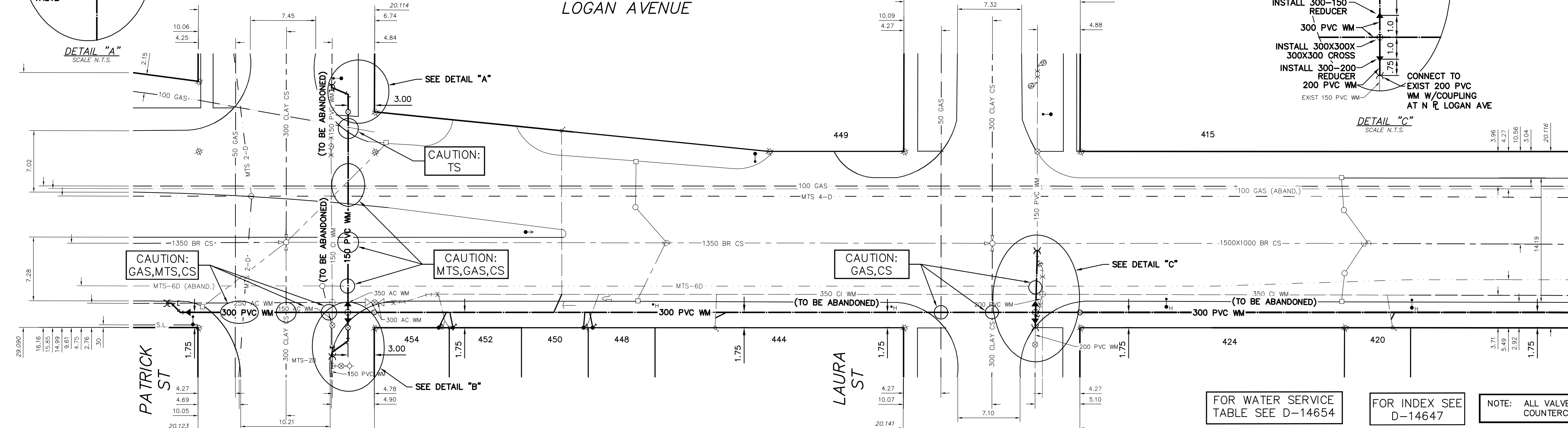


NOTE: CHAINAGES SHOWN ARE ALONG S. R. OF LOGAN AVE.

LOGAN AVENUE



WARNING
 IF POWER EQUIPMENT OR EXPLOSIVES ARE TO BE USED FOR EXCAVATION ON THIS PROJECT THE CONTRACTOR MUST:
 1) NOTIFY THE GAS COMPANY OF THE PROPOSED LOCATION OF EXCAVATION.
 2) TAKE PRECAUTION TO AVOID DAMAGE TO GAS COMPANY INSTALLATIONS.
 SEE PROVINCIAL REGULATION 210/72 FOR DETAILS

LOCATION APPROVED
 UNDERGROUND STRUCTURES
 SUPV. U/G STRUCTURES COMMITTEE DATE
 NOTE:
 LOCATION OF UNDERGROUND STRUCTURES AS SHOWN ARE BASED ON THE BEST INFORMATION AVAILABLE BUT NO GUARANTEE IS GIVEN THAT ALL EXISTING UTILITIES ARE SHOWN OR THAT THE GIVEN LOCATIONS ARE EXACT. CONFIRMATION OF EXISTENCE AND EXACT LOCATION OF ALL SERVICES MUST BE OBTAINED FROM THE INDIVIDUAL UTILITIES BEFORE PROCEEDING WITH CONSTRUCTION.

NO.	REVISIONS	DATE	BY

DESIGNED BY	MJK	CHECKED BY	SC
DRAWN BY	RJ	APPROVED BY	KZ
SCALE:	HORIZONTAL 1:250 VERTICAL 1:50		
DATE	2017 04 26	RELEASED FOR CONSTRUCTION	KAS ZUREK
PLOT DATE:	2017 04 26	DATE	2017 04 26

ENGINEER'S SEAL
 ORIGINAL SIGNED BY S.J.R. COURNOYER 17/04/26
 CONSULTANT DRAWING NUMBER

THE CITY OF WINNIPEG
 WATER AND WASTE DEPARTMENT
 ENGINEERING DIVISION
 2017 WATER MAIN RENEWALS
 CONTRACT 5
 LOGAN AVENUE
 PATRICK STREET TO
 138 E OF PATRICK STREET

SHEET 8 OF 10
 CITY DRAWING NUMBER
 D-14653

FOR WATER SERVICE TABLE SEE D-14654
 FOR INDEX SEE D-14647
 NOTE: ALL VALVES TO BE INSTALLED COUNTERCLOCKWISE TO CLOSE

MATCHLINE 2+37.500
 SEE DWG D-14654

