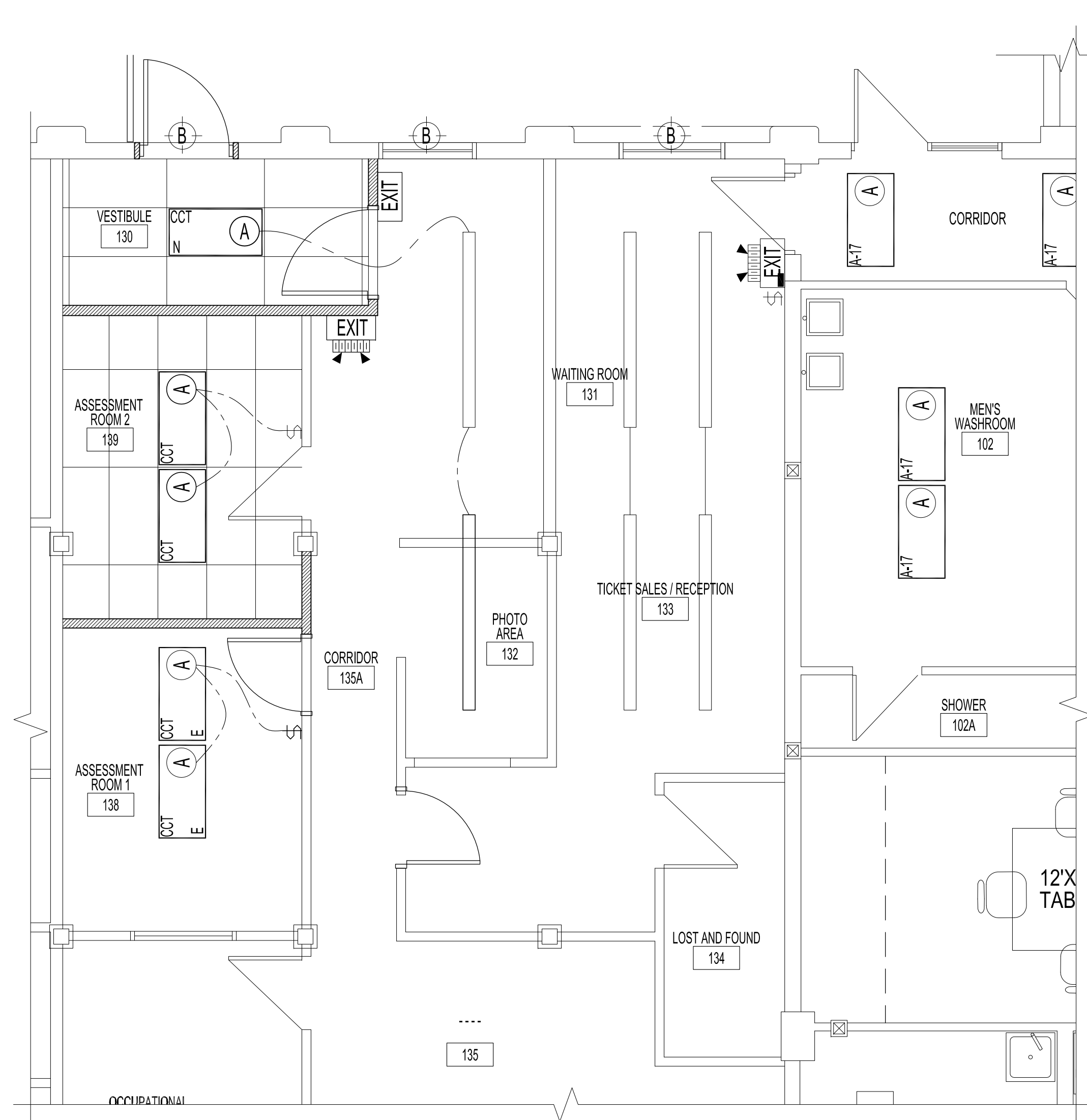


**PARTIAL MAIN FLOOR REFLECTED CEILING PLAN - DEMOLITION & RENOVATION**  
SCALE: 1/4"=1'-0"

**ELECTRICAL RENOVATION NOTES:** "X" "

ALSO SEE ELECTRICAL SPECIFICATIONS.  
REFER TO ARCHITECTURAL DRAWING FOR LAYOUT.  
NOTE: EXISTING ELECTRICAL PANEL IS NOT LABELLED OR HAS PANEL LIST, THEREFORE, IS ASSIGNED AS PANEL "D".

1. PROVIDE LUMINAIRE TYPE "A" FOR VESTIBULE. WIRE TO EXISTING CIRCUIT SHOWN.
2. RELOCATE LUMINAIRE & CIRCUIT.
3. RELOCATE LUMINAIRES & WIRE TO ASSESSMENT ROOM 2, 139, EXISTING WALL SWITCH LOCATION WITH NEW LIGHT SWITCH.
4. RELOCATE LIGHT SWITCH CIRCUIT AS SHOWN & REWIRE WITH NEW LIGHT SWITCH.
5. PROVIDE NEW EXIT SIGN - CENTERED ABOVE NEW DOOR & 108" AFF. WIRE TO NEW COMBO BATTERY UNIT.
6. PROVIDE COMBO BATTERY UNIT 108" AFF. WIRE TO EXISTING EMERGENCY LIGHTING CIRCUIT.
7. FUNCTION OF EXISTING EXTERIOR SOFFIT POT LIGHT TO REMAIN. RELAMP & REPAIR IF REQUIRE. IF NEW DOOR LOCATION AFFECTS FUNCTION OF POT LIGHT, REWORK.



**PARTIAL MAIN FLOOR REFLECTED CEILING PLAN - RENOVATION**  
SCALE: 1/4"=1'-0"

**NOTES:**  
THESE DRAWINGS SHALL NOT BE SCALED.  
REFER TO DRAWING E1 & E3.

ELECTRICAL LEGEND AND SCHEDULE				
TYPE	MANUFACTURER	CATALOGUE No.	LAMP	DESCRIPTION
(A)	LITHONIA	2GT8 4 32 A12 MVOLT GEB 10IS	(4) T8 (32W) 4100K, CR85	RECESSED COMMERCIAL 2'x4' FLUORESCENT, ACRYLIC PRISMATIC DIFFUSER, ELECTRONIC BALLAST INSTANT START, PROVIDE NEW FOR DAMAGED OR NEW LUMINAIRE.
(P)	EXISTING			POT LIGHT, RELAMP
S	EXISTING			LIGHT SWITCH, SINGLE
EXIT	TO MATCH EXISTING			EMERGENCY LIGHTING/EXIT SIGN
EXIT	TO MATCH EXISTING			EMERGENCY EXIT SIGN
DO-1	EXISTING			POWER DOOR OPERATOR
DO-2				LOW ENERGY POWER DOOR OPERATOR, PUSH-N-GO, ON/OFF/HOLD OPEN SWITCH. SEE DRAWING A1 FOR SPECIFICATION.
DO-3				LOW ENERGY POWER DOOR OPERATOR, PUSH-N-GO, ON/OFF/HOLD OPEN SWITCH SEE DRAWING A1 FOR SPECIFICATION.
DA				36" TALL FULL HEIGHT DOOR ACTUATOR WITH "PUSH TO OPEN" & WHEELCHAIR MARKINGS. SEE DRAWING A1 FOR SPECIFICATION.
DA				JAMB STYLE PUSH PLATE FITTED TO ALUMINUM GUIDE RAIL. TO CONFORM TO MANITOBA BUILDING CODE. SEE DRAWING A1 FOR SPECIFICATION.
LM				LATCH MONITOR. SEE DRAWING A1 FOR SPECIFICATION.
DC	GE	1076CW		DOOR CONTACT TO CONFIRM AUTO DOOR POSITION.
HIRE				COMMERCIAL WALL-MOUNTED WHITE ELECTRIC HEATER, REZNOR EHC SIZE 5 (4.8kW) WITH FACTORY OPTIONS AK6E (240V/ 3PH), BUILT-IN THERMOSTAT, CONTROL VOLTAGE, BF 2 3 (UNIT MOUNTED FAN SWITCH, HY6 (SURFACE MOUNTING BOX).

RELAMP ALL LUMINAIRES WITHIN AREA OF WORK WITH 4100K LAMP COLOUR.

No.	REVISION/DESCRIPTION	BY	DATE
SEAL			

DRAWN	DATE	CHECKED	DESIGNED	APPROVED
	2016.02.19	USER		

THE CITY OF WINNIPEG  
PLANNING, PROPERTY AND  
DEVELOPMENT DEPARTMENT  
MUNICIPAL ACCOMMODATIONS DIVISION  
3-65 GARRY STREET, R3C 4K4

PROJECT  
HANDI TRANSIT OFFICE  
ENTRANCE MODIFICATIONS TO ACCOM. IMPROVED ACCESS  
CONSTRUCTION OF ENTRANCE MODIFICATIONS  
414 OSBORNE STREET

SHEET TITLE  
PARTIAL MAIN FLOOR REFLECTED CEILING PLAN  
ELECTRICAL  
DEMOLITION AND RENOVATION

SCALE	PROJECT No:	SHEET No:
AS SHOWN	2015-036	E2