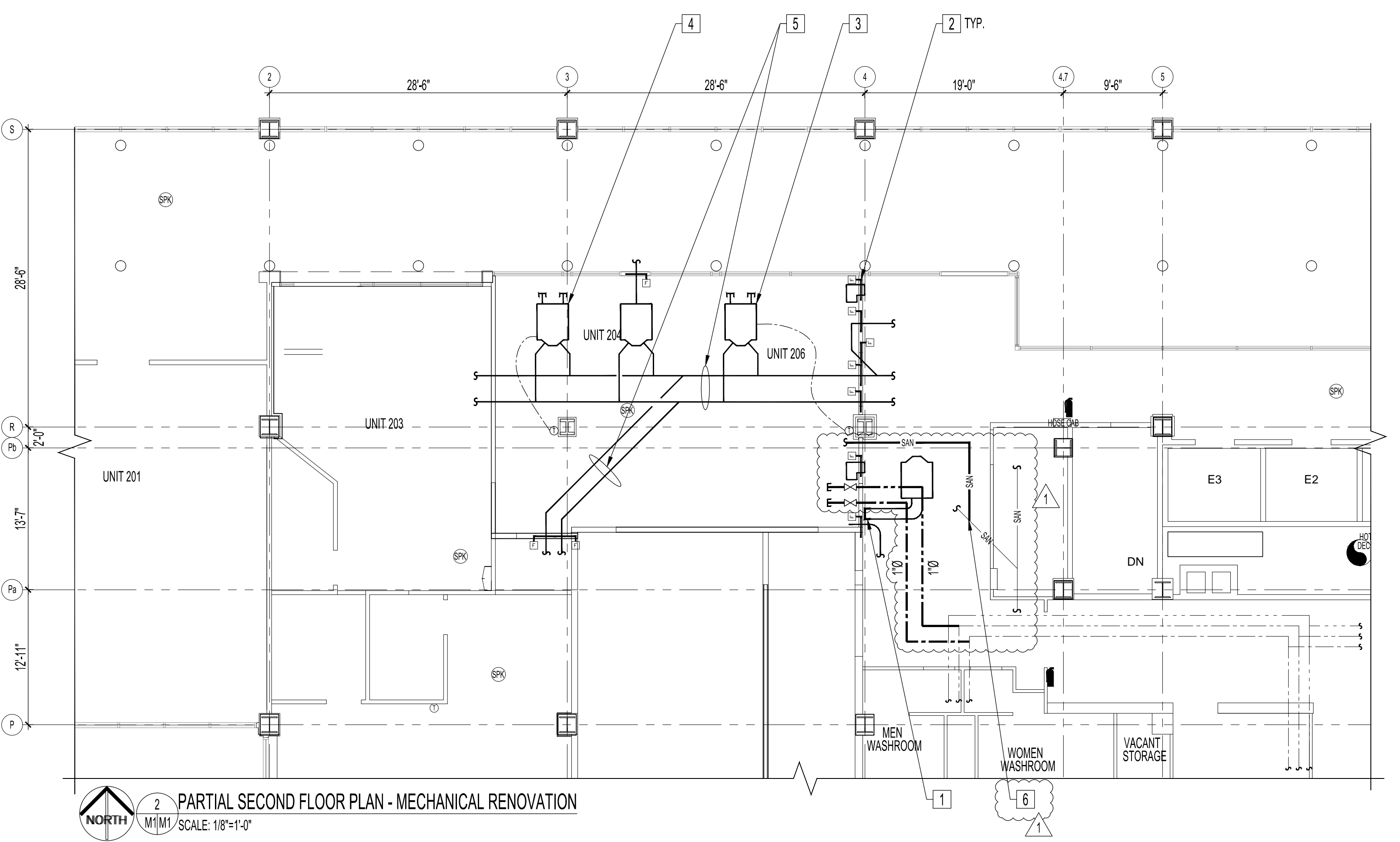
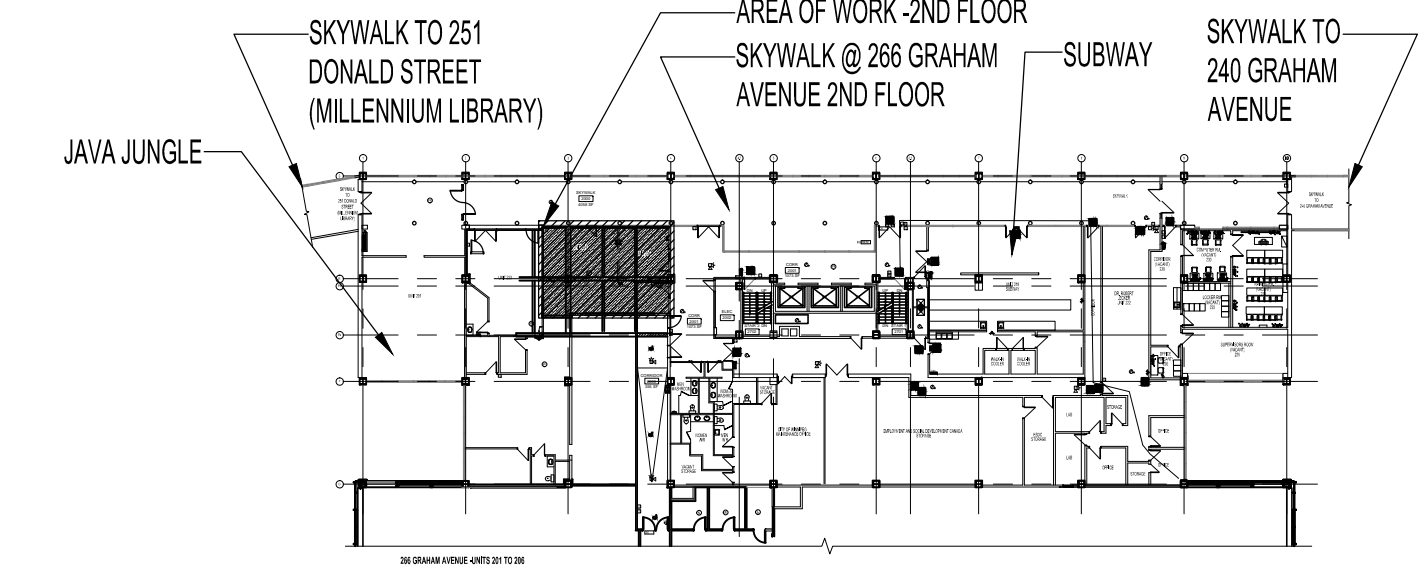


1 PARTIAL SECOND FLOOR PLAN - MECHANICAL DEMOLITION
 NORTH M1/M1 SCALE: 1/8"=1'-0"



2 PARTIAL SECOND FLOOR PLAN - MECHANICAL RENOVATION
 NORTH M1/M1 SCALE: 1/8"=1'-0"



KEY PLAN
 NORTH SCALE: N.T.S.

PARTIAL SECOND FLOOR MECHANICAL DEMOLITION NOTES:

- 1 EXISTING DUCTWORK TO BE DEMOLISHED
- 2 EXISTING DUAL DUCT TERMINAL UNIT TO STAY
- 3 EXISTING AIR TRANSFER ELBOW TO REMAIN
- 4 EXISTING DUCTWORK TO REMAIN
- 5 EXISTING VAV BOX TO BE REMOVED

MECHANICAL SYMBOLS

- EXISTING
- TO BE DEMOLISHED/RELOCATED
- E EXISTING RETURN GRILLE TO REMAIN
- R RELOCATED RETURN AIR GRILLE
- N NEW RETURN AIR GRILLE (SEE NEW GRILLE SCHEDULE)
- E EXISTING SUPPLY GRILLE TO REMAIN
- R RELOCATED SUPPLY AIR GRILLE
- N NEW SUPPLY AIR GRILLE (SEE NEW GRILLE SCHEDULE) TO BE CONNECTED VIA NEW 8"Ø GALV. DUCT WITH NEW BALANCING DAMPER FROM MAIN SUPPLY DUCT.
- FLEX DUCT (SUPPLY & INSTALL)
- GRILLE TYPE (SEE GRILLE SCHEDULE)
- SIZE
- CFM
- T EXISTING THERMOSTAT TO BE REMOVED AND RELOCATED
- R EXISTING RELOCATED THERMOSTAT
- R EXISTING AIR TRANSFER ELBOW TO BE REMOVED AND RELOCATED
- EXISTING RELOCATED AIR TRANSFER ELBOW
- E EXISTING FLUSH MOUNTED CHROME PENDENT SPRINKLER HEAD
- R RELOCATED FLUSH MOUNTED CHROME PENDENT SPRINKLER HEAD
- N NEW FLUSH MOUNTED CHROME PENDENT SPRINKLER HEAD
- EXISTING DUAL DUCT TERMINAL UNIT TO REMAIN
- F NEW FIRE DAMPER
- DOMESTIC COLD WATER PIPING
- DOMESTIC HOT WATER PIPING
- DOMESTIC HOT WATER RECIRCULATION LINE PIPING
- VENT PIPING
- SAN SANITARY DRAIN PIPING ABOVE SLAB
- SAN SANITARY DRAIN PIPING BELOW SLAB
- FLOOR DRAIN
- SHUT OFF VALVE

PARTIAL SECOND FLOOR MECHANICAL RENOVATION NOTES:

- 1 CAP OFF EXISTING DUCTWORK AT APPROXIMATE LOCATION AS SHOWN
- 2 NEW FIRE DAMPER THROUGH FIRE RATED WALL - CONTRACTOR TO CONFIRM EXACT QUANTITY ON SITE
- 3 VAV-1: NEW EH PRICE VAV BOX MODEL #DH613 C/W PNEUMATIC THERMOSTAT. 480 CFM
- 4 VAV-3: NEW EH PRICE VAV BOX MODEL #DH613 C/W PNEUMATIC THERMOSTAT. 240 CFM
- 5 INSULATE EXISTING/NEW DUCTWORK IN TENANT SPACE
- 6 TENANT SPACE SANITARY PUMP OUT LINE CONNECTED TO EXISTING SANITARY LINE AT APPROXIMATELY THIS LOCATION

NOTES:
 THESE DRAWINGS SHALL NOT BE SCALED.
 THE CONTRACTOR SHALL VISIT THE SITE AND SATISFY ONESELF ALL DIMENSIONS, DATUM, AND DETAILED INFORMATION SHOWN ARE CORRECT.
 THE CONTRACTOR IS TO REVIEW AND COORDINATE ALL ARCHITECTURAL, MECHANICAL, ELECTRICAL AND STRUCTURAL DRAWINGS FOR ADDITIONAL OPENINGS THROUGH FLOORS, WALLS, AND CEILINGS FOR DUCT, PIPE & ELECTRICAL RISERS AND ALL OPENINGS NOT SHOWN ON DRAWINGS.
 ALL OPENINGS THROUGH FIRE ASSEMBLIES ARE TO BE FIRE STOPPED AND SEALED WITH U.L.C. APPROVED FIRE STOPPING TO MAINTAIN THE INTEGRITY OF THE FIRE SEPARATION, AND PROVIDE A SMOKE-TIGHT BARRIER.
 ALL PRODUCTS AND MATERIALS TO BE USED AND INSTALLED SHALL CONFORM WITH MANUFACTURER'S SPECIFICATIONS & APPLICABLE CODES.
 THE CONTRACTOR SHALL BE RESPONSIBLE TO PATCH AND MAKE GOOD ALL EXISTING CONSTRUCTION AFFECTED BY THE REMOVAL OF ALL ITEMS FORMING THE PART OF THE RENOVATION WORK.
 THE CONTRACTOR IS RESPONSIBLE FOR INSTALLING RISERS, SWING JOINTS AND DEEP CUP ESCUTCHEONS AS REQUIRED.
 COMPLETE ALL WORK IN CONFORMANCE WITH THE REQUIREMENTS OF NFPA 13-2013 "STANDARD FOR THE INSTALLATION OF SPRINKLER SYSTEMS".
 ELECTRICAL WIRING SHALL BE PERFORMED BY A QUALIFIED ELECTRICAL SUBTRADE.
 NEW DUCT SHALL BE CONSTRUCTED AS RECOMMENDED BY ASHRAE.
 FIRE DAMPERS SHALL BE INSTALLED ON ALL DUCTWORK PENETRATING FIRE RATED WALL ASSEMBLIES, WHETHER FIRE DAMPERS ARE SHOWN ON THE DRAWINGS OR NOT. CONTRACTOR TO VERIFY ON SITE.
 INSULATE CONDITIONED AIR DUCTWORK IN THE RENOVATION AREA WITH 1" FIBERGLASS RFFR/FLEXIBLE OR RIGID DUCT INSULATION INSTALLED IN ACCORDANCE WITH MANUFACTURER'S RECOMMENDATIONS.
 ALL VENT PIPING TO BE INSTALLED IN ACCORDANCE WITH NATIONAL PLUMBING CODE AND MANITOBA PLUMBING CODE REQUIREMENTS.
 SUPPLY AND INSTALL THE FOLLOWING PUMPS IN LIEU OF PROVIDING PROPER SANITARY DRAIN LINES FROM BELOW (PHO SPACE):
 • MYERS M4SP-12S PUMP FOR KITCHEN AND HAND SINK
 • LIBERTY LQJ-20S CONDENSATE PUMP TO SERVER DRAIN FROM SB EQUIPMENT AT BAR LOCATION
 • LIBERTY 404 SERIES PUMP AND FIT FOR BACK BAR DRAIN LOCATIONS
 • LIBERTY 405 SERIES PUMP AND FIT SERVING THE 3 COMPARTMENT SINK, RAISED MOP SINK, DISHWASHER, DRAIN FOR REVERSE OSMOSIS AND SOFTENER
 SUPPLY AND INSTALL THE FOLLOWING PIT FOR ALL THE ABOVE PUMPS TO PUMP DRAIN TO:
 • PRO 370 PIT AND 285-2 LIBERTY PUMP OUT SYSTEM
 PUMP AND PIPING INSTALLATION IN THE TENANT SPACE SHALL BE COORDINATED WITH TENANT SPACE PLANS.

No.	REVISION/DESCRIPTION	BY	DATE
1	ISSUED FOR ADDENDUM #1	JAW	MAR 13 2017
0	ISSUED FOR CONSTRUCTION	JAW	FEB 17 2017



DRAWN	CHECKED	DESIGNED	APPROVED
JAW			
DATE	USER	APPROVAL	
2015.12.21			

THE CITY OF WINNIPEG
 PLANNING, PROPERTY AND DEVELOPMENT DEPARTMENT
 MUNICIPAL ACCOMMODATIONS DIVISION
 3-65 GARRY STREET, R3C 4K4

PROJECT
 FORMER POST OFFICE TOWER
 BUILDING CODES UPGRADES

266 GRAHAM AVENUE
 SHEET TITLE
 PARTIAL SECOND FLOOR PLAN - SKYWALK
 UNITS 204 & 206 - DEMOLITION, RENOVATION
 & FIRE CODE UPGRADES

SCALE	PROJECT No:	SHEET No:
AS SHOWN	2014-146-02	M1-R1