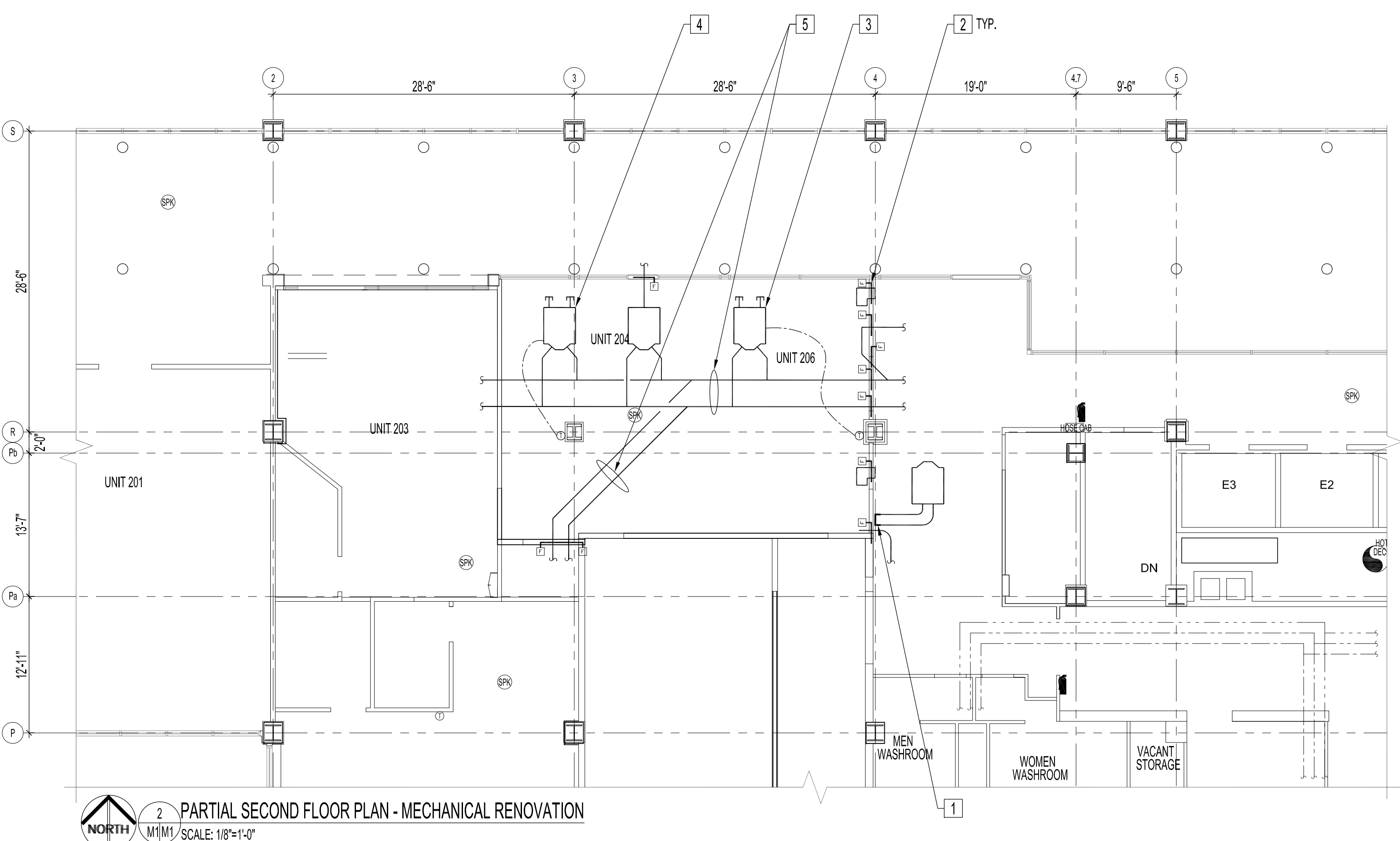
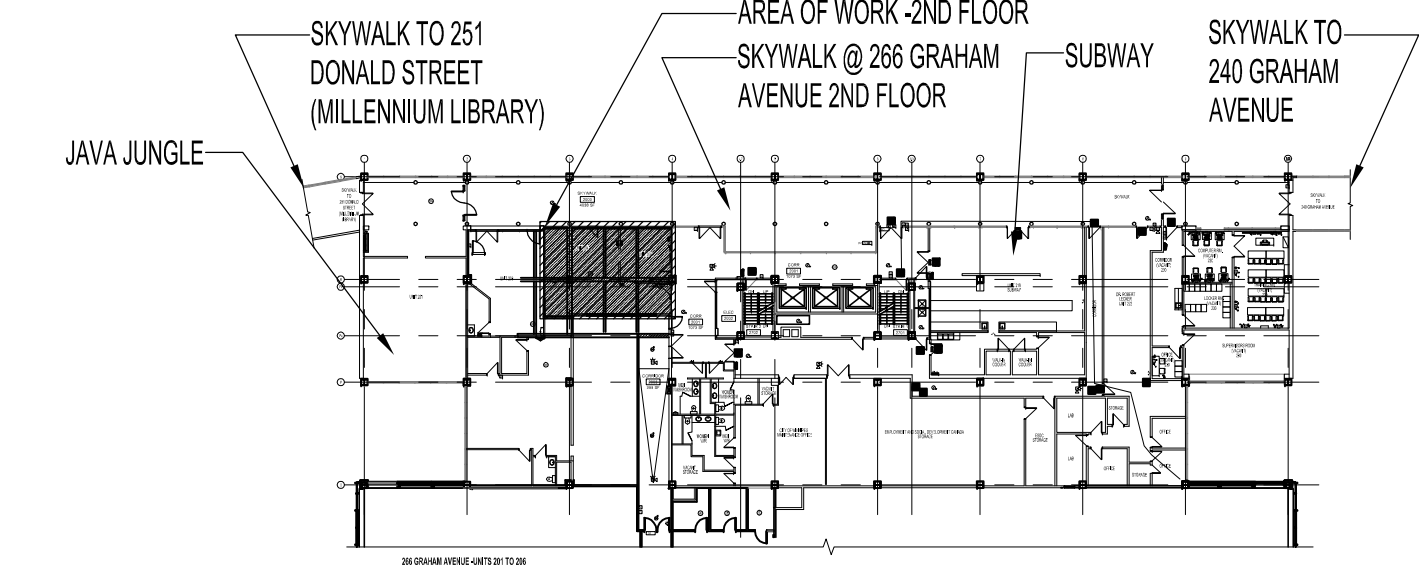


1 PARTIAL SECOND FLOOR PLAN - MECHANICAL DEMOLITION  
SCALE: 1/8"=1'-0"



2 PARTIAL SECOND FLOOR PLAN - MECHANICAL RENOVATION  
SCALE: 1/8"=1'-0"



KEY PLAN  
SCALE: N.T.S.

**PARTIAL SECOND FLOOR MECHANICAL DEMOLITION NOTES:**

- 1 EXISTING DUCTWORK TO BE DEMOLISHED
- 2 EXISTING DUAL DUCT TERMINAL UNIT TO STAY
- 3 EXISTING AIR TRANSFER ELBOW TO REMAIN
- 4 EXISTING DUCTWORK TO REMAIN
- 5 EXISTING VAV BOX TO BE REMOVED

**MECHANICAL SYMBOLS**

- EXISTING
- TO BE DEMOLISHED/RELOCATED
- E EXISTING RETURN GRILLE TO REMAIN
- R RELOCATED RETURN AIR GRILLE
- N NEW RETURN AIR GRILLE (SEE NEW GRILLE SCHEDULE)
- E EXISTING SUPPLY GRILLE TO REMAIN
- R RELOCATED SUPPLY AIR GRILLE
- N NEW SUPPLY AIR GRILLE (SEE NEW GRILLE SCHEDULE) TO BE CONNECTED VIA NEW 8"Ø GALV. DUCT WITH NEW BALANCING DAMPER FROM MAIN SUPPLY DUCT.
- FLEX DUCT (SUPPLY & INSTALL)
- GRILLE TYPE (SEE GRILLE SCHEDULE)
- SIZE
- CFM
- T EXISTING THERMOSTAT TO BE REMOVED AND RELOCATED
- R EXISTING RELOCATED THERMOSTAT
- R EXISTING AIR TRANSFER ELBOW TO BE REMOVED AND RELOCATED
- EXISTING RELOCATED AIR TRANSFER ELBOW
- E EXISTING FLUSH MOUNTED CHROME PENDENT SPRINKLER HEAD
- R RELOCATED FLUSH MOUNTED CHROME PENDENT SPRINKLER HEAD
- N NEW FLUSH MOUNTED CHROME PENDENT SPRINKLER HEAD
- EXISTING DUAL DUCT TERMINAL UNIT TO REMAIN
- F NEW FIRE DAMPER
- DOMESTIC COLD WATER PIPING
- DOMESTIC HOT WATER PIPING
- DOMESTIC HOT WATER RECIRCULATION LINE PIPING
- VENT PIPING
- SNW SANITARY DRAIN PIPING ABOVE SLAB
- SNW SANITARY DRAIN PIPING BELOW SLAB
- FLOOR DRAIN
- SHUT OFF VALVE

**PARTIAL SECOND FLOOR MECHANICAL RENOVATION NOTES:**

- 1 CAP OFF EXISTING DUCTWORK AT APPROXIMATE LOCATION AS SHOWN
- 2 NEW FIRE DAMPER THROUGH FIRE RATED WALL - CONTRACTOR TO CONFIRM EXACT QUANTITY ON SITE
- 3 VAV-1: NEW EH PRICE VAV BOX MODEL #DH613 C/W PNEUMATIC THERMOSTAT. 480 CFM
- 4 VAV-3: NEW EH PRICE VAV BOX MODEL #DH613 C/W PNEUMATIC THERMOSTAT. 240 CFM
- 5 INSULATE EXISTING/NEW DUCTWORK IN TENANT SPACE

**NOTES:**  
 THESE DRAWINGS SHALL NOT BE SCALED.  
 THE CONTRACTOR SHALL VISIT THE SITE AND SATISFY ONESELF ALL DIMENSIONS, DATUM, AND DETAILED INFORMATION SHOWN ARE CORRECT.  
 THE CONTRACTOR IS TO REVIEW AND COORDINATE ALL ARCHITECTURAL, MECHANICAL, ELECTRICAL AND STRUCTURAL DRAWINGS FOR ADDITIONAL OPENINGS THROUGH FLOORS, WALLS, AND CEILINGS FOR DUCT, PIPE & ELECTRICAL RISERS AND ALL OPENINGS NOT SHOWN ON DRAWINGS.  
 ALL OPENINGS THROUGH FIRE ASSEMBLIES ARE TO BE FIRE STOPPED AND SEALED WITH ULC APPROVED FIRE STOPPING TO MAINTAIN THE INTEGRITY OF THE FIRE SEPARATION, AND PROVIDE A SMOKE-TIGHT BARRIER.  
 ALL PRODUCTS AND MATERIALS TO BE USED AND INSTALLED SHALL CONFORM WITH MANUFACTURER'S SPECIFICATIONS & APPLICABLE CODES.  
 THE CONTRACTOR SHALL BE RESPONSIBLE TO PATCH AND MAKE GOOD ALL EXISTING CONSTRUCTION AFFECTED BY THE REMOVAL OF ALL ITEMS FORMING THE PART OF THE RENOVATION WORK.  
 THE CONTRACTOR IS RESPONSIBLE FOR INSTALLING RISERS, SVING JOINTS AND DEEP CUP ESCUTCHEONS AS REQUIRED.  
 COMPLETE ALL WORK IN CONFORMANCE WITH THE REQUIREMENTS OF NFPA 13-2013 'STANDARD FOR THE INSTALLATION OF SPRINKLER SYSTEMS'.  
 ELECTRICAL WIRING SHALL BE PERFORMED BY A QUALIFIED ELECTRICAL SUBTRADE.  
 NEW DUCT SHALL BE CONSTRUCTED AS RECOMMENDED BY ASHRAE.  
 FIRE DAMPERS SHALL BE INSTALLED ON ALL DUCTWORK PENETRATING FIRE RATED WALL ASSEMBLIES. WHETHER FIRE DAMPERS ARE SHOWN ON THE DRAWINGS OR NOT, CONTRACTOR TO VERIFY ON SITE.  
 INSULATE CONDITIONED AIR DUCTWORK IN THE RENOVATION AREA WITH 1" FIBERGLASS RFFRKF FLEXIBLE OR RIGID DUCT INSULATION INSTALLED IN ACCORDANCE WITH MANUFACTURERS RECOMMENDATIONS.  
 ALL VENT PIPING TO BE INSTALLED IN ACCORDANCE WITH NATIONAL PLUMBING CODE AND MANITOBA PLUMBING CODE REQUIREMENTS.  
 SUPPLY AND INSTALL THE FOLLOWING PUMPS IN LIEU OF PROVIDING PROPER SANITARY/DRAIN LINES FROM BELOW (PHO SPACE):  
 • MYERS MUSP-125 PUMP FOR KITCHEN AND HAND SINK  
 • LIBERTY LDU-20S CONDENSATE PUMP TO SERVER DRAIN FROM SB EQUIPMENT AT BAR LOCATION  
 • LIBERTY 404 SERIES PUMP AND PIT FOR BACK BAR DRAIN LOCATIONS  
 • LIBERTY 405 SERIES PUMP AND PIT SERVING THE 3 COMPARTMENT SINK, RAISED MOP SINK, DISHWASHER, DRAIN FOR REVERSE OSMOSIS AND SOFTENER  
 SUPPLY AND INSTALL THE FOLLOWING PIT FOR ALL THE ABOVE PUMPS TO PUMP/DRAIN TO:  
 • PRO 370 PIT AND 280-2 LIBERTY PUMP OUT SYSTEM  
 PUMP AND PIPING INSTALLATION IN THE TENANT SPACE SHALL BE COORDINATED WITH TENANT SPACE PLANS.

No.	REVISION/DESCRIPTION	BY	DATE
0	ISSUED FOR CONSTRUCTION	JAW	FEB 17 2017



DRAWN	CHECKED	DESIGNED	APPROVED
JAW			
DATE: 2015.12.21	USER APPROVAL		

THE CITY OF WINNIPEG  
 PLANNING, PROPERTY AND DEVELOPMENT DEPARTMENT  
 MUNICIPAL ACCOMMODATIONS DIVISION  
 3-65 GARRY STREET, R3C 4K4

PROJECT  
 FORMER POST OFFICE TOWER  
 BUILDING CODES UPGRADES

266 GRAHAM AVENUE

SHEET TITLE  
 PARTIAL SECOND FLOOR PLAN - SKYWALK  
 UNITS 204 & 206 - DEMOLITION, RENOVATION  
 & FIRE CODE UPGRADES

SCALE	PROJECT No:	SHEET No:
AS SHOWN	2014-146-02	M1