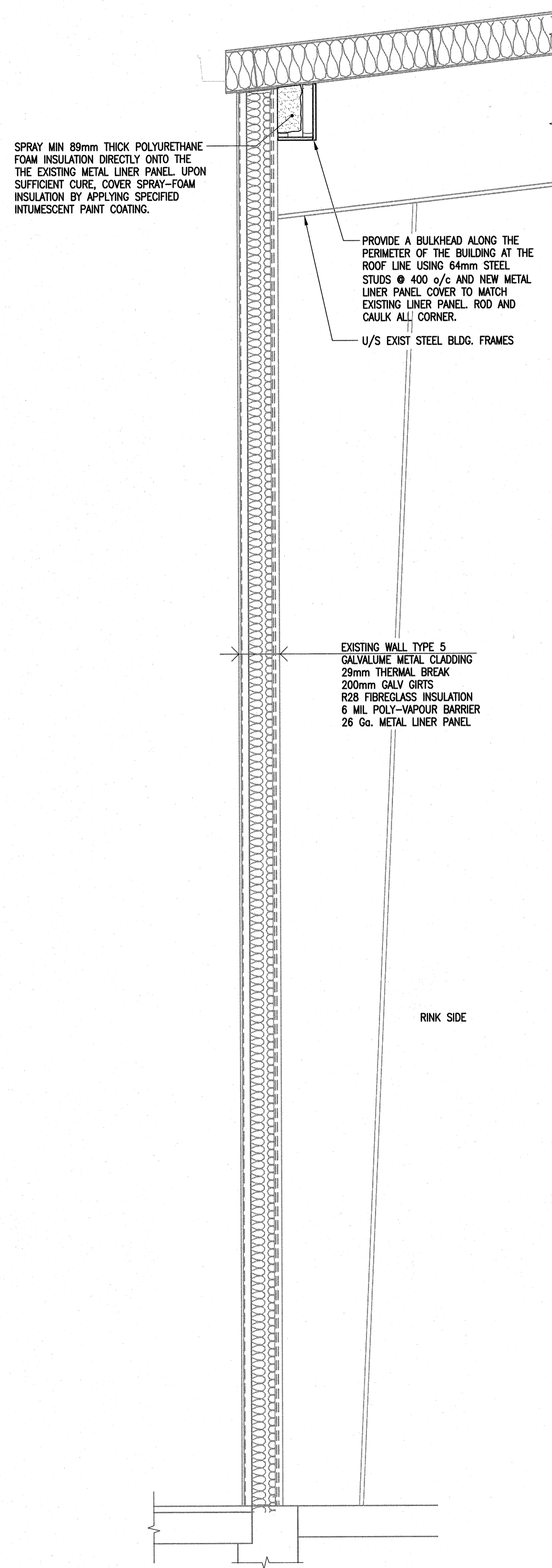
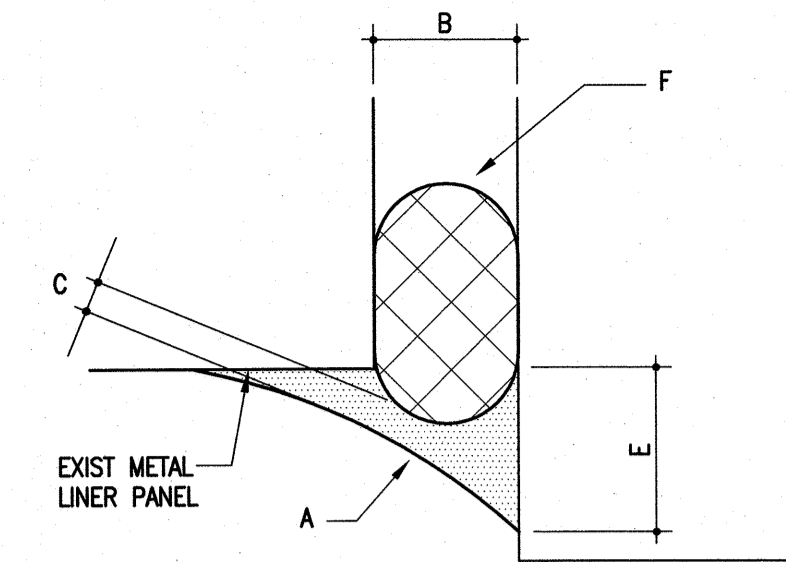


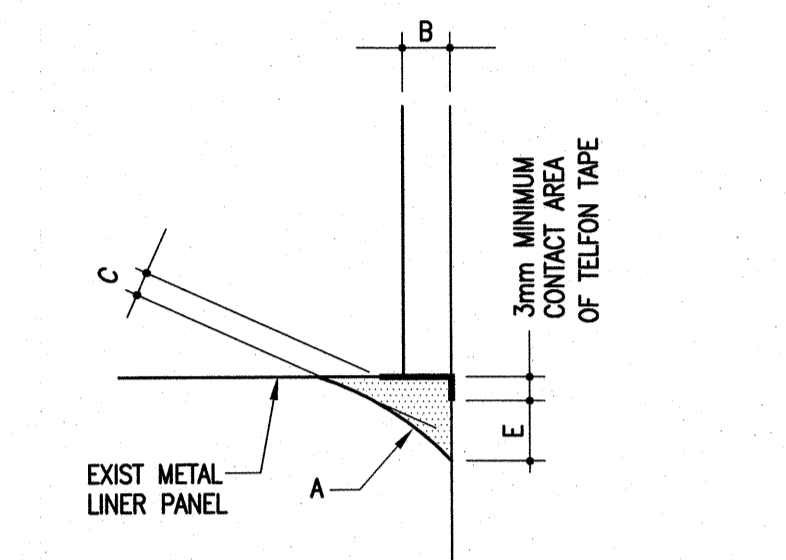
**1** SECTION AT EAST RINK WALL  
S4.3 1 : 20



**2** SECTION AT NORTH RINK WALL  
S4.3 1 : 20



\* FOR JOINT MORE THAN 3mm



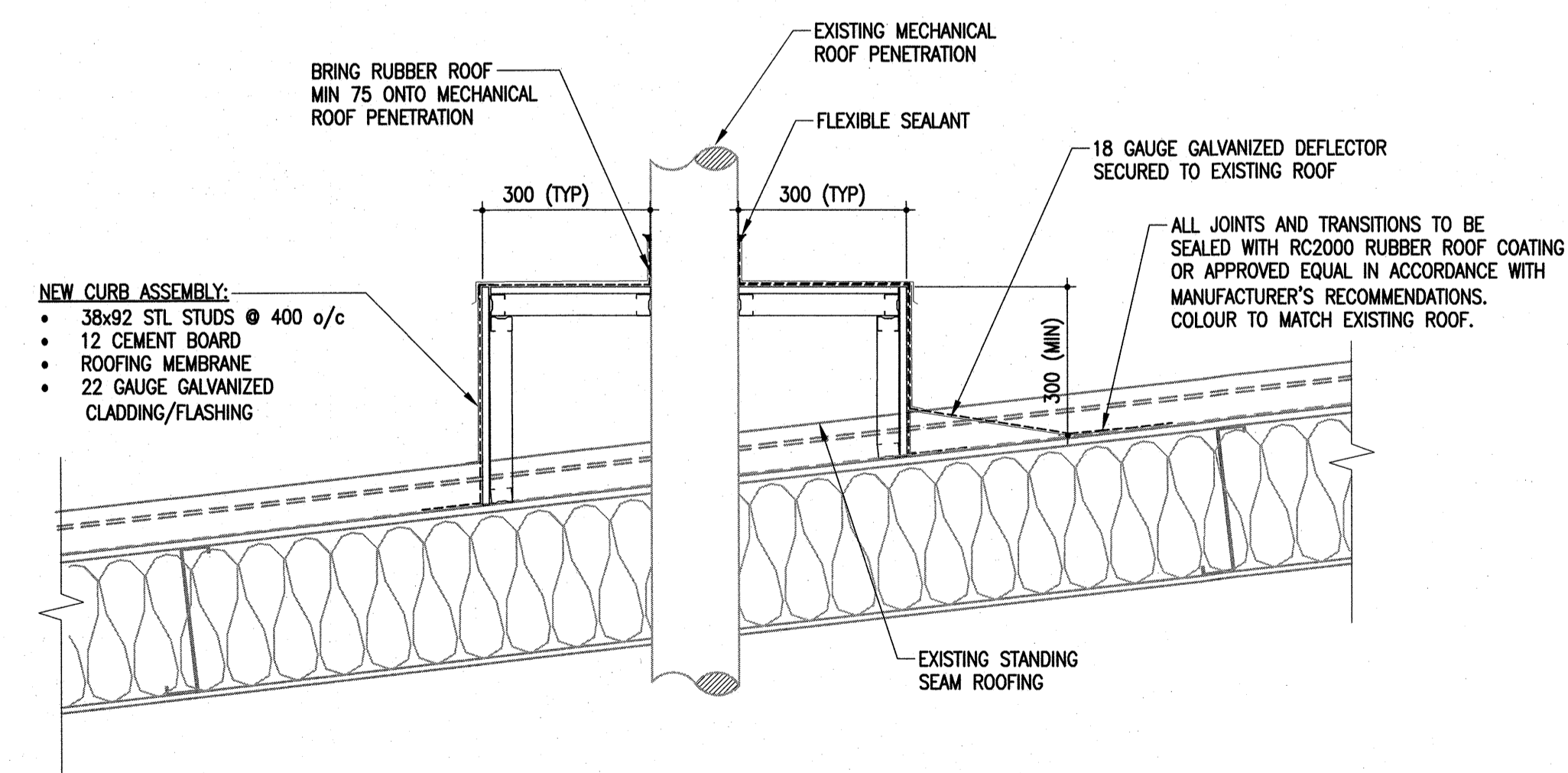
\* FOR JOINT LESS THAN 3mm

**A** TYPICAL JOINT DETAILS  
- S4.3 SCALE: NTS

- A - SEALANT (COLOUR CHOSEN BY CITY OF WINNIPEG)
- B - JOINT WIDTH (16mm ± 3mm)
- C - SEALANT DEPTH (3mm MINIMUM, 10mm MAXIMUM)
- D/E - SEALANT CONTACT DEPTH (MINIMUM 6mm)
- F - BACKER ROD OR BOND BREAKER TAPE

**NOTES:**

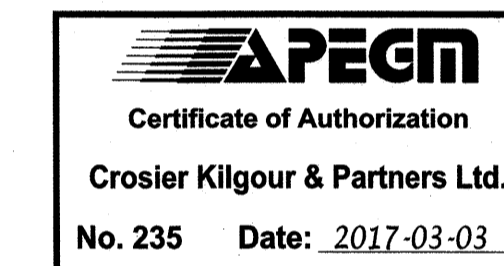
1. COMPLETELY REMOVE ALL EXISTING SEALANT FROM PRECAST PANELS AND METAL FRAMES.
2. CLEAN JOINT SURFACES IN ACCORDANCE WITH SPECIFICATIONS.
3. INSTALL MANUFACTURER APPROVED PRIMER.
4. INSTALL NEW CLOSED CELL BACKER ROD OR BOND BREAKER TAPE AS JOINT WIDTH PERMITS.
5. INSTALL CONTINUOUS BEAD OF SEALANT IN ACCORDANCE WITH DRAWINGS AND SPECIFICATIONS.
6. REFER ALSO TO SPECIFICATION FOR A COMPLETE LIST OF METHODS AND MATERIALS.



**B** NEW CURB AT TYPICAL ROOF PENETRATION  
- S4.3 SCALE: NTS

The General Contractor shall check & verify all dimensions and report any errors or omissions to the designers.

0	2017-03-03	ISSUED FOR CONSTRUCTION	CMR
No.	Date	Issue/Revision	By



Consultant

300-275 Carlton Street  
Winnipeg, Manitoba R3C 5R6  
T 204. 943. 7501  
F 204. 943. 7507

**Crosier Kilgour & Partners Ltd.**  
CONSULTING STRUCTURAL ENGINEERS

Project  
**DAKOTA COMMUNITY CENTRE**  
BUILDING ENVELOPE UPGRADES  
1188 DAKOTA STREET  
WINNIPEG, MB

Sheet Title  
SECTIONS AND DETAILS

File	2016-0794	Date	2017-03-03
Design	CMR	Drawn	RBC/RJM

Revision	Sheet No.
0	S4.3