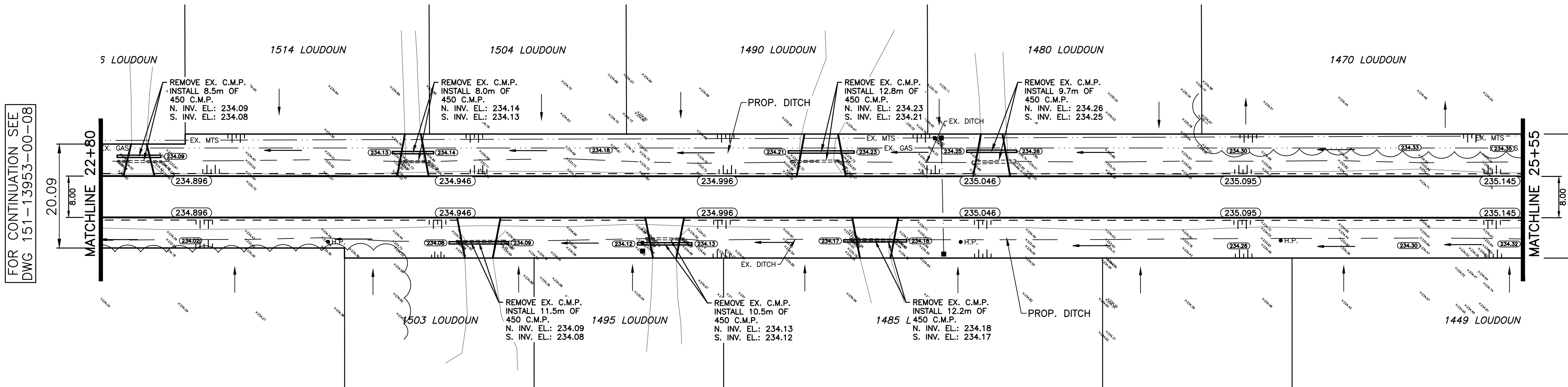
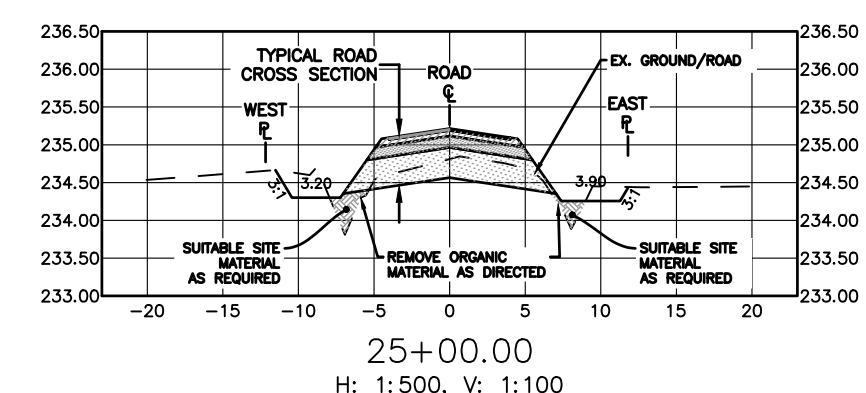
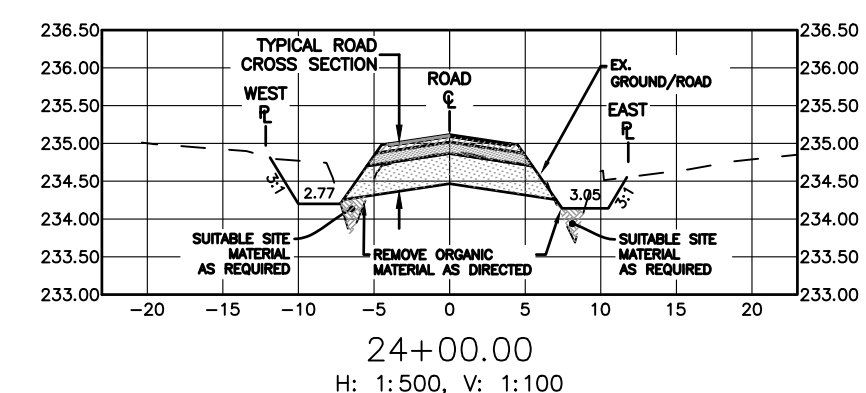
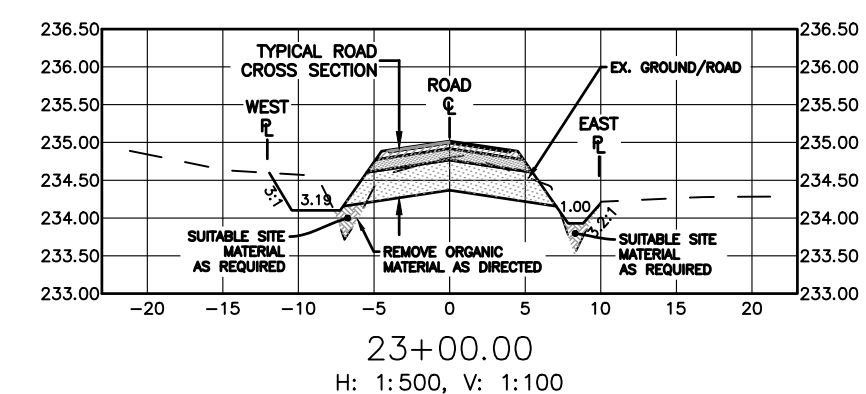
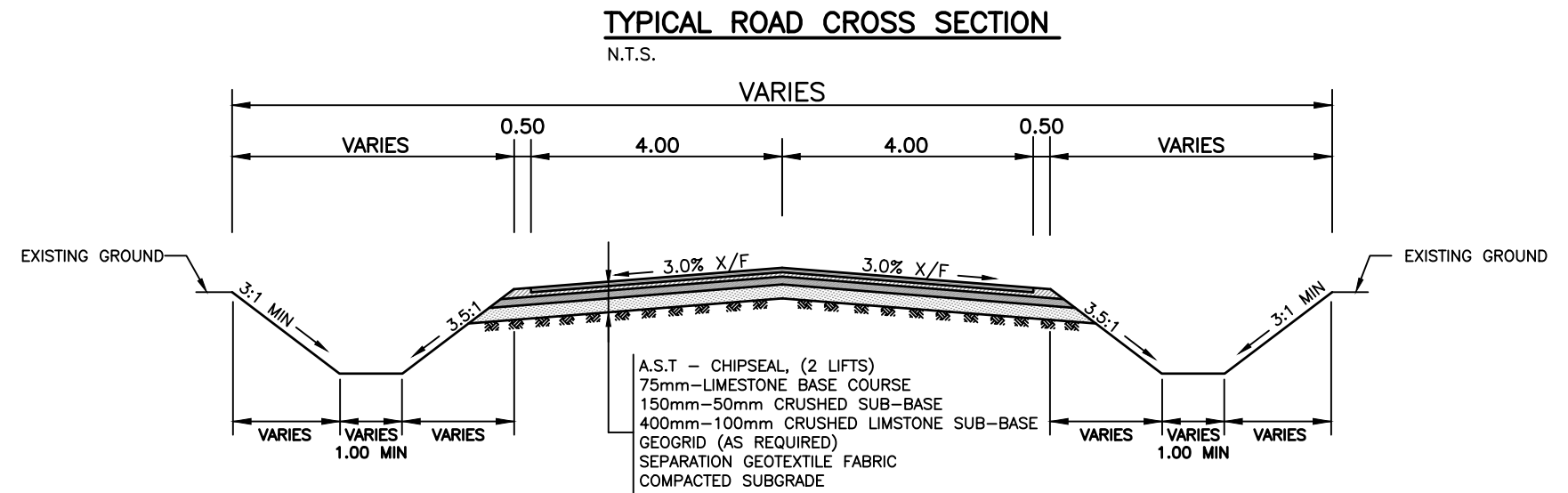


- GENERAL NOTES**
1. ALL WORK TO CONFORM TO THE LATEST CITY OF WINNIPEG CONSTRUCTION SPECIFICATIONS
 2. CLEARING AND GRUBBING LIMITS AS DIRECTED BY CONTRACT ADMINISTRATOR
 3. ALL MANHOLES, VALVES AND OTHER APPURTENANCES TO BE ADJUSTED AS DIRECTED BY CONTRACT ADMINISTRATOR
 4. ALL DITCHES TO BE REGRADED AS DIRECTED BY CONTRACT ADMINISTRATOR
 5. REMOVAL OF ORGANIC MATERIAL AS DIRECTED BY CONTRACT ADMINISTRATOR
 6. ALL PRIVATE APPROACHES TO BE REGRADED AND RESTORED AS DIRECTED BY CONTRACT ADMINISTRATOR
 7. PREVENT DAMAGE TO EXIST TREES OUTSIDE OF WORK LIMITS
 8. LANDSCAPING LIMITS AS DIRECTED BY CONTRACT ADMINISTRATOR

CHAINAGE ALONG CENTERLINE OF LOUDOUN ROAD R.O.W.

LOUDOUN ROAD



FOR CONTINUATION SEE DWG 151-13953-00-08

FOR CONTINUATION SEE DWG 151-13953-00-010

"Description of property limits, and existing and/or proposed features relative to these limits as shown on this drawing do not represent a Legal Survey. WSP makes no representation or guarantee that the property limit information is accurate. WSP accepts no responsibility for damages, if any, suffered by any third party as a result of decisions made or actions based on this drawing."

---○---	WATERMAIN	---	M.T.S.	---	WATERMAIN	---	WATERMAIN	---	WATERMAIN
---○---	HYDRANT	---	TRAFFIC SIGNAL	---	VALVE	---	VALVE	---	VALVE
---○---	VALVE	---	CONCRETE/ASPHALT	---	LAND DRAINAGE SEWER	---	LAND DRAINAGE SEWER	---	LAND DRAINAGE SEWER
---	CURB STOP	---	SIDEWALK	---	WASTE WATER SEWER	---	WASTE WATER SEWER	---	WASTE WATER SEWER
---	WASTE WATER SEWER	---	CURB RAMP	---	CENTERLINE	---	CENTERLINE	---	CENTERLINE
---	LAND DRAINAGE SEWER	---	PROPERTY LINE	---	SOUTH & EAST GUTTER	---	SOUTH & EAST GUTTER	---	SOUTH & EAST GUTTER
---	C.B. LEAD	---	ELEVATIONS	---	NORTH & WEST GUTTER	---	NORTH & WEST GUTTER	---	NORTH & WEST GUTTER
---	MANHOLE	---	TEST HOLE LOCATION	---	S. & E. PAD/GARG.	---	S. & E. PAD/GARG.	---	S. & E. PAD/GARG.
---	CATCH BASIN	---	CULVERT	---	N. & W. PAD/GARG.	---	N. & W. PAD/GARG.	---	N. & W. PAD/GARG.
---	GAS	---	TREES	---		---		---	
---	HYDRO	---		---		---		---	
---	EXISTING	---	LEGEND - PLAN	---	EXISTING	---	LEGEND - PROFILE	---	EXISTING
---	LEGEND - PLAN	---	PROPOSED	---	PROPOSED	---	PROPOSED	---	PROPOSED

LOCATION APPROVED UNDERGROUND STRUCTURES

SUPV.	U/G STRUCTURES	DATE			
COMMITTEE					
NOTE:	LOCATION OF UNDERGROUND STRUCTURES AS SHOWN ARE BASED ON THE BEST INFORMATION AVAILABLE BUT NO GUARANTEE IS GIVEN THAT ALL EXISTING UTILITIES ARE SHOWN OR THAT THE GIVEN LOCATIONS ARE EXACT. CONFIRMATION OF EXISTENCE AND EXACT LOCATION OF ALL SERVICES MUST BE OBTAINED FROM THE INDIVIDUAL UTILITIES BEFORE PROCEEDING WITH CONSTRUCTION.				
B.M. ELEV.					
NO.	REVISIONS	DATE	BY		
01	ISSUED FOR TENDER	17/09/04	R.H.		
02	COW REVIEW SUBMISSION	17/02/05	R.H.		

WSP 1600 BUFFALO PLACE WINNIPEG, MB, R3T 6B8 PHONE: 204-477-6650 FAX: 204-474-2864 WWW.WSPGROUP.COM

DESIGNED BY: R.H. CHECKED BY: S.M.
 DRAWN BY: R.H. APPROVED BY: I.McK.
 HOR. SCALE: 1:500
 VERT. SCALE: 1:25
 DATE: FEBRUARY 2016

ENGINEERS SEAL

CONSULTANT DRAWING NO.	151-13953-00-09
------------------------	-----------------

THE CITY OF WINNIPEG PUBLIC WORKS DEPARTMENT

2016 GRANULAR RENEWALS
 LOUDOUN ROAD

FROM MATCHLINE AT STA. 22+80 TO MATCHLINE AT STA. 25+55
 CHIPSEAL PAVEMENT

CITY DRAWING NO. SHEET 09 OF 13
 221-2017

