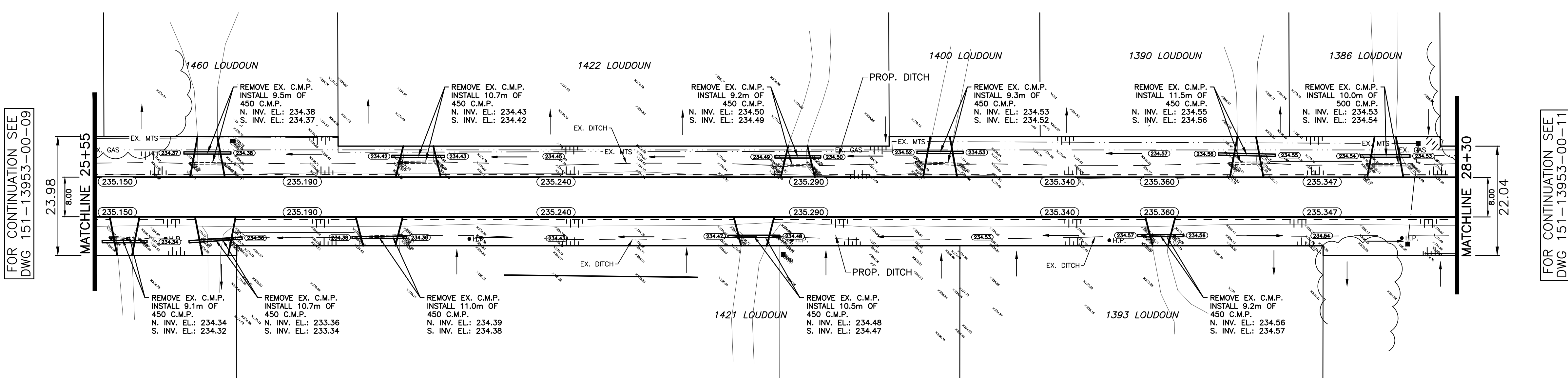
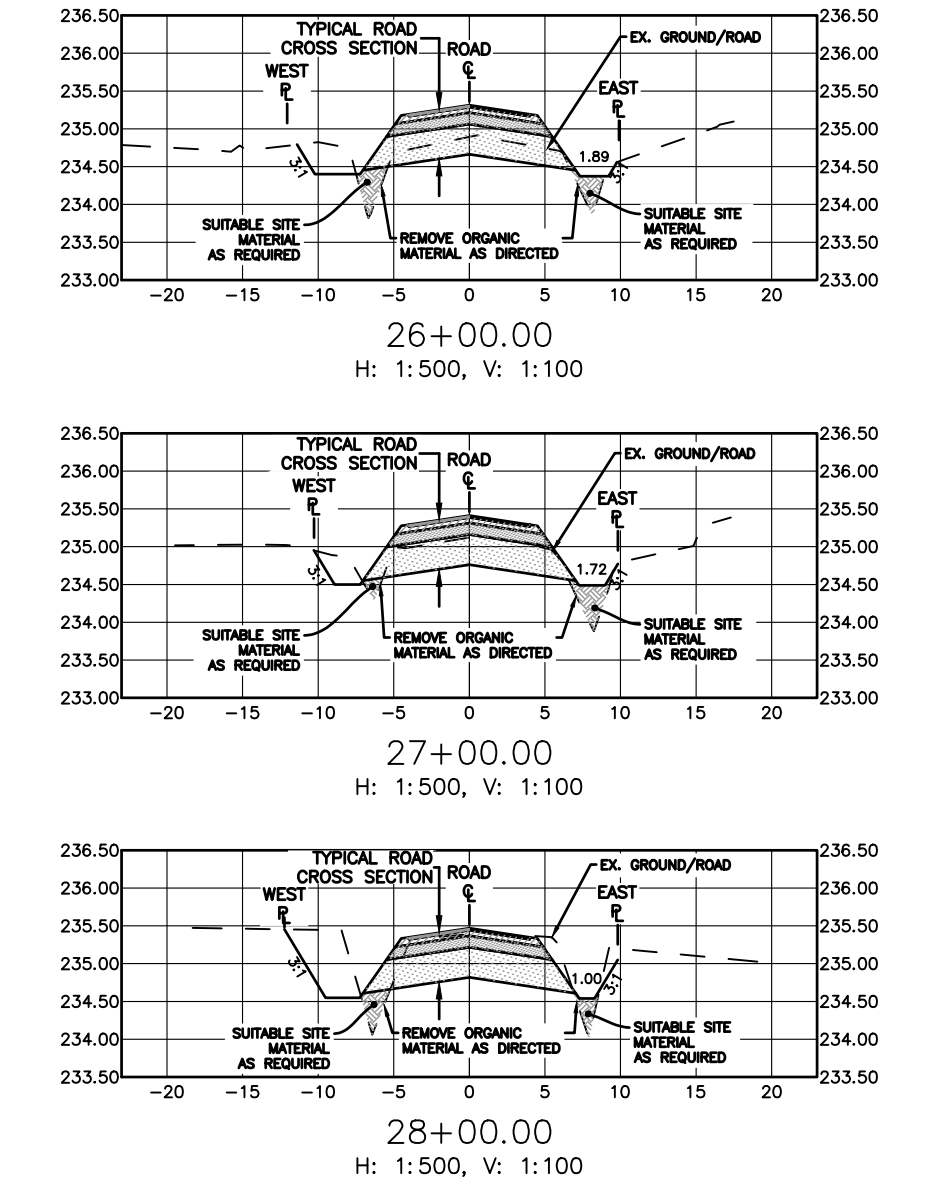
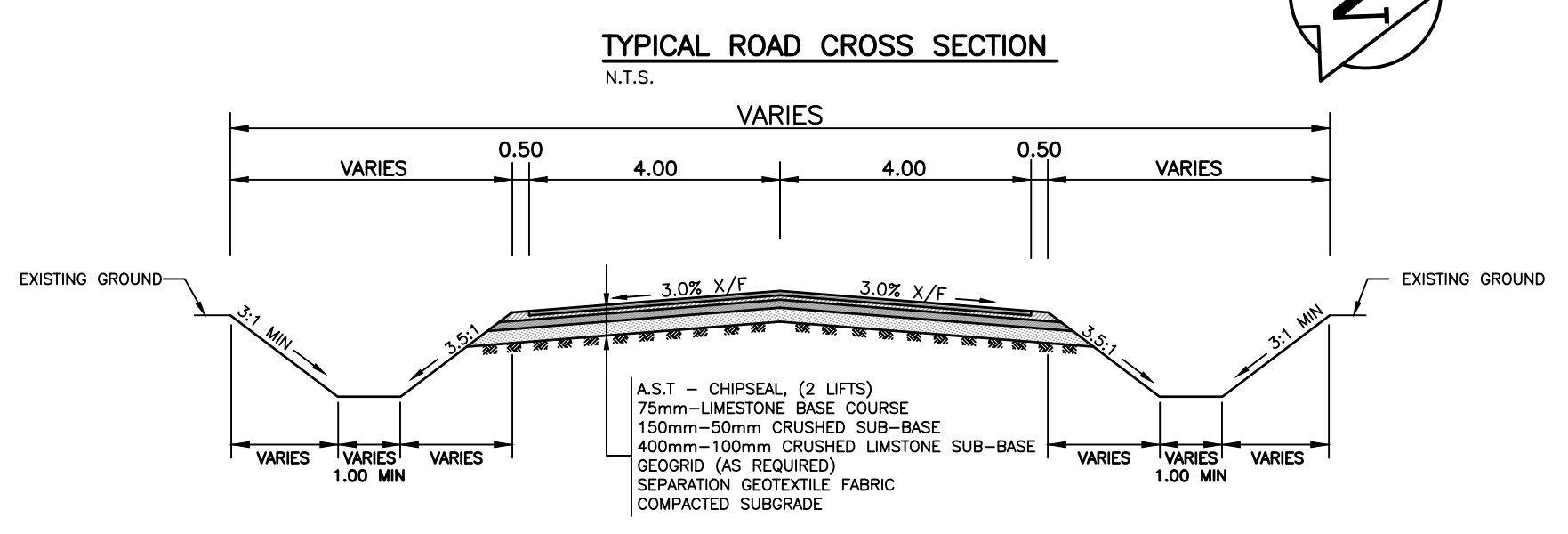


- GENERAL NOTES**
1. ALL WORK TO CONFORM TO THE LATEST CITY OF WINNIPEG CONSTRUCTION SPECIFICATIONS
  2. CLEARING AND GRUBBING LIMITS AS DIRECTED BY CONTRACT ADMINISTRATOR
  3. ALL MANHOLES, VALVES AND OTHER APPURTENANCES TO BE ADJUSTED AS DIRECTED BY CONTRACT ADMINISTRATOR
  4. ALL DITCHES TO BE REGRADED AS DIRECTED BY CONTRACT ADMINISTRATOR
  5. REMOVAL OF ORGANIC MATERIAL AS DIRECTED BY CONTRACT ADMINISTRATOR
  6. ALL PRIVATE APPROACHES TO BE REGRADED AND RESTORED AS DIRECTED BY CONTRACT ADMINISTRATOR
  7. PREVENT DAMAGE TO EXIST TREES OUTSIDE OF WORK LIMITS
  8. LANDSCAPING LIMITS AS DIRECTED BY CONTRACT ADMINISTRATOR

**CHAINAGE ALONG CENTERLINE OF LOUDOUN ROAD R.O.W.**



"Description of property limits, and existing and/or proposed features relative to these limits as shown on this drawing do not represent a Legal Survey. WSP makes no representation or guarantee that the property limit information is accurate. WSP accepts no responsibility for damages, if any, suffered by any third party as a result of decisions made or actions based on this drawing."

---○---	WATERMAIN	---	M.T.S.	---	WATERMAIN
---○---	HYDRANT	---	TRAFFIC SIGNAL	---	VALVE
---○---	VALVE	---	CONCRETE/ASPHALT	---	LAND DRAINAGE SEWER
---	CURB STOP	---	SIDEWALK	---	WASTE WATER SEWER
---	WASTE WATER SEWER	---	CURB RAMP	---	CENTERLINE
---	LAND DRAINAGE SEWER	---	PROPERTY LINE	---	SOUTH & EAST GUTTER
---	C.B. LEAD	---	ELEVATIONS	---	NORTH & WEST GUTTER
---	MANHOLE	---	TEST HOLE LOCATION	---	S. & E. PAD/GARG.
---	CATCH BASIN	---	CULVERT	---	N. & W. PAD/GARG.
---	GAS	---	TREES	---	
---	HYDRO	---		---	
---	EXISTING	---	LEGEND - PLAN	---	EXISTING
---	LEGEND - PLAN	---	PROPOSED	---	PROPOSED
---	PROPOSED	---	EXISTING	---	LEGEND - PROFILE
---	EXISTING	---	LEGEND - PROFILE	---	PROPOSED

**LOCATION APPROVED UNDERGROUND STRUCTURES**

NO.	REVISIONS	DATE	BY
01	ISSUED FOR TENDER	17/09/04	R.H.
02	CON REVIEW SUBMISSION	17/02/05	R.H.

NOTE:  
LOCATION OF UNDERGROUND STRUCTURES AS SHOWN ARE BASED ON THE BEST INFORMATION AVAILABLE BUT NO GUARANTEE IS GIVEN THAT ALL EXISTING UTILITIES ARE SHOWN OR THAT THE GIVEN LOCATIONS ARE EXACT. CONFIRMATION OF EXISTENCE AND EXACT LOCATION OF ALL SERVICES MUST BE OBTAINED FROM THE INDIVIDUAL UTILITIES BEFORE PROCEEDING WITH CONSTRUCTION.

**WSP**

1600 BUFFALO PLACE  
WINNIPEG, MB, R3T 6B8  
PHONE: 204-477-6650  
FAX: 204-474-2864  
WWW.WSPGROUP.COM

DESIGNED BY: R.H.      CHECKED BY: S.M.  
DRAWN BY: R.H.      APPROVED BY: I.McK.  
HOR. SCALE: 1:500      RELEASED FOR CONSTRUCTION  
VERT. SCALE: 1:25

DATE: FEBRUARY 2016

ENGINEERS SEAL

CONSULTANT DRAWING NO. 151-13953-00-10

**THE CITY OF WINNIPEG**  
PUBLIC WORKS DEPARTMENT

**2016 GRANULAR RENEWALS**  
LOUDOUN ROAD

FROM MATCHLINE AT STA. 25+55  
TO MATCHLINE AT STA. 28+30  
CHIPSEAL PAVEMENT

CITY DRAWING NO. SHEET 10 OF 13

221-2017

