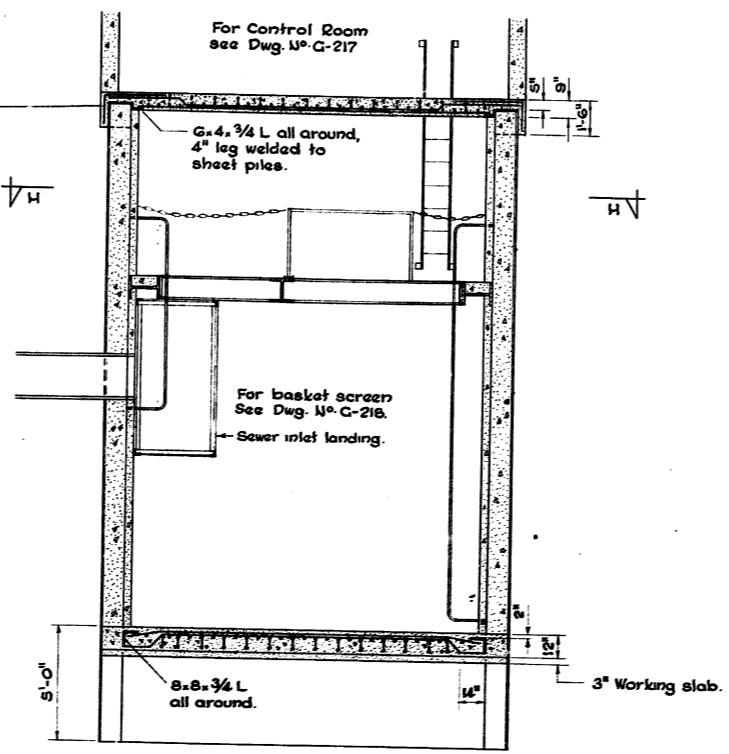


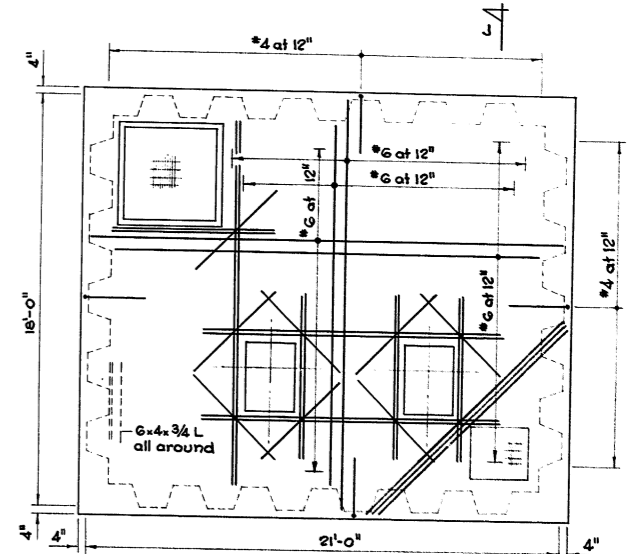
Section H-H

Steel sheet piles MZ-27 by United States Steel.

Nelson studs at 18" vertical
Wire fabric layer 6x6x 5/5.
Conc. lining 4" min.



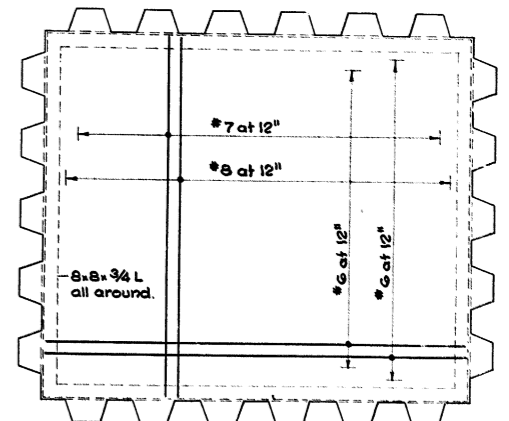
Section J-J



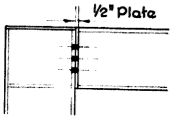
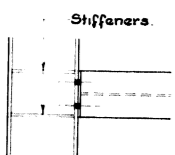
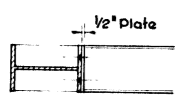
Control Room Floor

Additional bars around openings to be #8. All other bars to be cut to suit.

See also Control Room Floor Dwg. No. C-217



Wet Well Floor

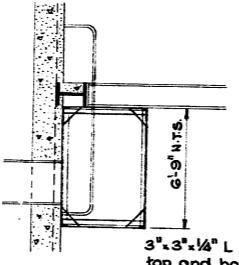
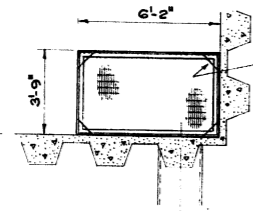


Detail 1

Detail 2

Detail 3

Note.
• Bolts 1" High strength A325.
• Stiffeners 1/2" thick.
• 1/2" thick plate welded to ends of all members for butting.
• Provide 4 supports for each member.
• Fabricate supports from 1/2" plate.



Section K

Section L

Sewer Inlet Landing

9x1/4" gusset plates, 3 per corner top and bottom.

Note. Angles to be galv. and supplied ready for assembly in wet well with 1/2" stainless st. bolts.

3"x3"x1/4" L frame top and bottom and 4 vert. corners.

NOTES
• For floor elevations see Dwg. No. C-218.
• For ladder detail see Dwg. No. C-218.



DAMAS AND SMITH LIMITED CONSULTING ENGINEERS TORONTO · LONDON · WINNIPEG			THE METROPOLITAN CORPORATION OF GREATER WINNIPEG STREETS AND TRANSIT DIVISION RELOCATION OF ROUTE 20 ALTERNATIVE NO. 2 WET WELL LAYOUT - STEEL SHEET PILES		
REV.	BY	DATE	DESCRIPTION	DRAWN	CHECK
1	R.B.	Oct. 67	LADDERS AND ADDITIONAL NOTES ADDED.	R.J.B.	
				DATE	SEPT. 1967.
				Approved	Engineer of Streets and Traffic
				DRAWING No.	785 - G219

