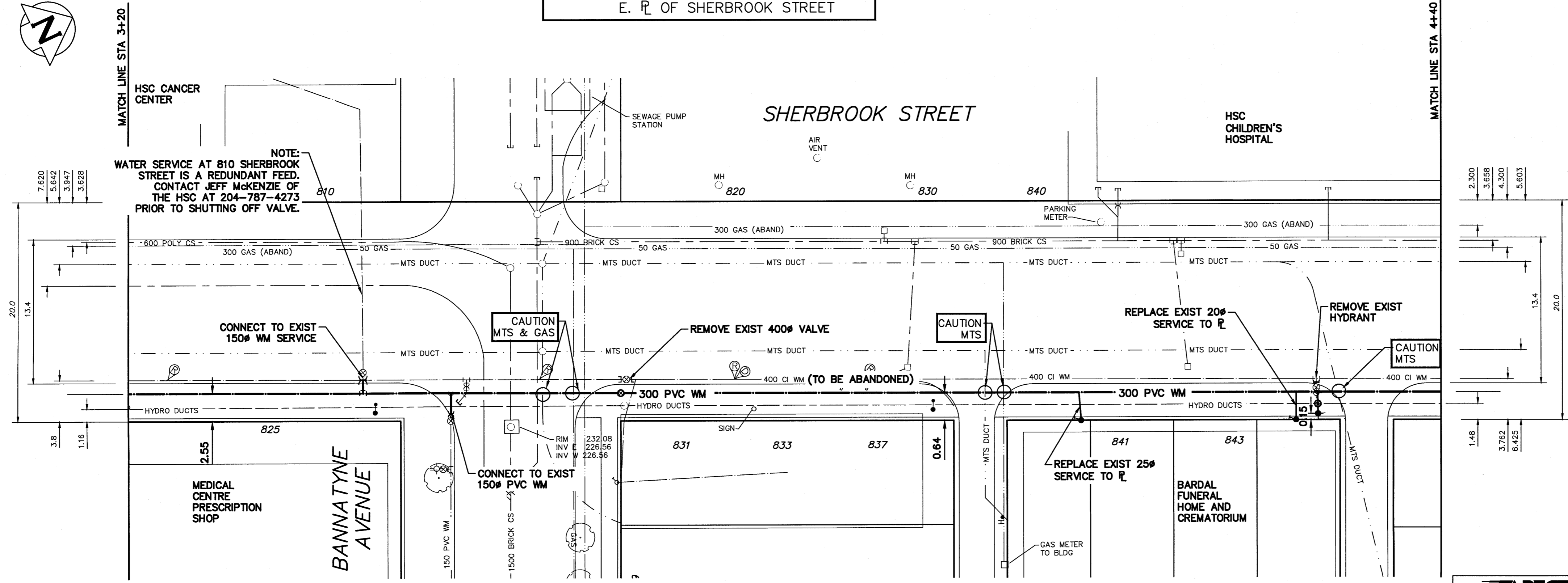
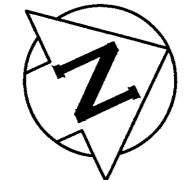


| WATER SERVICE INFORMATION      |                             |                            |   |                |  |
|--------------------------------|-----------------------------|----------------------------|---|----------------|--|
| ADDRESS                        | SIZE (mm) MATERIAL (STREET) | SIZE (mm) MATERIAL (PROP.) | SHORT & LONG MEASUREMENT                    | CORP. LOCATION | REMARKS  |
| 810 SHERBROOK ST RESIDENTIAL   | 150 COPPER                  | 25 COPPER                  | 2.44 WEL OF BUILDING 20 EEL OF SHERBROOK    | 1.37 N OF S.C. | -  |
| 831 SHERBROOK ST RESIDENTIAL   | 25 COPPER                   | 25 COPPER                  | 2.44 WEL OF BUILDING 20 EEL OF SHERBROOK    | 1.37 N OF S.C. | -  |
| * 841 SHERBROOK ST COMMERCIAL  | 25 LEAD                     | 25 LEAD                    | 6.40 NSL OF BUILDING 42.06>NNL OF BANNATYNE | 0.30 S OF S.C. | RENEW TO PL WITH 25 COPPER POSSIBLE LEAD SERVICE |
| * 843 SHERBROOK ST RESIDENTIAL | 20 LEAD                     | 20 LEAD                    | 3.96 SNL BLOCK 39.32 SSL OF WILLIAM         | SAME AS S.C.   | RENEW TO PL WITH 20 COPPER POSSIBLE LEAD SERVICE |

\* SERVICES TO BE RENEWED TO R. ALL OTHERS TO BE RECONNECTED

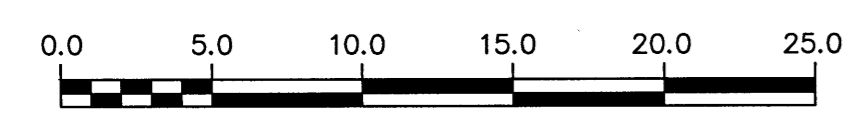
NOTE: CHAINAGES SHOWN ARE ALONG E. R. OF SHERBROOK STREET



**PROPERTY LIMITS DELINEATION**  
 DELINEATION OF PROPERTY LIMITS AS SHOWN ON THIS DWG DOES NOT REPRESENT A "LEGAL SURVEY". KGS GROUP MAKES NO REPRESENTATION OR WARRANTY AS TO THE ACCURACY OF PROPERTY LIMITS DELINEATED ON THIS DWG, NOR ON THE DIMENSIONAL ACCURACY OF DWG FEATURES RELATIVE TO THOSE PROPERTY LIMITS.

**METRIC**  
 WHOLE NUMBERS INDICATE MILLIMETRES  
 DECIMALIZED NUMBERS INDICATE METRES

NOTE: ALL VALVES TO BE INSTALLED COUNTERCLOCKWISE TO CLOSE



**WARNING**  
 IF POWER EQUIPMENT OR EXPLOSIVES ARE TO BE USED FOR EXCAVATION ON THIS PROJECT THE CONTRACTOR MUST:  
 1) NOTIFY THE GAS COMPANY OF THE PROPOSED LOCATION OF EXCAVATION.  
 2) TAKE PRECAUTION TO AVOID DAMAGE TO GAS COMPANY INSTALLATIONS.  
 SEE PROVINCIAL REGULATION 210/72 FOR DETAILS

**LOCATION APPROVED UNDERGROUND STRUCTURES**  
 SUPV. U/G STRUCTURES COMMITTEE DATE  
 NOTE:  
 LOCATION OF UNDERGROUND STRUCTURES AS SHOWN ARE BASED ON THE BEST INFORMATION AVAILABLE BUT NO GUARANTEE IS GIVEN THAT ALL EXISTING UTILITIES ARE SHOWN OR THAT THE GIVEN LOCATIONS ARE EXACT. CONFIRMATION OF EXISTENCE AND EXACT LOCATION OF ALL SERVICES MUST BE OBTAINED FROM THE INDIVIDUAL UTILITIES BEFORE PROCEEDING WITH CONSTRUCTION.

| B.M. ELEV. | NO. | ISSUED FOR CONSTRUCTION | DATE     | BY  |
|------------|-----|-------------------------|----------|-----|
|            | 0   | ISSUED FOR CONSTRUCTION | 17/04/18 | RSD |
|            | NO. | REVISIONS               | DATE     | BY  |

**KGS GROUP CONSULTING ENGINEERS**

DESIGNED BY: T.L.E. CHECKED BY: [Signature]  
 DRAWN BY: D.M.W. APPROVED BY: [Signature]  
 SCALE: HORIZONTAL 1:250 VERTICAL 1:50  
 RELEASED FOR CONSTRUCTION: [Signature]  
 DATE: 2017 04 18 DATE: APR-18/19  
 PLOT DATE: 2017 04 18

**APECM**  
 Certificate of Authorization  
 KGS Group  
 No. 245

ENGINEER'S SEAL  
  
 CONSULTANT DRAWING NUMBER: 17-0107-001\_C04

**THE CITY OF WINNIPEG**  
 WATER AND WASTE DEPARTMENT  
 ENGINEERING DIVISION

2017 WATER MAIN RENEWALS  
 (CONTRACT 6)  
 SHERBROOK STREET  
 NOTRE DAME AVENUE TO WILLAM AVENUE  
 STA 3+20 TO STA 4+40

SHEET 4 OF 11  
 CITY DRAWING NUMBER: D-14634