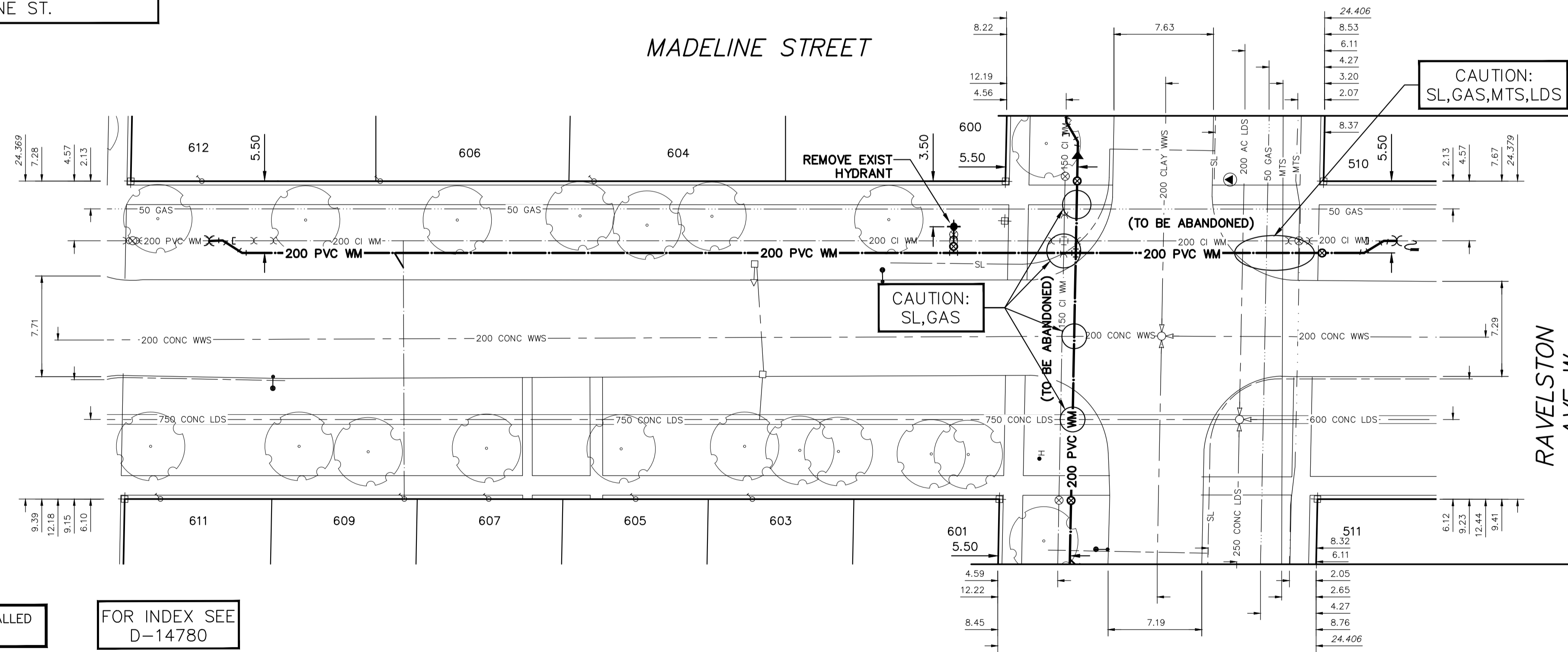


WATER SERVICE INFORMATION

ADDRESS	SIZE (mm) MATERIAL (STREET)	SIZE (mm) MATERIAL (PROP.)	SHORT & LONG MEASUREMENT	CORP. LOCATION	REMARKS
603 MADELINE ST	-	20	2.04 SNL HSE	-	RECONNECT SERVICE
RESIDENTIAL	-	CU	18.928>NNL RAVELSTON AVE W	-	RECONNECT SERVICE
604 MADELINE ST	-	20	2.08 SNL HSE	-	RECONNECT SERVICE
RESIDENTIAL	-	CU	31.552>NNL RAVELSTON AVE W	-	RECONNECT SERVICE
605 MADELINE ST	-	20	2.60 NSL HSE	-	RECONNECT SERVICE
RESIDENTIAL	-	CU	27.882>NNL RAVELSTON AVE W	-	RECONNECT SERVICE
606 MADELINE ST	-	20	1.37>NNL HSE	-	RECONNECT SERVICE
RESIDENTIAL	-	CU	47.979>NNL RAVELSTON AVE W	-	RECONNECT SERVICE
607 MADELINE ST	-	20	2.03 NSL HSE	-	RECONNECT SERVICE
RESIDENTIAL	-	CU	27.905>SSL ROSSEAU AVE W	-	RECONNECT SERVICE
609 MADELINE ST	20	20	0.80 SSL HSE	OPP S/C	RECONNECT SERVICE
RESIDENTIAL	-	CU	21.434>SSL ROSSEAU AVE W	-	RECONNECT SERVICE
611 MADELINE ST	-	20	6.58 NSL HSE	-	RECONNECT SERVICE
RESIDENTIAL	-	CU	2.742>SSL ROSSEAU AVE W	-	RECONNECT SERVICE
612 MADELINE ST	-	20	2.17 SSL HSE	-	RECONNECT SERVICE
RESIDENTIAL	-	CU	5.440>SSL ROSSEAU AVE W	-	RECONNECT SERVICE

*SERVICES TO BE RENEWED TO R. ALL OTHERS TO BE RECONNECTED

NOTE: CHAINAGES SHOWN ARE ALONG E. R. OF MADELINE ST.

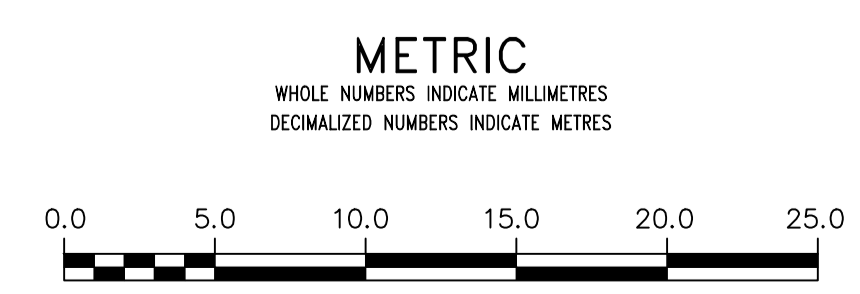


FOR CONTINUATION SEE DWG D-14786

NOTE: ALL VALVES TO BE INSTALLED CLOCKWISE TO CLOSE

FOR INDEX SEE D-14780

FOR CONTINUATION SEE DWG D-14786



WARNING
IF POWER EQUIPMENT OR EXPLOSIVES ARE TO BE USED FOR EXCAVATION ON THIS PROJECT THE CONTRACTOR MUST:
1) NOTIFY THE GAS COMPANY OF THE PROPOSED LOCATION OF EXCAVATION.
2) TAKE PRECAUTION TO AVOID DAMAGE TO GAS COMPANY INSTALLATIONS.
SEE PROVINCIAL REGULATION 210/72 FOR DETAILS

LOCATION APPROVED
UNDERGROUND STRUCTURES
SUPV. U/G STRUCTURES COMMITTEE DATE
NOTE:
LOCATION OF UNDERGROUND STRUCTURES AS SHOWN ARE BASED ON THE BEST INFORMATION AVAILABLE BUT NO GUARANTEE IS GIVEN THAT ALL EXISTING UTILITIES ARE SHOWN OR THAT THE GIVEN LOCATIONS ARE EXACT. CONFIRMATION OF EXISTENCE AND EXACT LOCATION OF ALL SERVICES MUST BE OBTAINED FROM THE INDIVIDUAL UTILITIES BEFORE PROCEEDING WITH CONSTRUCTION.

B.M. ELEV.	NO.	REVISIONS	DATE	BY

DESIGNED BY	TS	CHECKED BY	SC
DRAWN BY	RS	APPROVED BY	KZ
SCALE:	RELEASED FOR CONSTRUCTION		
HORIZONTAL 1:250	KAS ZUREK		
VERTICAL 1:50	DATE 2017 06 23		
DATE 2017 06 23	DATE 2017 06 23		

ENGINEER'S SEAL
ORIGINAL SIGNED BY S.J.R. COURNOYER 17/06/23
CONSULTANT DRAWING NUMBER

THE CITY OF WINNIPEG
WATER AND WASTE DEPARTMENT
ENGINEERING DIVISION
2017 WATER MAIN RENEWALS
CONTRACT 1
MADELINE STREET
RAVELSTON AVENUE WEST TO
67 W OF RAVELSTON AVENUE WEST
SHEET 7 OF 13
CITY DRAWING NUMBER
D-14785