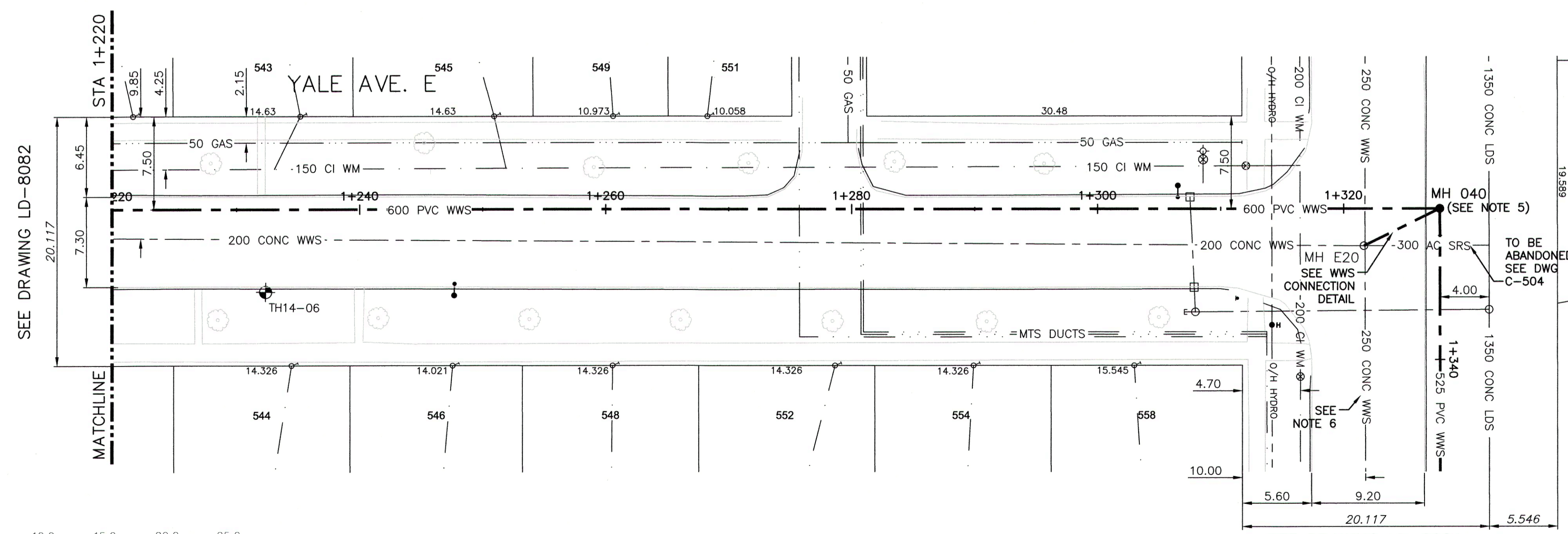


NOTE: CHAINAGES SHOWN ARE ALONG CL OF PROPOSED PIPE

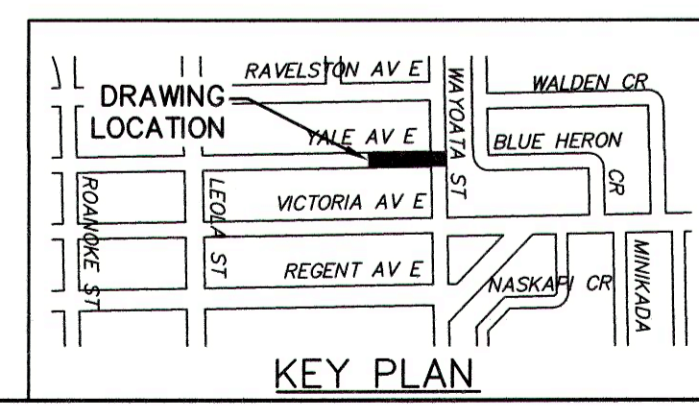


WARNING
 IF POWER EQUIPMENT OR EXPLOSIVES ARE TO BE USED FOR EXCAVATION ON THIS PROJECT THE CONTRACTOR MUST:
 1) NOTIFY THE GAS COMPANY OF THE PROPOSED LOCATION OF EXCAVATION.
 2) TAKE PRECAUTION TO AVOID DAMAGE TO GAS COMPANY INSTALLATIONS. SEE PROVINCIAL REGULATION 210/72 FOR DETAILS.

- CONSTRUCTION NOTES:**
- SEWER AND WATER SERVICES SHOWN ON DRAWING ARE APPROXIMATE ONLY.
 - LOCATION OF ALL SEWER AND WATER LINES TO BE CONFIRMED IN FIELD.
 - INSTALL NEW SEWER BY TRENCHLESS METHODS, UNLESS OTHERWISE NOTED.
 - FRONT ACCESS TO ALL YALE AVENUE PROPERTIES TO BE MAINTAINED AT ALL TIMES DURING CONSTRUCTION PERIOD.
 - MANHOLE BASE FOR NEW MH 040 TO BE PROVIDED BY CITY, AS A MANHOLE OF 2100x1800 HIGH BASE WITH PRE-CAST 900 ENTRY/EXIT HOLES HAVE ALREADY BEEN INSTALLED AS DROP MANHOLE (SD-010D). REFER TO SPECIFICATIONS FOR DETAILS.
 - EXISTING 250 WWS ON WAYOATA STREET TO BE ABANDONED AFTER ALL CONNECTIONS DIVERTED TO NEW 525 WWS AS PER SPECIFICATIONS.



APEGM
 Certificate of Authorization
 CH2M HILL Canada Ltd.
 No. 1441



200 WM	WATERMAIN	200 WM	SL, HYDRO	150 WM	WATERMAIN	150 WM
⊕	HYDRANT	⊕	MTS	⊕	HYDRANT	⊕
⊕	VALVE	⊕	TRAFFIC SIGNALS	⊕	VALVE	⊕
525 LDS	LAND DRAINAGE SEWER	525 LDS	50 GAS	50 GAS	300 LDS	LAND DRAINAGE SEWER
375 WWS	WASTEWATER SEWER	375 WWS	⊕	⊕	250 WWS	WASTEWATER SEWER
○	MANHOLE	●	*-*-*	-X-	⊕	PROFILE
□	CATCH BASIN	⊕	• • • •	⊕	⊕	GROUND ABOVE PIPE
▽	CURB INLET	▽	POLE - HYDRO, MTS	⊕	⊕	
⊕	JUNCTIONS	⊕	○	○	○	
⊕	CULVERT	⊕	○	○	○	
⊕	ANODE	⊕	○	○	○	
EXISTING	LEGEND-PLAN	PROPOSED	EXISTING	LEGEND-PLAN	PROPOSED	EXISTING

LOCATION APPROVED UNDERGROUND STRUCTURES		DATE	
SUPV. U/G STRUCTURES COMMITTEE		DATE	
NOTE: LOCATION OF UNDERGROUND STRUCTURES AS SHOWN ARE BASED ON THE BEST INFORMATION AVAILABLE BUT NO GUARANTEE IS GIVEN THAT ALL EXISTING UTILITIES ARE SHOWN OR THAT THE GIVEN LOCATIONS ARE EXACT. CONFIRMATION OF EXISTENCE AND EXACT LOCATION OF ALL SERVICES MUST BE OBTAINED FROM THE INDIVIDUAL UTILITIES BEFORE PROCEEDING WITH CONSTRUCTION.			

DESIGNED BY	MAF	CHECKED BY	MD
DRAWN BY	JBC	APPROVED BY	<i>[Signature]</i>
SCALE:	HORIZONTAL 1:250	RELEASSED FOR CONSTRUCTION	<i>[Signature]</i>
	VERTICAL 1:50	CONSULTANT DRAWING NUMBER	C-233



THE CITY OF WINNIPEG
 WATER AND WASTE DEPARTMENT
 ENGINEERING DIVISION

TRANSCONA SEWER RELIEF WORKS
 CONTRACT NO. 3
 YALE AVENUE E.
 FROM STA 1+220 TO WAYOATA STREET

SHEET 7 OF 19
 CITY DRAWING NUMBER LD-8083