

WWS CONNECTION TO MH 081

NOTE: CHAINAGES SHOWN ARE ALONG CL OF PROPOSED PIPE

**WARNING**  
 IF POWER EQUIPMENT OR EXPLOSIVES ARE TO BE USED FOR EXCAVATION ON THIS PROJECT THE CONTRACTOR MUST:  
 1) NOTIFY THE GAS COMPANY OF THE PROPOSED LOCATION OF EXCAVATION.  
 2) TAKE PRECAUTION TO AVOID DAMAGE TO GAS COMPANY INSTALLATIONS.  
 SEE PROVINCIAL REGULATION 210/72 FOR DETAILS

- CONSTRUCTION NOTES:**
- SEWER AND WATER SERVICES SHOWN ON DRAWING ARE APPROXIMATE ONLY.
  - LOCATION OF ALL SEWER AND WATER LINES TO BE CONFIRMED IN FIELD.
  - INSTALL NEW SEWER BY TRENCHLESS METHODS, UNLESS OTHERWISE NOTED.
  - FRONT ACCESS TO ALL HAROLD AVENUE PROPERTIES TO BE MAINTAINED AT ALL TIMES DURING CONSTRUCTION PERIOD.
  - EXISTING 200 WWS IN HAROLD AVENUE TO BE ABANDONED AFTER ALL LIVE CONNECTIONS DIVERTED TO NEW 375 WWS AS PER SPECIFICATIONS.
  - EXISTING CROSS CONNECTION COMPRISING OF FLAP AND SLUICE GATES BETWEEN WWS AND LDS SYSTEMS TO BE INVESTIGATED. THE SALVAGE POTENTIAL TO BE PROVIDED TO THE CONTRACT ADMINISTRATOR PRIOR TO REMOVAL AS PER SPECIFICATIONS.
  - EXISTING OUTGOING 200 WWS PIPE TO BE ABANDONED AFTER ALL LIVE CONNECTIONS DIVERTED TO NEW 375 WWS AS PER SPECIFICATIONS.

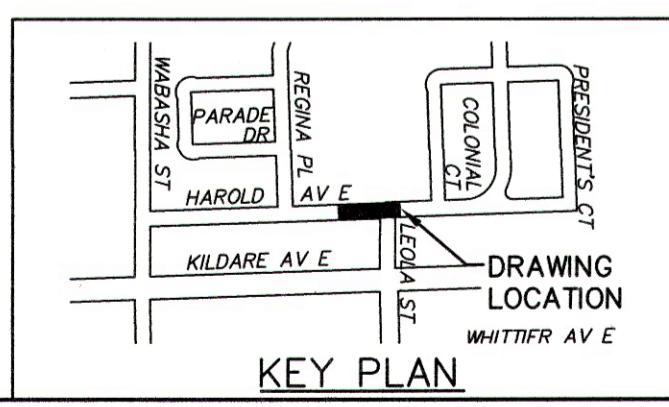
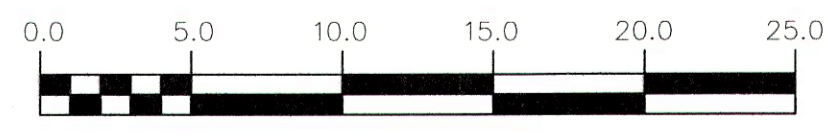
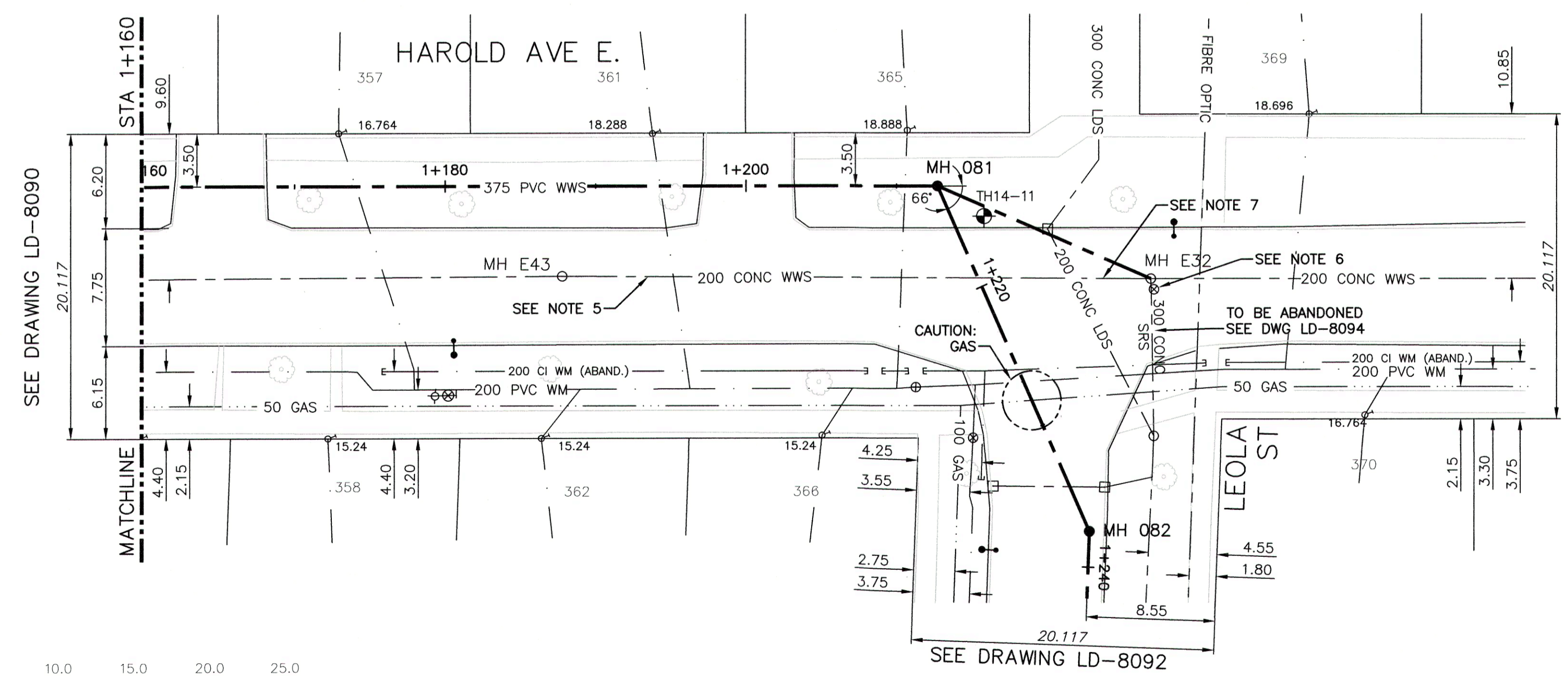
SEWER JUNCTION INFORMATION FROM SEWER VIDEO INSPECTION  
DISTANCE FROM MH ID E43

DISTANCE	DIAMETER	CLOCK
11.4	150	1
14.0	150	11

SEWER JUNCTION INFORMATION FROM SEWER VIDEO INSPECTION  
DISTANCE FROM MH ID E32

DISTANCE	DIAMETER	CLOCK
16.4	150	1
17.8	150	9
20.1	150	11
32.4	150	1
33.7	150	11

ALL EXISTING LIVE SEWER SERVICES TO BE RENEWED FROM PROPERTY LINE TO NEW 375 WWS



200 WM	WATERMAIN	200 WM	SL, HYDRO	150 WM	WATERMAIN	150 WM
⊕	HYDRANT	⊕	MTS	⊕	HYDRANT	⊕
⊕	VALVE	⊕	TRAFFIC SIGNALS	⊕	VALVE	⊕
525 LDS	LAND DRAINAGE SEWER	525 LDS	50 GAS	300 LDS	LAND DRAINAGE SEWER	300 LDS
375 WWS	WASTEWATER SEWER	375 WWS	50 GAS	250 WWS	WASTEWATER SEWER	250 WWS
○	MANHOLE	●	***	⊕	⊕	⊕
□	CATCH BASIN	□	POLE - HYDRO, MTS	⊕	⊕	⊕
▽	CURB INLET	▽	CURB STOP	⊕	⊕	⊕
⊕	JUNCTIONS	⊕	GUY ANCHOR	⊕	⊕	⊕
⊕	CULVERT	⊕	LIGHT STANDARD	⊕	⊕	⊕
⊕	ANODE	⊕	TREE	⊕	⊕	⊕
⊕	EXISTING	⊕	LEGEND-PLAN	⊕	PROPOSED	⊕
⊕	LEGEND-PLAN	⊕	LEGEND-PROFILE	⊕	PROPOSED	⊕

LOCATION APPROVED UNDERGROUND STRUCTURES

SUPV. U/G STRUCTURES COMMITTEE DATE

NOTE:  
 LOCATION OF UNDERGROUND STRUCTURES AS SHOWN ARE BASED ON THE BEST INFORMATION AVAILABLE BUT NO GUARANTEE IS GIVEN THAT ALL EXISTING UTILITIES ARE SHOWN OR THAT THE GIVEN LOCATIONS ARE EXACT. CONFIRMATION OF EXISTENCE AND EXACT LOCATION OF ALL SERVICES MUST BE OBTAINED FROM THE INDIVIDUAL UTILITIES BEFORE PROCEEDING WITH CONSTRUCTION.

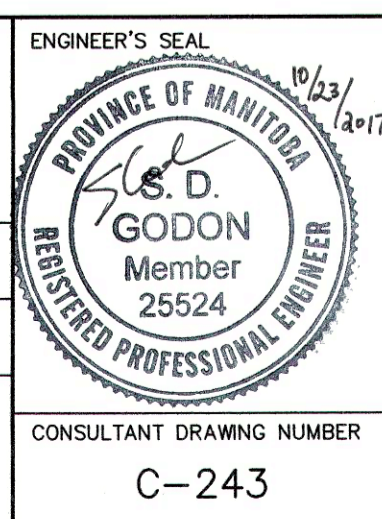
CONSTRUCTION COMPLETION DATE: YYYY MM DD

DESIGNED BY: MAF  
 CHECKED BY: MD

DRAWN BY: JBC  
 APPROVED BY: [Signature]

SCALE: HORIZONTAL 1:250  
 VERTICAL 1:50

ISSUED FOR TENDER 10/17 JBC



**THE CITY OF WINNIPEG**  
 WATER AND WASTE DEPARTMENT  
 ENGINEERING DIVISION

TRANSCONA SEWER RELIEF WORKS  
 CONTRACT NO. 3  
 HAROLD AVENUE E.  
 FROM STA 1+160 TO LEOLA ST

SHEET 15 OF 19  
 CITY DRAWING NUMBER  
 LD-8091