

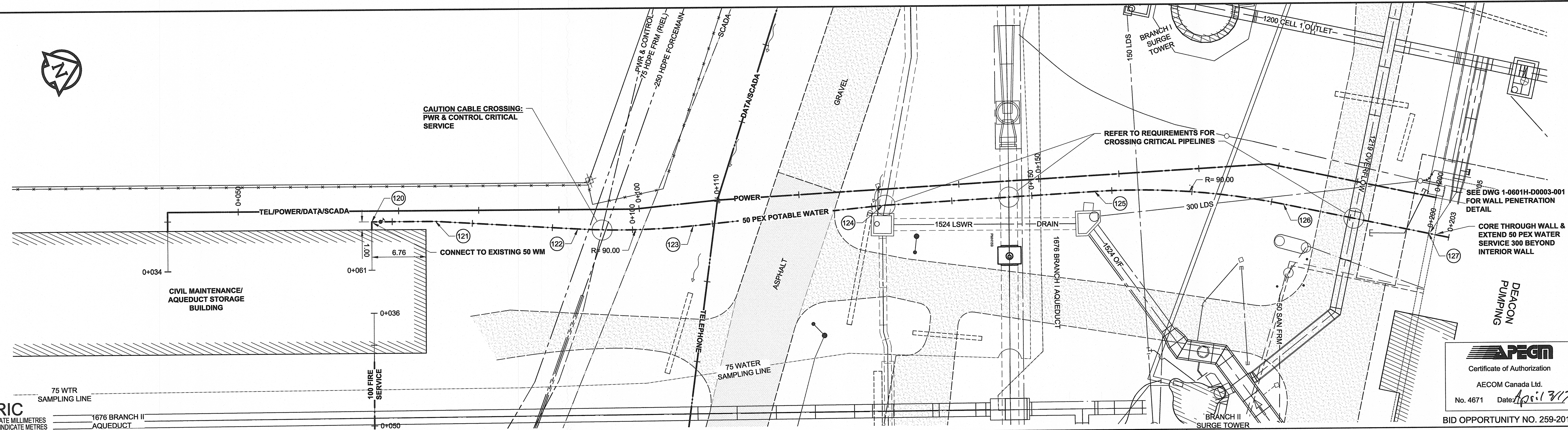
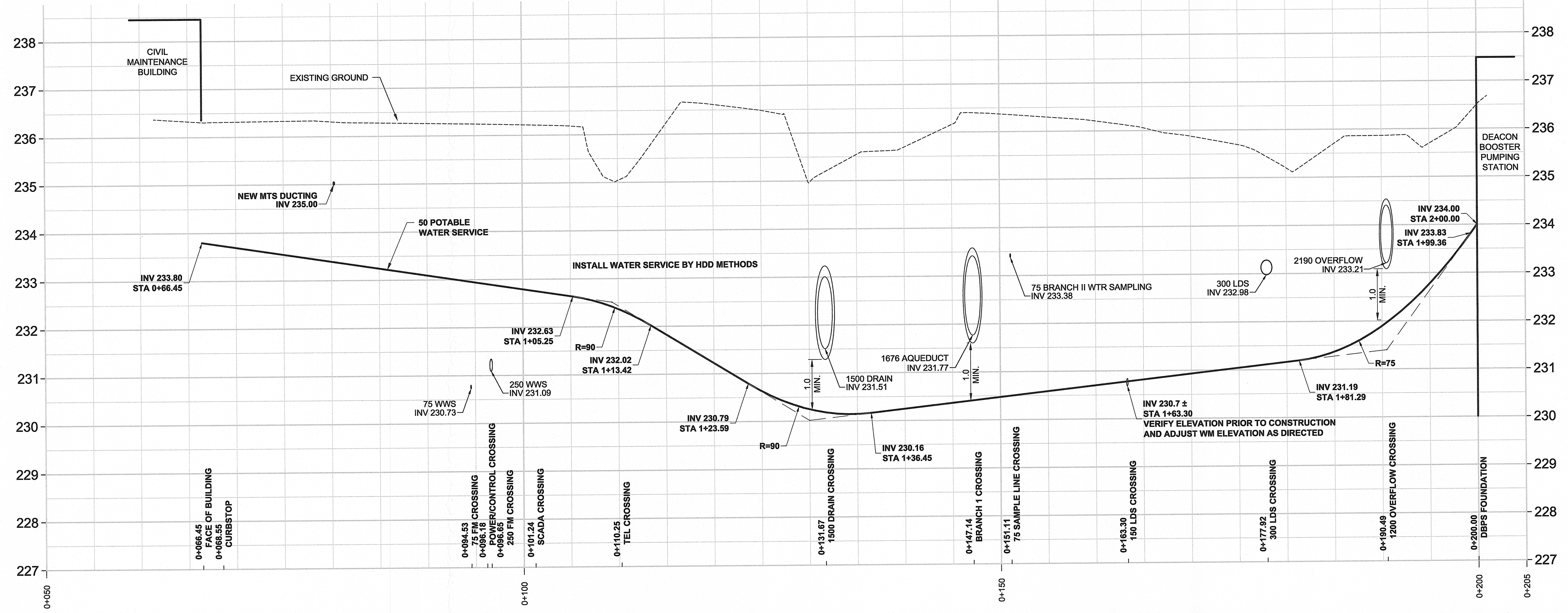
D SIZE 22" x 34" (559mm x 864mm)

PLOT: 4/3/2017 9:43:41 AM

AECOM REVIEW DRFT CHK
AECOM FILE NAME: 60516883-SHT-30-0000-C-1007.dwg, Saved By: dencoudeny

Coordinate Table			
Point #	Northing	Easting	Description
120	552394.56	647676.23	POTABLE WATER PT 1
121	552394.01	647678.96	POTABLE WATER PT 2
122	552396.31	647686.10	POTABLE WATER PT 3
123	552397.80	647690.80	POTABLE WATER PT 4
124	552400.92	647696.75	POTABLE WATER PT 5
125	552402.28	647704.44	POTABLE WATER PT 6
126	552404.77	647714.19	POTABLE WATER PT 7
127	552406.45	647723.97	POTABLE WATER PT 8

- NOTES:
- SOFT DIG AND EXPOSE ALL UTILITIES AT CROSSING POINTS PRIOR TO TRENCHING. ADJUST TRENCH ELEVATIONS AS DIRECTED WHERE NEW PLANT ELEVATION CONFLICTS WITH EXISTING.
 - ALL TRENCHES IN OR WITHIN 1.0 OF ROADWAYS ARE TO BE BACKFILLED WITH CLASS 2 BACKFILL. BACKFILL IN LANDSCAPED AREAS IS TO BE CLASS 4 BACKFILL.
 - PROVIDED COMPACTED GRANULAR MATERIAL TO SUPPORT UTILITIES WHERE CROSSING BENEATH.
 - RESTORE ALL SURFACES TO A CONDITION EQUAL TO OR BETTER THAN ORIGINAL CONDITIONS.
 - ALL PIPING TO BE INSTALLED WITH TRACER WIRE. SEE DETAIL DWG No. 1-0601H-D0003-001.



METRIC
WHOLE NUMBERS INDICATE MILLIMETRES
DECIMALIZED NUMBERS INDICATE METRES

150 WM	WATERMAIN	150 WM	CURB STOP	150 WM	WATERMAIN	150 WM
⊕	HYDRANT	⊕	REDUCER	⊕	HYDRANT	⊕
⊕	VALVE	⊕	COUPLING	⊕	VALVE	⊕
⊕	LAND DRAINAGE SEWER	⊕	ANODE	⊕	LAND DRAINAGE SEWER	⊕
⊕	WASTE WATER SEWER	⊕	HYDRO	⊕	WASTE WATER SEWER	⊕
⊕	MANHOLE	⊕	MTS	⊕	PAVEMENT CROWN	⊕
⊕	CATCH BASIN	⊕	GAS	⊕	N/W PROPERTY LINE	⊕
⊕	CURB INLET	⊕	TESTHOLE	⊕	S/E PROPERTY LINE	⊕
⊕	CULVERT	⊕	LAMP STANDARD	⊕	N/W GUTTER	⊕
⊕	PIPE ABANDONMENTS	⊕	TREE	⊕	S/E GUTTER	⊕
⊕	SURVEY BAR	⊕		⊕		⊕
⊕	EXISTING	⊕	LEGEND - PLAN	⊕	EXISTING	⊕
⊕	NEW	⊕	LEGEND - PROFILE	⊕	NEW	⊕

LOCATION APPROVED
UNDERGROUND STRUCTURES
SUPR. U/G STRUCTURES DATE
NOTE:
LOCATION OF UNDERGROUND STRUCTURES AS SHOWN ARE BASED ON THE BEST INFORMATION AVAILABLE. BUT NO GUARANTEE IS GIVEN THAT ALL EXISTING UTILITIES ARE SHOWN OR THAT THE GIVEN LOCATIONS ARE EXACT. CONFIRMATION OF EXISTENCE AND EXACT LOCATION OF ALL SERVICES MUST BE OBTAINED FROM THE INDIVIDUAL UTILITIES BEFORE PROCEEDING WITH CONSTRUCTION.

NO.	ISSUED FOR CONSTRUCTION	17/03/29	KLC
0	ISSUED FOR CONSTRUCTION	17/03/29	KLC
	REVISIONS	YY/MM/DD	BY

AECOM

DESIGNED BY: GSK
DRAWN BY: WJd
HOR. SCALE: 1:250
VERT. SCALE: 1:50

CHECKED BY: [Signature]
APPROVED BY: [Signature]
RELEASED FOR CONSTRUCTION: April 3/2017
DATE: [Signature]

PROFESSIONAL'S SEAL
A.B. BRAUN
Member
24453
REGISTERED PROFESSIONAL ENGINEER

CONSULTANT DRAWING NO.
60516883-SHT-30-0000-C-1007

THE CITY OF WINNIPEG
Winnipeg
WATER AND WASTE DEPARTMENT

CIVIL MAINTENANCE/AQUEDUCT STORAGE BUILDING
INSTALLATION OF ELECTRICAL AND COMMUNICATION UTILITIES AND SEWER AND WATER SERVICING

POTABLE WATER SERVICE
DEACON BOOSTER PUMPING STATION TO
CIVIL MAINTENANCE/AQUEDUCT STORAGE BUILDING

SHEET 7 OF 8
CITY DRAWING NUMBER
1-0601H-C0022-001
REV 0

AECOM
Certificate of Authorization
AECOM Canada Ltd.
No. 4671 Date: April 3/17
BID OPPORTUNITY NO. 259-2017