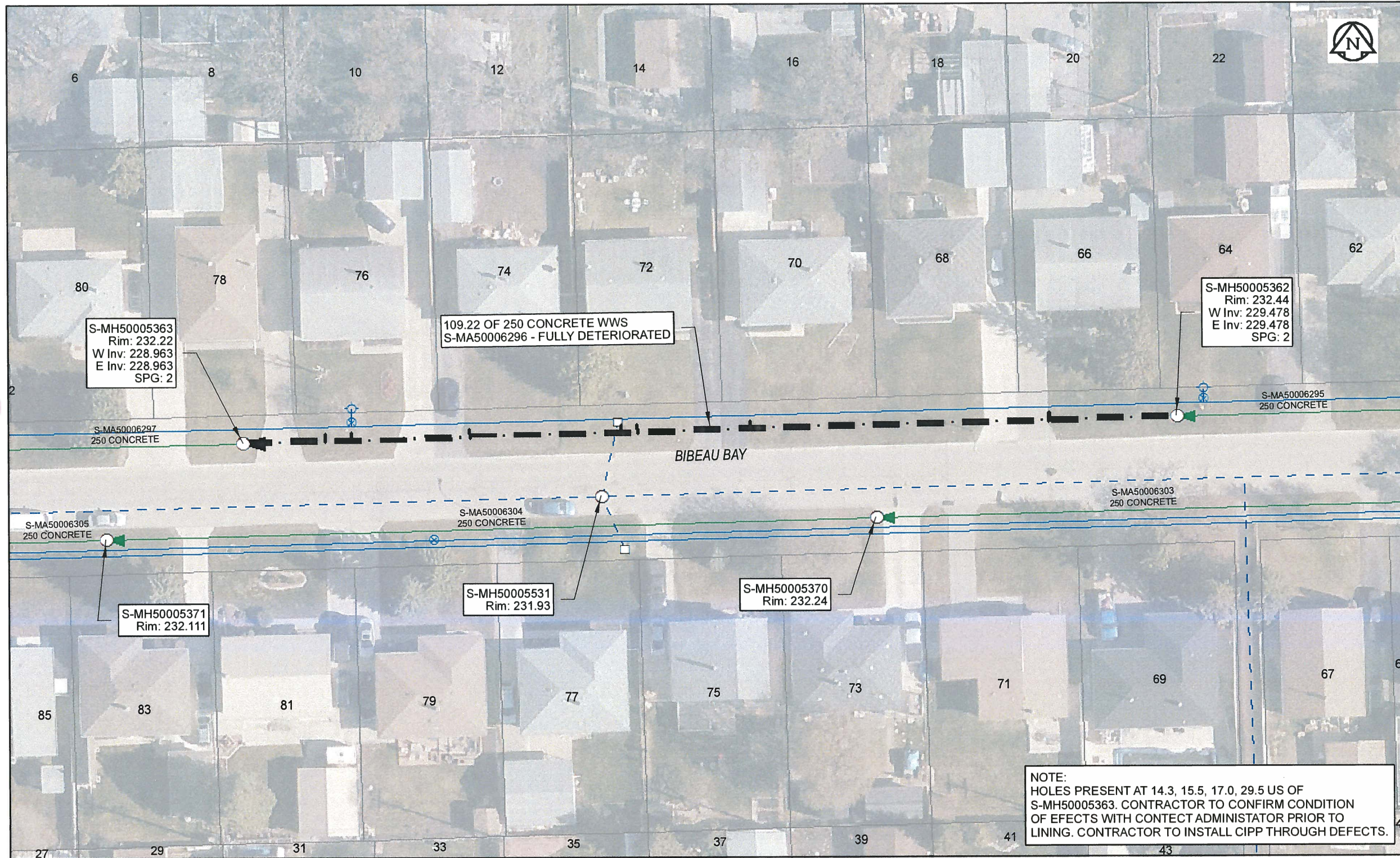


B SIZE 11" X 17" (279mm x 432mm)



Sewer Junction Information
(From Video Inspection)

| Reference MH | Distance | Size | Clock |
|--------------|----------|------|-------|
| S-MH50005362 | 015.0 | 150 | 02 |
| - | 015.2 | 100 | 02 |
| S-MH50005363 | 009.6 | 150 | 10 |
| - | 012.7 | 150 | 10 |
| - | 026.6 | 150 | 10 |
| - | 044.4 | 100 | 10 |
| - | 046.4 | 150 | 10 |
| - | 059.7 | 100 | 10 |

Traffic Controls
Regional Street Lane Closure Required: No
Impacted Regional Street: N/A

General Requirements:
Residential Street Restrictions

WARNING
IF POWER EQUIPMENT OR EXPLOSIVES ARE TO BE USED FOR EXCAVATION ON THIS PROJECT, THE CONTRACTOR MUST:
1) NOTIFY THE GAS COMPANY OF THE PROPOSED LOCATION OF EXCAVATION.
2) TAKE PRECAUTION TO AVOID DAMAGE TO GAS COMPANY INSTALLATIONS.
SEE PROVINCIAL REGULATION 140/92 FOR DETAILS

APEGM
Certificate of Authorization
AECOM Canada Ltd.
No. 4671 Date: April 10/17

METRIC
WHOLE NUMBERS INDICATE MILLIMETRES
DECIMALIZED NUMBERS INDICATE METRES
0 2.5 5 10 15 20
Meters
BID OPPORTUNITY NO. 261-2017

NOTE:
HOLES PRESENT AT 14.3, 15.5, 17.0, 29.5 US OF S-MH50005363. CONTRACTOR TO CONFIRM CONDITION OF EFFECTS WITH CONTECT ADMINISTRATOR PRIOR TO LINING. CONTRACTOR TO INSTALL CIPP THROUGH DEFECTS.

| | | | | | | |
|--------------------------|--|---|--|---|--|--|
| AECOM REVIEW DRFT CHK | LOCATION APPROVED UNDERGROUND STRUCTURES | Can-Net GPS Reference Station WINN/810 | | DESIGNED BY NK | CHECKED BY CM | |
| | SUPR. U/G STRUCTURES COMMITTEE DATE NOTE: LOCATION OF UNDERGROUND STRUCTURES AS SHOWN ARE BASED ON THE BEST INFORMATION AVAILABLE. BUT NO GUARANTEE IS GIVEN THAT ALL EXISTING UTILITIES ARE SHOWN OR THAT THE GIVEN LOCATIONS ARE EXACT. CONFIRMATION OF EXISTENCE AND EXACT LOCATION OF ALL SERVICES MUST BE OBTAINED FROM THE INDIVIDUAL UTILITIES BEFORE PROCEEDING WITH CONSTRUCTION. | NO. REVISIONS 0 ISSUED FOR CONSTRUCTION 10/04/17 | | DRAWN BY CLC HOR. SCALE 1:500 VERT. SCALE N/A | APPROVED BY [Signature] RELEASED FOR CONSTRUCTION [Signature] 4/10/17 | |

| | |
|--|---|
| THE CITY OF WINNIPEG WATER AND WASTE DEPARTMENT | SHEET 10 OF 82 CITY DRAWING NUMBER 11391 |
| 2016 SEWER RENEWALS BY CIPP LINING CONTRACT 3 BIBEAU BY (S LEG - N OF CL) 2ND MH W OF BIBEAU BY (E LEG) TO 3RD MH W OF BIBEAU BY (E LEG) | REV 0 |