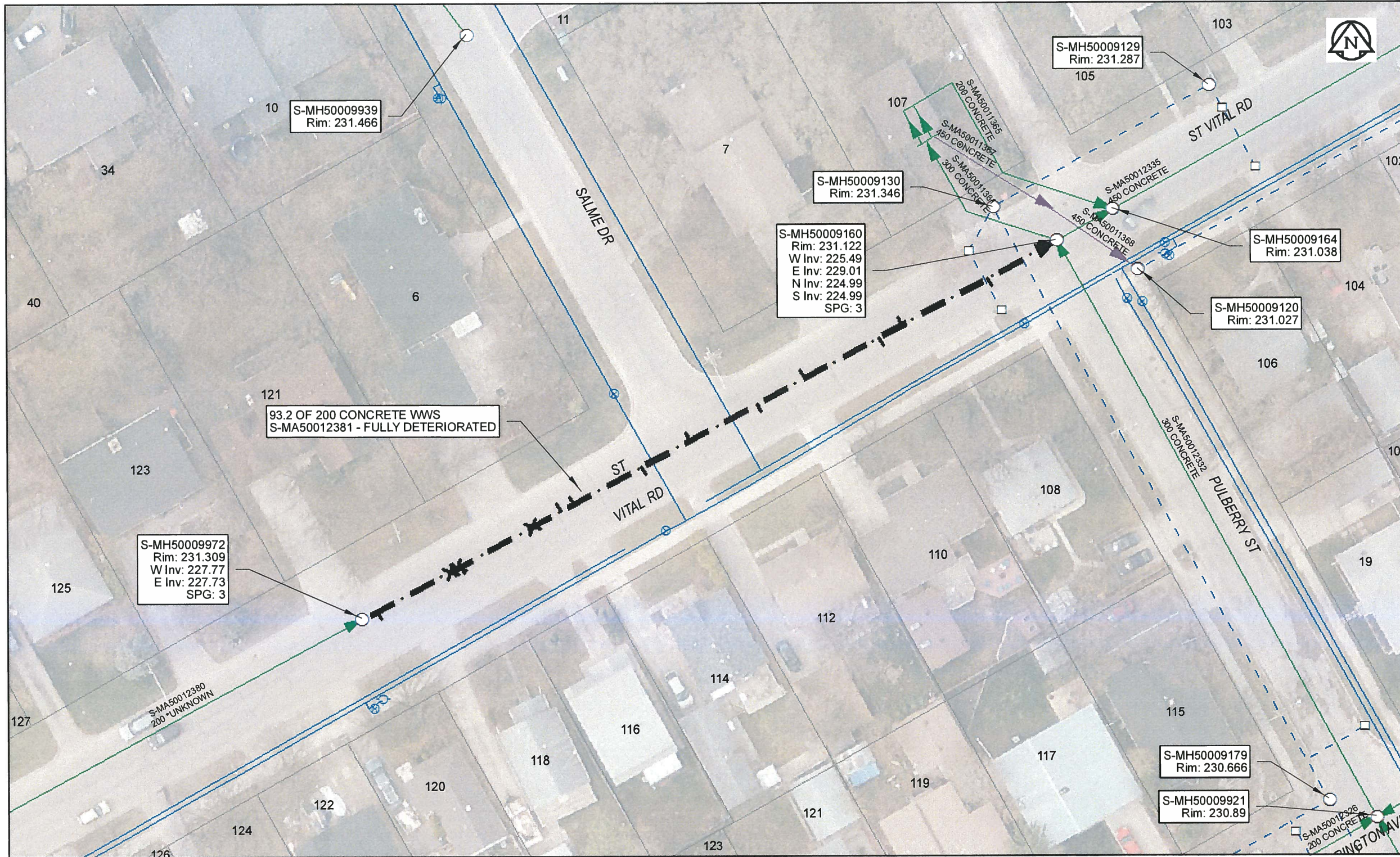


B SIZE 11" X 17" (279mm x 432mm)



Sewer Junction Information
(From Video Inspection)

Reference MH	Distance	Size	Clock
S-MH50009972	002.0	150	01
-	011.8	150	12
-	012.8	150	12
-	013.1	150	01
-	022.8	150	12
-	026.6	150	10
-	028.3	150	11
-	037.5	150	01
-	043.9	150	10
-	053.0	150	01
-	059.4	150	11
-	069.5	150	01
-	072.6	150	10
-	084.1	150	01

Traffic Controls
Regional Street Lane Closure Required: No
Impacted Regional Street: N/A

General Requirements:
Residential Street Restrictions

WARNING
IF POWER EQUIPMENT OR EXPLOSIVES ARE TO BE USED FOR EXCAVATION ON THIS PROJECT, THE CONTRACTOR MUST:
1) NOTIFY THE GAS COMPANY OF THE PROPOSED LOCATION OF EXCAVATION.
2) TAKE PRECAUTION TO AVOID DAMAGE TO GAS COMPANY INSTALLATIONS.
SEE PROVINCIAL REGULATION 140/92 FOR DETAILS

APEGM
Certificate of Authorization
AECOM Canada Ltd.
No. 4671 Date: April 10/17

METRIC
WHOLE NUMBERS INDICATE MILLIMETRES
DECIMALIZED NUMBERS INDICATE METRES
0 2.5 5 10 15 20
Meters
BID OPPORTUNITY NO. 261-2017

AECOM REVIEW DRFT CHK FILE NAME: 2016 Lining.pdf SAVED BY: JD	LOCATION APPROVED UNDERGROUND STRUCTURES		Can-Net GPS Reference Station WINN/810			PROFESSIONAL'S SEAL 		
	SUPR. U/G STRUCTURES	DATE					DESIGNED BY: NK	CHECKED BY: CM
	NOTE: LOCATION OF UNDERGROUND STRUCTURES AS SHOWN ARE BASED ON THE BEST INFORMATION AVAILABLE. BUT NO GUARANTEE IS GIVEN THAT ALL EXISTING UTILITIES ARE SHOWN OR THAT THE GIVEN LOCATIONS ARE EXACT. CONFIRMATION OF EXISTENCE AND EXACT LOCATION OF ALL SERVICES MUST BE OBTAINED FROM THE INDIVIDUAL UTILITIES BEFORE PROCEEDING WITH CONSTRUCTION.						DRAWN BY: CLC	APPROVED BY: <i>[Signature]</i>
	0	ISSUED FOR CONSTRUCTION	10/04/17	<i>[Signature]</i>			HOR. SCALE: 1:500	RELEASED FOR CONSTRUCTION: <i>[Signature]</i>
	NO.	REVISIONS	YY/MM/DD	BY			VERT. SCALE: N/A	DATE: 4/10/17

	THE CITY OF WINNIPEG WATER AND WASTE DEPARTMENT
2016 SEWER RENEWALS BY CIPP LINING CONTRACT 3 ST VITAL RD 1ST MH W OF PULBERRY ST - MH AT PULBERRY ST (CL)	
SHEET 13 OF 82 CITY DRAWING NUMBER 11394	REV 0