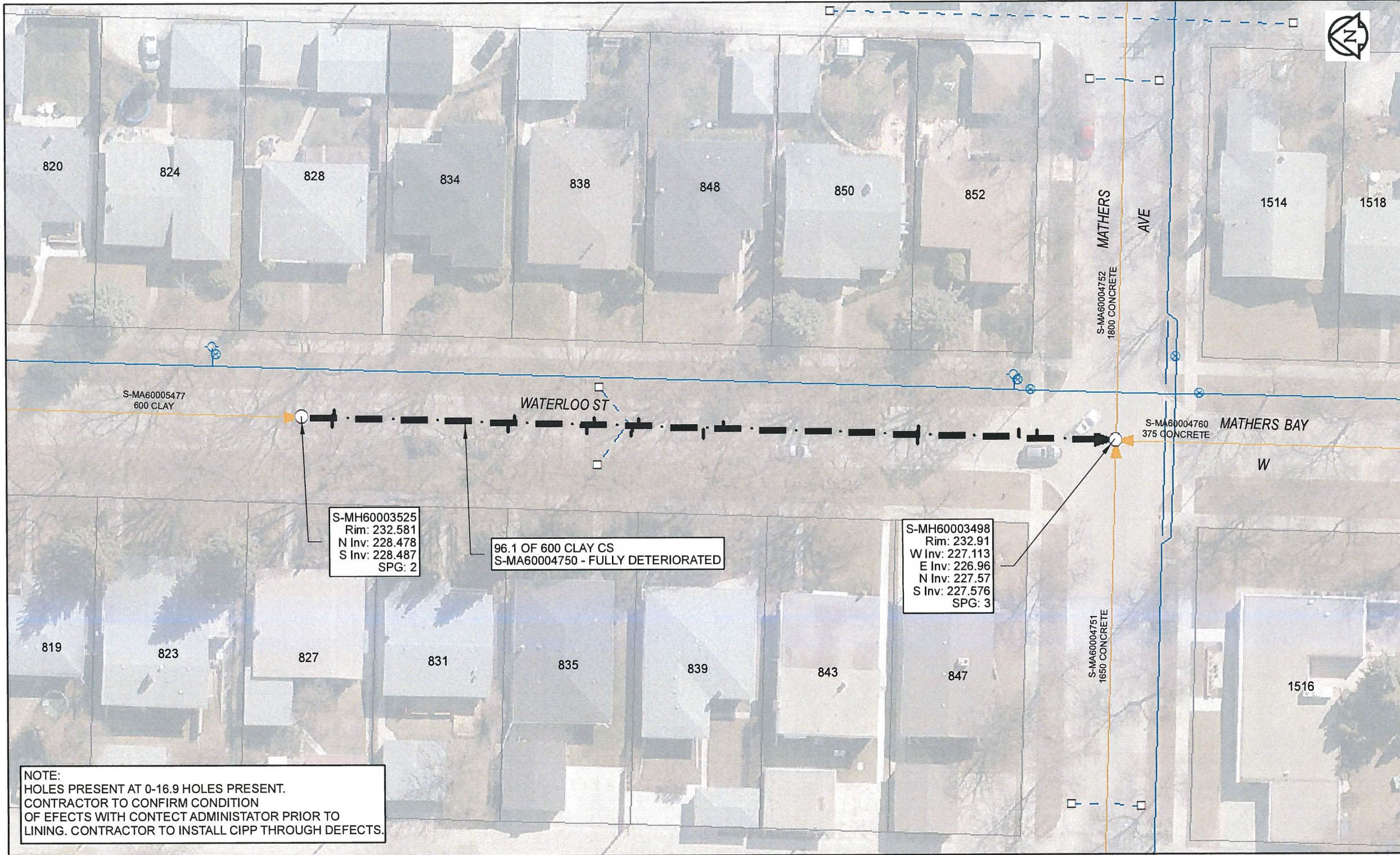


B SIZE 11" X 17" (279mm x 432mm)



Sewer Junction Information
(From Video Inspection)

Reference MH	Distance	Size	Clock
S-MH60003525	003.6	150	01
-	003.7	150	11
-	024.3	150	01
-	025.0	150	11
-	033.5	150	01
-	034.4	150	11
-	038.8	150	02
-	039.6	150	11
-	047.3	150	01
-	049.6	150	11
-	072.7	150	01
-	072.7	150	11
-	086.7	150	11
-	084.6	150	10

Traffic Controls
Regional Street Lane Closure Required: No
Impacted Regional Street: N/A

General Requirements:
Residential Street Restrictions

WARNING
IF POWER EQUIPMENT OR EXPLOSIVES ARE TO BE USED FOR EXCAVATION ON THIS PROJECT, THE CONTRACTOR MUST:
1) NOTIFY THE GAS COMPANY OF THE PROPOSED LOCATION OF EXCAVATION.
2) TAKE PRECAUTION TO AVOID DAMAGE TO GAS COMPANY INSTALLATIONS.
SEE PROVINCIAL REGULATION 140/92 FOR DETAILS

AECOM
Certificate of Authorization
AECOM Canada Ltd.
No. 4671 Date: *April 10/17*

METRIC
WHOLE NUMBERS INDICATE MILLIMETRES
DECIMALIZED NUMBERS INDICATE METRES
0 2.5 5 10 15 20
Meters
BID OPPORTUNITY NO. 261-2017

AECOM REVIEW DRFT CHK	LOCATION APPROVED UNDERGROUND STRUCTURES	Can-Net GPS Reference Station WINN/810		DESIGNED BY NK	CHECKED BY CM
	SUPR. U/G STRUCTURES COMMITTEE DATE NOTE: LOCATION OF UNDERGROUND STRUCTURES AS SHOWN ARE BASED ON THE BEST INFORMATION AVAILABLE. BUT NO GUARANTEE IS GIVEN THAT ALL EXISTING UTILITIES ARE SHOWN OR THAT THE GIVEN LOCATIONS ARE EXACT. CONFIRMATION OF EXISTENCE AND EXACT LOCATION OF ALL SERVICES MUST BE OBTAINED FROM THE INDIVIDUAL UTILITIES BEFORE PROCEEDING WITH CONSTRUCTION.	NO. REVISIONS 0 ISSUED FOR CONSTRUCTION 10/04/17 YY/MM/DD BY		DRAWN BY CLC HOR. SCALE 1: 500 VERT. SCALE N/A DATE	APPROVED BY <i>SC</i> RELEASED FOR CONSTRUCTION DATE <i>4/10/17</i>

PROFESSIONAL'S SEAL

 CONSULTANT DRAWING NO. 60516898-01-C-2016 Lining-R0X.mxd

THE CITY OF WINNIPEG
 WATER AND WASTE DEPARTMENT

2016 SEWER RENEWALS
 BY CIPP LINING
 CONTRACT 3
 WATERLOO ST
 3RD MH S OF GRANT AV TO MH AT MATHERS AV

SHEET 35 OF 82
 CITY DRAWING NUMBER 11416 REV 0