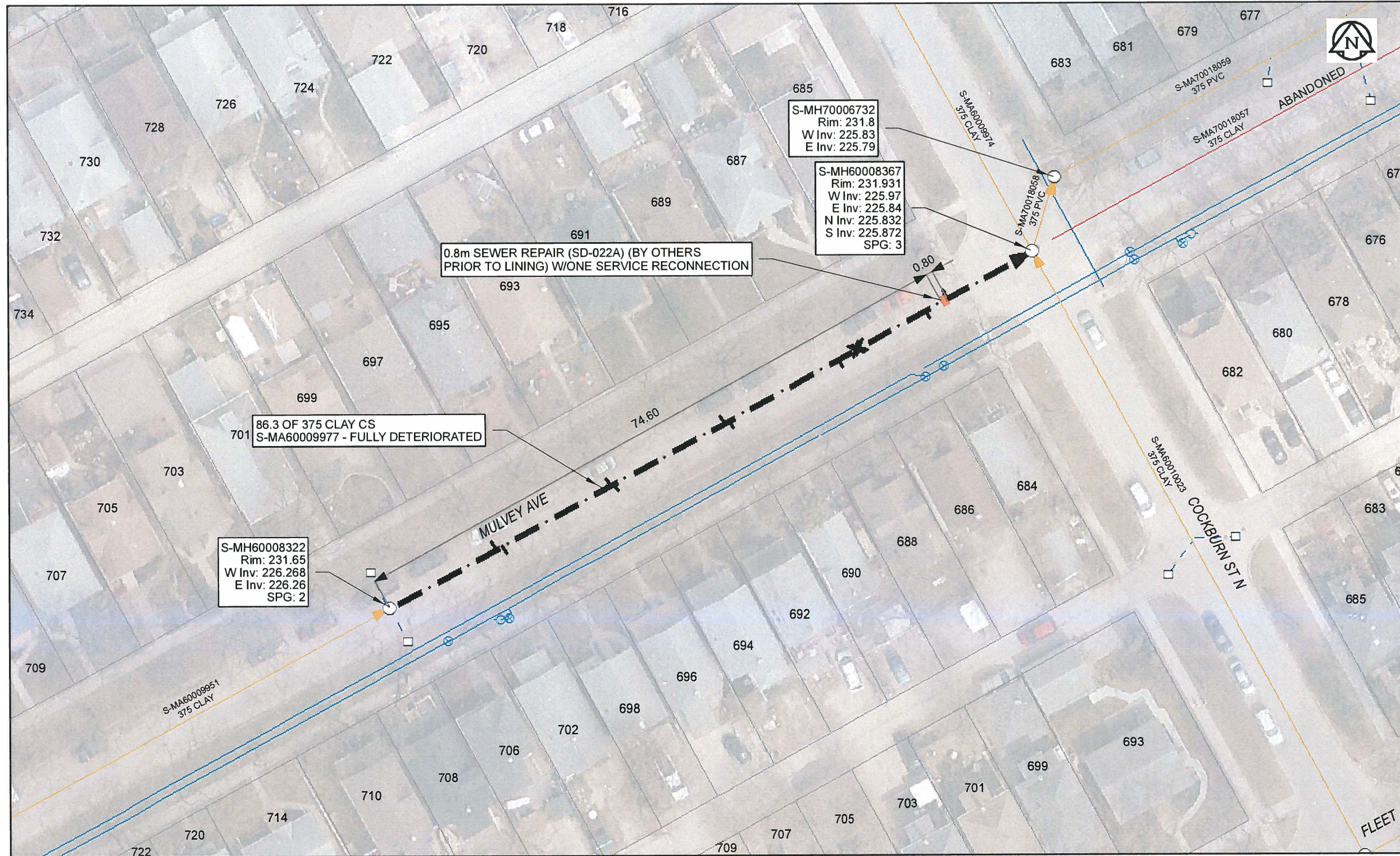


B SIZE 11" X 17" (279mm x 432mm)



Sewer Junction Information
(From Video Inspection)

Reference MH	Distance	Size	Clock
S-MH60008322	014.3	150	10
-	015.2	150	02
-	029.8	150	10
-	030.3	150	02
-	045.1	150	10
-	045.8	150	02
-	060.5	150	02
-	063.0	150	12
-	063.5	150	12
-	075.0	150	10
-	075.5	150	02

Traffic Controls
Regional Street Lane Closure Required: No
Impacted Regional Street: N/A

General Requirements:
Residential Street Restrictions

WARNING
IF POWER EQUIPMENT OR EXPLOSIVES ARE TO BE USED FOR EXCAVATION ON THIS PROJECT, THE CONTRACTOR MUST:
1) NOTIFY THE GAS COMPANY OF THE PROPOSED LOCATION OF EXCAVATION.
2) TAKE PRECAUTION TO AVOID DAMAGE TO GAS COMPANY INSTALLATIONS.
SEE PROVINCIAL REGULATION 140/92 FOR DETAILS

AECOM
Certificate of Authorization
AECOM Canada Ltd.
No. 4671 Date: *April 10/17*

METRIC
WHOLE NUMBERS INDICATE MILLIMETRES
DECIMALIZED NUMBERS INDICATE METRES
0 2.5 5 10 15 20
Meters
BID OPPORTUNITY NO. 261-2017

AECOM REVIEW DRFT CHK	LOCATION APPROVED UNDERGROUND STRUCTURES		Can-Net GPS Reference Station WINN/810		AECOM	DESIGNED BY NK CHECKED BY CM		PROFESSIONAL'S SEAL BRAUN Member 24453 REGISTERED ENGINEER	CONSULTANT DRAWING NO. 60516898-01-C-2016 Lining-R0X.mxd
	SUPR. U/G STRUCTURES DATE COMMITTEE					DRAWN BY CLC APPROVED BY <i>[Signature]</i>			
NOTE: LOCATION OF UNDERGROUND STRUCTURES AS SHOWN ARE BASED ON THE BEST INFORMATION AVAILABLE. BUT NO GUARANTEE IS GIVEN THAT ALL EXISTING UTILITIES ARE SHOWN OR THAT THE GIVEN LOCATIONS ARE EXACT. CONFIRMATION OF EXISTENCE AND EXACT LOCATION OF ALL SERVICES MUST BE OBTAINED FROM THE INDIVIDUAL UTILITIES BEFORE PROCEEDING WITH CONSTRUCTION.		0 ISSUED FOR CONSTRUCTION 10/04/17		HOR. SCALE 1:500		VERT. SCALE N/A		RELEASED FOR CONSTRUCTION <i>[Signature]</i> 4/10/17	
		NO. REVISIONS YY/MM/DD BY		DATE		DATE			

THE CITY OF WINNIPEG
WATER AND WASTE DEPARTMENT

2016 SEWER RENEWALS BY CIPP LINING CONTRACT 3
MULVEY AV
1ST MH WEST OF COCKBURN ST N TO MH AT COCKBURN ST N

SHEET 50 OF 82
CITY DRAWING NUMBER
REV 11431 0