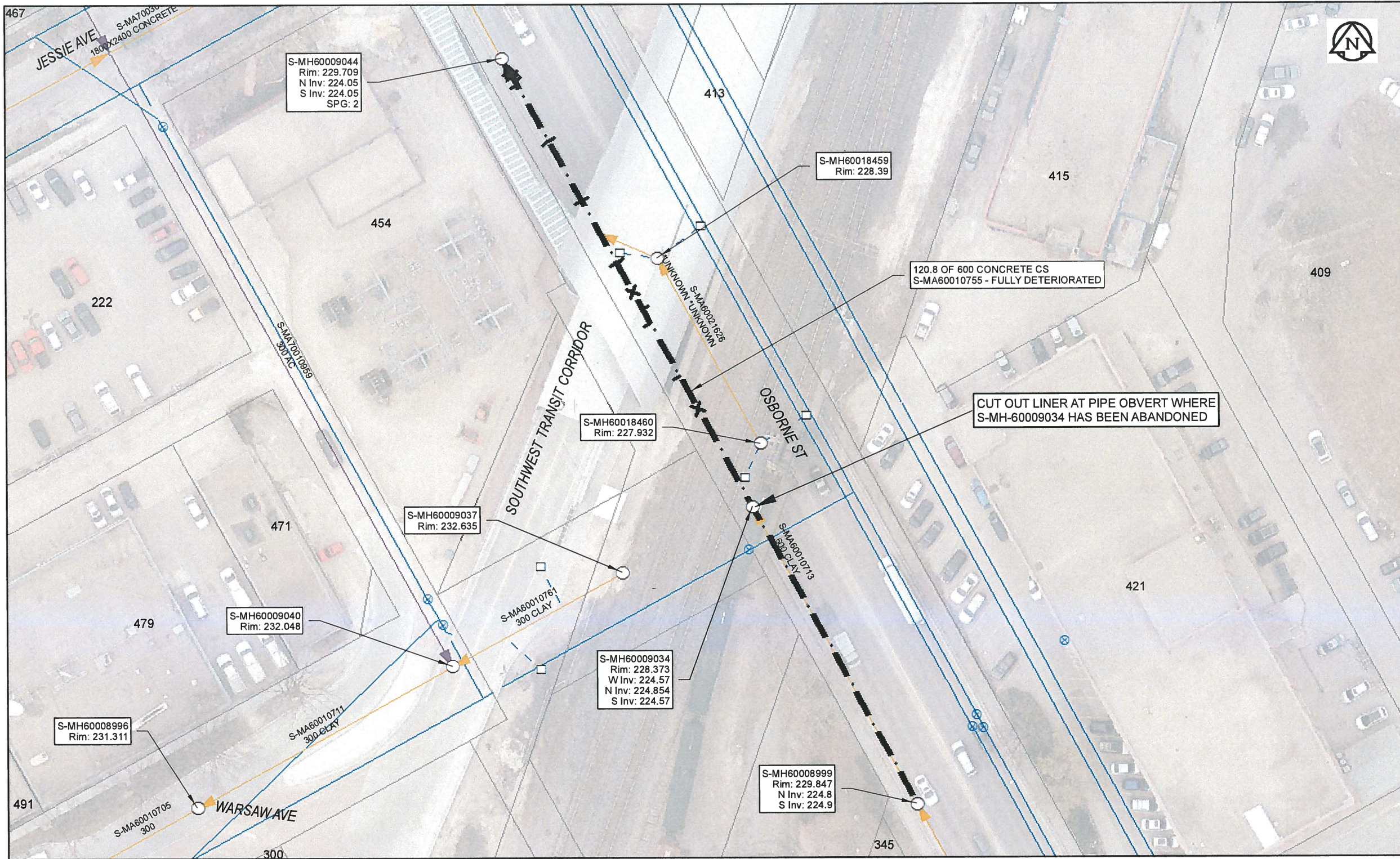


B SIZE 11" X 17" (279mm x 432mm)



**Sewer Junction Information**  
(From Video Inspection)

Reference MH	Distance	Size	Clock
S-MH60009044	002.0	150	01
-	002.4	150	11
-	003.6	150	11
-	004.2	150	01
-	013.3	150	01
-	013.3	150	11
-	023.0	150	01
-	023.0	150	11
-	033.0	150	11
-	033.0	150	01
-	037.8	150	12
-	040.5	300	10
-	042.8	150	01
-	051.4	150	01
-	056.6	150	12

**Traffic Controls**  
Regional Street Lane Closure Required: Yes  
Impacted Regional Street: Osborne St

**General Requirements:**  
Maintain three lanes of traffic total on Osborne St (two NB during AM Weekday Peak Period, and two SB during PM Weekday Peak Period). Coordinate traffic control with City of Winnipeg Traffic Services.

**WARNING**  
IF POWER EQUIPMENT OR EXPLOSIVES ARE TO BE USED FOR EXCAVATION ON THIS PROJECT, THE CONTRACTOR MUST:  
1) NOTIFY THE GAS COMPANY OF THE PROPOSED LOCATION OF EXCAVATION.  
2) TAKE PRECAUTION TO AVOID DAMAGE TO GAS COMPANY INSTALLATIONS.  
SEE PROVINCIAL REGULATION 140/92 FOR DETAILS

**APEGM**  
Certificate of Authorization  
AECOM Canada Ltd.  
No. 4671 Date: April 10, 17

**METRIC**  
WHOLE NUMBERS INDICATE MILLIMETRES  
DECIMALIZED NUMBERS INDICATE METRES  
0 2.5 5 10 15 20  
Meters  
BID OPPORTUNITY NO. 261-2017

AECOM REVIEW DRFT CHK	LOCATION APPROVED UNDERGROUND STRUCTURES	Can-Net GPS Reference Station WINN/810		DESIGNED BY NK	CHECKED BY CM	
	SUPR. U/G STRUCTURES DATE COMMITTEE NOTE: LOCATION OF UNDERGROUND STRUCTURES AS SHOWN ARE BASED ON THE BEST INFORMATION AVAILABLE. BUT NO GUARANTEE IS GIVEN THAT ALL EXISTING UTILITIES ARE SHOWN OR THAT THE GIVEN LOCATIONS ARE EXACT. CONFIRMATION OF EXISTENCE AND EXACT LOCATION OF ALL SERVICES MUST BE OBTAINED FROM THE INDIVIDUAL UTILITIES BEFORE PROCEEDING WITH CONSTRUCTION.	NO. REVISIONS 0 ISSUED FOR CONSTRUCTION 10/04/17 YY/MM/DD BY		DRAWN BY CLC HOR. SCALE 1:600 VERT. SCALE N/A	APPROVED BY [Signature] RELEASED FOR CONSTRUCTION DATE 4/10/17	

<b>THE CITY OF WINNIPEG</b> <b>WATER AND WASTE DEPARTMENT</b>	<b>2016 SEWER RENEWALS</b> <b>BY CIPP LINING</b> <b>CONTRACT 3</b> <b>OSBORNE ST</b> 2ND MH N OF MULVEY AV (W OF CL) TO 1ST MH S OF JESSIE (W OF CL)	SHEET 52 OF 82 CITY DRAWING NUMBER <b>11433</b> REV 0
--	--	---