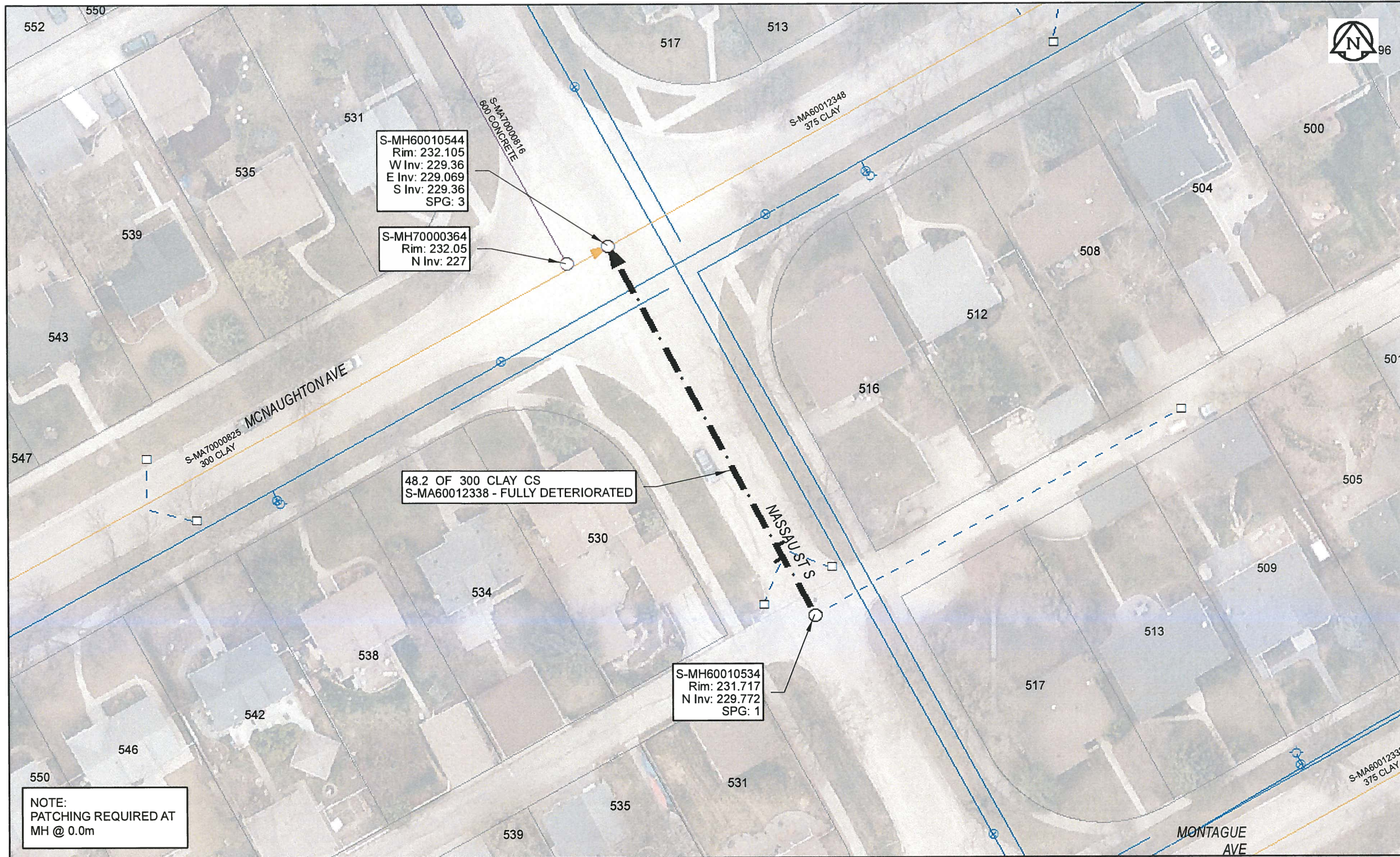


B SIZE 11" X 17" (279mm x 432mm)



NOTE:
PATCHING REQUIRED AT
MH @ 0.0m

Sewer Junction Information
(From Video Inspection)

Reference MH	Distance	Size	Clock
S-MH60010534	007.8	150	10
-	009.3	150	02

Traffic Controls
Regional Street Lane Closure Required: No
Impacted Regional Street: N/A

General Requirements:
Residential Street Restrictions

WARNING
IF POWER EQUIPMENT OR EXPLOSIVES ARE TO BE USED FOR EXCAVATION ON THIS PROJECT, THE CONTRACTOR MUST:
1) NOTIFY THE GAS COMPANY OF THE PROPOSED LOCATION OF EXCAVATION.
2) TAKE PRECAUTION TO AVOID DAMAGE TO GAS COMPANY INSTALLATIONS.
SEE PROVINCIAL REGULATION 140/92 FOR DETAILS

APEGM
Certificate of Authorization
AECOM Canada Ltd.
No. 4671 Date: *April 10/17*

METRIC
WHOLE NUMBERS INDICATE MILLIMETRES
DECIMALIZED NUMBERS INDICATE METRES
0 2.5 5 10 15 20
Meters
BID OPPORTUNITY NO. 261-2017

AECOM REVIEW DRFT CHK FILE NAME: 2016 Lining.pdf SAVED BY: JD	LOCATION APPROVED UNDERGROUND STRUCTURES		Can-Net GPS Reference Station WINN/810		AECOM	DESIGNED BY NK CHECKED BY CM		
	SUPR. U/G STRUCTURES DATE COMMITTEE NOTE: LOCATION OF UNDERGROUND STRUCTURES AS SHOWN ARE BASED ON THE BEST INFORMATION AVAILABLE. BUT NO GUARANTEE IS GIVEN THAT ALL EXISTING UTILITIES ARE SHOWN OR THAT THE GIVEN LOCATIONS ARE EXACT. CONFIRMATION OF EXISTENCE AND EXACT LOCATION OF ALL SERVICES MUST BE OBTAINED FROM THE INDIVIDUAL UTILITIES BEFORE PROCEEDING WITH CONSTRUCTION.					DRAWN BY CLC APPROVED BY <i>SC</i>		
NO. REVISIONS		YY/MM/DD	BY	DATE	HOR. SCALE 1:500 VERT. SCALE N/A		RELEASED FOR CONSTRUCTION <i>AS</i> DATE <i>4/10/17</i>	
0 ISSUED FOR CONSTRUCTION		10/04/17	<i>JD</i>					

THE CITY OF WINNIPEG
WATER AND WASTE DEPARTMENT

2016 SEWER RENEWALS BY CIPP LINING CONTRACT 3 NASSAU ST S
1ST MH S OF MCNAUGHTON AV TO MH AT MCNAUGHTON AV

SHEET **57** OF 82
CITY DRAWING NUMBER **11438** REV 0