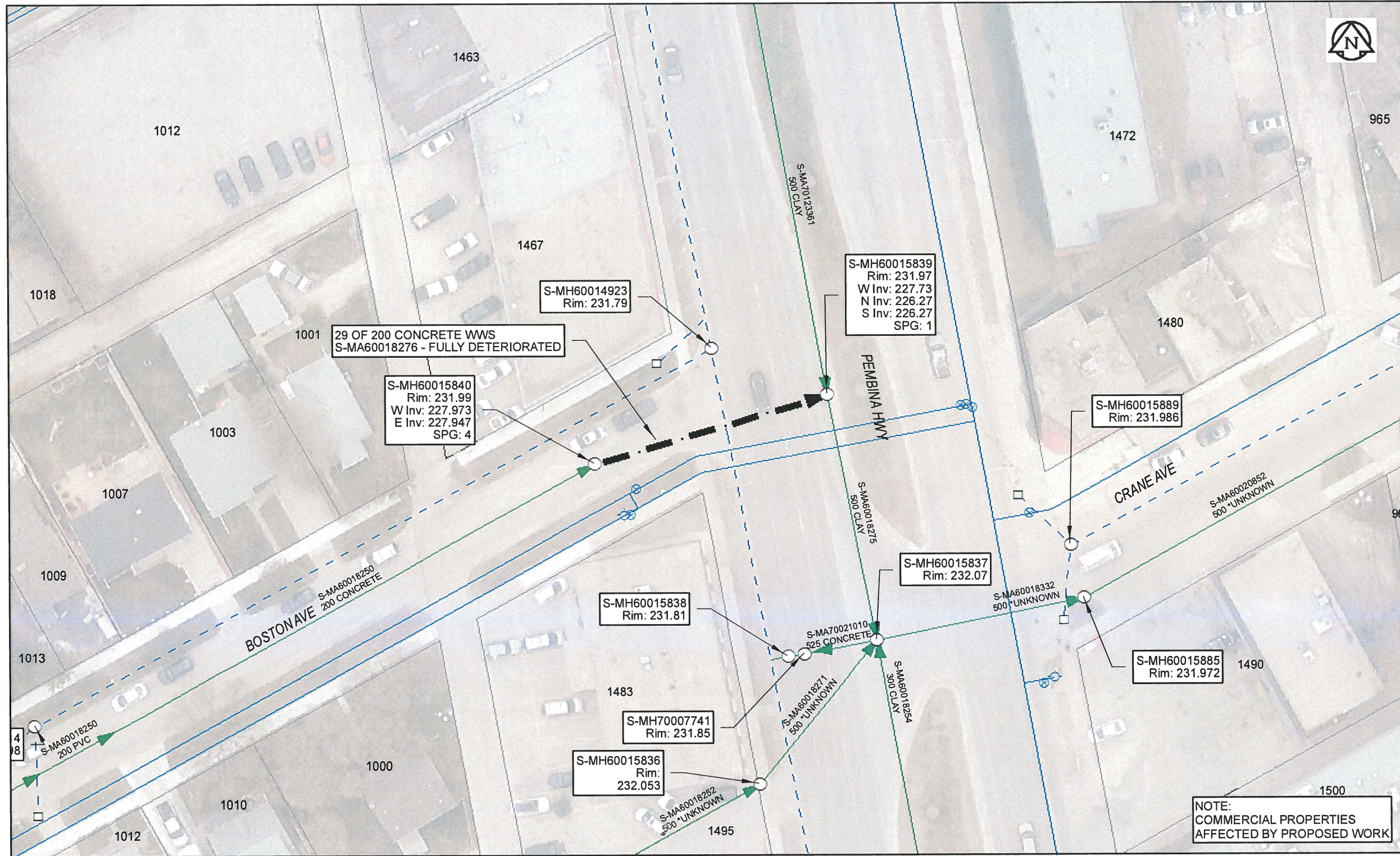


B SIZE 11" X 17" (279mm x 432mm)



Sewer Junction Information
(From Video Inspection)
Reference MH Distance Size Clock

Traffic Controls
Regional Street Lane Closure Required: Yes
Impacted Regional Street: Pembina Hw

General Requirements:
Maintain minimum two lanes of traffic on SB Pembina Hwy. Maintain through traffic on Boston Ave.

WARNING
IF POWER EQUIPMENT OR EXPLOSIVES ARE TO BE USED FOR EXCAVATION ON THIS PROJECT, THE CONTRACTOR MUST:
1) NOTIFY THE GAS COMPANY OF THE PROPOSED LOCATION OF EXCAVATION.
2) TAKE PRECAUTION TO AVOID DAMAGE TO GAS COMPANY INSTALLATIONS.
SEE PROVINCIAL REGULATION 140/92 FOR DETAILS

APEGM
Certificate of Authorization
AECOM Canada Ltd.
No. 4671 Date: April 10, 2017

METRIC
WHOLE NUMBERS INDICATE MILLIMETRES
DECIMALIZED NUMBERS INDICATE METRES
0 2.5 5 10 15 20
Meters
BID OPPORTUNITY NO. 261-2017

LOCATION APPROVED UNDERGROUND STRUCTURES

SUPR. U/G STRUCTURES DATE COMMITTEE
NOTE:
LOCATION OF UNDERGROUND STRUCTURES AS SHOWN ARE BASED ON THE BEST INFORMATION AVAILABLE. BUT NO GUARANTEE IS GIVEN THAT ALL EXISTING UTILITIES ARE SHOWN OR THAT THE GIVEN LOCATIONS ARE EXACT. CONFIRMATION OF EXISTENCE AND EXACT LOCATION OF ALL SERVICES MUST BE OBTAINED FROM THE INDIVIDUAL UTILITIES BEFORE PROCEEDING WITH CONSTRUCTION.

Can-Net GPS Reference Station WINN/810			
NO.	REVISIONS	YY/MM/DD	BY
0	ISSUED FOR CONSTRUCTION	10/04/17	[Signature]



DESIGNED BY	NK	CHECKED BY	CM
DRAWN BY	CLC	APPROVED BY	[Signature]
HOR. SCALE	1:500	RELEASED FOR CONSTRUCTION	[Signature]
VERT. SCALE	N/A	DATE	5/9/10/17
DATE			

PROFESSIONAL'S SEAL



CONSULTANT DRAWING NO.
60516898-01-C-2016 Lining-R0X.mxd



THE CITY OF WINNIPEG WATER AND WASTE DEPARTMENT

2016 SEWER RENEWALS BY CIPP LINING CONTRACT 3 BOSTON AV
1ST MH W OF PEMBINA HW TO MH AT PEMBINA HW

SHEET 63 OF 82
CITY DRAWING NUMBER
11444 REV 0

AECOM REVIEW DRFT CHK
FILE NAME: 2016 Lining.pdf SAVED BY: JD