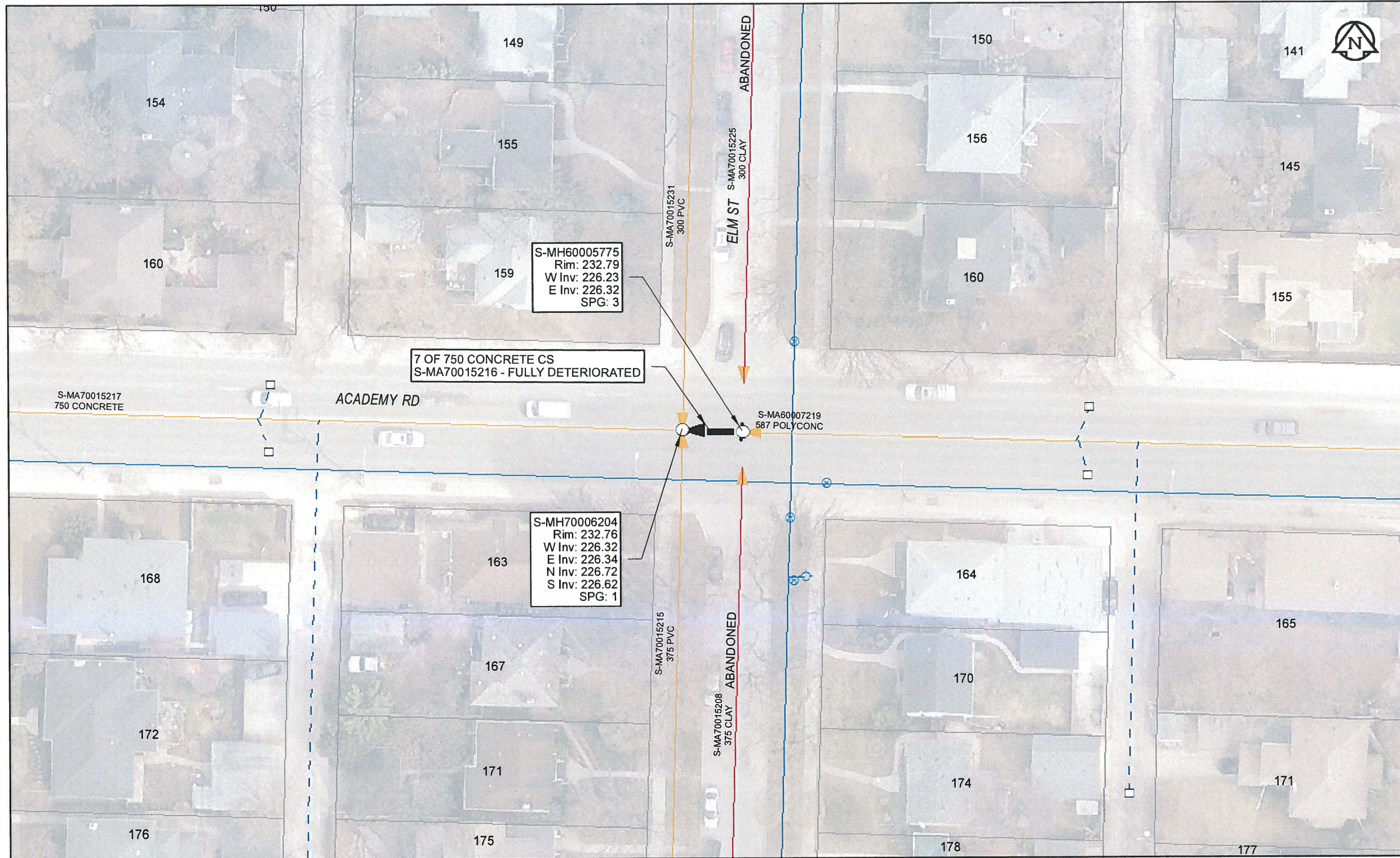


B SIZE 11" X 17" (279mm x 432mm)



Sewer Junction Information

(From Video Inspection)

Reference MH	Distance	Size	Clock
S-MH70006204	006.8	450	02
-	006.9	450	09

Traffic Controls

Regional Street Lane Closure Required: Yes
 Impacted Regional Street: Academy Rd

General Requirements:
 Maintain minimum one lane of traffic in each direction on regional street.

WARNING

IF POWER EQUIPMENT OR EXPLOSIVES ARE TO BE USED FOR EXCAVATION ON THIS PROJECT, THE CONTRACTOR MUST:
 1) NOTIFY THE GAS COMPANY OF THE PROPOSED LOCATION OF EXCAVATION.
 2) TAKE PRECAUTION TO AVOID DAMAGE TO GAS COMPANY INSTALLATIONS.
 SEE PROVINCIAL REGULATION 140/92 FOR DETAILS



Certificate of Authorization

AECOM Canada Ltd.

No. 4671 Date: *Apr 11/17*

METRIC

WHOLE NUMBERS INDICATE MILLIMETRES
 DECIMALIZED NUMBERS INDICATE METRES

0 2.5 5 10 15 20

Meters

BID OPPORTUNITY NO. 261-2017

LOCATION APPROVED UNDERGROUND STRUCTURES

SUPR. U/G STRUCTURES DATE COMMITTEE

NOTE:
 LOCATION OF UNDERGROUND STRUCTURES AS SHOWN ARE BASED ON THE BEST INFORMATION AVAILABLE. BUT NO GUARANTEE IS GIVEN THAT ALL EXISTING UTILITIES ARE SHOWN OR THAT THE GIVEN LOCATIONS ARE EXACT. CONFIRMATION OF EXISTENCE AND EXACT LOCATION OF ALL SERVICES MUST BE OBTAINED FROM THE INDIVIDUAL UTILITIES BEFORE PROCEEDING WITH CONSTRUCTION.

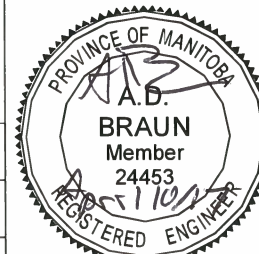
Can-Net GPS Reference Station WINN/810

NO.	REVISIONS	YY/MM/DD	BY
0	ISSUED FOR CONSTRUCTION	10/04/17	<i>[Signature]</i>



DESIGNED BY	NK	CHECKED BY	CM
DRAWN BY	CLC	APPROVED BY	<i>[Signature]</i>
HOR. SCALE	1:500	RELEASED FOR CONSTRUCTION	<i>[Signature]</i>
VERT. SCALE	N/A	DATE	<i>4/11/17</i>
DATE			

PROFESSIONAL'S SEAL



CONSULTANT DRAWING NO.
 60516898-01-C-2016 Lining-R0X.mxd



THE CITY OF WINNIPEG WATER AND WASTE DEPARTMENT

2016 SEWER RENEWALS BY CIPP LINING CONTRACT 3 ACADEMY RD
 MH AT ELM ST (CL) TO MH AT ELM ST (W OF CL)

SHEET 77 OF 82

CITY DRAWING NUMBER

REV
11458 0

AECOM REVIEW DRFT CHK
 FILE NAME: 2016 Lining.pdf SAVED BY: JD