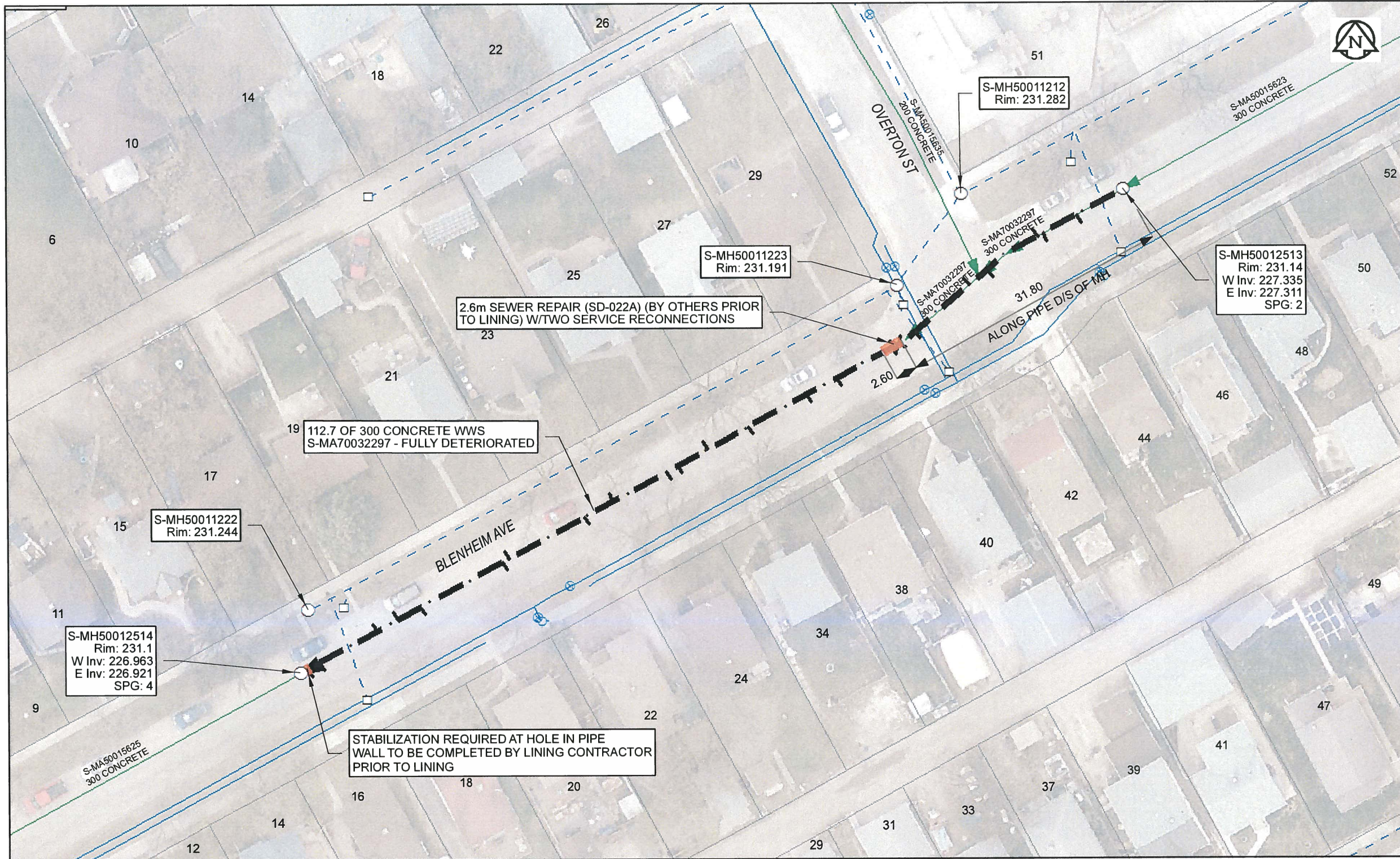


B SIZE 11" X 17" (279mm x 432mm)



**Sewer Junction Information**  
(From Video Inspection)

Reference MH	Distance	Size	Clock
S-MH50012513	006.2	150	10
-	010.8	250	10
-	011.5	250	02
-	018.7	150	11
-	021.4	150	02
-	029.8	150	10
-	032.3	250	12
-	033.1	150	11
-	040.7	150	10
-	044.7	150	10
-	052.5	150	11
-	058.0	150	01
-	062.0	150	10
-	063.5	150	11
-	070.7	150	02
-	074.5	150	10
-	084.7	150	01
-	085.5	150	10
-	096.5	150	11
-	099.6	150	01
-	102.3	150	01
-	110.0	150	10
-	111.6	150	11

**Traffic Controls**  
Regional Street Lane Closure Required: No  
Impacted Regional Street: N/A

General Requirements:  
Residential Street Restrictions

**WARNING**  
IF POWER EQUIPMENT OR EXPLOSIVES ARE TO BE USED FOR EXCAVATION ON THIS PROJECT, THE CONTRACTOR MUST:  
1) NOTIFY THE GAS COMPANY OF THE PROPOSED LOCATION OF EXCAVATION.  
2) TAKE PRECAUTION TO AVOID DAMAGE TO GAS COMPANY INSTALLATIONS.  
SEE PROVINCIAL REGULATION 140/92 FOR DETAILS

**APEGM**  
Certificate of Authorization  
AECOM Canada Ltd.  
No. 4671 Date: *Apr 10/17*

**METRIC**  
WHOLE NUMBERS INDICATE MILLIMETRES  
DECIMALIZED NUMBERS INDICATE METRES  
0 2.5 5 10 15 20  
Meters  
BID OPPORTUNITY NO. 261-2017

AECOM REVIEW DRFT CHK  
FILE NAME: 2016 Lining.pdf SAVED BY: JD

**LOCATION APPROVED**  
UNDERGROUND STRUCTURES

SUPR. U/G STRUCTURES DATE COMMITTEE  
**NOTE:**  
LOCATION OF UNDERGROUND STRUCTURES AS SHOWN ARE BASED ON THE BEST INFORMATION AVAILABLE. BUT NO GUARANTEE IS GIVEN THAT ALL EXISTING UTILITIES ARE SHOWN OR THAT THE GIVEN LOCATIONS ARE EXACT. CONFIRMATION OF EXISTENCE AND EXACT LOCATION OF ALL SERVICES MUST BE OBTAINED FROM THE INDIVIDUAL UTILITIES BEFORE PROCEEDING WITH CONSTRUCTION.

Can-Net GPS Reference Station WINN/810			
NO.	REVISIONS	YY/MM/DD	BY
0	ISSUED FOR CONSTRUCTION	10/04/17	<i>JD</i>

**AECOM**

DESIGNED BY	NK	CHECKED BY	CM
DRAWN BY	CLC	APPROVED BY	<i>SC</i>
HOR. SCALE	1:500	RELEASED FOR CONSTRUCTION	<i>4/10/17 JD</i>
VERT. SCALE	N/A	DATE	

PROFESSIONAL'S SEAL  
PROVINCE OF MANITOBA  
A.D.  
BRAUN  
Member  
24453  
REGISTERED ENGINEER  
CONSULTANT DRAWING NO.  
60516898-01-C-2016 Lining-R0X.mxd

**THE CITY OF WINNIPEG**  
WATER AND WASTE DEPARTMENT

2016 SEWER RENEWALS  
BY CIPP LINING  
CONTRACT 3  
BLENHEIM AV  
1ST MH E OF OVERTON ST - 1ST MH E OF ST ANNES

SHEET 79 OF 82  
CITY DRAWING NUMBER  
REV  
**11460** 0