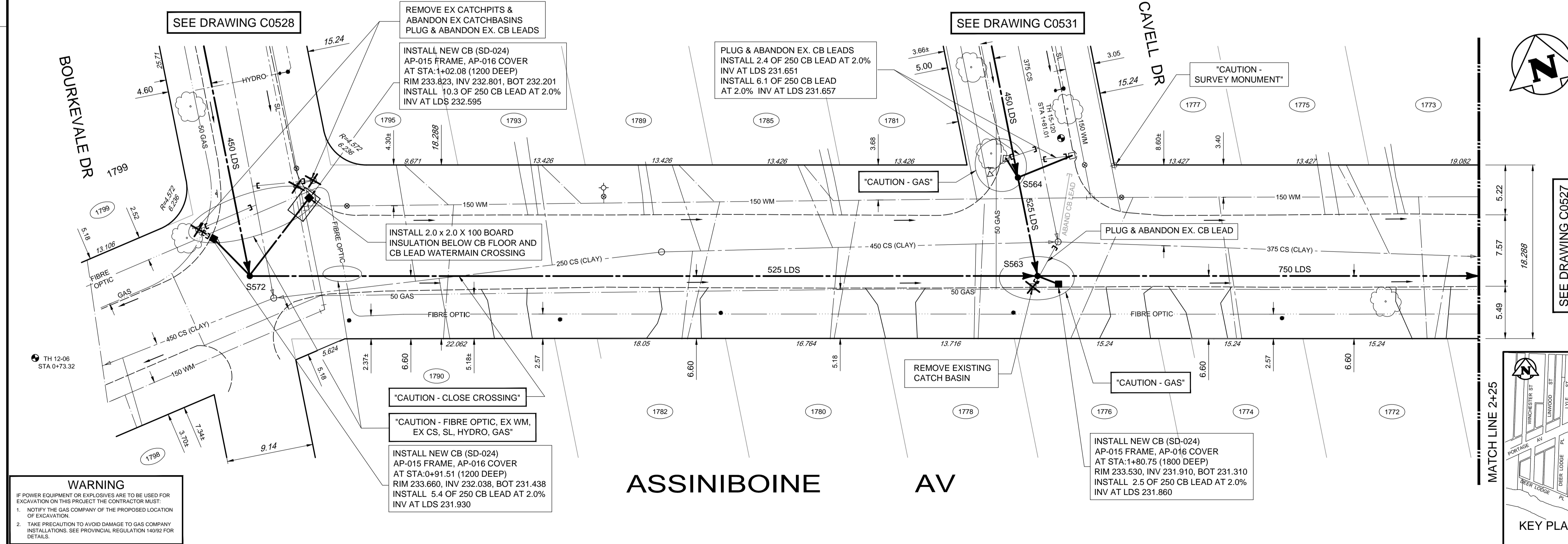


| SEWER CONNECTION DATA              |             |  |          |
|------------------------------------|-------------|--|----------|
| ADDRESS                            | SIZE & TYPE | SEWER CONNECTION LOCATION              | COMMENTS |
| 1772 ASSINIBOINE AVE (RESIDENTIAL) | UNKNOWN     | 41.2m E MH AT CAVELL                   |          |
| 1773 ASSINIBOINE AVE (RESIDENTIAL) | UNKNOWN     | SEWER JCT MEAS - 35.1m W MH WINSTON    |          |
| 1774 ASSINIBOINE AVE (RESIDENTIAL) | 150         | 17.9m E MH AT CAVELL                   |          |
| 1775 ASSINIBOINE AVE (RESIDENTIAL) | 150         | 34.9m E MH AT CAVELL                   |          |
| 1776 ASSINIBOINE AVE (RESIDENTIAL) | UNKNOWN     | UNKNOWN                                |          |
| 1777 ASSINIBOINE AVE (RESIDENTIAL) | UNKNOWN     | 79.9m S 1ST MH CAVELL N OF ASSINIBOINE |          |
| 1778 ASSINIBOINE AVE (RESIDENTIAL) | UNKNOWN     | 33.1m E 1ST MH W CAVELL                |          |
| 1780 ASSINIBOINE AVE (RESIDENTIAL) | UNKNOWN     | 18.6m E 1ST MH W CAVELL                |          |
| 1781 ASSINIBOINE AVE (RESIDENTIAL) | UNKNOWN     | 74.6m S 1ST MH CAVELL N OF ASSINIBOINE |          |
| 1782 ASSINIBOINE AVE (RESIDENTIAL) | UNKNOWN     | 3.9m E 1ST MH W CAVELL                 |          |
| 1785 ASSINIBOINE AVE (RESIDENTIAL) | UNKNOWN     | 18m E 1ST MH W CAVELL                  |          |
| 1789 ASSINIBOINE AVE (RESIDENTIAL) | 150         | 4.1m E 1ST MH W CAVELL                 |          |
| 1790 ASSINIBOINE AVE (RESIDENTIAL) | UNKNOWN     | 23.6m W 1ST MH E BOURKEVALE            |          |
| 1793 ASSINIBOINE AVE (RESIDENTIAL) | UNKNOWN     | 11.6m W 1ST MH E BOURKEVALE            |          |
| 1795 ASSINIBOINE AVE (RESIDENTIAL) | UNKNOWN     | 26.1m W 1ST MH E BOURKEVALE            |          |
| 1798 ASSINIBOINE AVE (RESIDENTIAL) | UNKNOWN     | 64.3m E MH ASSIN & RIVEROAKS           |          |
| 1799 ASSINIBOINE AVE (RESIDENTIAL) | UNKNOWN     | 59.4 m MH AT RIVEROAKS                 |          |

- CONSTRUCTION NOTES:**
- LOCATION OF ALL SEWER AND WATER LINES TO BE CONFIRMED IN THE FIELD.
  - SEWER AND WATER SERVICES SHOWN ON DRAWINGS ARE APPROXIMATE ONLY.
  - INSTALL NEW SEWER AND CATCHBASIN LEADS BY TRENCHLESS METHODS, UNLESS NOTED OTHERWISE.
  - INSTALL TYPE 'B' RISERS ON CATCHBASIN LEADS AS REQUIRED.

- GENERAL NOTES:**
- CHAINAGE IS ALONG SOUTH LIMIT OF ASSINIBOINE AVE.
  - STATION 1+00 = SE CORNER OF ASSINIBOINE AVE AND BOURKEVALE DRIVE.
  - SEE SPECIFICATIONS FOR DETAILED TEST HOLE INFORMATION.



**WARNING**

IF POWER EQUIPMENT OR EXPLOSIVES ARE TO BE USED FOR EXCAVATION ON THIS PROJECT THE CONTRACTOR MUST:

- NOTIFY THE GAS COMPANY OF THE PROPOSED LOCATION OF EXCAVATION.
- TAKE PRECAUTION TO AVOID DAMAGE TO GAS COMPANY INSTALLATIONS. SEE PROVINCIAL REGULATION 149/92 FOR DETAILS.

| EXISTING | LEGEND-PLAN         | PROPOSED | EXISTING           | LEGEND-PLAN     | PROPOSED                                 | EXISTING                     | LEGEND-PLAN | PROPOSED |
|----------|---------------------|----------|--------------------|-----------------|--|------------------------------|-------------|----------|
| 150 WM   | WATERMAIN           | 150 WM   | TEE                | ANCHOR          | LOCATION APPROVED UNDERGROUND STRUCTURES | B.M. CITY OF WINNIPEG 38-069 |             |          |
| 400 FM   | FEEDERMAIN          | 400 FM   | CURB STOP          | TREE            |  | ELEV. 233.792m               |             |          |
| 300 LDS  | LAND DRAINAGE SEWER | 300 LDS  | PLUG               | LEGAL DIMENSION |  |                              |             |          |
| 250 WWS  | WASTEWATER SEWER    | 250 WWS  | MANHOLE            | SURVEY BAR      |  |                              |             |          |
| 300 CS   | COMBINED SEWER      | 300 CS   | CATCHBASIN MANHOLE | TRAFFIC SIGNAL  |  |                              |             |          |
| 200 FCM  | FORCEMAIN           | 200 FCM  | CATCHBASIN         | GAS             |  |                              |             |          |
|          | JUNCTIONS           |          | CURB INLET         | HYDRO           |  |                              |             |          |
|          | HYDRANT             |          | HYDRO POLE         | MTS             |  |                              |             |          |
|          | VALVE               |          | LIGHT STANDARD     | CURB            |  |                              |             |          |
|          | BEND                |          |                    |                 |  |                              |             |          |

| NO. | REVISIONS         | DATE       | BY  |
|-----|-------------------|------------|-----|
| 00  | ISSUED FOR TENDER | 2017.03.28 | KJM |

**TETRA TECH**

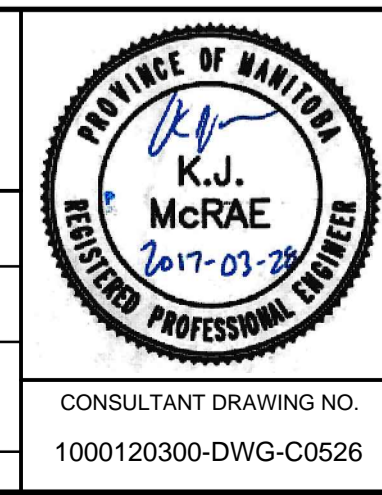
DESIGNED BY: KJM  
CHECKED BY: KJM

DRAWN BY: NL  
APPROVED BY: GS

HOR. SCALE: 1 : 250  
VERTICAL: 1 : 50

RELEASED FOR CONSTRUCTION

CONSULTANT DRAWING NO. 1000120300-DWG-C0526

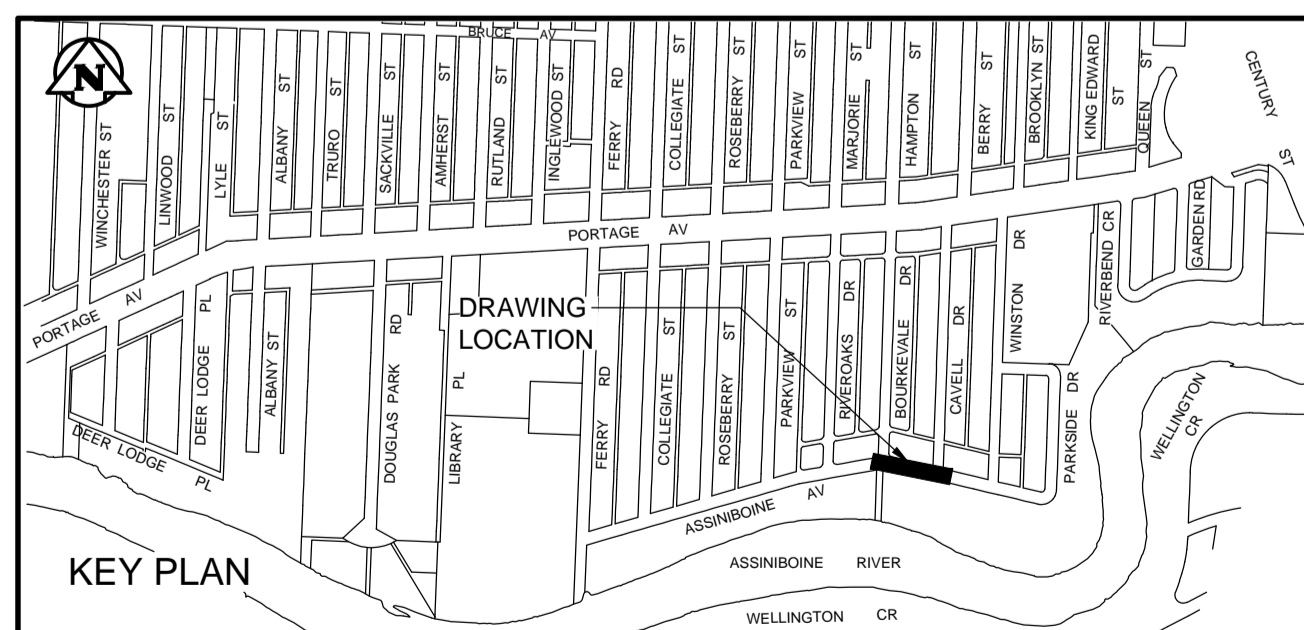


**THE CITY OF WINNIPEG**  
WATER AND WASTE DEPARTMENT

FERRY ROAD AND RIVERBEND  
COMBINED SEWER RELIEF WORKS  
CONTRACT SE-2

ASSINIBOINE AVENUE  
BOURKEVALE DRIVE TO  
38m EAST OF CAVELL DRIVE

CITY DRAWING NUMBER: LD-8166  
SHEET 1 OF 10  
DRAWING LOCATION: C0526



BID OPPORTUNITY No. 269-2017