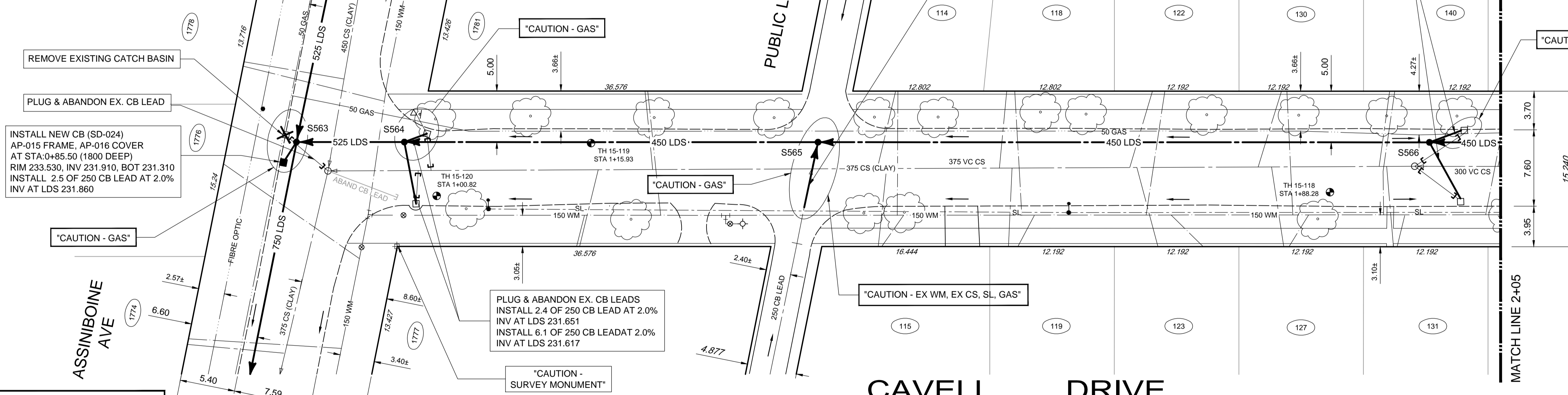


DWG NORTH



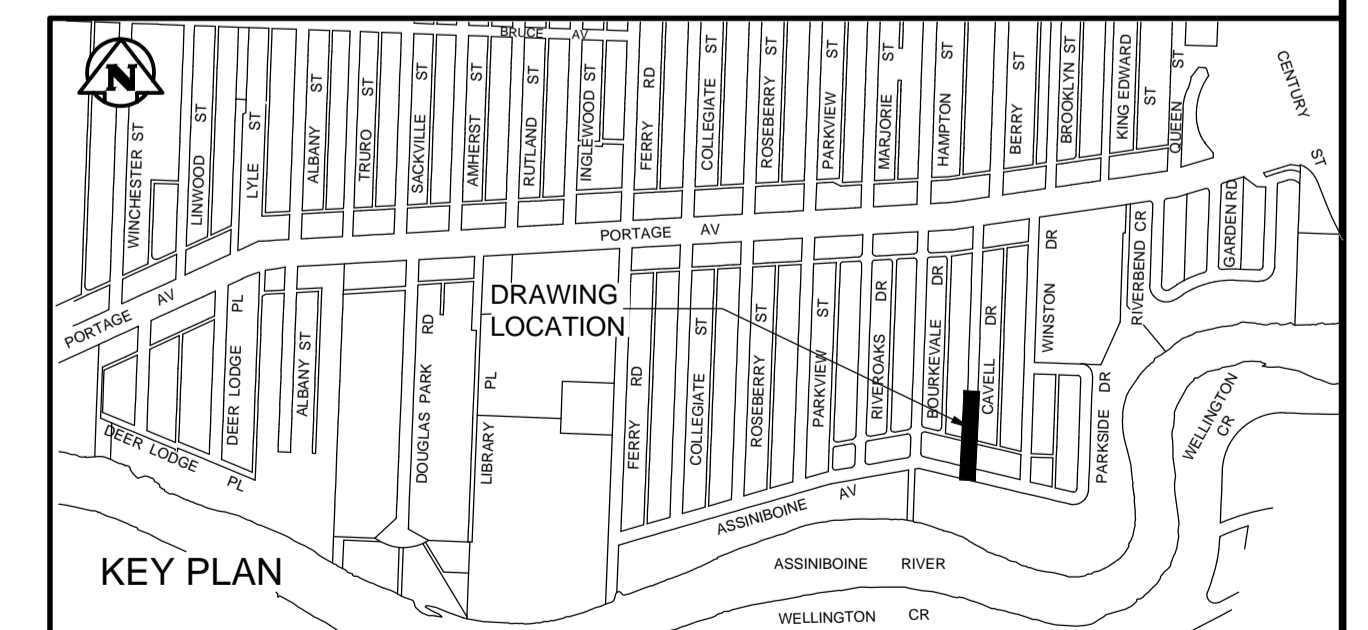
1. LOCATION OF ALL SEWER AND WATER LINES TO BE CONFIRMED IN THE FIELD.
2. SEWER AND WATER SERVICES SHOWN ON DRAWINGS ARE APPROXIMATE ONLY.
3. INSTALL NEW SEWER AND CATCHBASIN LEADS BY TRENCHLESS METHODS, UNLESS NOTED OTHERWISE. INSTALL TYPE 'B' RISERS ON CATCHBASIN LEADS AS REQUIRED.

GENERAL NOTES:

1. CHAINAGE IS ALONG WEST LIMIT OF CAVELL DR.
2. STATION 1+00 = WEST LIMIT OF CAVELL DR AND NORTH LIMIT OF ASSINIBOINE AVE.
3. SEE SPECIFICATIONS FOR DETAILED TEST HOLE INFORMATION.

ENGINEERS GEOSCIENTISTS MANITOBA
 Certificate of Authorization
 Tetra Tech Canada Inc.
 No. 6499

BID OPPORTUNITY No. 269-2017



WARNING
 IF POWER EQUIPMENT OR EXPLOSIVES ARE TO BE USED FOR EXCAVATION ON THIS PROJECT THE CONTRACTOR MUST:
 1. NOTIFY THE GAS COMPANY OF THE PROPOSED LOCATION OF EXCAVATION.
 2. TAKE PRECAUTION TO AVOID DAMAGE TO GAS COMPANY INSTALLATIONS. SEE PROVINCIAL REGULATION 149/92 FOR DETAILS.

EXISTING	LEGEND-PLAN	PROPOSED	EXISTING	LEGEND-PLAN	PROPOSED	EXISTING	LEGEND-PLAN	PROPOSED
150 WM	WATERMAIN	150 WM	TEE	ANCHOR	LOCATION APPROVED UNDERGROUND STRUCTURES	B.M. CITY OF WINNIPEG 38-069		
400 FM	FEEDERMAIN	400 FM	CURB STOP	TREE	ELEV. 233.792m			
300 LDS	LAND DRAINAGE SEWER	300 LDS	PLUG	LEGAL DIMENSION				
250 WWS	WASTEWATER SEWER	250 WWS	MANHOLE	SURVEY BAR				
300 CS	COMBINED SEWER	300 CS	CATCHBASIN MANHOLE	TRAFFIC SIGNAL				
200 FCM	FORCEMAIN	200 FCM	CATCHBASIN	GAS				
	JUNCTIONS		CURB INLET	HYDRO				
	HYDRANT		HYDRO POLE	MTS				
	VALVE		LIGHT STANDARD	CURB				
	BEND							

NOTE:
 LOCATION OF UNDERGROUND STRUCTURES AS SHOWN ARE BASED ON THE BEST INFORMATION AVAILABLE. BUT NO GUARANTEE IS GIVEN THAT ALL EXISTING UTILITIES ARE SHOWN OR THAT THE GIVEN LOCATIONS ARE EXACT. CONFIRMATION OF EXISTENCE AND EXACT LOCATION OF ALL SERVICES MUST BE OBTAINED FROM THE INDIVIDUAL UTILITIES BEFORE PROCEEDING WITH CONSTRUCTION.

NO.	ISSUED FOR TENDER	2017.03.28	KJM
	REVISIONS	DATE	BY

TETRA TECH

DESIGNED BY	KJM	CHECKED BY	KJM
DRAWN BY	NL	APPROVED BY	GS
HOR. SCALE:	1 : 250	RELEASED FOR CONSTRUCTION	
VERTICAL:	1 : 50		

PROVINCE OF MANITOBA
 K.J. McRAE
 REGISTERED PROFESSIONAL ENGINEER
 2017-03-28

THE CITY OF WINNIPEG
 WATER AND WASTE DEPARTMENT

FERRY ROAD AND RIVERBEND
 COMBINED SEWER RELIEF WORKS
 CONTRACT SE-2
 CAVELL DRIVE
 ASSINIBOINE AVE TO
 105m NORTH OF ASSINIBOINE AVE

CITY DRAWING NUMBER
LD-8171
 SHEET **6** OF **10**
C0531

CONSULTANT DRAWING NO.
 1000120300-DWG-C0531