

- NOTES:**
- ALL WORK AND MATERIALS ARE IN ACCORDANCE WITH THE LATEST REVISION OF THE CITY OF WINNIPEG STANDARD CONSTRUCTION SPECIFICATIONS.
 - ADJUST MH, CB RIMS, AND VALVES TO NEW GRADES.
 - MODIFIED BARRIER CURB (SD-203B) TO BE USED AT ALL INTERSECTION RADI, BACK LANE RADI, AND BULL NOSES.
 - CONTRACTOR TO CONFIRM THE LOCATION OF ALL UTILITIES/SERVICES IN THE FIELD PRIOR TO CONSTRUCTION.
 - ADD 200.00m TO ABBREVIATED ELEVATIONS TO OBTAIN GEODETIC ELEVATIONS.
 - CB OFFSETS ARE DIMENSIONED TO BACK OF CURB.
 - FOR SIDEWALK DETAIL SEE STREETSCAPE DRAWINGS.

NOTE: These design documents are prepared solely for the use by the party with whom the design professional has entered into a contract and there are no representations of any kind made by the design professional to any party with whom the design professional has not entered into a contract.

SYMBOL	DESCRIPTION	STATUS	SYMBOL	DESCRIPTION	STATUS
---	WATER MAIN	---	---	GROUND GRADE	---
---	LAND DRAINAGE SEWER	(31.00)	---	PAVEMENT GRADE	(31.00)
---	WASTE WATER SEWER	---	---	LOT GRADE	(31.00)
---	HYDRO	---	---	IRON BAR	---
○	M.T.S.	---	---	HYDRO POLE & LIGHT STANDARD	---
○	GAS	---	---	LIGHT STANDARD	EXISTING
---	SIGNALS	---	---	LEGEND-PLAN	CONSTRUCTED
○	MANHOLE	---	---	HYDRO POLE	---
□	CATCH BASIN	---	---	CURB RAMP	---
△	CURB INLET	---	---	DETECTABLE WARNING SURFACE TILE	---
---	UTILITIES ADJUSTED	△ □ ○	---	EDGE OF SIDEWALK	---
⌈	PLUG	---	---	PROPERTY LINE	---
⊕	HYDRANT	---	---	EDGE OF PAVEMENT	---
⊖	VALVE	---	---	EDGE OF CONCRETE	---
⊙	CURB STOP	---	---	MODIFIED BARRIER CURB	---
EXISTING	LEGEND-PLAN	CONSTRUCTED	EXISTING	LEGEND-PLAN	CONSTRUCTED
				LEGEND-PROFILE	CONSTRUCTED

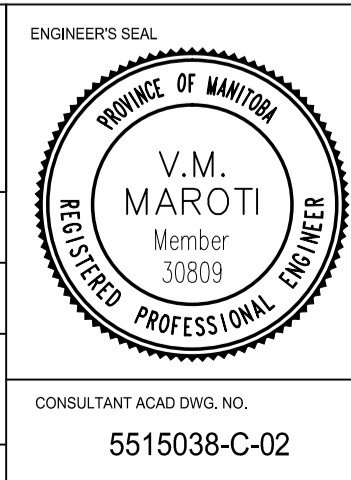
LOCATIONS APPROVED UNDERGROUND STRUCTURES
 SIGNED BY: _____ DATE: _____
 SUPV UG STRUCTURES: _____ DATE: _____
 LOCATION OF UNDERGROUND STRUCTURES AS SHOWN ARE BASED ON THE BEST INFORMATION AVAILABLE BUT NO GUARANTEE IS GIVEN THAT ALL EXISTING UTILITIES ARE SHOWN OR THAT THE GIVEN LOCATIONS ARE EXACT CONFIRMATION OF EXISTENCE AND EXACT LOCATION OF ALL SERVICES MUST BE OBTAINED FROM THE INDIVIDUAL UTILITIES BEFORE PROCEEDINGS.



TYPICAL CROSS-SECTION
 NTS

NO.	REVISIONS	DATE	BY
2	POSTED FOR TENDER	08/02/17	VM
1	SUBMIT TO UGS	07/02/17	VM

DESIGNED BY	CHECKED BY	DESIGNED BY	CHECKED BY
VM/MV	VM	EL/SB	VM
DESIGNED BY	APPROVED BY	DESIGNED BY	APPROVED BY



THE CITY OF WINNIPEG
 PUBLIC WORKS DEPARTMENT
 TRANSPORTATION DIVISION

2017 NORTH EAST EXCHANGE DISTRICT STREET RENEWALS
 PACIFIC AVENUE
 MAIN STREET TO LILY STREET
 ASPHALT OVERLAY
 STA. 1+90.00 TO STA. 2+76.87

RFP NO. 27-2017

Sheet 2 of 2

METRIC

WHOLE NUMBERS INDICATE MILLIMETRES
 DECIMALIZED NUMBERS INDICATE METRES

