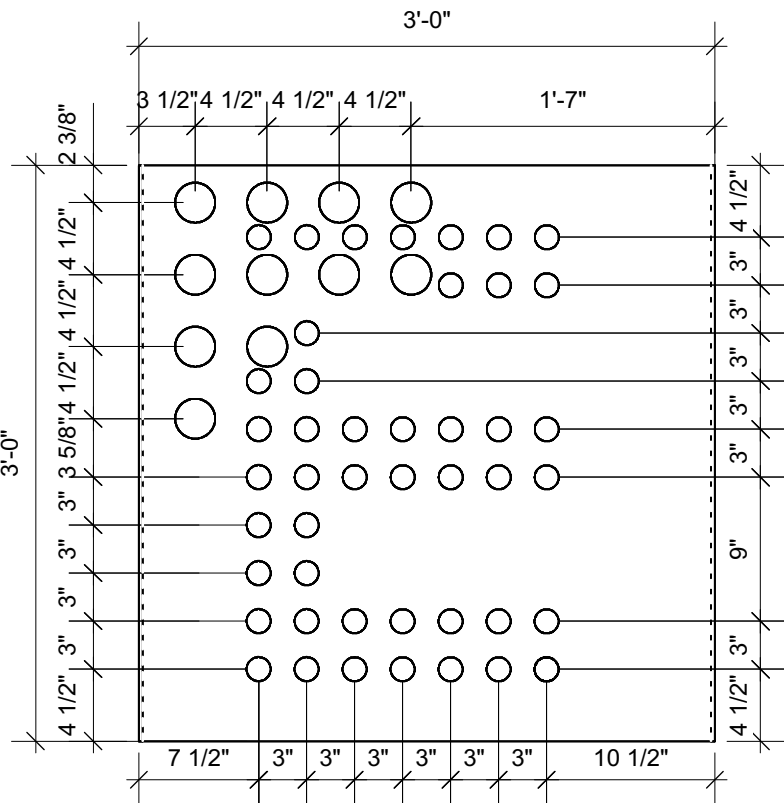
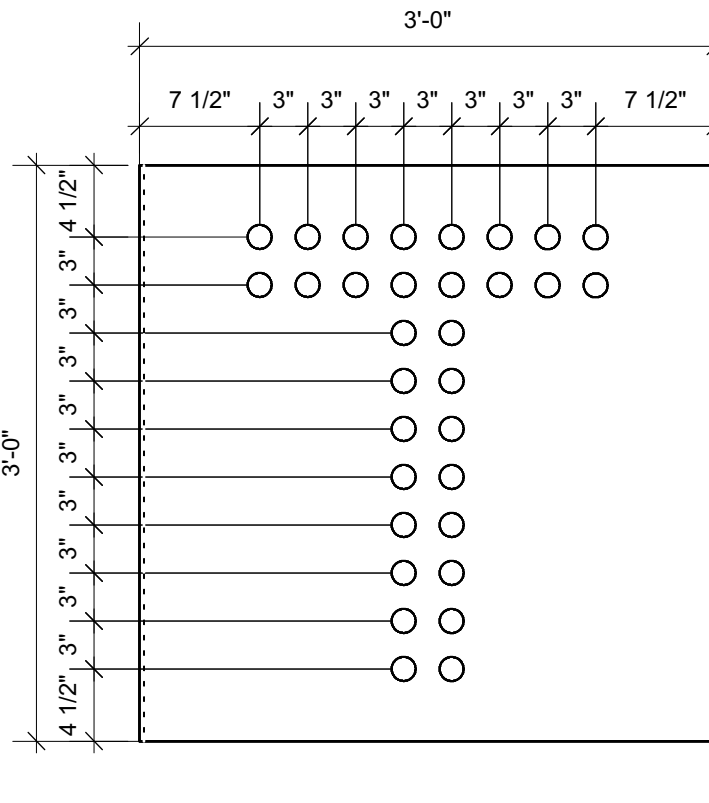


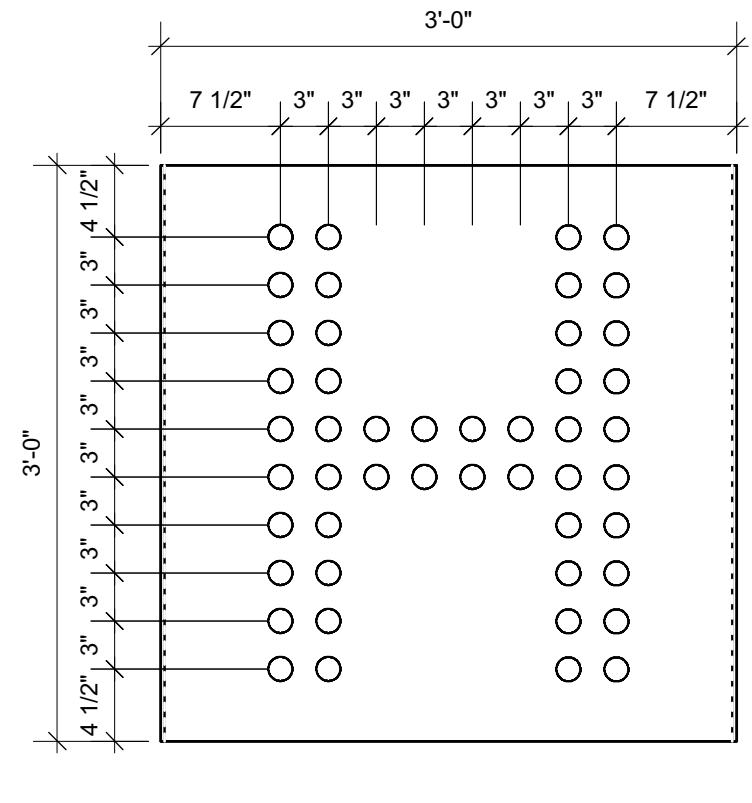
1 **Module D11**
Scale: 1" = 1'-0"



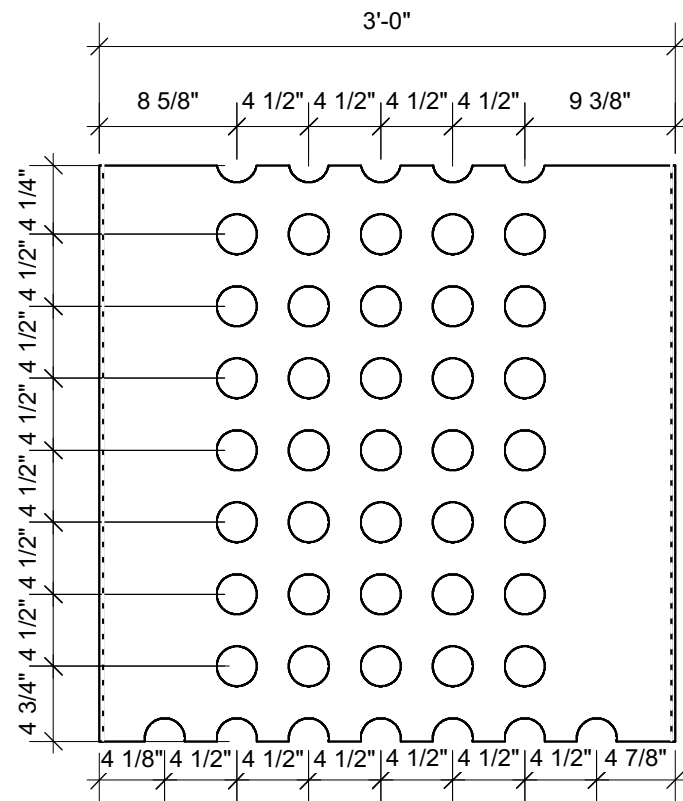
2 **Module D12**
Scale: 1" = 1'-0"



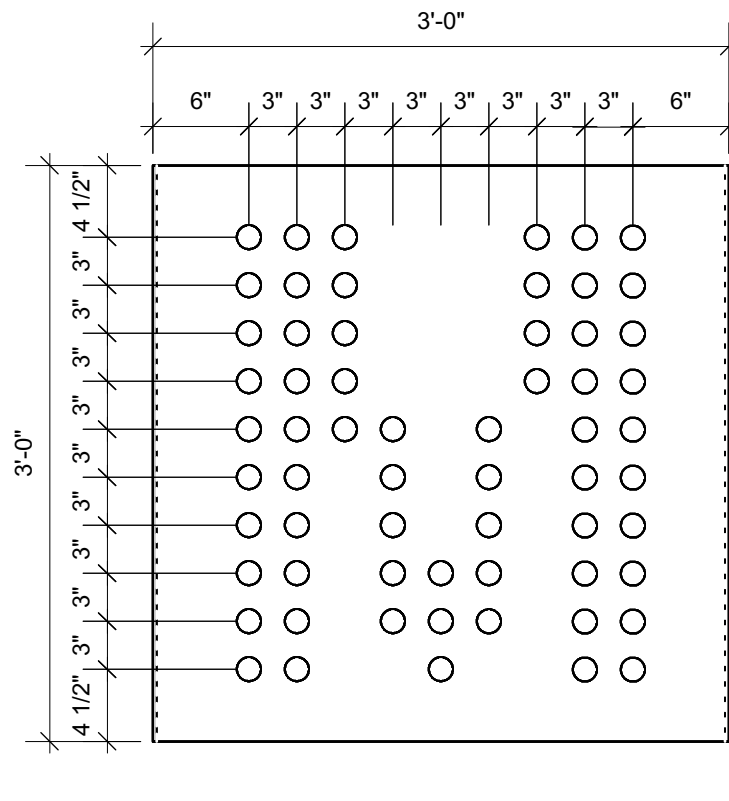
3 **Module D13**
Scale: 1" = 1'-0"



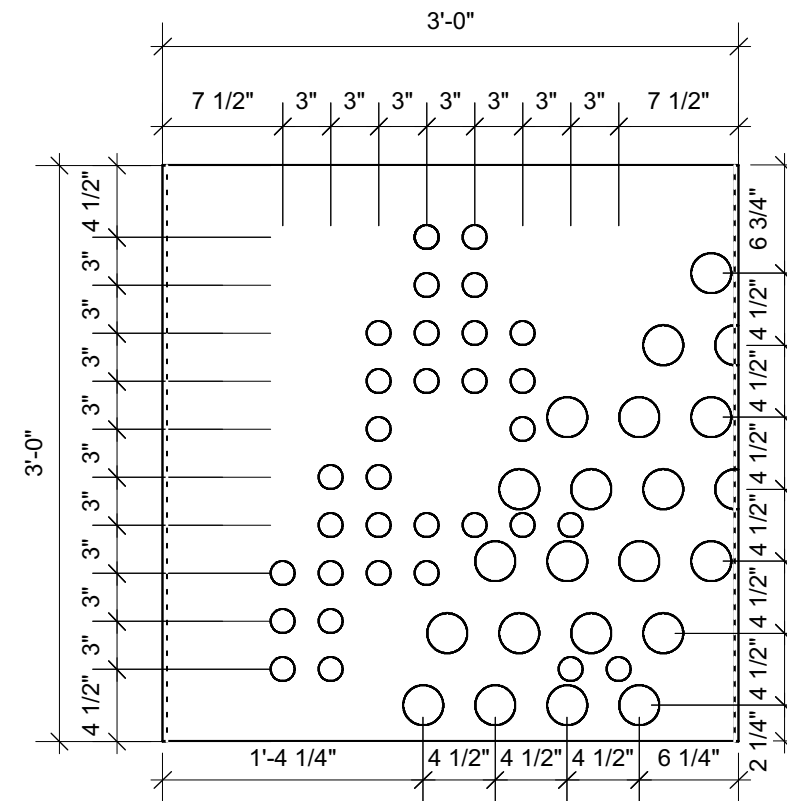
4 **Module E01**
Scale: 1" = 1'-0"



5 **Module E02**
Scale: 1" = 1'-0"



6 **Module E03**
Scale: 1" = 1'-0"



7 **Module E04**
Scale: 1" = 1'-0"

⊕ Brass rivets $\phi=1\ 1/2"$
(see drawing A7.1)

⊕ Holes $\phi=2\ 1/2"$

DRAWING A7.9 ADDED - 2017/01/09
ISSUED FOR CONSTRUCTION 2016/11/28
ISSUED FOR PRICING 2016/10/20

1602	2017/01/09
------	------------

PROVINCE OF MANITOBA
THOMAS MONTEYNE
REGISTERED ARCHITECT

PROVINCE OF MANITOBA
MONTEYNE ARCHITECTURE WORKS
INCORPORATED
No. 103
REGISTERED ARCHITECTURAL FIRM

MONTEYNE
architecture works
INCORPORATED

www.mont-arc.com 204 947 3155 194 Sherbrook St. Winnipeg R3C 2B6

1919 MARQUEE
Winnipeg, Manitoba
Intersection Lily St & Market Ave
MODULES D11 TO E04