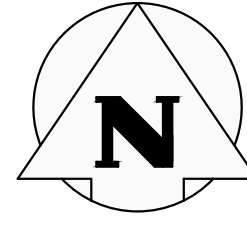
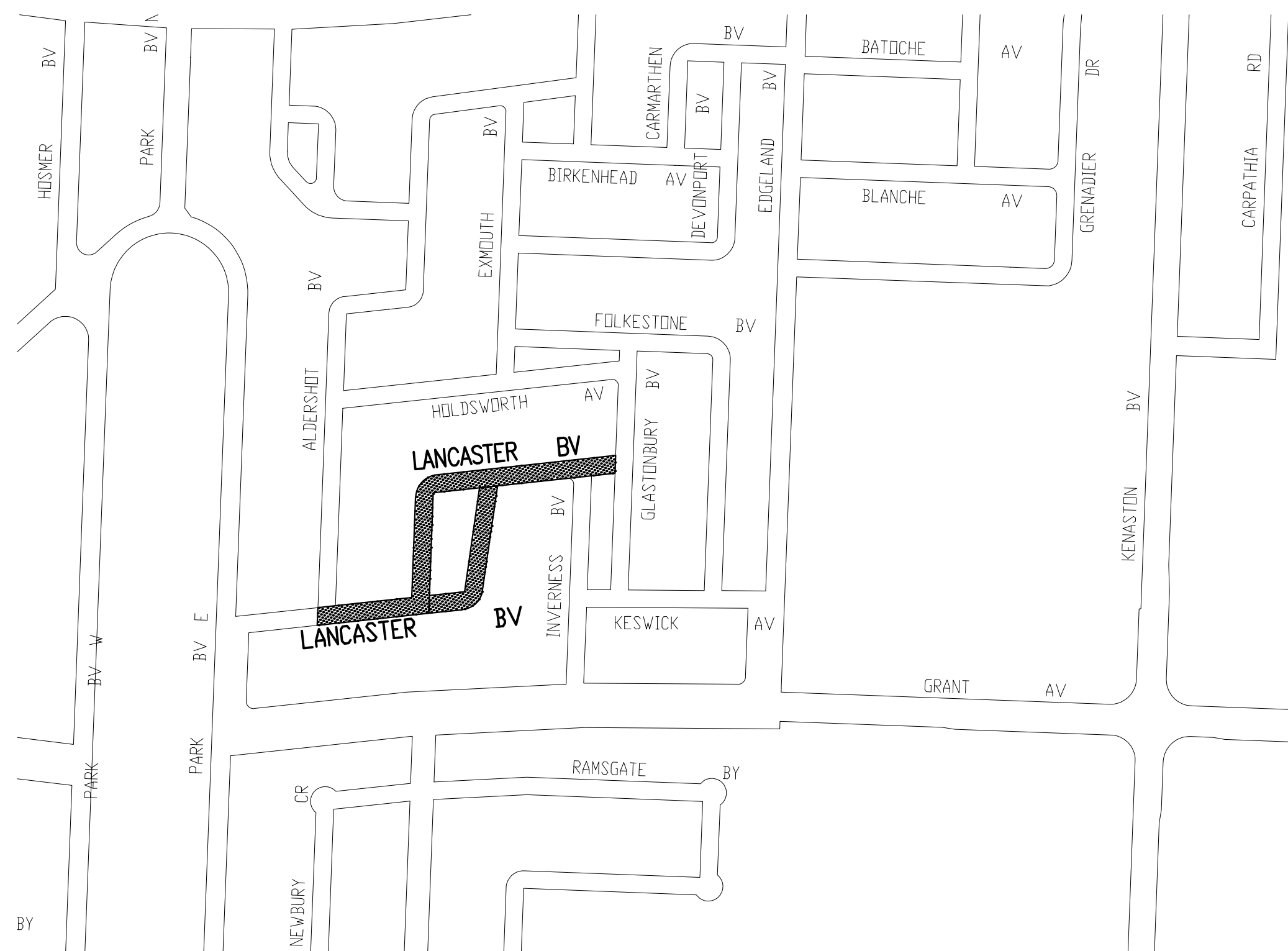
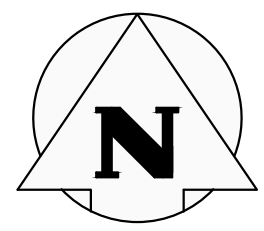


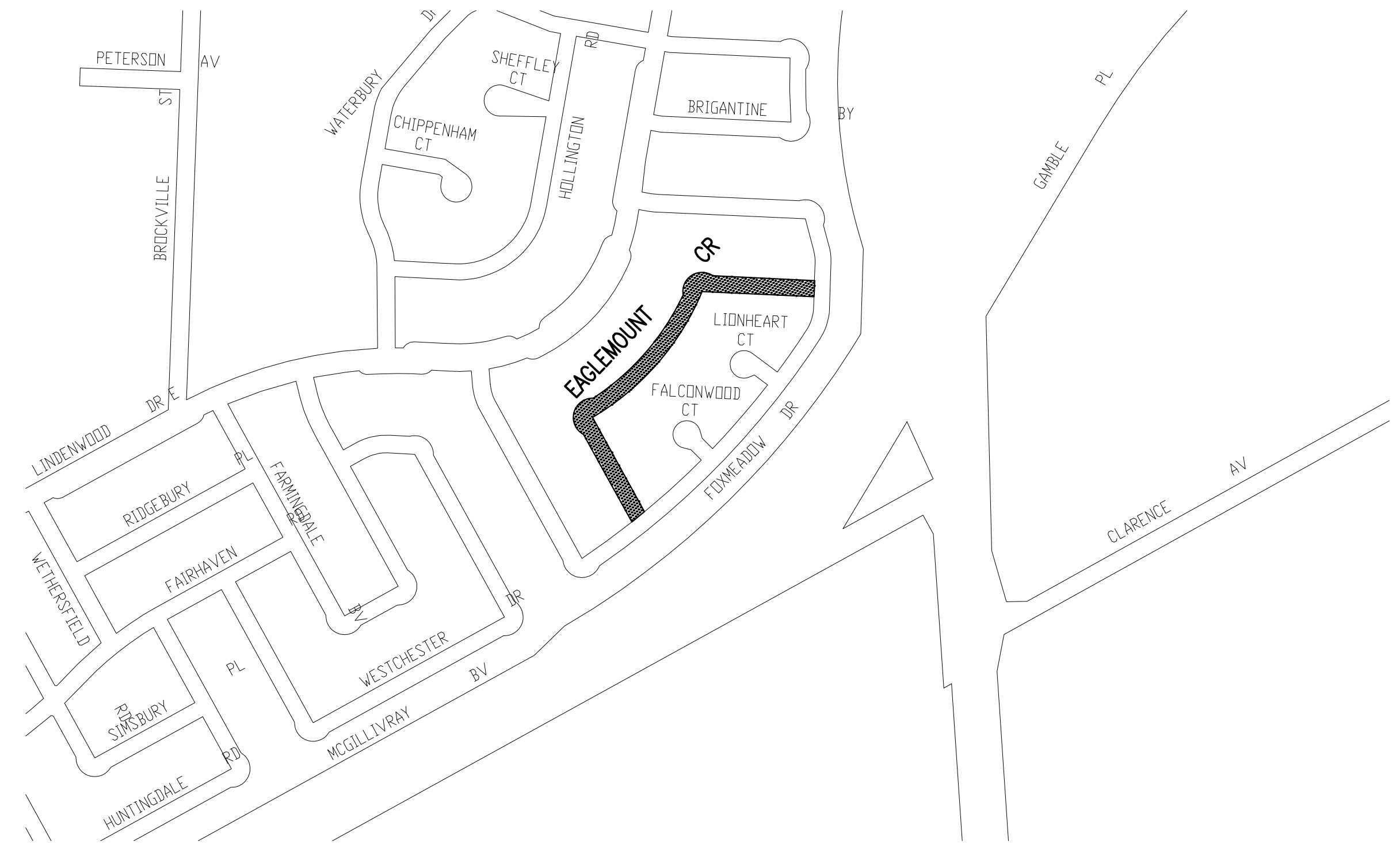
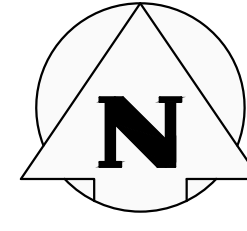
McGEE STREET FROM NOTRE DAME AVENUE TO WELLINGTON AVENUE






WEBB PLACE FROM VAUGHAN STREET TO COLONY STREET

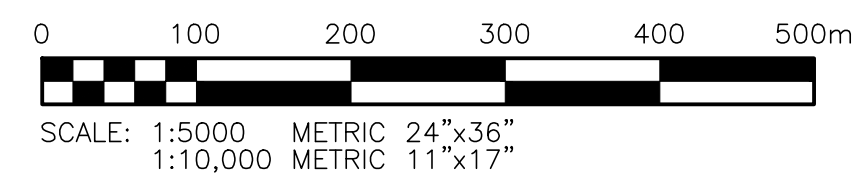


LANCASTER BOULEVARD FROM ALDERSHOT BOULEVARD TO GLASTONBURY BOULEVARD




EAGLEMOUNT CRESCENT FROM FOXMEADOW DRIVE TO FOXMEADOW DRIVE

- LEGEND:**
-  AREA OF NEW OVERLAY
  -  BUS ROUTE
  -  SCHOOL LOCATION



				<b>KGS GROUP</b> CONSULTING ENGINEERS			
DESIGNED BY		MH		CHECKED BY		CR	
DRAWN BY		SAG		APPROVED BY			
HOR. SCALE:		1:250		RELEASED FOR CONSTRUCTION:			
VERTICAL:		1:10		DATE		12/02/16	
NO.		ISSUED FOR TENDER		DATE		17/03/15	
NO.		REVISIONS		DATE		BY	
				CONSULTANT DRAWING NO.		C02	

 THE CITY OF WINNIPEG  
PUBLIC WORKS DEPARTMENT  
ENGINEERING DIVISION

**2017 THIN BITUMINOUS OVERLAY (TBO) PROGRAM – WEST CONTRACT**

McGEE STREET, WEBB PLACE, LANCASTER BOULEVARD, AND EAGLEMOUNT CRESCENT

PROJECT TITLE	SHEET	OF
	02	03
COMPUTER FILE NAME	TBO WEST CONTRACT.DWG	
CITY DRAWING NUMBER		