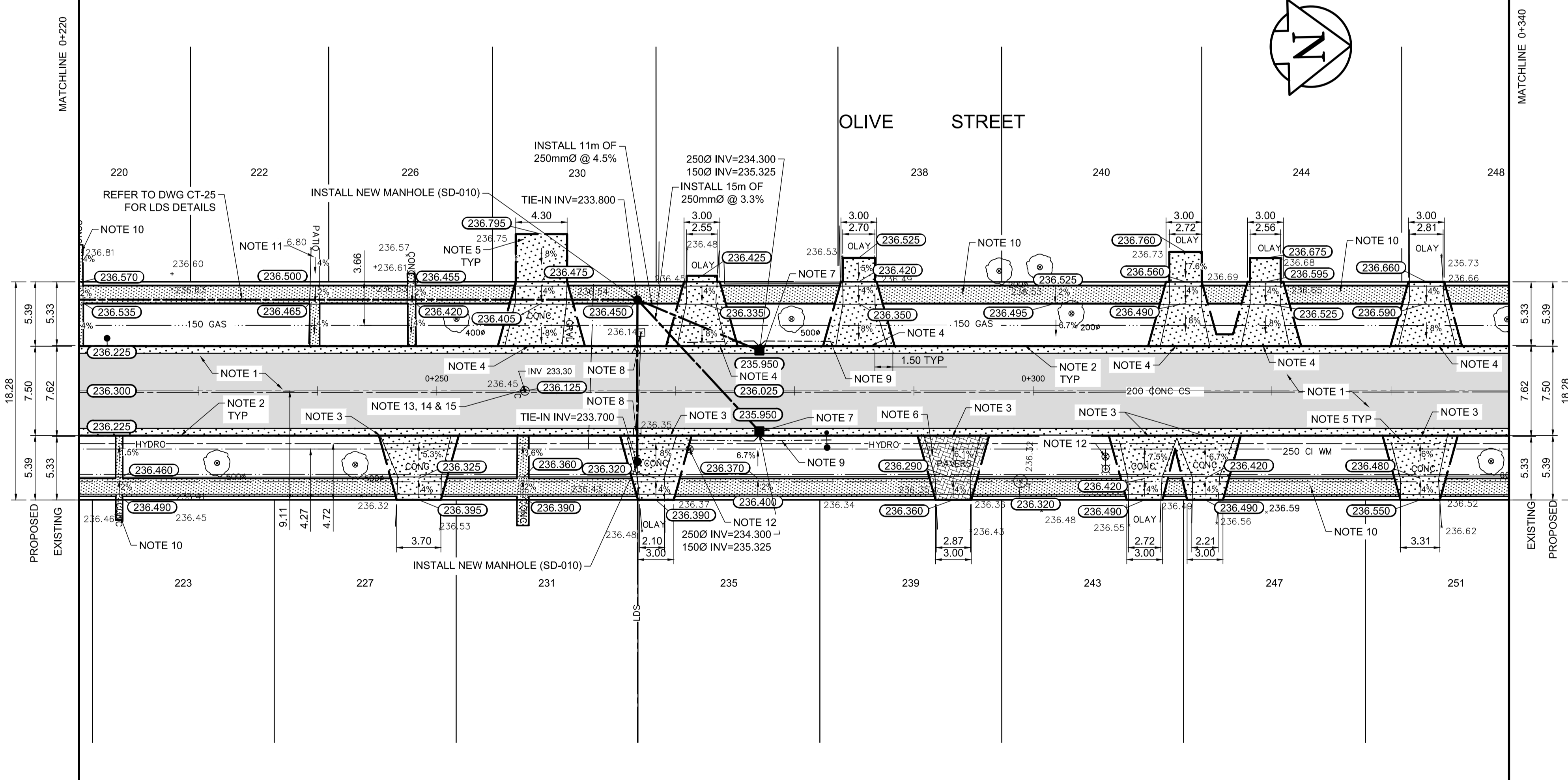


TYPICAL CROSS SECTION
 100 ASPHALT (TYPE 1A)
 75 LIMESTONE BASE COURSE
 300 CRUSHED SUB BASE MATERIAL (MAX. SIZE 50mm)
 NON WOVEN GEOTEXTILE



REFERENCE NOTES

- A. PAVEMENT DIMENSIONS ARE TO BACK OF CURB
- B. BASELINE IS CENTRE LINE RIGHT-OF-WAY
- C. PROPERTY LINES OBTAINED FROM CITY OF WINNIPEG L.B.I.S., AND NO SCALE FACTOR WAS APPLIED
- D. REFER TO AECOM FIELD BOOK NO. 4979

CONSTRUCTION NOTES

1. REMOVE EXISTING CONCRETE AND ASPHALTIC PAVEMENT AND CONSTRUCT NEW ASPHALTIC PAVEMENT TYPE 1A (100mm)
2. CONSTRUCT NEW BARRIER CURB AND GUTTER (180mm HT.)
3. CONSTRUCT NEW LIP CURB AND GUTTER (40mm HT. INTEGRAL)
4. CONSTRUCT NEW LIP CURB AND GUTTER (75mm HT. INTEGRAL)
5. REMOVE EXISTING CONCRETE PAVEMENT AND CONSTRUCT NEW 150mm REINFORCED CONCRETE PAVEMENT
6. REMOVE AND REINSTALL EXISTING PAVING STONES TO GRADE
7. INSTALL NEW CURB AND GUTTER INLET c/w CATCHBASIN (SD-024, 1200mm) AND CONNECT TO THE NEW MANHOLE
8. REMOVE EXISTING CATCHBASIN AND ABANDON LEAD
9. INSTALL 150mm SUBDRAIN
10. RENEW EXISTING 100mm CONCRETE SIDEWALK
11. REMOVE AND REINSTALL EXISTING PATIO BLOCKS TO GRADE
12. ADJUST EXISTING WATER VALVE TO GRADE
13. ADJUST EXISTING MANHOLE/CATCH BASIN TO GRADE
14. REMOVE EXISTING FRAME AND COVER AND INSTALL NEW FRAME AND SOLID COVER (AP-005 AND AP-004)
15. INSTALL NEW CAST IRON RISER RING



METRIC
 WHOLE NUMBERS INDICATE MILLIMETRES
 DECIMALIZED NUMBERS INDICATE METRES

150mm W.M.	WATERMAIN	150mm W.M.	HYDRO	X	PROFILE
Hydrant	HYDRANT	300mm L.D.S.	M.T.S.	□	WEST GUTTER
Valve	VALVE	250mm W.W.S.	CONCRETE	○	EAST GUTTER
Land Drainage Sewer	LAND DRAINAGE SEWER	250mm W.W.S.	ASPHALT	◇	N/W PROPERTY LINE
Wastewater Sewer	WASTEWATER SEWER	250mm W.W.S.	PROPERTY LINE	○	S/E PROPERTY LINE
Manhole	MANHOLE	235.750	SURVEY BAR	+	
Catch Basin	CATCH BASIN	235.750	ELEVATION	(235.750)	
Catch Pit	CATCH PIT	2500	TREE	⊕	
Junctions	JUNCTIONS		SIDEWALK RAMP	▬▬▬	
Culvert	CULVERT		CONCRETE SIDEWALK	▬▬▬	
Gas	GAS		FENCE	▬▬▬	
EXISTING	LEGEND - PLAN	PROPOSED	LEGEND - PLAN	PROPOSED	EXISTING
			LEGEND - PROFILE	PROPOSED	

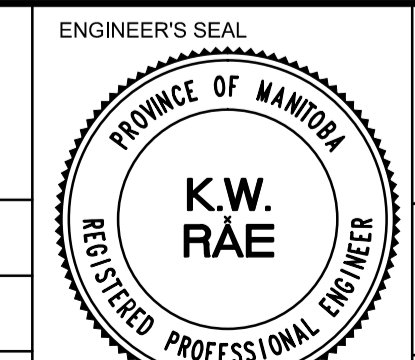
LOCATION APPROVED UNDERGROUND STRUCTURES
 SUPV. U/G STRUCTURES COMMITTEE DATE
 NOTE:
 LOCATION OF UNDERGROUND STRUCTURES AS SHOWN ARE BASED ON THE BEST INFORMATION AVAILABLE. BUT NO GUARANTEE IS GIVEN THAT ALL EXISTING UTILITIES ARE SHOWN OR THAT THE GIVEN LOCATIONS ARE EXACT. CONFIRMATION OF EXISTENCE AND EXACT LOCATION OF ALL SERVICES MUST BE OBTAINED FROM THE INDIVIDUAL UTILITIES BEFORE PROCEEDING WITH CONSTRUCTION.

B.M. 38 - 068 85R655 NE Cor. Lodge Ave. & Whyteford Rd.,
 ELEV. 236.140 Talk on top of 0.05 m dia. x 2.4 m iron pipe, 3.4 m E. of W.L. of Whyteford Rd. & on N.L. of Lodge Ave.

NO.	REVISIONS	DATE	BY	DATE
0	ISSUED FOR TENDER	05/04/2017	BC	
A	ISSUED FOR REVIEW	04/21/2017	BC	



DESIGNED BY	BC/SS	CHECKED BY	BC/KWR
DRAWN BY	JT/PB	APPROVED BY	
HOR. SCALE:	1:250	RELEASED FOR CONSTRUCTION BY:	
VERTICAL:	1:10	DATE	



THE CITY OF WINNIPEG
 PUBLIC WORKS DEPARTMENT
 ENGINEERING DIVISION

2017 LOCAL STREET RENEWAL PROGRAM

OLIVE STREET - PORTAGE AVENUE TO LODGE AVENUE
 ASPHALT RECONSTRUCTION
 STATION 0+220 TO STATION 0+340

CITY DRAWING NUMBER
 SHEET 02 OF 25

CONSULTANT DRAWING NO.
 CT-02