

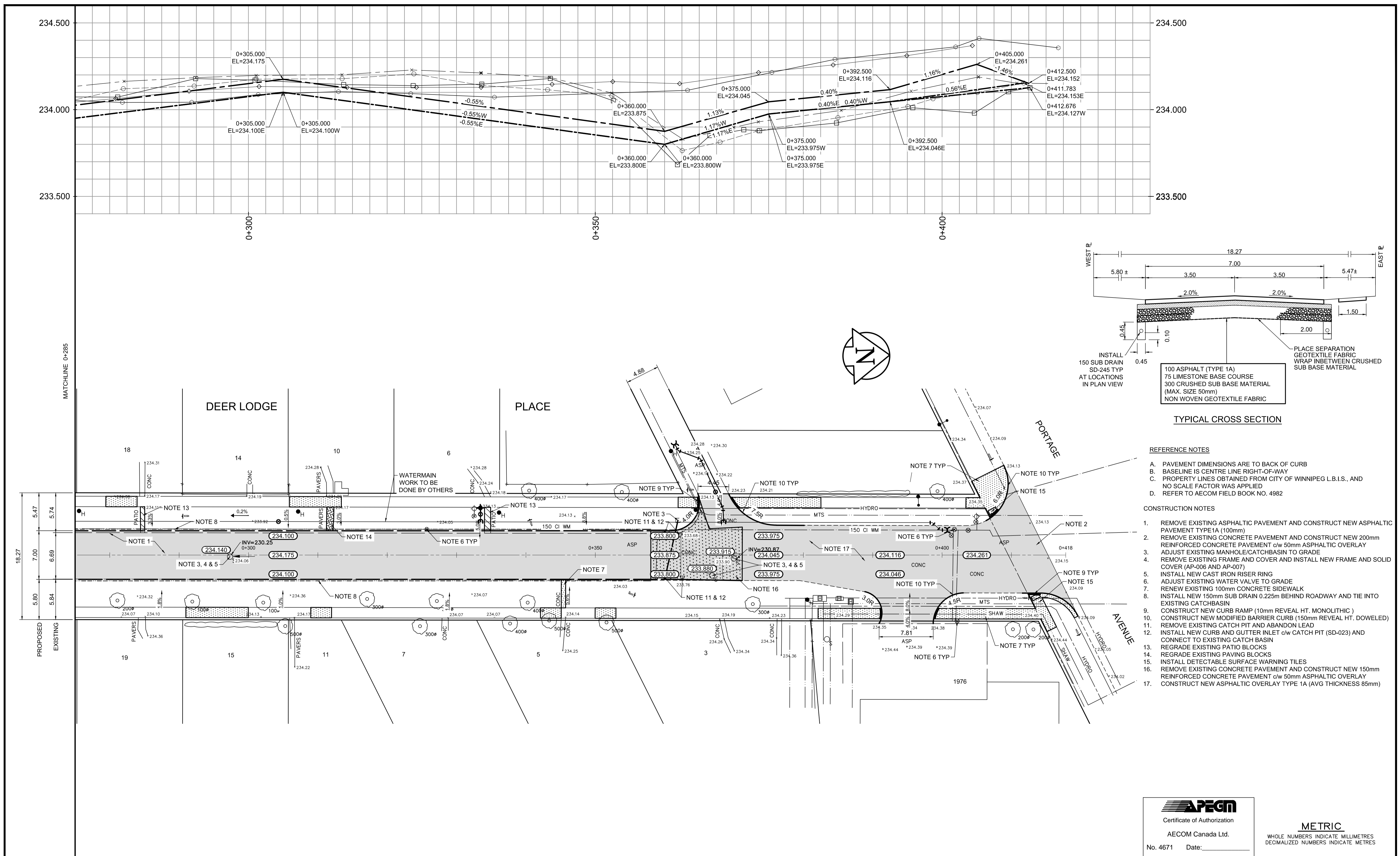
TYPICAL CROSS SECTION

REFERENCE NOTES

- A. PAVEMENT DIMENSIONS ARE TO BACK OF CURB
- B. BASELINE IS CENTRE LINE RIGHT-OF-WAY
- C. PROPERTY LINES OBTAINED FROM CITY OF WINNIPEG L.B.I.S., AND NO SCALE FACTOR WAS APPLIED
- D. REFER TO AECOM FIELD BOOK NO. 4982

CONSTRUCTION NOTES

1. REMOVE EXISTING ASPHALTIC PAVEMENT AND CONSTRUCT NEW ASPHALTIC PAVEMENT TYPE 1A (100mm)
2. REMOVE EXISTING CONCRETE PAVEMENT AND CONSTRUCT NEW 200mm REINFORCED CONCRETE PAVEMENT c/w 50mm ASPHALTIC OVERLAY
3. ADJUST EXISTING MANHOLE/CATCHBASIN TO GRADE
4. REMOVE EXISTING FRAME AND COVER AND INSTALL NEW FRAME AND SOLID COVER (AP-006 AND AP-007)
5. INSTALL NEW CAST IRON RISER RING
6. ADJUST EXISTING WATER VALVE TO GRADE
7. RENEW EXISTING 100mm CONCRETE SIDEWALK
8. INSTALL NEW 150mm SUB DRAIN 0.225m BEHIND ROADWAY AND TIE INTO EXISTING CATCHBASIN
9. CONSTRUCT NEW CURB RAMP (10mm REVEAL HT. MONOLITHIC)
10. CONSTRUCT NEW MODIFIED BARRIER CURB (150mm REVEAL HT. DOWELED)
11. REMOVE EXISTING CATCH PIT AND ABANDON LEAD
12. INSTALL NEW CURB AND GUTTER INLET c/w CATCH PIT (SD-023) AND CONNECT TO EXISTING CATCH BASIN
13. REGRADE EXISTING PATIO BLOCKS
14. REGRADE EXISTING PAVING BLOCKS
15. INSTALL DETECTABLE SURFACE WARNING TILES
16. REMOVE EXISTING CONCRETE PAVEMENT AND CONSTRUCT NEW 150mm REINFORCED CONCRETE PAVEMENT c/w 50mm ASPHALTIC OVERLAY
17. CONSTRUCT NEW ASPHALTIC OVERLAY TYPE 1A (AVG THICKNESS 85mm)



METRIC
WHOLE NUMBERS INDICATE MILLIMETRES
DECIMALIZED NUMBERS INDICATE METRES

150 mm W.M.	WATERMAIN	150 mm W.M.	HYDRO	— x —	PROFILE
Hydrant symbol	HYDRANT	Hydrant symbol	M.T.S.	— □ —	WEST GUTTER
Valve symbol	VALVE	Valve symbol	CONCRETE	— ○ —	EAST GUTTER
300mm L.D.S.	LAND DRAINAGE SEWER	300mm L.D.S.	ASPHALT	— ○ —	N/W PROPERTY LINE
250mm W.W.S.	WASTEWATER SEWER	250mm W.W.S.	PROPERTY LINE	— ○ —	S/E PROPERTY LINE
Manhole symbol	MANHOLE	Manhole symbol	SURVEY BAR	— ○ —	
Catch Basin symbol	CATCH BASIN	Catch Basin symbol	ELEVATION	(235.750)	
Catch Pit symbol	CATCH PIT	Catch Pit symbol	TREE	— ○ —	
Junctions symbol	JUNCTIONS	Junctions symbol	SIDEWALK RAMP	— ○ —	
Culvert symbol	CULVERT	Culvert symbol	CONCRETE SIDEWALK	— ○ —	
Gas symbol	GAS	Gas symbol	FENCE	— ○ —	
Existing symbol	LEGEND - PLAN	Proposed symbol	LEGEND - PLAN	Proposed symbol	LEGEND - PROFILE
Existing symbol	LEGEND - PLAN	Proposed symbol	LEGEND - PLAN	Proposed symbol	LEGEND - PROFILE

LOCATION APPROVED UNDERGROUND STRUCTURES

SUPV. U/G STRUCTURES COMMITTEE DATE

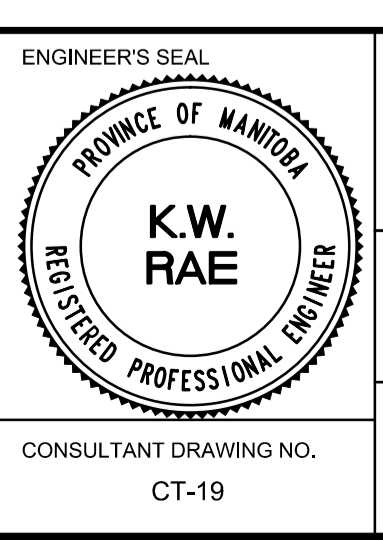
NOTE:
LOCATION OF UNDERGROUND STRUCTURES AS SHOWN ARE BASED ON THE BEST INFORMATION AVAILABLE. BUT NO GUARANTEE IS GIVEN THAT ALL EXISTING UTILITIES ARE SHOWN OR THAT THE GIVEN LOCATIONS ARE EXACT. CONFIRMATION OF EXISTENCE AND EXACT LOCATION OF ALL SERVICES MUST BE OBTAINED FROM THE INDIVIDUAL UTILITIES BEFORE PROCEEDING WITH CONSTRUCTION.

B.M. 38 - 050 S. side Deer Lodge Pl. near intersection of E. Leg of Deer Lodge Pl. Till. in E. Conc. foundation No. ELEV. 232.645
48 Deer Lodge Pl. 0.5 m S. & 0.4 m below stucco of N.E. Cor. of dwelling.

0	ISSUED FOR TENDER	05/04/2016	BC
A	ISSUED FOR REVIEW	04/12/2016	BC
NO.	REVISIONS	DATE	BY

AECOM

DESIGNED BY	BC/SS	CHECKED BY	BC/KWR
DRAWN BY	JC/SS	APPROVED BY	
HOR. SCALE:	1:250	RELEASED FOR CONSTRUCTION BY:	
VERTICAL:	1:10	DATE	



THE CITY OF WINNIPEG
PUBLIC WORKS DEPARTMENT
ENGINEERING DIVISION

2017 LOCAL STREET RENEWAL PROGRAM

DEER LODGE PLACE-PORTAGE AVENUE TO PORTAGE AVENUE
ASPHALT RECONSTRUCTION
STATION 0+275 TO PORTAGE AVENUE

CITY DRAWING NUMBER
SHEET 19 OF 25

CONSULTANT DRAWING NO. CT-19