

- REFERENCE NOTES**
- PAVEMENT DIMENSIONS ARE TO BACK OF CURB
  - BASELINE IS CENTRE LINE RIGHT-OF-WAY
  - PROPERTY LINES OBTAINED FROM CITY OF WINNIPEG L.B.I.S., AND NO SCALE FACTOR WAS APPLIED

- CONSTRUCTION NOTES**
- PLANE EXISTING ASPHALT AND CONSTRUCT NEW ASPHALTIC OVERLAY TYPE 1A (AVG THICKNESS 85mm)
  - REMOVE EXISTING CONCRETE PAVEMENT AND CONSTRUCT NEW 200mm REINFORCED CONCRETE PAVEMENT
  - RENEW EXISTING 100mm CONCRETE SIDEWALK
  - CONSTRUCT NEW BARRIER CURB (150mm REVEAL HT. SEPERATE)
  - CONSTRUCT NEW CURB RAMP (10mm REVEAL HT. INTEGRAL)
  - CONSTRUCT NEW CURB RAMP (150mm REVEAL HT. MONOLITHIC)
  - CONSTRUCT NEW MODIFIED BARRIER CURB (150mm REVEAL HT. INTEGRAL)
  - CONSTRUCT NEW MODIFIED BARRIER CURB (150mm REVEAL HT. DOWELLED)
  - CONSTRUCT NEW MONOLITHIC CONCRETE BULLNOSE
  - RENEW EXISTING CONCRETE BARRIER CURB (150mm REVEAL HT. DOWELLED)
  - INSTALL NEW CURB AND GUTTER INLET c/w 1200mm CATCHBASIN (SD-024) AND CONNECT TO EXISTING 450mm CONCRETE LDS
  - INSTALL NEW CURB AND GUTTER INLET c/w 1200mm CATCHBASIN (SD-024) AND CONNECT TO EXISTING 250mm LEAD
  - ADJUST EXISTING MANHOLE/CATCH BASIN TO GRADE
  - REMOVE EXISTING FRAME AND COVER AND INSTALL NEW FRAME AND SOLID COVER (AP-005 AND AP-004)
  - INSTALL NEW CAST IRON RISER RING
  - REMOVE EXISTING CATCHBASIN AND ABANDON LEAD
  - REMOVE EXISTING CATCHPIT AND ABANDON LEAD
  - ADJUST EXISTING WATER VALVE TO GRADE
  - INSTALL NEW DETECTABLE WARNING SURFACE TILES
  - INSTALL NEW CURB AND GUTTER INLET c/w 1800mm CATCHBASIN (SD-024) AND CONNECT TO EXISTING 250mm LEAD

**AECOM**  
 Certificate of Authorization  
 AECOM Canada Ltd.  
 No. 4671 Date: \_\_\_\_\_

**METRIC**  
 WHOLE NUMBERS INDICATE MILLIMETRES  
 DECIMALIZED NUMBERS INDICATE METRES

150 mm W.M.	WATERMAIN	150 mm W.M.	HYDRO	X	PROFILE
Hydrant	HYDRANT	Hydrant	M.T.S.	West-Median Gutter	West-Median Gutter
Valve	VALVE	Valve	CONCRETE	West-Gutter	West-Gutter
300mm L.D.S.	LAND DRAINAGE SEWER	300mm L.D.S.	ASPHALT	East-Median Gutter	East-Median Gutter
250mm W.W.S.	WASTEWATER SEWER	250mm W.W.S.	PROPERTY LINE	East-Gutter	East-Gutter
Manhole	MANHOLE	Manhole	SURVEY BAR	N/W PROPERTY LINE	N/W PROPERTY LINE
Catch Basin	CATCH BASIN	Catch Basin	ELEVATION (235.750)	S/E PROPERTY LINE	S/E PROPERTY LINE
Catch Pit	CATCH PIT	Catch Pit	TREE		
Junctions	JUNCTIONS	Junctions	SIDEWALK RAMP		
Culvert	CULVERT	Culvert	CONCRETE SIDEWALK		
Gas	GAS	Gas	FENCE		
EXISTING	LEGEND - PLAN	PROPOSED	LEGEND - PLAN	PROPOSED	EXISTING
			LEGEND - PROFILE	PROPOSED	PROPOSED

**LOCATION APPROVED UNDERGROUND STRUCTURES**

SUPV. U/G STRUCTURES COMMITTEE DATE

**NOTE:**  
 LOCATION OF UNDERGROUND STRUCTURES AS SHOWN ARE BASED ON THE BEST INFORMATION AVAILABLE. BUT NO GUARANTEE IS GIVEN THAT ALL EXISTING UTILITIES ARE SHOWN OR THAT THE GIVEN LOCATIONS ARE EXACT. CONFIRMATION OF EXISTENCE AND EXACT LOCATION OF ALL SERVICES MUST BE OBTAINED FROM THE INDIVIDUAL UTILITIES BEFORE PROCEEDING WITH CONSTRUCTION.

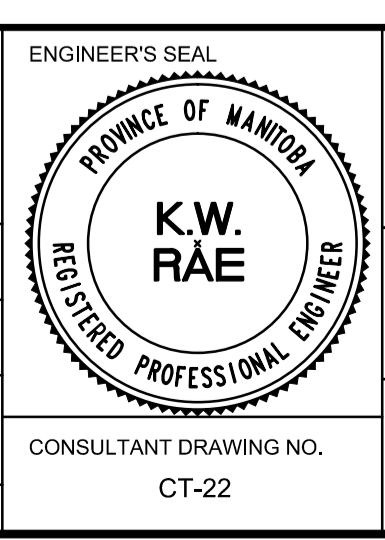
B.M. 37 - 041 83R494 - N.W. Cor. McBey Ave. & Kirkfield St. Tbl. on top of 0.05 m dia. x 2.4 iron pipe, 5.4 m N. ELEV. 235.997

of C.L. Conc. Pav't of McBey Ave. & 9.2 m. W of C.L. Conc. Pav't of Kirkfield St.

DESIGNED BY	SS/JT	CHECKED BY	BC/KWR
DRAWN BY	JC/UT/PB	APPROVED BY	
HOR. SCALE:	1:250	RELEASED FOR CONSTRUCTION BY:	
VERTICAL:	1:10	DATE	

**AECOM**

ISSUED FOR TENDER	05/04/2017	BC
ISSUED FOR REVIEW	04/21/2017	BC
NO. REVISIONS		



**THE CITY OF WINNIPEG**  
 PUBLIC WORKS DEPARTMENT  
 ENGINEERING DIVISION

2017 LOCAL STREET RENEWAL PROGRAM

WESTWOOD AVENUE - SANSOME AVENUE TO PORTAGE AVENUE  
 PAVEMENT REHABILITATION  
 STATION 0+330 TO STATION 0+460

CITY DRAWING NUMBER  
 SHEET 22 OF 25

CONSULTANT DRAWING NO. CT-22