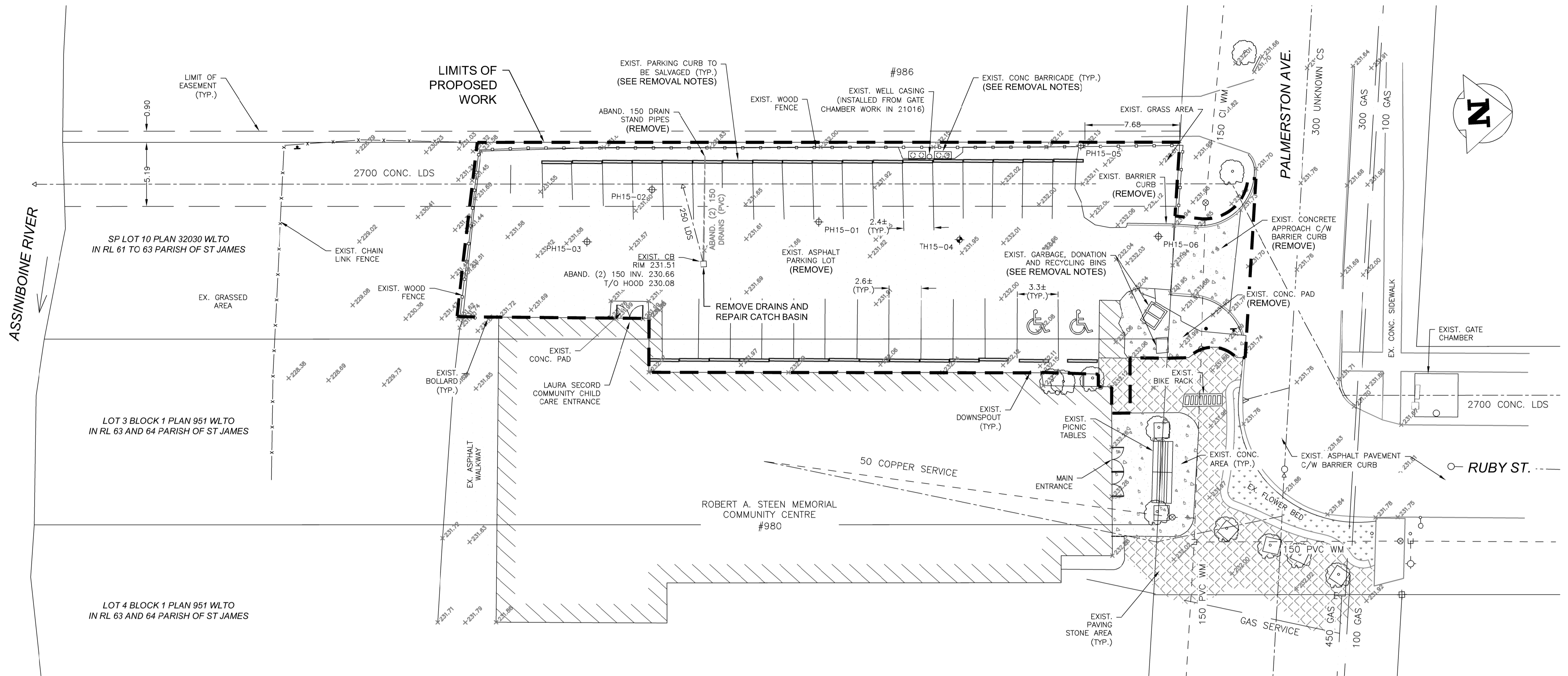


KEY PLAN
N.T.S.



GENERAL CONSTRUCTION NOTES:

- ALL CONSTRUCTION AND MATERIALS INCORPORATED IN THE WORK SHALL CONFORM TO THE LATEST EDITION OF THE CITY OF WINNIPEG "STANDARD CONSTRUCTION SPECIFICATIONS", UNLESS NOTED OTHERWISE.
- LOCATIONS OF UNDERGROUND STRUCTURES AS SHOWN ARE BASED ON THE BEST INFORMATION AVAILABLE, BUT NO GUARANTEE IS GIVEN THAT ALL EXISTING UTILITIES ARE SHOWN OR THAT THE GIVEN LOCATIONS ARE EXACT. CONFIRMATION OF EXISTENCE, EXACT LOCATION AND DEPTH OF ALL SERVICES MUST BE OBTAINED FROM THE INDIVIDUAL UTILITIES BEFORE PROCEEDING WITH CONSTRUCTION.
- LOCATIONS OF PROPERTY LIMITS AND EXISTING AND/OR PROPOSED FEATURES RELATIVE TO THESE LIMITS AS SHOWN DO NOT REPRESENT A LEGAL SURVEY. SBC INC. MAKES NO REPRESENTATION OR GUARANTEE THAT THE PROPERTY LIMIT INFORMATION SHOWN IS ACCURATE, AND ACCEPTS NO RESPONSIBILITY FOR ANY DAMAGES SUFFERED BY ANY THIRD PARTY AS A RESULT OF DECISIONS OR ACTIONS BASED ON THIS DRAWING.
- ALL SURFACES AND ANY EXISTING UTILITIES DAMAGED OR DISTURBED BY CONSTRUCTION SHALL BE RESTORED TO ITS ORIGINAL CONDITION OR BETTER, OR REPLACED, AT THE CONTRACTOR'S EXPENSE.

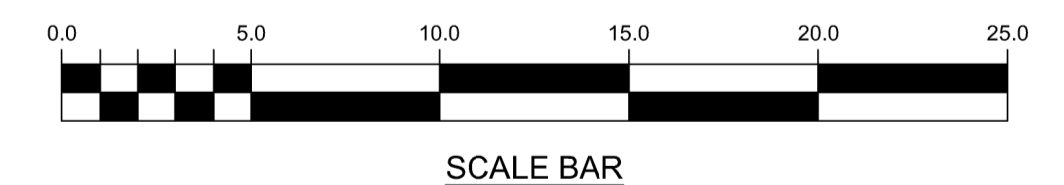
REMOVAL NOTES:

- REMOVE ALL PAVEMENT AND GRASSED AREAS WITHIN THE SHOWN PROPOSED LIMITS OF WORK, AS REQUIRED FOR NEW CONSTRUCTION. CONFIRM LIMITS OF REMOVAL WITH CONTRACT ADMINISTRATOR PRIOR TO COMMENCEMENT OF WORK.
- REMOVE AND SALVAGE EXISTING PAVING STONES WITHIN THE SHOWN PROPOSED LIMITS OF WORK, AS DIRECTED BY THE CONTRACT ADMINISTRATOR. SALVAGED PAVING STONES SHALL BE SORTED TO THE SATISFACTION OF THE CONTRACT ADMINISTRATOR AND DELIVERED TO THE COMMUNITY CENTRE GENERAL MANAGER.
- REMOVE AND SALVAGE EXISTING PARKING CURBS FOR REINSTALLATION IN NEW PARKING LOT.
EXISTING PARKING CURBS = 32
- TEMPORARILY RELOCATE EXISTING CONCRETE BARRICADES AROUND WELL CASING AND REINSTALL AFTER ASPHALT PAVING.
- TEMPORARILY RELOCATE ALL GARBAGE BINS, DONATION BINS AND RECYCLING BINS TO ON-SITE LOCATIONS DESIGNATED BY THE COMMUNITY CENTRE GENERAL MANAGER DURING CONSTRUCTION.

PARKING STALL SUMMARY

- EXISTING:**
- 31 STANDARD PARKING STALLS
 - 2 ACCESSIBLE PARKING STALLS
- PROPOSED:**
- 31 STANDARD PARKING STALLS
 - 2 ACCESSIBLE PARKING STALLS

METRIC
WHOLE NUMBERS INDICATE MILLIMETRES
DECIMALIZED NUMBERS INDICATE METRES



EXISTING	LEGEND	PROPOSED	EXISTING	LEGEND	PROPOSED	EXISTING	LEGEND	PROPOSED
150 WM	WATERMAIN	150 WM	⊕	SURVEY BAR	235.380	GROUND ELEVATION	235.38	LOCATION APPROVED
250 WWS	WASTEWATER	150 WWS	⊕	SIGN	235.38	DITCH ELEVATION	235.38	UNDERGROUND STRUCTURES
300 LDS	LAND DRAINAGE SEWER	300 LDS	⊕	UTILITY POLE	235.400	ROAD ELEVATION	235.400	
⊕	HYDRANT ASSEMBLY	⊕	⊕	UTILITY PEDESTAL		BARRIER CURB		
⊕	GATE VALVE	⊕	⊕	HYDRO		MOUNTABLE CURB		
⊕	CURB STOP	⊕	⊕	GAS		CONCRETE		
⊕	REDUCER	⊕	⊕	MTS		ASPHALT		
⊕	MANHOLE	⊕	⊕	TREE LINE		PAVING STONE		
⊕	CATCH BASIN	⊕	⊕	CULVERT		GRASS		
⊕	TESTHOLE	⊕	⊕	SWALE				
⊕	PROBEHOLE	⊕	⊕	DIRECTION OF FLOW				

DATE: _____
 SUPV. U/G STRUCTURES COMMITTEE
 NOTE:
 LOCATION OF UNDERGROUND STRUCTURES AS SHOWN ARE BASED ON THE BEST INFORMATION AVAILABLE BUT NO GUARANTEE IS GIVEN THAT ALL EXISTING UTILITIES ARE SHOWN OR THAT THE GIVEN LOCATIONS ARE EXACT. CONFIRMATION OF EXISTENCE AND EXACT LOCATION OF ALL SERVICES MUST BE OBTAINED FROM THE INDIVIDUAL UTILITIES BEFORE PROCEEDING WITH CONSTRUCTION.

NO.	REVISIONS	DATE	BY
2	ISSUED FOR BID OPPORTUNITY	17/04/13	JLT
1	DETAIL DESIGN	15/09/16	JLT
0	PRELIMINARY DESIGN	15/08/11	JLT

SBC
 Sison Blackburn Consulting Inc.
 www.SBCinc.ca

DESIGNED BY: JLT
 DRAWN BY: JLT
 HOR. SCALE: 1:200
 VERT. SCALE:
 DATE: AUGUST, 2015

DATE	BY
17/04/13	JLT
15/09/16	JLT
15/08/11	JLT

ENGINEER'S SEAL
 CHECKED BY: RC
 APPROVED BY: RC
 RELEASED FOR CONSTRUCTION
 CONSULTANT DRAWING NO. 15112-C01

THE CITY OF WINNIPEG
 Winnipeg

R.A. STEEN MEMORIAL C.C. PARKING LOT REDEVELOPMENT PROJECT
 EXISTING SITE / REMOVALS PLAN

SHEET 1 OF 3
 CITY DRAWING NO. 280-2017