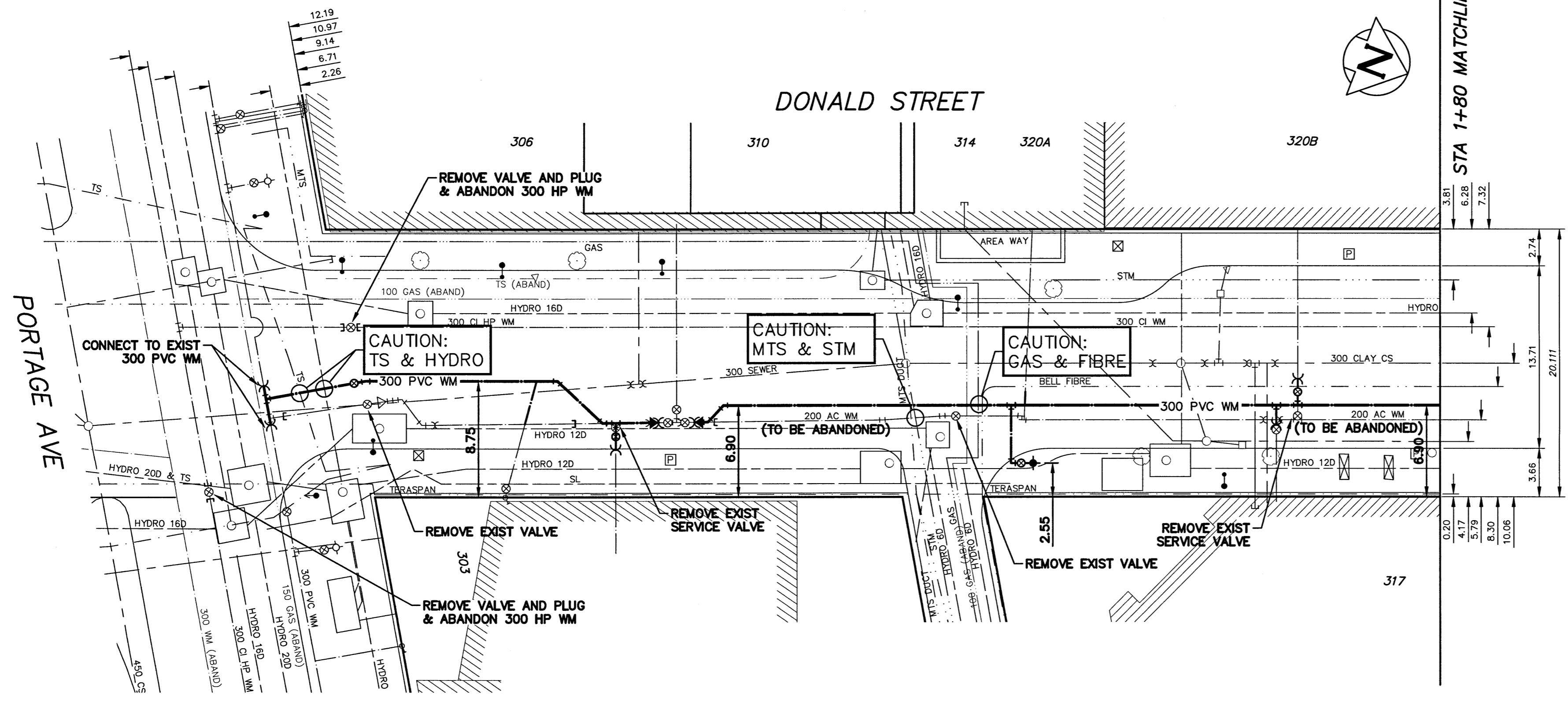


WATER SERVICE INFORMATION

ADDRESS	SIZE (mm)	SIZE (mm)	SHORT & LONG MEASUREMENT	CORP. LOCATION	REMARKS
303 PORTAGE AVE	150	150	9.40 NSL BLDG	OPP S/C	--
COMMERCIAL	CAST IRON	CAST IRON	16.10>NNL PORTAGE	--	--
303 PORTAGE AVE	25	25	--	--	--
COMMERCIAL	COPPER	COPPER	--	--	--
317 DONALD ST	150	150	--	OPP S/C	--
COMMERCIAL	CAST IRON	CAST IRON	67.7>NNL PORTAGE	--	--
320A DONALD ST	25	25	--	--	--
COMMERCIAL	COPPER	COPPER	--	--	--
320B DONALD ST	150	150	14.50 NSL BLDG	OPP S/C	--
COMMERCIAL	CAST IRON	CAST IRON	73.0>NNL PORTAGE	--	--

NOTE: CHAINAGES SHOWN ARE ALONG EAST R OF DONALD STREET

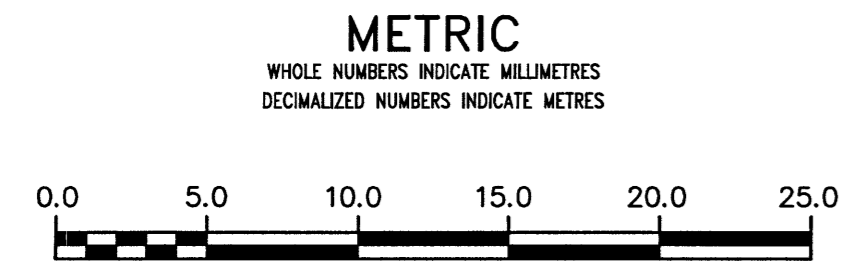


PROPERTY LIMITS DELINEATION

DELINEATION OF PROPERTY LIMITS AS SHOWN ON THIS DWG DOES NOT REPRESENT A "LEGAL SURVEY". KGS GROUP MAKES NO REPRESENTATION OR WARRANTY AS TO THE ACCURACY OF PROPERTY LIMITS DELINEATED ON THIS DWG, NOR ON THE DIMENSIONAL ACCURACY OF DWG FEATURES RELATIVE TO THOSE PROPERTY LIMITS.

NOTE: ALL VALVES TO BE INSTALLED COUNTERCLOCKWISE TO CLOSE

APEGM
Certificate of Authorization
KGS Group
No. 245



WARNING

IF POWER EQUIPMENT OR EXPLOSIVES ARE TO BE USED FOR EXCAVATION ON THIS PROJECT THE CONTRACTOR MUST:

- 1) NOTIFY THE GAS COMPANY OF THE PROPOSED LOCATION OF EXCAVATION.
- 2) TAKE PRECAUTION TO AVOID DAMAGE TO GAS COMPANY INSTALLATIONS.

SEE PROVINCIAL REGULATION 210/72 FOR DETAILS

LOCATION APPROVED UNDERGROUND STRUCTURES

SUPV. U/G STRUCTURES COMMITTEE DATE

NOTE:
LOCATION OF UNDERGROUND STRUCTURES AS SHOWN ARE BASED ON THE BEST INFORMATION AVAILABLE BUT NO GUARANTEE IS GIVEN THAT ALL EXISTING UTILITIES ARE SHOWN OR THAT THE GIVEN LOCATIONS ARE EXACT. CONFIRMATION OF EXISTENCE AND EXACT LOCATION OF ALL UTILITIES MUST BE OBTAINED FROM THE INDIVIDUAL UTILITIES BEFORE PROCEEDING WITH CONSTRUCTION.

B.M. ELEV.

NO.	ISSUED FOR CONSTRUCTION	DATE	BY
0	ISSUED FOR CONSTRUCTION	17/04/27	RBO
NO.	REVISIONS	DATE	BY

KGS GROUP CONSULTING ENGINEERS

DESIGNED BY	TLE	CHECKED BY	SL
DRAWN BY	GEL	APPROVED BY	RBO
SCALE:		RELEASED FOR CONSTRUCTION	
HORIZONTAL	1:250		
VERTICAL	1:50		
DATE	2017 04 26	DATE	4/5/19

ENGINEER'S SEAL
CONSULTANT DRAWING NUMBER
17-0107-002_C02

THE CITY OF WINNIPEG
WATER AND WASTE DEPARTMENT
ENGINEERING DIVISION

2017 WATER MAIN RENEWALS
CONTRACT 8
DONALD STREET
PORTAGE AVENUE TO NOTRE DAME AVENUE
PORTAGE AVENUE TO STA 1+80

SHEET 3 OF 19
CITY DRAWING NUMBER
D-14677