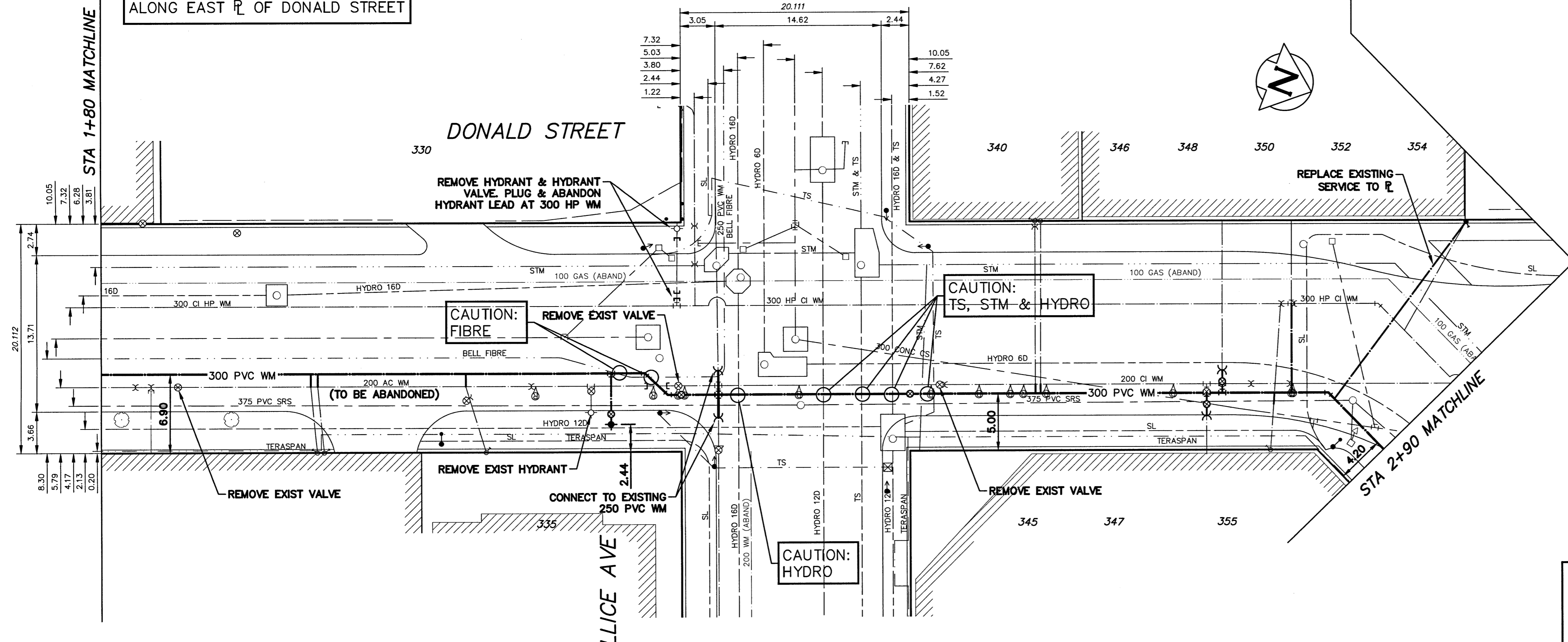


WATER SERVICE INFORMATION

ADDRESS	SIZE (mm) MATERIAL (STREET)	SIZE (mm) MATERIAL (PROP.)	SHORT & LONG MEASUREMENT	CORP. LOCATION	REMARKS
317 DONALD ST COMMERCIAL	20 COPPER	20	-	-	-
317 DONALD ST COMMERCIAL	20 COPPER	20	-	-	-
335 DONALD ST RESIDENTIAL	38 COPPER	38	5.70 NSLL	1.8 S CS	-
340 DONALD ST COMMERCIAL	25 COPPER	25	-	-	-
345 DONALD ST COMMERCIAL	150 CAST IRON	150	26.10>NNL ELLICE	OPP S/C	-
346 DONALD ST RESIDENTIAL	25 COPPER	25	4.00 SNLL	OPP S/C	-
350 DONALD ST COMMERCIAL	100 CAST IRON	100	18.40 NSL BLDG	OPP S/C	-
352 DONALD ST COMMERCIAL	20 COPPER	20	-	-	-
354 DONALD ST RESIDENTIAL	12 COPPER	-	0.30>NNL OF N WING OF HSE	5.5 S OF S/C	RENEW TO PL WITH 20 COPPER POSSIBLE LEAD SERVICE
355 DONALD ST COMMERCIAL	20 COPPER	20	48.92>NNL OF ELLICE	-	-

• SERVICES TO BE RENEWED TO R. ALL OTHERS TO BE RECONNECTED

NOTE: CHAINAGES SHOWN ARE ALONG EAST R OF DONALD STREET

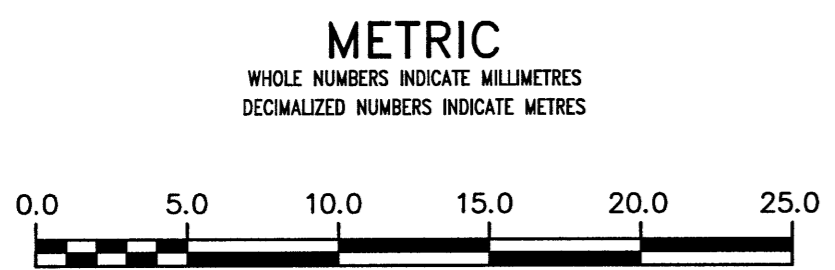


PROPERTY LIMITS DELINEATION

DELINEATION OF PROPERTY LIMITS AS SHOWN ON THIS DWG DOES NOT REPRESENT A "LEGAL SURVEY". KGS GROUP MAKES NO REPRESENTATION OR WARRANTY AS TO THE ACCURACY OF PROPERTY LIMITS DELINEATED ON THIS DWG, NOR ON THE DIMENSIONAL ACCURACY OF DWG FEATURES RELATIVE TO THOSE PROPERTY LIMITS.

NOTE: ALL VALVES TO BE INSTALLED COUNTERCLOCKWISE TO CLOSE

APEGM
 Certificate of Authorization
 KGS Group
 No. 245



WARNING
 IF POWER EQUIPMENT OR EXPLOSIVES ARE TO BE USED FOR EXCAVATION ON THIS PROJECT THE CONTRACTOR MUST:
 1) NOTIFY THE GAS COMPANY OF THE PROPOSED LOCATION OF EXCAVATION.
 2) TAKE PRECAUTION TO AVOID DAMAGE TO GAS COMPANY INSTALLATIONS.
 SEE PROVINCIAL REGULATION 21072 FOR DETAILS

LOCATION APPROVED UNDERGROUND STRUCTURES
 SUPV. U/G STRUCTURES COMMITTEE DATE
 NOTE:
 LOCATION OF UNDERGROUND STRUCTURES AS SHOWN ARE BASED ON THE BEST INFORMATION AVAILABLE BUT NO GUARANTEE IS GIVEN THAT ALL EXISTING UTILITIES ARE SHOWN OR THAT THE GIVEN LOCATIONS ARE EXACT. CONFIRMATION OF EXISTENCE AND EXACT LOCATION OF ALL SERVICES MUST BE OBTAINED FROM THE INDIVIDUAL UTILITIES BEFORE PROCEEDING WITH CONSTRUCTION.

B.M. ELEV.	NO.	ISSUED FOR CONSTRUCTION	DATE	BY
	0	ISSUED FOR CONSTRUCTION	17/04/27	RBO
		REVISIONS		

KGS GROUP CONSULTING ENGINEERS

DESIGNED BY	TLE	CHECKED BY	LL
DRAWN BY	GEL	APPROVED BY	RBO
HORIZONTAL SCALE:	1:250	RELEASED FOR CONSTRUCTION	X5
VERTICAL SCALE:	1:50	DATE	4/27/17

PLOT DATE: 2017 04 26

ENGINEER'S SEAL

 CONSULTANT DRAWING NUMBER
 17-0107-002_C03

THE CITY OF WINNIPEG
 WATER AND WASTE DEPARTMENT
 ENGINEERING DIVISION

2017 WATER MAIN RENEWALS
 CONTRACT 8
DONALD STREET
 PORTAGE AVENUE TO NOTRE DAME AVENUE
 STA 1+80 TO STA 2+90

SHEET 4 OF 19
 CITY DRAWING NUMBER
 D-14678