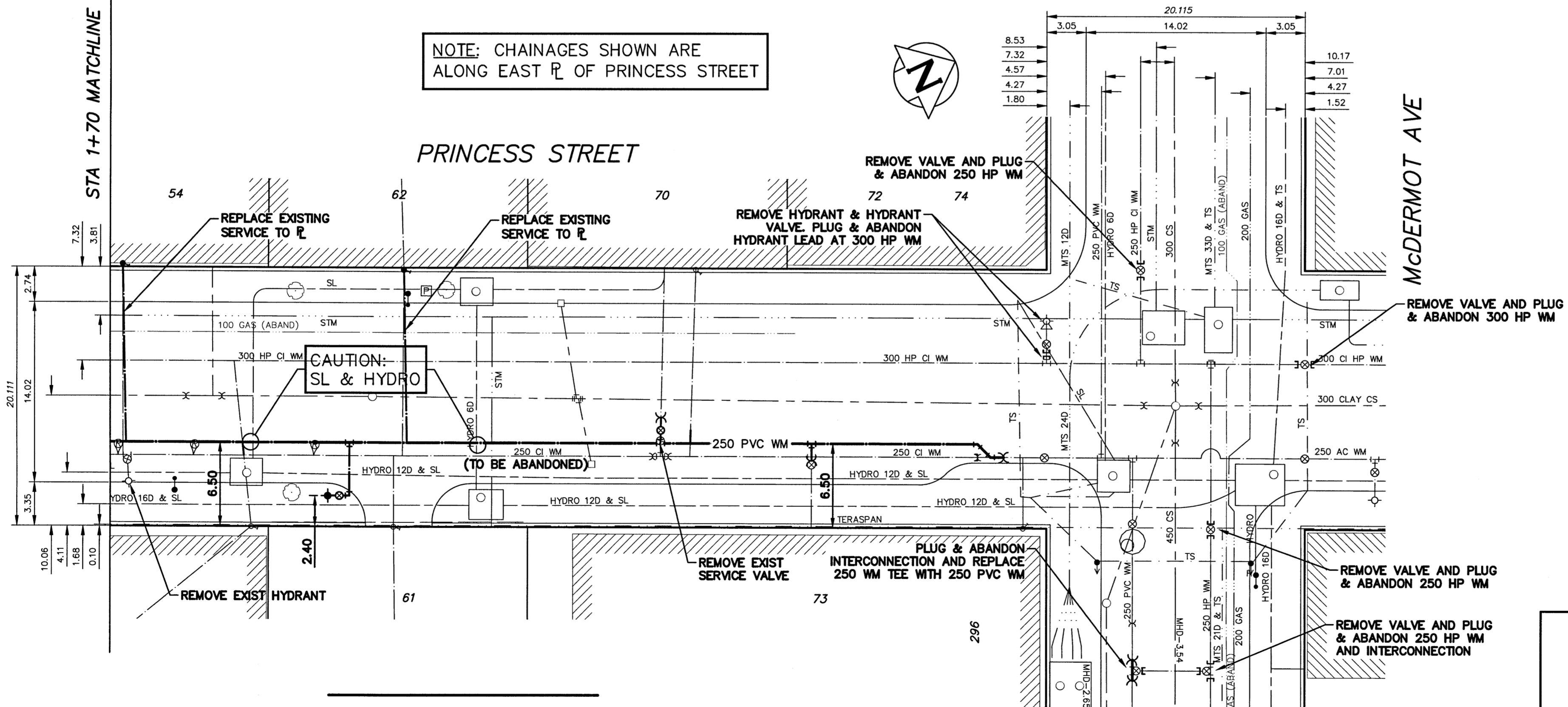


WATER SERVICE INFORMATION

ADDRESS	SIZE (mm) MATERIAL (STREET)	SIZE (mm) MATERIAL (PROP.)	SHORT & LONG MEASUREMENT	CORP. LOCATION	REMARKS
54 PRINCESS ST	20 LEAD	20 COPPER	OPP CENTER WINDOW 54	OPP S/C	RENEW TO PL WITH 20 COPPER POSSIBLE LEAD SERVICE
55 PRINCESS ST	50 COPPER	50 COPPER	71.02 NML NOTRE DAME	-	-
62 PRINCESS ST	20 LEAD	20 COPPER	9.75 SNL BLDG	SAME AS S/C	RENEW TO PL WITH 20 COPPER POSSIBLE LEAD SERVICE
70 PRINCESS ST	25 PVC	25 COPPER	49.99 SSL OF MCDERMOT	0.5 S OF S/C	-
70 PRINCESS ST	150 PVC	150 COPPER	12.95 NSL OF BUILDING	-	-
70 PRINCESS ST	150 PVC	150 COPPER	27.28 SSL OF MCDERMOT	-	-
73 PRINCESS ST	150 CAST IRON	150 CAST IRON	9.83 SNL BLDG	OPP S/C	-
73 PRINCESS ST	150 CAST IRON	150 CAST IRON	30.00 SSL OF MCDERMOT	OPP S/C	-
COMMERCIAL	150 CAST IRON	150 CAST IRON	17.80 SNL BLDG	OPP S/C	-
COMMERCIAL	150 CAST IRON	150 CAST IRON	18.30 SSL OF MCDERMOT	OPP S/C	-

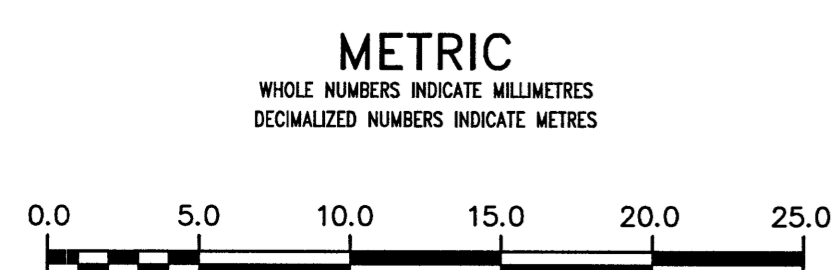
* SERVICES TO BE RENEWED TO R. ALL OTHERS TO BE RECONNECTED



NOTE: CHAINAGES SHOWN ARE ALONG EAST R OF PRINCESS STREET

PROPERTY LIMITS DELINEATION
 DELINEATION OF PROPERTY LIMITS AS SHOWN ON THIS DWG DOES NOT REPRESENT A "LEGAL SURVEY". KGS GROUP MAKES NO REPRESENTATION OR WARRANTY AS TO THE ACCURACY OF PROPERTY LIMITS DELINEATED ON THIS DWG, NOR ON THE DIMENSIONAL ACCURACY OF DWG FEATURES RELATIVE TO THOSE PROPERTY LIMITS.

NOTE: ALL VALVES TO BE INSTALLED COUNTERCLOCKWISE TO CLOSE



WARNING
 IF POWER EQUIPMENT OR EXPLOSIVES ARE TO BE USED FOR EXCAVATION ON THIS PROJECT THE CONTRACTOR MUST:
 1) NOTIFY THE GAS COMPANY OF THE PROPOSED LOCATION OF EXCAVATION.
 2) TAKE PRECAUTION TO AVOID DAMAGE TO GAS COMPANY INSTALLATIONS.
 SEE PROVINCIAL REGULATION 210/72 FOR DETAILS

LOCATION APPROVED UNDERGROUND STRUCTURES
 SUPV. U/G STRUCTURES COMMITTEE DATE
 NOTE:
 LOCATION OF UNDERGROUND STRUCTURES AS SHOWN ARE BASED ON THE BEST INFORMATION AVAILABLE BUT NO GUARANTEE IS GIVEN THAT ALL EXISTING UTILITIES ARE SHOWN OR THAT THE GIVEN LOCATIONS ARE EXACT. CONFIRMATION OF EXISTENCE AND EXACT LOCATION OF ALL SERVICES MUST BE OBTAINED FROM THE INDIVIDUAL UTILITIES BEFORE PROCEEDING WITH CONSTRUCTION.

B.M. ELEV.	NO.	ISSUED FOR CONSTRUCTION	DATE	BY
	0	ISSUED FOR CONSTRUCTION	17/04/27	RBO

DESIGNED BY	TLE	CHECKED BY	SL
DRAWN BY	GEL	APPROVED BY	RBO
SCALE:	HORIZONTAL 1:250	RELEASED FOR CONSTRUCTION	4/27/10
	VERTICAL 1:50	DATE	2017 04 26

APEGM
 Certificate of Authorization
 KGS Group
 No. 245

ENGINEER'S SEAL

 CONSULTANT DRAWING NUMBER
 17-0107-002_C06

THE CITY OF WINNIPEG
 WATER AND WASTE DEPARTMENT
 ENGINEERING DIVISION

2017 WATER MAIN RENEWALS
 CONTRACT 8
 PRINCESS STREET
 NOTRE DAME AVENUE TO McDERMOT AVENUE
 STA 1+70 TO McDERMOT AVENUE

SHEET 7 OF 19
 CITY DRAWING NUMBER
 D-14681