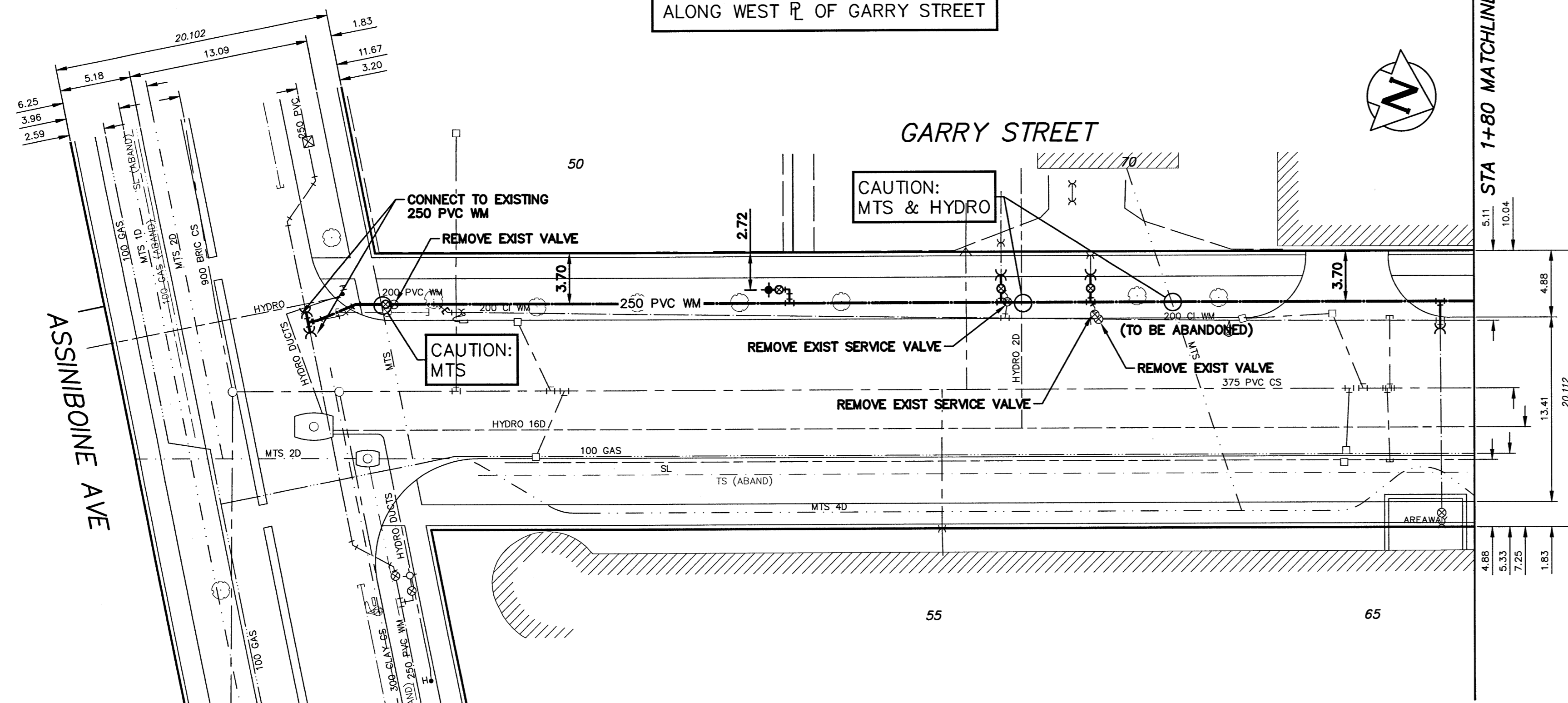


NOTE: CHAINAGES SHOWN ARE ALONG WEST R OF GARRY STREET



WATER SERVICE INFORMATION

ADDRESS	SIZE (mm) MATERIAL (STREET)	SIZE (mm) MATERIAL (PROP.)	SHORT & LONG MEASUREMENT	CORP. LOCATION	REMARKS
65 GARRY ST RESIDENTIAL	100 CAST IRON	100 CAST IRON	73.6 NNL ASSINIBOINE	OPP S/C	-
70 GARRY ST RESIDENTIAL	150 CAST IRON	150 CAST IRON	2.67 SSL BLDG	OPP S/C	-
70 GARRY ST RESIDENTIAL	150 CAST IRON	150 CAST IRON	45.7 NNL ASSINIBOINE	OPP S/C	-
70 GARRY ST RESIDENTIAL	150 CAST IRON	150 CAST IRON	3.83 NNL BLDG	OPP S/C	-
70 GARRY ST RESIDENTIAL	150 CAST IRON	150 CAST IRON	52.1 NNL ASSINIBOINE	OPP S/C	-

PROPERTY LIMITS DELINEATION

DELINEATION OF PROPERTY LIMITS AS SHOWN ON THIS DWG DOES NOT REPRESENT A "LEGAL SURVEY". KGS GROUP MAKES NO REPRESENTATION OR WARRANTY AS TO THE ACCURACY OF PROPERTY LIMITS DELINEATED ON THIS DWG, NOR ON THE DIMENSIONAL ACCURACY OF DWG FEATURES RELATIVE TO THOSE PROPERTY LIMITS.

NOTE: ALL VALVES TO BE INSTALLED COUNTERCLOCKWISE TO CLOSE

APEGM
Certificate of Authorization
KGS Group
No. 245

ENGINEER'S SEAL
R.B. OFFMAN
Member
2017
PROFESSIONAL ENGINEER

THE CITY OF WINNIPEG
WATER AND WASTE DEPARTMENT
ENGINEERING DIVISION
2017 WATER MAIN RENEWALS
CONTRACT 8
GARRY STREET
ASSINIBOINE AVENUE TO BROADWAY
ASSINIBOINE AVENUE TO STA 1+80
SHEET 16 OF 19
CITY DRAWING NUMBER
D-14690

WARNING
IF POWER EQUIPMENT OR EXPLOSIVES ARE TO BE USED FOR EXCAVATION ON THIS PROJECT THE CONTRACTOR MUST:
1) NOTIFY THE GAS COMPANY OF THE PROPOSED LOCATION OF EXCAVATION.
2) TAKE PRECAUTION TO AVOID DAMAGE TO GAS COMPANY INSTALLATIONS.
SEE PROVINCIAL REGULATION 210/72 FOR DETAILS

LOCATION APPROVED
UNDERGROUND STRUCTURES
SUPV. U/G STRUCTURES COMMITTEE DATE
NOTE:
LOCATION OF UNDERGROUND STRUCTURES AS SHOWN ARE BASED ON THE BEST INFORMATION AVAILABLE BUT NO GUARANTEE IS GIVEN THAT ALL EXISTING UTILITIES ARE SHOWN OR THAT THE GIVEN LOCATIONS ARE EXACT. CONFIRMATION OF EXISTENCE AND EXACT LOCATION OF ALL SERVICES MUST BE OBTAINED FROM THE INDIVIDUAL UTILITIES BEFORE PROCEEDING WITH CONSTRUCTION.

NO.	ISSUED FOR CONSTRUCTION	DATE	BY
0	ISSUED FOR CONSTRUCTION	17/04/27	RBO
	REVISIONS	DATE	BY

KGS GROUP
CONSULTING ENGINEERS
DESIGNED BY: TLE
CHECKED BY: [Signature]
DRAWN BY: GEL
APPROVED BY: [Signature]
SCALE: HORIZONTAL 1:250, VERTICAL 1:50
DATE: 2017 04 26
DATE: 4/27/17

