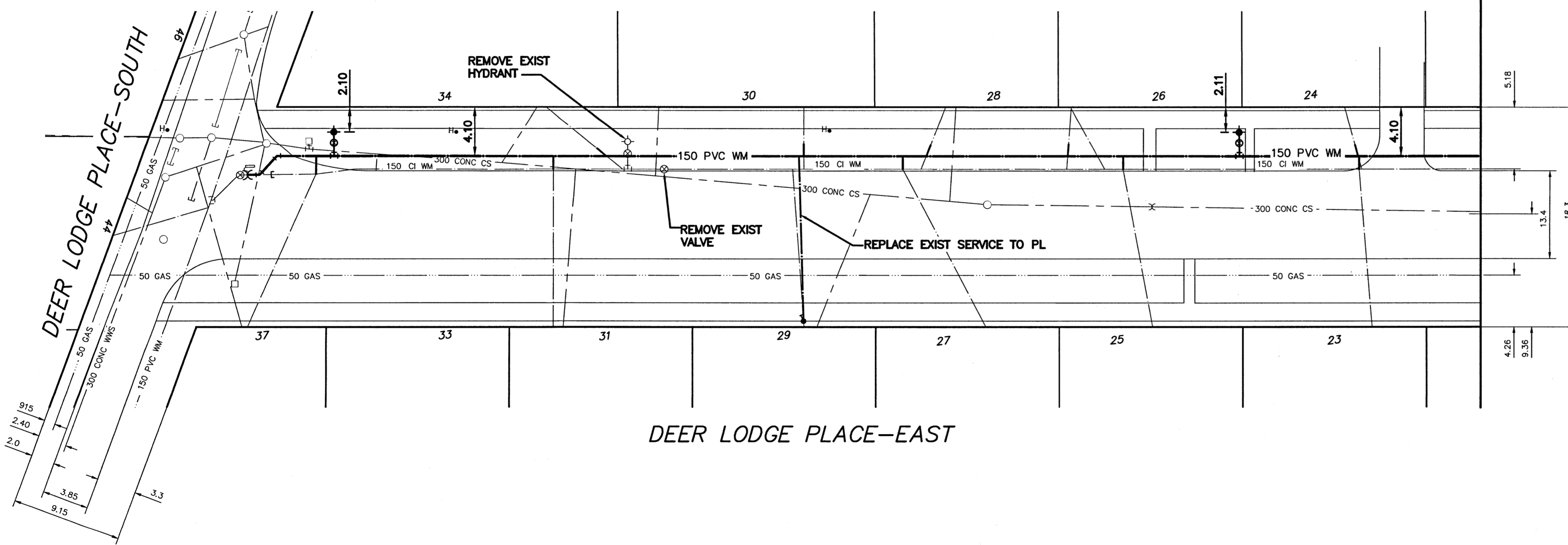


WATER SERVICE INFORMATION

| ADDRESS | SIZE (mm) MATERIAL (STREET) | SIZE (mm) MATERIAL (PROP.) | SHORT & LONG MEASUREMENT | CORP. LOCATION | REMARKS |
|--------------------------------|-----------------------------|----------------------------|--------------------------|---------------------------------|--|
| 26 DEER LODGE PL RESIDENTIAL | 20 COPPER | 12 COPPER | 1.0 NSL | 0.3 S OF C/S | - |
| 28 DEER LODGE PL RESIDENTIAL | - | - | 2.4 NSS BLDG | 24.4 N 2ND HYD S OF PORTAGE | - |
| 34 DEER LODGE PL RESIDENTIAL | 20 COPPER | 12 LEAD | 3.57 S NS BLDG | OPP HYD | - |
| 37 DEER LODGE PL RESIDENTIAL | - | - | 4.57 S NS BLDG | 25.9 S 2ND HYD S OF PORTAGE | - |
| 33 DEER LODGE PL RESIDENTIAL | - | - | 0.67 SNS | - | - |
| * 29 DEER LODGE PL RESIDENTIAL | 12 LEAD | 20 COPPER | 3.96 N OF S | 13.7 N 2ND HYD S OF PORTAGE | REPLACE TO PL WITH 20 COPPER POSSIBLE LEAD SERVICE |
| 23 DEER LODGE PL RESIDENTIAL | 20 COPPER | 20 LEAD | 2.9 N SS BLDG | 1.8 N SS HOUSE | - |
| 25 DEER LODGE PL RESIDENTIAL | - | - | 3.96 N OF S | 41.15 N 2ND HYD S OF PORTAGE | - |
| 27 DEER LODGE PL RESIDENTIAL | - | - | 4.4 S OF N SIDE | 22.9 N 2ND HYD S OF PORTAGE | - |
| 31 DEER LODGE PL RESIDENTIAL | - | - | 3.66 N OF S SIDE | OPP S/C | - |
| 30 DEER LODGE PL RESIDENTIAL | 20 COPPER | 12 LEAD | 4.57 S N/L HSE | OPP S/C | - |
| 24 DEER LODGE PL RESIDENTIAL | 20 COPPER | 12 LEAD | 3.05 S OF N | 60.96 N OF 2ND HYD S OF PORTAGE | - |

* SERVICES TO BE RENEWED TO P. ALL OTHERS TO BE RECONNECTED

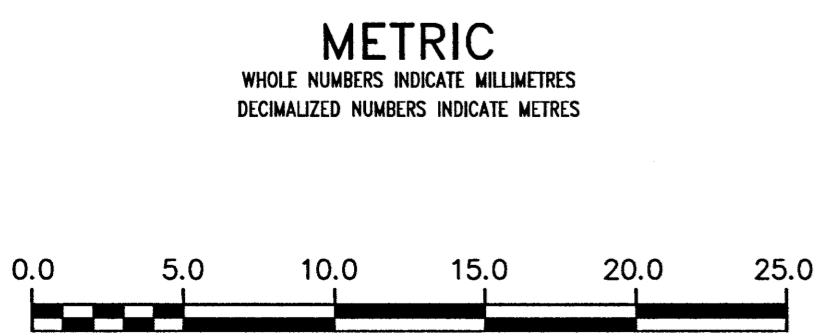
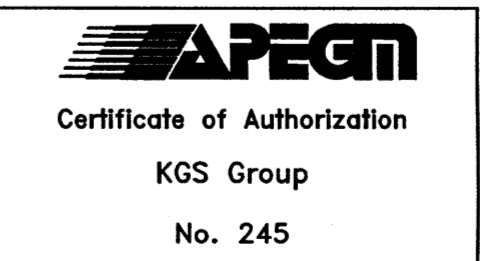
NOTE: CHAINAGES SHOWN ARE ALONG W. R. OF DEER LODGE PLACE-EAST



PROPERTY LIMITS DELINEATION

DELINEATION OF PROPERTY LIMITS AS SHOWN ON THIS DWG DOES NOT REPRESENT A "LEGAL SURVEY". KGS GROUP MAKES NO REPRESENTATION OR WARRANTY AS TO THE ACCURACY OF PROPERTY LIMITS DELINEATED ON THIS DWG, NOR ON THE DIMENSIONAL ACCURACY OF DWG FEATURES RELATIVE TO THOSE PROPERTY LIMITS.

NOTE: ALL VALVES TO BE INSTALLED COUNTERCLOCKWISE TO CLOSE



WARNING
IF POWER EQUIPMENT OR EXPLOSIVES ARE TO BE USED FOR EXCAVATION ON THIS PROJECT THE CONTRACTOR MUST:
1) NOTIFY THE GAS COMPANY OF THE PROPOSED LOCATION OF EXCAVATION.
2) TAKE PRECAUTION TO AVOID DAMAGE TO GAS COMPANY INSTALLATIONS.
SEE PROVINCIAL REGULATION 210/72 FOR DETAILS

LOCATION APPROVED UNDERGROUND STRUCTURES
SUPV. U/G STRUCTURES COMMITTEE DATE
NOTE:
LOCATION OF UNDERGROUND STRUCTURES AS SHOWN ARE BASED ON THE BEST INFORMATION AVAILABLE BUT NO GUARANTEE IS GIVEN THAT ALL EXISTING UTILITIES ARE SHOWN OR THAT THE GIVEN LOCATIONS ARE EXACT. CONFIRMATION OF EXISTENCE AND EXACT LOCATION OF ALL SERVICES MUST BE OBTAINED FROM THE INDIVIDUAL UTILITIES BEFORE PROCEEDING WITH CONSTRUCTION.

| B.M. ELEV. | NO. | ISSUED FOR CONSTRUCTION | DATE | T.L.E. | BY |
|------------|-----|-------------------------|----------|--------|----|
| | 0 | ISSUED FOR CONSTRUCTION | 17/05/17 | T.L.E. | |
| | | REVISIONS | DATE | | |

KGS GROUP CONSULTING ENGINEERS

DESIGNED BY: T.L.E.
CHECKED BY: [Signature]
DRAWN BY: D.M.W.
APPROVED BY: [Signature]
SCALE: HORIZONTAL 1:250, VERTICAL 1:50
RELEASED FOR CONSTRUCTION: [Signature] 5/17/17
DATE: 2017 05 17

ENGINEER'S SEAL
CONSULTANT DRAWING NUMBER: 17-0107-003_C02

THE CITY OF WINNIPEG WATER AND WASTE DEPARTMENT ENGINEERING DIVISION

2017 WATER MAIN RENEWALS (CONTRACT 11)
DEER LODGE PLACE EAST
DEER LODGE PLACE SOUTH TO PORTAGE AVENUE STA 1+00 TO STA 2+00

SHEET 3 OF 17
CITY DRAWING NUMBER: D-14760