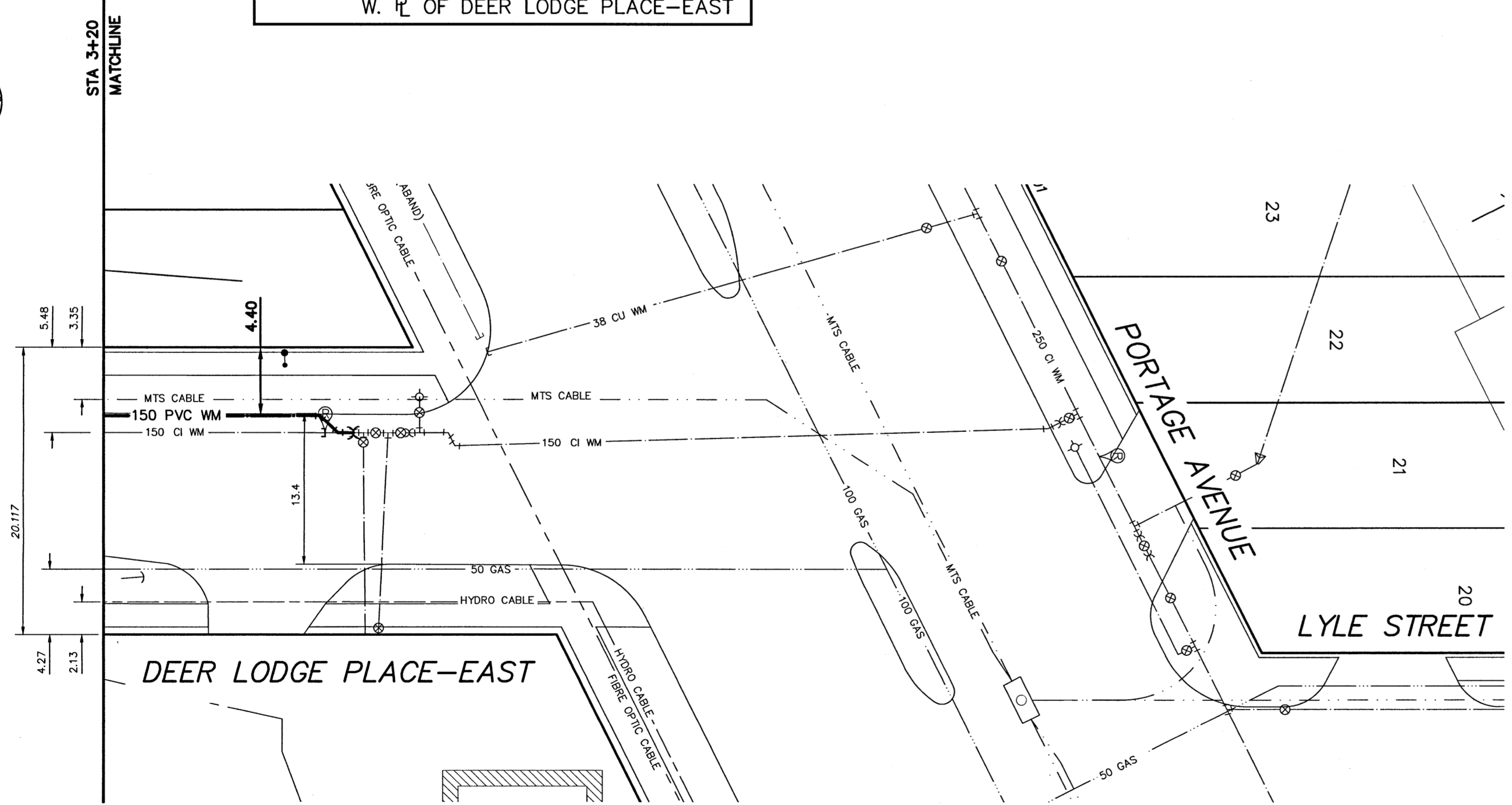


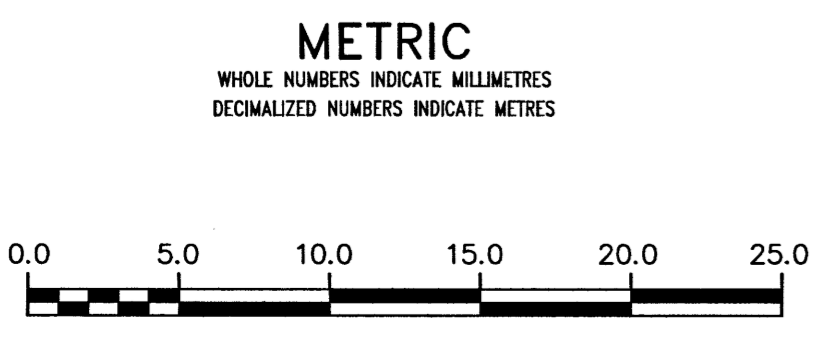
NOTE: CHAINAGES SHOWN ARE ALONG  
W. P. OF DEER LODGE PLACE-EAST



PROPERTY LIMITS DELINEATION  
DELINEATION OF PROPERTY LIMITS AS SHOWN ON THIS DWG DOES NOT REPRESENT A "LEGAL SURVEY". KGS GROUP MAKES NO REPRESENTATION OR WARRANTY AS TO THE ACCURACY OF PROPERTY LIMITS DELINEATED ON THIS DWG, NOR ON THE DIMENSIONAL ACCURACY OF DWG FEATURES RELATIVE TO THOSE PROPERTY LIMITS.

NOTE: ALL VALVES TO BE INSTALLED COUNTERCLOCKWISE TO CLOSE

**APEGN**  
Certificate of Authorization  
KGS Group  
No. 245



**WARNING**  
IF POWER EQUIPMENT OR EXPLOSIVES ARE TO BE USED FOR EXCAVATION ON THIS PROJECT THE CONTRACTOR MUST:  
1) NOTIFY THE GAS COMPANY OF THE PROPOSED LOCATION OF EXCAVATION.  
2) TAKE PRECAUTION TO AVOID DAMAGE TO GAS COMPANY INSTALLATIONS.  
SEE PROVINCIAL REGULATION 210/72 FOR DETAILS

**LOCATION APPROVED UNDERGROUND STRUCTURES**  
SUPV. U/G STRUCTURES COMMITTEE DATE  
NOTE:  
LOCATION OF UNDERGROUND STRUCTURES AS SHOWN ARE BASED ON THE BEST INFORMATION AVAILABLE BUT NO GUARANTEE IS GIVEN THAT ALL EXISTING UTILITIES ARE SHOWN OR THAT THE GIVEN LOCATIONS ARE EXACT. CONFIRMATION OF EXISTENCE AND EXACT LOCATION OF ALL UTILITIES MUST BE OBTAINED FROM THE INDIVIDUAL UTILITIES BEFORE PROCEEDING WITH CONSTRUCTION.

B.M.	ELEV.	NO.	REVISIONS	DATE	BY
		0	ISSUED FOR CONSTRUCTION	17/05/17	T.L.E.

<b>KGS GROUP</b> CONSULTING ENGINEERS		DESIGNED BY	T.L.E.	CHECKED BY	<i>LA</i>
		DRAWN BY	D.M.W.	APPROVED BY	<i>X150</i>
		SCALE:		RELEASED FOR CONSTRUCTION	<i>X150</i>
		HORIZONTAL	1:250	DATE	2017 05 17
VERTICAL	1:50	DATE	05/19/18		

ENGINEER'S SEAL  
**R.B. OFFMAN**  
REGISTERED PROFESSIONAL ENGINEER  
CONSULTANT DRAWING NUMBER  
17-0107-003\_C04

**THE CITY OF WINNIPEG**  
WATER AND WASTE DEPARTMENT  
ENGINEERING DIVISION

2017 WATER MAIN RENEWALS  
(CONTRACT 11)  
**DEER LODGE PLACE EAST**  
DEER LODGE PLACE SOUTH TO PORTAGE AVENUE  
STA 3+20 TO STA 3+75

SHEET **5** OF **17**  
CITY DRAWING NUMBER  
**D-14762**