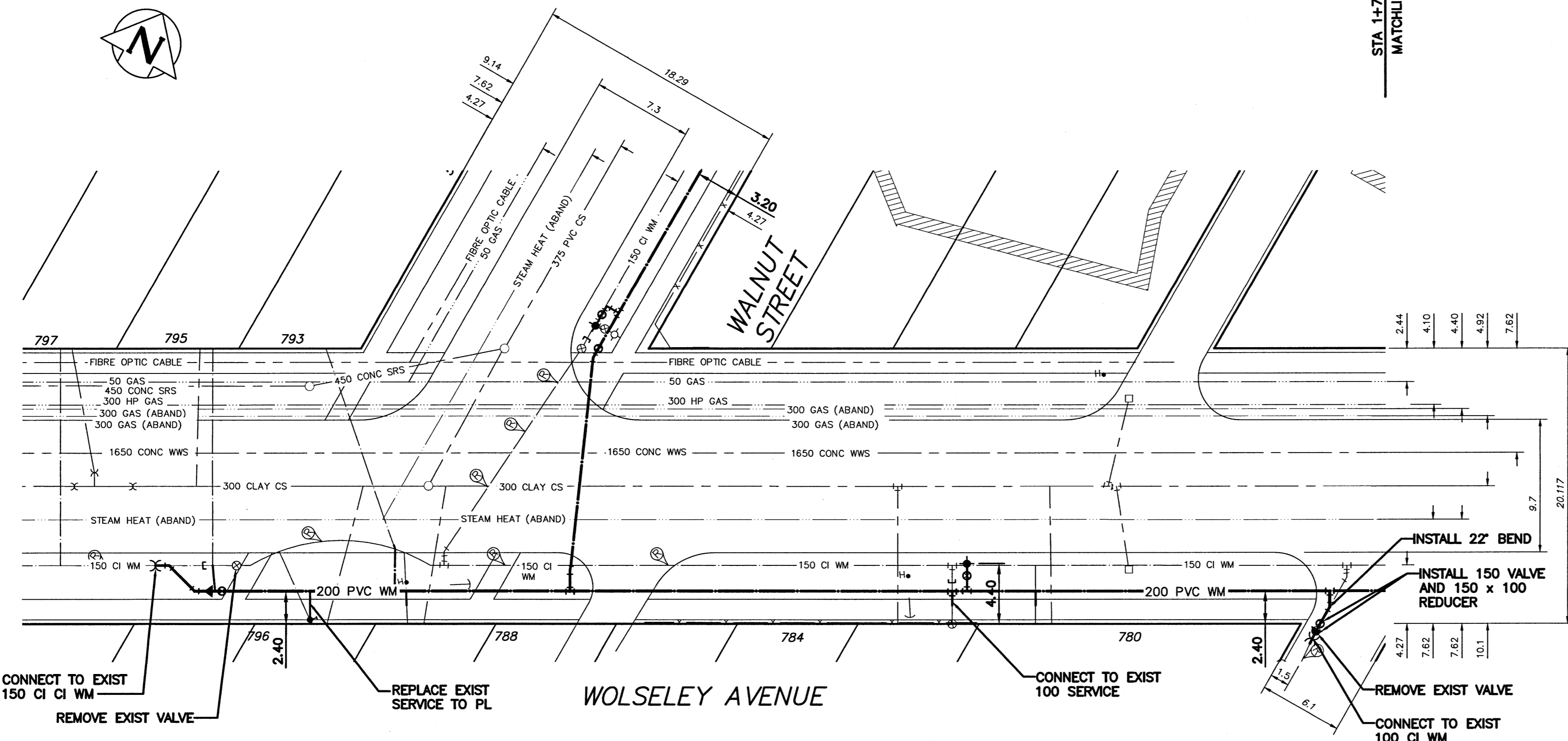


WATER SERVICE INFORMATION					
ADDRESS	SIZE (mm) MATERIAL (STREET)	SIZE (mm) MATERIAL (PROP.)	SHORT & LONG MEASUREMENT	CORP. LOCATION	REMARKS
795 WOLSELEY RESIDENTIAL	20 COPPER	20 COPPER	0.46 EEL HSE	OPP S/C	-
793 WOLSELEY RESIDENTIAL	20 COPPER	20 COPPER	9.45 WML WALNUT	-	-
796 WOLSELEY RESIDENTIAL	25 COPPER	25 COPPER	1.68 WEL HSE	-	-
788 WOLSELEY RESIDENTIAL	50 COPPER	50 COPPER	2.29 EWL WALNUT	2.90 EWL WALNUT	-
784 WOLSELEY RESIDENTIAL	25 LEAD	25 LEAD	4.27 WEL HSE	-	-
780 WOLSELEY RESIDENTIAL	25 COPPER	25 COPPER	6.7 EWL WALNUT	3.96 EWL WALNUT	REPLACE TO PL WITH 25 COPPER POSSIBLE LEAD SERVICE
784 WOLSELEY RESIDENTIAL	50 COPPER	50 COPPER	3.0 WML BLDG	0.3 W S/C	-
780 WOLSELEY RESIDENTIAL	25 COPPER	25 COPPER	13.11 EWL WALNUT	-	-
780 WOLSELEY RESIDENTIAL	25 COPPER	25 COPPER	4.27 EWL BLDG	OPP S/C	-
780 WOLSELEY RESIDENTIAL	25 COPPER	25 COPPER	14.63 WEL BLDG	-	-

\* SERVICES TO BE RENEWED TO PL. ALL OTHERS TO BE RECONNECTED

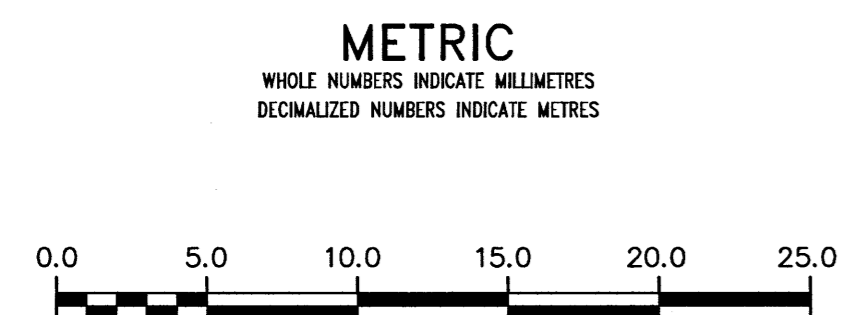
NOTE: CHAINAGES SHOWN ARE ALONG S. R. OF WOLSELEY AVENUE



PROPERTY LIMITS DELINEATION  
 DELINEATION OF PROPERTY LIMITS AS SHOWN ON THIS DWG DOES NOT REPRESENT A "LEGAL SURVEY". KGS GROUP MAKES NO REPRESENTATION OR WARRANTY AS TO THE ACCURACY OF PROPERTY LIMITS DELINEATED ON THIS DWG, NOR ON THE DIMENSIONAL ACCURACY OF DWG FEATURES RELATIVE TO THOSE PROPERTY LIMITS.

NOTE: ALL VALVES TO BE INSTALLED COUNTERCLOCKWISE TO CLOSE

**APEGN**  
 Certificate of Authorization  
 KGS Group  
 No. 245



**WARNING**  
 IF POWER EQUIPMENT OR EXPLOSIVES ARE TO BE USED FOR EXCAVATION ON THIS PROJECT THE CONTRACTOR MUST:  
 1) NOTIFY THE GAS COMPANY OF THE PROPOSED LOCATION OF EXCAVATION.  
 2) TAKE PRECAUTION TO AVOID DAMAGE TO GAS COMPANY INSTALLATIONS.  
 SEE PROVINCIAL REGULATION 210/72 FOR DETAILS

**LOCATION APPROVED UNDERGROUND STRUCTURES**  
 SUPV. U/G STRUCTURES COMMITTEE DATE  
 NOTE:  
 LOCATION OF UNDERGROUND STRUCTURES AS SHOWN ARE BASED ON THE BEST INFORMATION AVAILABLE BUT NO GUARANTEE IS GIVEN THAT ALL EXISTING UTILITIES ARE SHOWN OR THAT THE GIVEN LOCATIONS ARE EXACT. CONFIRMATION OF EXISTENCE AND EXACT LOCATION OF ALL UTILITIES MUST BE OBTAINED FROM THE INDIVIDUAL UTILITIES BEFORE PROCEEDING WITH CONSTRUCTION.

B.M. ELEV.	NO.	ISSUED FOR CONSTRUCTION	DATE	BY
	0	ISSUED FOR CONSTRUCTION	17/05/17	T.L.E.

**KGS GROUP CONSULTING ENGINEERS**  
 DESIGNED BY T.L.E.  
 CHECKED BY [Signature]  
 DRAWN BY D.M.W.  
 APPROVED BY [Signature]  
 SCALE: HORIZONTAL 1:250, VERTICAL 1:50  
 RELEASED FOR CONSTRUCTION  
 DATE 5/17/17  
 PLOT DATE: 2017 05 17

ENGINEER'S SEAL  
**R.B. OTTMAN**  
 REGISTERED PROFESSIONAL ENGINEER  
 CONSULTANT DRAWING NUMBER  
 17-0107-003\_C13

**THE CITY OF WINNIPEG**  
 WATER AND WASTE DEPARTMENT  
 ENGINEERING DIVISION  
 2017 WATER MAIN RENEWALS (CONTRACT 11)  
**WOLSELEY AVENUE**  
 WALNUT STREET TO MARYLAND STREET  
 STA 0+75 TO STA 1+75  
 SHEET 14 OF 17  
 CITY DRAWING NUMBER  
 D-14771