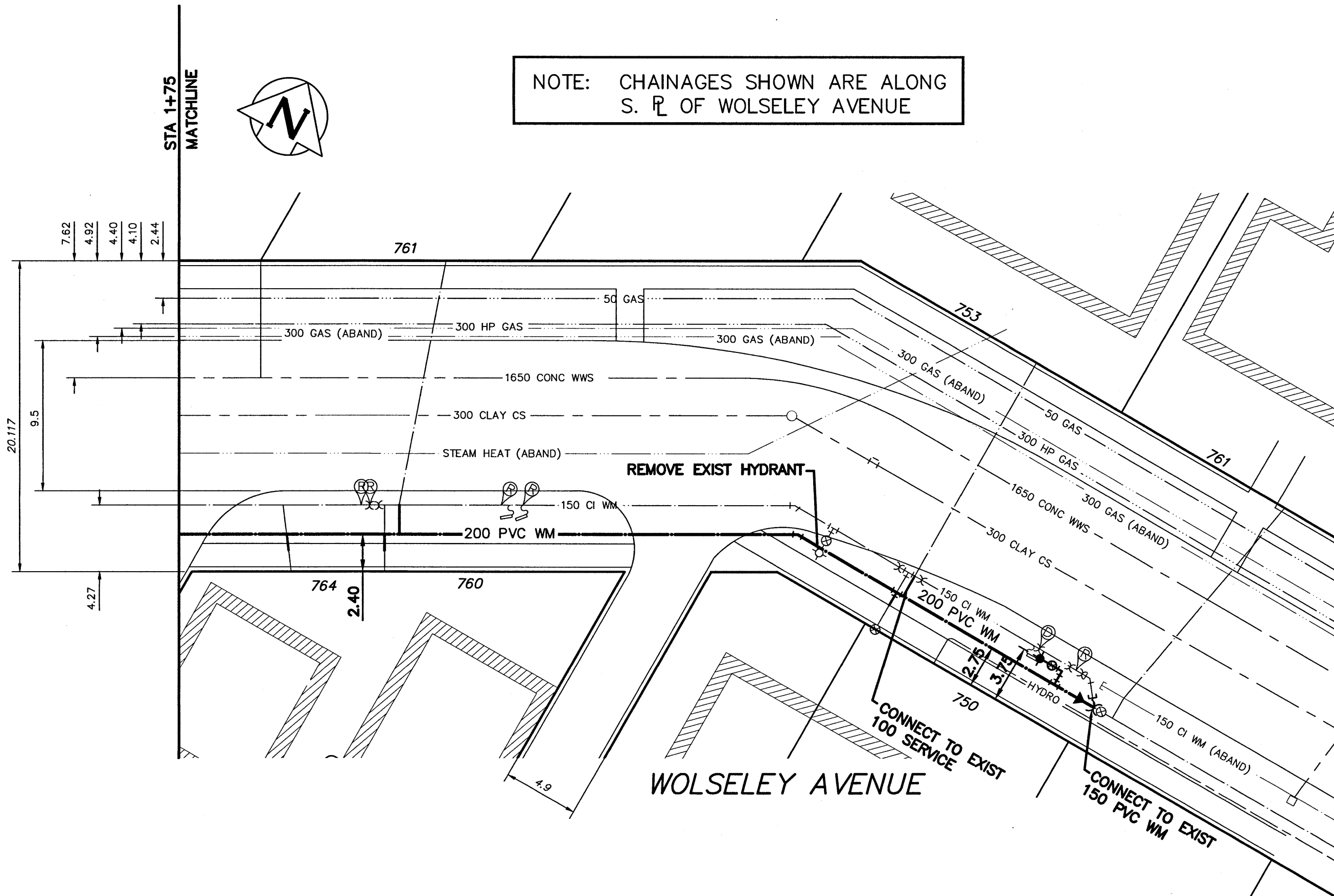


WATER SERVICE INFORMATION					
ADDRESS	SIZE (mm) MATERIAL (STREET)	SIZE (mm) MATERIAL (PROP.)	SHORT & LONG MEASUREMENT	CORP. LOCATION	REMARKS
781 WOLSELEY RESIDENTIAL	38 COPPER	38 COPPER	25.9 EWL BLDG	3.5 W OF CS	-
784 WOLSELEY RESIDENTIAL	25 COPPER	25 LEAD	29.0 W 1ST HYD W MARYLAND	0.6 W OF CS	-
760 RESIDENTIAL	25 COPPER	25 LEAD	28.7 W 1ST HYD W MARYLAND	OPP CS	-
753 RESIDENTIAL	25 COPPER	25 LEAD	2.4 WEL BLOCK	OPP CS	-
750 WOLSELEY RESIDENTIAL	-	-	95.1 WML MARYLAND	-	-

* SERVICES TO BE RENEWED TO R. ALL OTHERS TO BE RECONNECTED

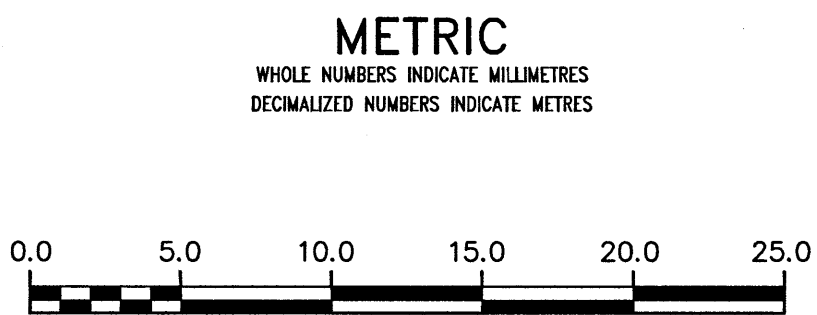
NOTE: CHAINAGES SHOWN ARE ALONG S. R. OF WOLSELEY AVENUE



PROPERTY LIMITS DELINEATION
 DELINEATION OF PROPERTY LIMITS AS SHOWN ON THIS DWG DOES NOT REPRESENT A "LEGAL SURVEY". KGS GROUP MAKES NO REPRESENTATION OR WARRANTY AS TO THE ACCURACY OF PROPERTY LIMITS DELINEATED ON THIS DWG, NOR ON THE DIMENSIONAL ACCURACY OF DWG FEATURES RELATIVE TO THOSE PROPERTY LIMITS.

NOTE: ALL VALVES TO BE INSTALLED COUNTERCLOCKWISE TO CLOSE

APEGM
 Certificate of Authorization
 KGS Group
 No. 245



WARNING
 IF POWER EQUIPMENT OR EXPLOSIVES ARE TO BE USED FOR EXCAVATION ON THIS PROJECT THE CONTRACTOR MUST:
 1) NOTIFY THE GAS COMPANY OF THE PROPOSED LOCATION OF EXCAVATION.
 2) TAKE PRECAUTION TO AVOID DAMAGE TO GAS COMPANY INSTALLATIONS.
 SEE PROVINCIAL REGULATION 210/72 FOR DETAILS

LOCATION APPROVED UNDERGROUND STRUCTURES
 SUPV. U/G STRUCTURES COMMITTEE DATE
 NOTE:
 LOCATION OF UNDERGROUND STRUCTURES AS SHOWN ARE BASED ON THE BEST INFORMATION AVAILABLE BUT NO GUARANTEE IS GIVEN THAT ALL EXISTING UTILITIES ARE SHOWN OR THAT THE GIVEN LOCATIONS ARE EXACT. CONFIRMATION OF EXISTENCE AND EXACT LOCATION OF ALL SERVICES MUST BE OBTAINED FROM THE INDIVIDUAL UTILITIES BEFORE PROCEEDING WITH CONSTRUCTION.

B.M. ELEV.	NO.	ISSUED FOR CONSTRUCTION	DATE	T.L.E.	BY
	0	ISSUED FOR CONSTRUCTION	17/05/17	T.L.E.	
		REVISIONS			

KGS GROUP CONSULTING ENGINEERS
 DESIGNED BY T.L.E.
 CHECKED BY [Signature]
 DRAWN BY D.M.W.
 APPROVED BY [Signature]
 RELEASED FOR CONSTRUCTION
 DATE 2017 05 17

ENGINEER'S SEAL

 CONSULTANT DRAWING NUMBER
 17-0107-003_C14

THE CITY OF WINNIPEG
 WATER AND WASTE DEPARTMENT
 ENGINEERING DIVISION
 2017 WATER MAIN RENEWALS (CONTRACT 11)
WOLSELEY AVENUE
 WALNUT STREET TO MARYLAND STREET
 STA 1+75 TO STA 2+50
 SHEET 15 OF 17
 CITY DRAWING NUMBER
 D-14772