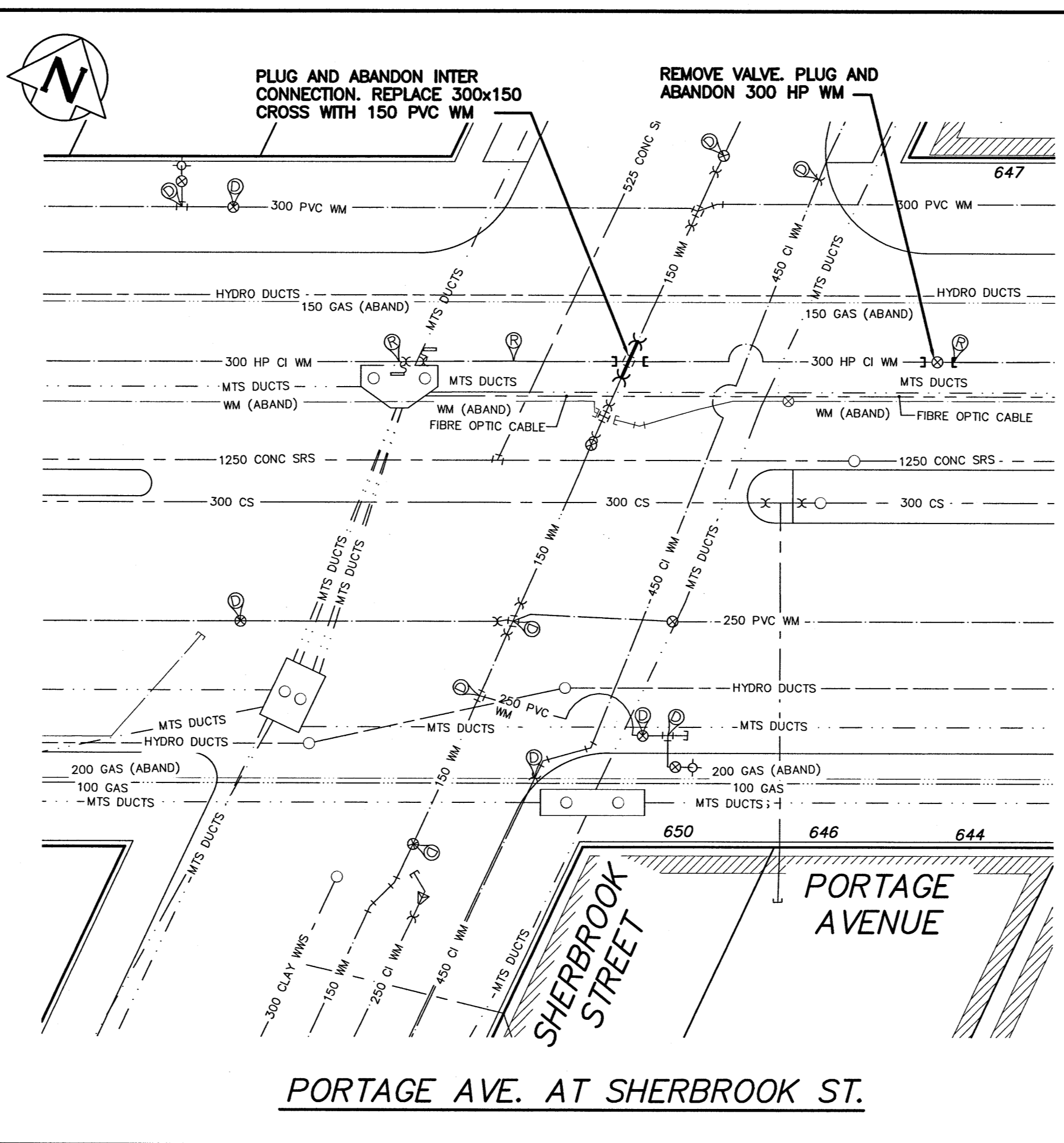
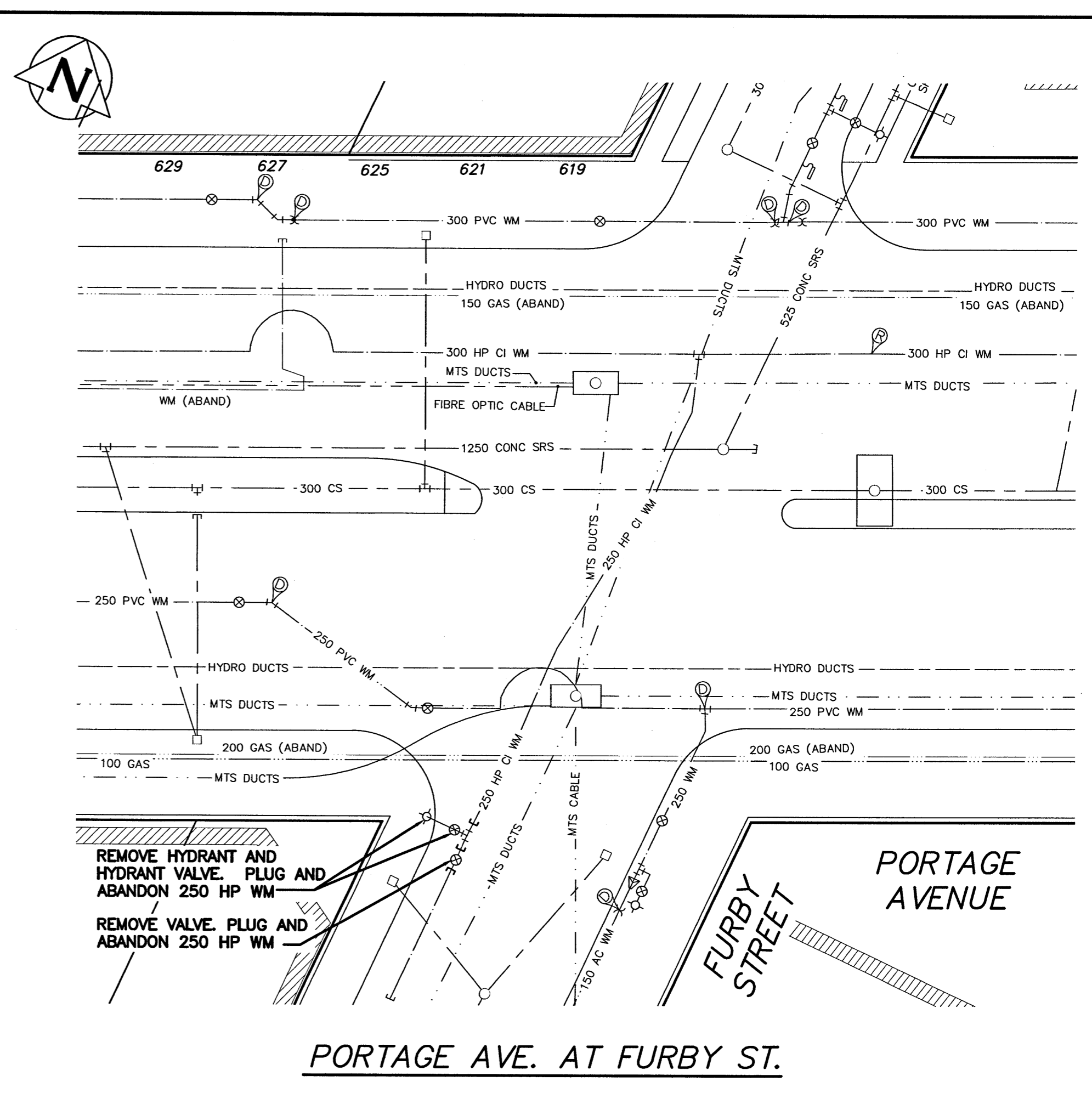


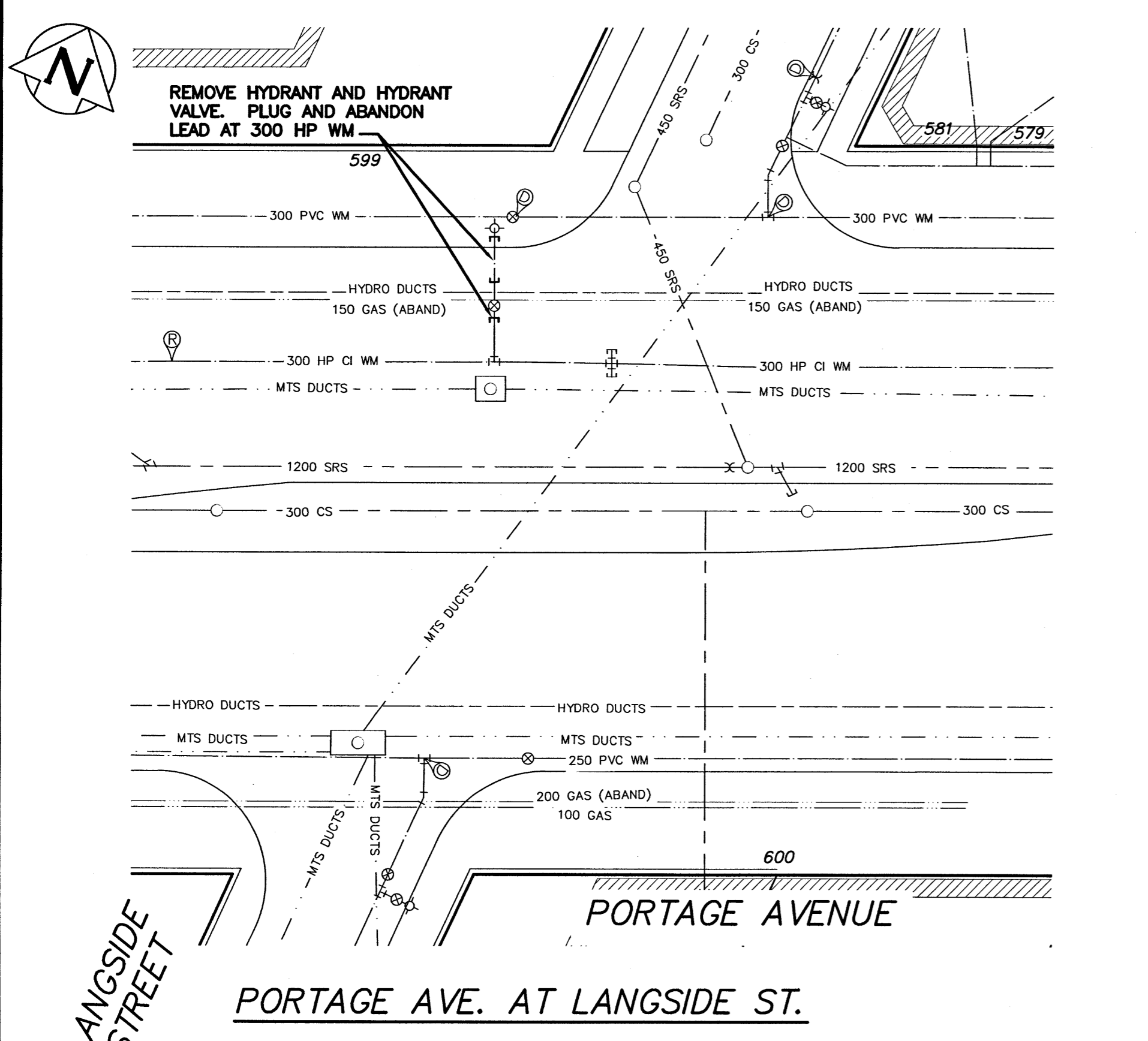
PORTAGE AVE. AT MARYLAND ST.



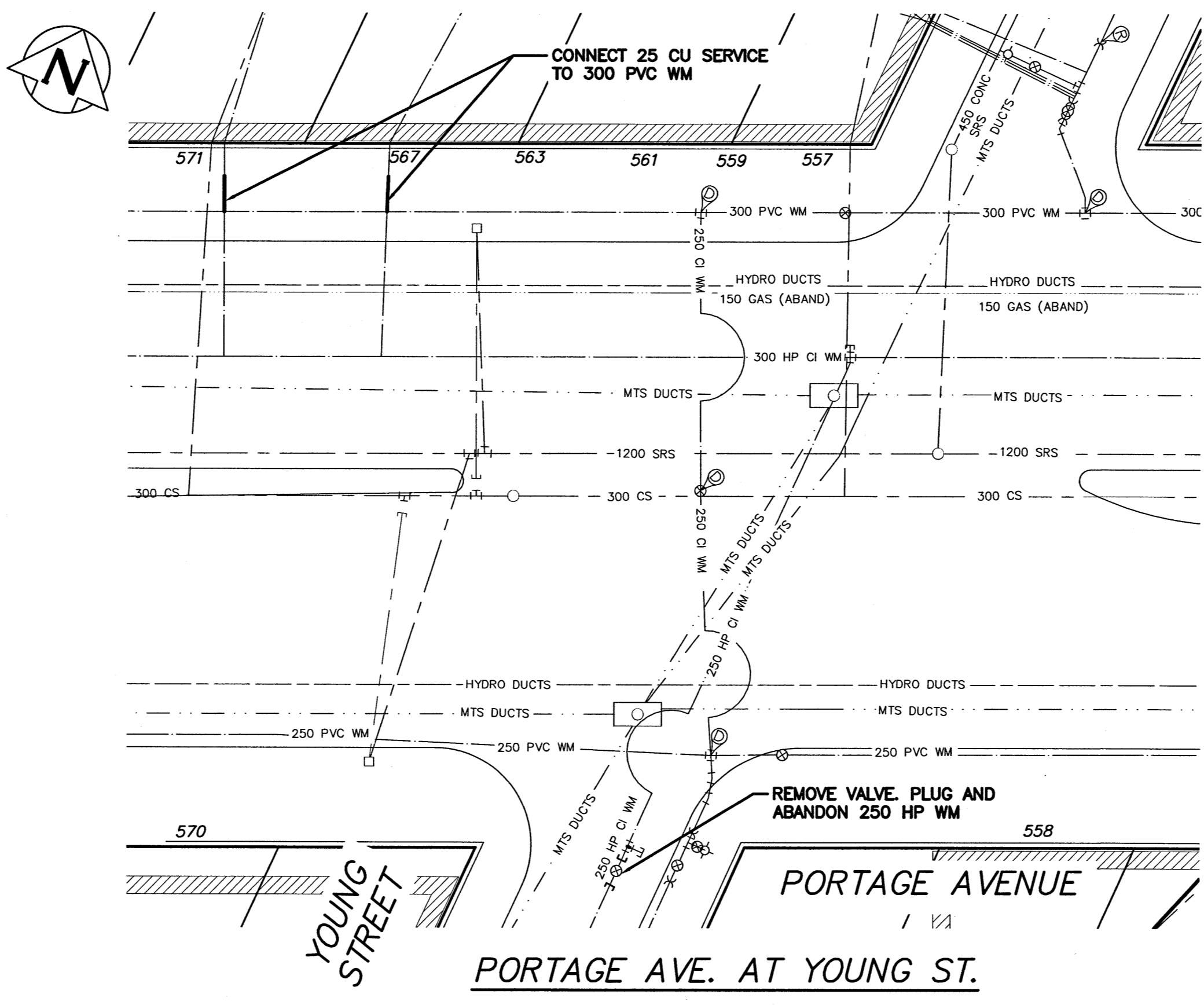
PORTAGE AVE. AT SHERBROOK ST.



PORTAGE AVE. AT FURBY ST.

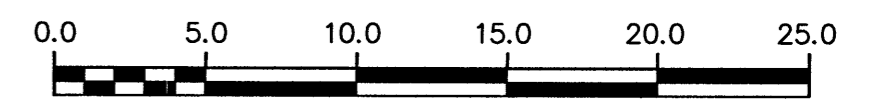
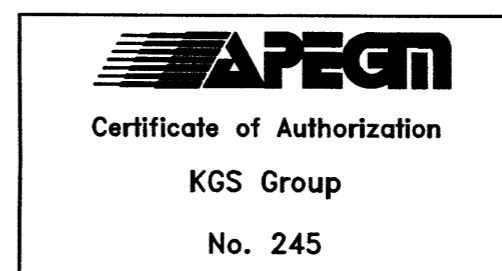


PORTAGE AVE. AT LANGSIDE ST.



PORTAGE AVE. AT YOUNG ST.

PROPERTY LIMITS DELINEATION
 DELINEATION OF PROPERTY LIMITS AS SHOWN ON THIS DWG DOES NOT REPRESENT A "LEGAL SURVEY". KGS GROUP MAKES NO REPRESENTATION OR WARRANTY AS TO THE ACCURACY OF PROPERTY LIMITS DELINEATED ON THIS DWG, NOR ON THE DIMENSIONAL ACCURACY OF DWG FEATURES RELATIVE TO THOSE PROPERTY LIMITS.



METRIC
 WHOLE NUMBERS INDICATE MILLIMETRES
 DECIMALIZED NUMBERS INDICATE METRES

NOTE: ALL VALVES TO BE INSTALLED COUNTERCLOCKWISE TO CLOSE

WARNING
 IF POWER EQUIPMENT OR EXPLOSIVES ARE TO BE USED FOR EXCAVATION ON THIS PROJECT THE CONTRACTOR MUST:
 1) NOTIFY THE GAS COMPANY OF THE PROPOSED LOCATION OF EXCAVATION.
 2) TAKE PRECAUTION TO AVOID DAMAGE TO GAS COMPANY INSTALLATIONS.
 SEE PROVINCIAL REGULATION 210/72 FOR DETAILS

LOCATION APPROVED UNDERGROUND STRUCTURES
 SUPV. U/G STRUCTURES COMMITTEE DATE
NOTE: LOCATION OF UNDERGROUND STRUCTURES AS SHOWN ARE BASED ON THE BEST INFORMATION AVAILABLE BUT NO GUARANTEE IS GIVEN THAT ALL EXISTING UTILITIES ARE SHOWN OR THAT THE GIVEN LOCATIONS ARE EXACT. CONFIRMATION OF EXISTENCE AND EXACT LOCATION OF ALL SERVICES MUST BE OBTAINED FROM THE INDIVIDUAL UTILITIES BEFORE PROCEEDING WITH CONSTRUCTION.

B.M. ELEV.	NO.	ISSUED FOR CONSTRUCTION	DATE	T.L.E.	BY
	1	ISSUED FOR CONSTRUCTION	17/05/17	T.L.E.	
		REVISIONS			

KGS GROUP CONSULTING ENGINEERS	
DESIGNED BY T.L.E.	CHECKED BY [Signature]
DRAWN BY D.M.W.	APPROVED BY [Signature]
SCALE: HORIZONTAL 1:250, VERTICAL 1:50	RELEASED FOR CONSTRUCTION
DATE 2017 05 17	DATE 5/17/19

ENGINEER'S SEAL
R.B. OFFMAN
 Member
 24701
 REGISTERED PROFESSIONAL ENGINEER

THE CITY OF WINNIPEG
 WATER AND WASTE DEPARTMENT
 ENGINEERING DIVISION
 2017 WATER MAIN RENEWALS (CONTRACT 11)
WATER MAIN ABANDONMENTS
 PORTAGE AVENUE
 MARYLAND STREET TO YOUNG STREET
 SHEET 16 OF 17
 CITY DRAWING NUMBER
D-14773