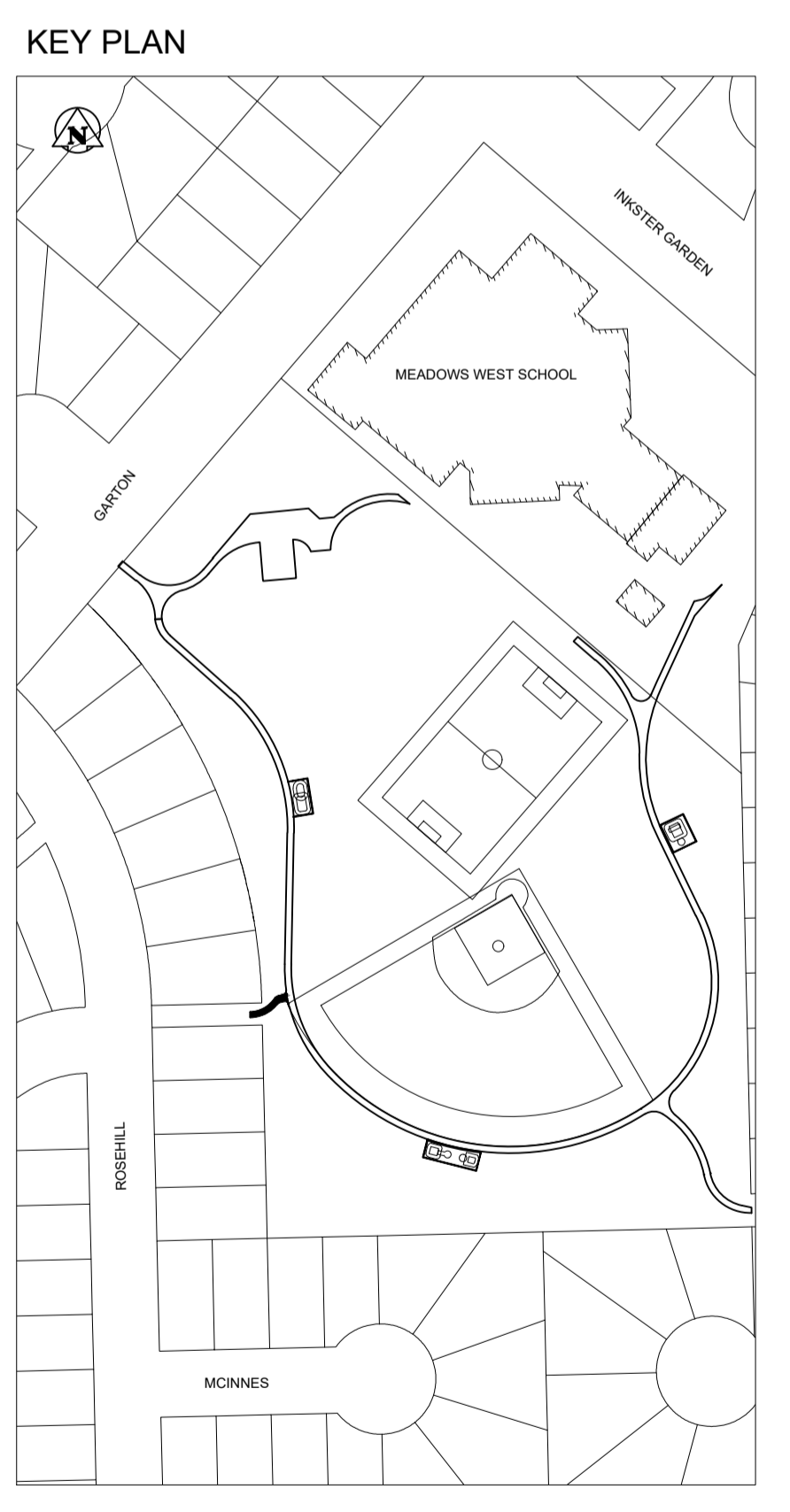
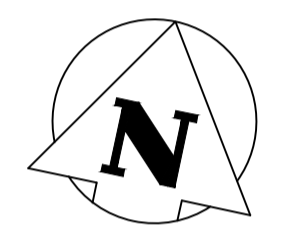
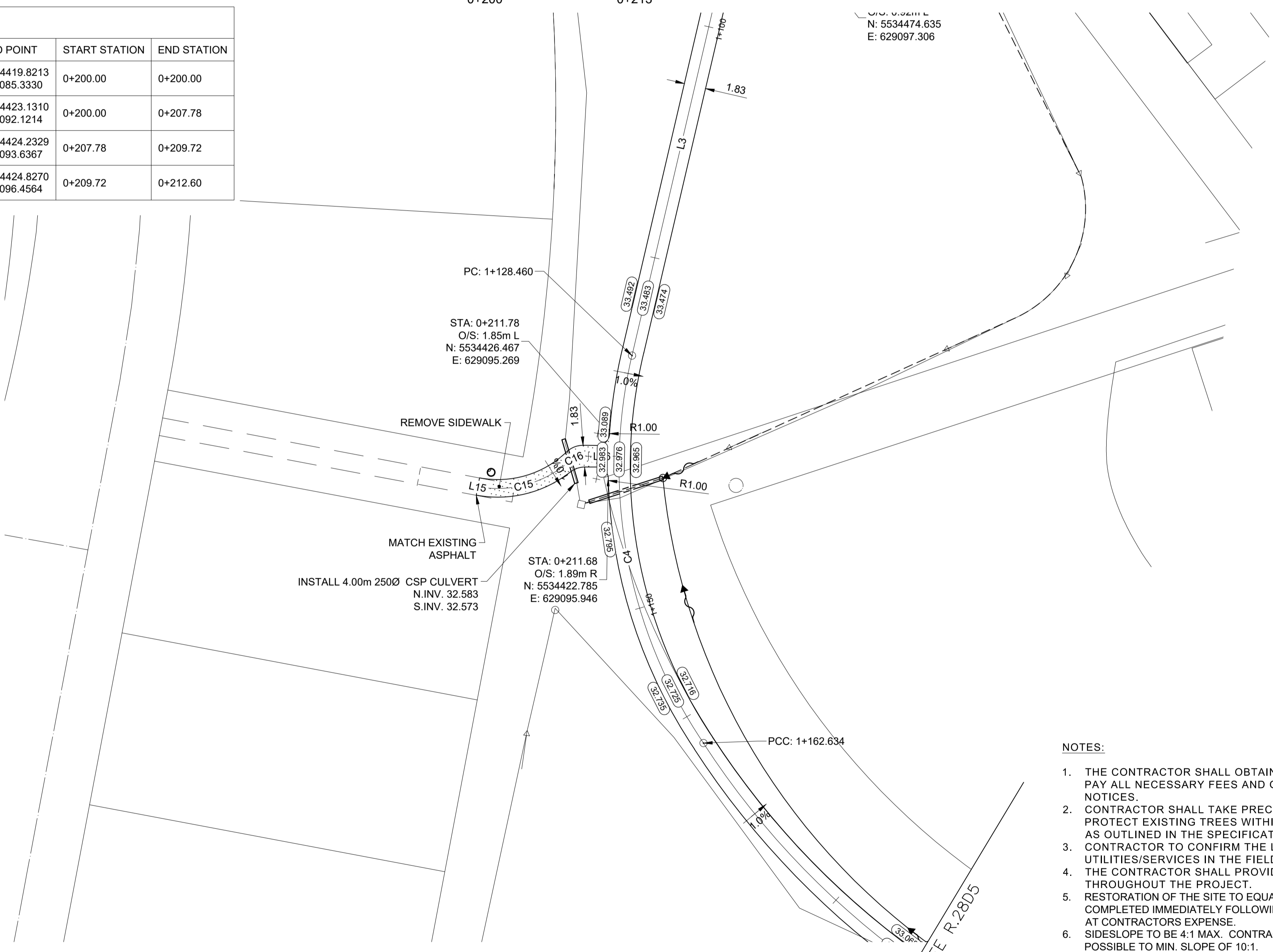


LINE/CURVE TABLE								
SEGMENT	RADIUS	LENGTH/CURVE LENGTH	TANGENT	DELTA Δ	START POINT	END POINT	START STATION	END STATION
L15		0.00			N: 5534419.8213 E: 629085.3317	N: 5534419.8213 E: 629085.3330	0+200.00	0+200.00
C15	9.22	7.78	4.139	48°21'49"	N: 5534419.8213 E: 629085.3330	N: 5534423.1310 E: 629092.1214	0+200.00	0+207.78
C16	2.17	1.94	1.038	51°03'13"	N: 5534423.1310 E: 629092.1214	N: 5534424.2329 E: 629093.6367	0+207.78	0+209.72
L16		2.88			N: 5534424.2329 E: 629093.6367	N: 5534424.8270 E: 629096.4564	0+209.72	0+212.60



**WARNING**

IF POWER EQUIPMENT OR EXPLOSIVES ARE TO BE USED FOR EXCAVATION ON THIS PROJECT THE CONTRACTOR MUST:

1. NOTIFY THE GAS COMPANY OF THE PROPOSED LOCATION OF EXCAVATION.
2. TAKE PRECAUTION TO AVOID DAMAGE TO GAS COMPANY INSTALLATIONS SEE PROVINCIAL REGULATION 210/72 FOR DETAILS.
3. OBTAIN EXCAVATION PERMITS PRIOR TO CONSTRUCTION.

CHAINAGE MEASURED ALONG  $\epsilon$  OF PATHWAY

- NOTES:**
1. THE CONTRACTOR SHALL OBTAIN ALL NECESSARY PERMITS, PAY ALL NECESSARY FEES AND GIVE ALL NECESSARY NOTICES.
  2. CONTRACTOR SHALL TAKE PRECAUTIONARY STEPS TO PROTECT EXISTING TREES WITHIN THE LIMITS OF ACTIVITIES AS OUTLINED IN THE SPECIFICATIONS
  3. CONTRACTOR TO CONFIRM THE LOCATION OF ALL UTILITIES/SERVICES IN THE FIELD PRIOR TO CONSTRUCTION THROUGHOUT THE PROJECT.
  4. THE CONTRACTOR SHALL PROVIDE CONSTRUCTION LAYOUT
  5. RESTORATION OF THE SITE TO EQUAL OR BETTER CONDITION TO BE COMPLETED IMMEDIATELY FOLLOWING CONSTRUCTION ACTIVITIES AT CONTRACTORS EXPENSE.
  6. SIDESLOPE TO BE 4:1 MAX. CONTRACTOR IS TO CONSTRUCT WHERE POSSIBLE TO MIN. SLOPE OF 10:1.

150 mm WM	WATERMAIN	150 mm WM	HYDRO	MTS	300 mm LDS	LAND DRAINAGE SEWER	300 mm LDS	LIMIT OF ASPHALT	250 mm WWS	WASTE WATER SEWER	250 mm WWS	ASPHALT	PROPERTY LINE	PROPERTY BAR	300 mm LDS	SEWER	300 mm LDS	SOUTH/EAST GUTTER	300 mm LDS	NORTH/WEST GUTTER	
⊕	HYDRANT	⊕	---	---	⊕	VALVE	⊕	---	⊕	---	⊕	---	---	---	⊕	---	⊕	---	⊕	---	⊕
⊕	VALVE	⊕	---	---	⊕	---	⊕	---	⊕	---	⊕	---	---	---	⊕	---	⊕	---	⊕	---	⊕
⊕	LAND DRAINAGE SEWER	⊕	---	---	⊕	---	⊕	---	⊕	---	⊕	---	---	---	⊕	---	⊕	---	⊕	---	⊕
⊕	WASTE WATER SEWER	⊕	---	---	⊕	---	⊕	---	⊕	---	⊕	---	---	---	⊕	---	⊕	---	⊕	---	⊕
⊕	MANHOLE	⊕	---	---	⊕	---	⊕	---	⊕	---	⊕	---	---	---	⊕	---	⊕	---	⊕	---	⊕
⊕	CATCH BASIN	⊕	---	---	⊕	---	⊕	---	⊕	---	⊕	---	---	---	⊕	---	⊕	---	⊕	---	⊕
⊕	CURB INLET	⊕	---	---	⊕	---	⊕	---	⊕	---	⊕	---	---	---	⊕	---	⊕	---	⊕	---	⊕
⊕	HYDRO POLES	⊕	---	---	⊕	---	⊕	---	⊕	---	⊕	---	---	---	⊕	---	⊕	---	⊕	---	⊕
⊕	LAMP STANDARD	⊕	---	---	⊕	---	⊕	---	⊕	---	⊕	---	---	---	⊕	---	⊕	---	⊕	---	⊕
⊕	GAS	⊕	---	---	⊕	---	⊕	---	⊕	---	⊕	---	---	---	⊕	---	⊕	---	⊕	---	⊕
⊕	LEGEND - PLAN	⊕	---	---	⊕	---	⊕	---	⊕	---	⊕	---	---	---	⊕	---	⊕	---	⊕	---	⊕
⊕	LEGEND - PROFILE	⊕	---	---	⊕	---	⊕	---	⊕	---	⊕	---	---	---	⊕	---	⊕	---	⊕	---	⊕

**UNDERGROUND STRUCTURES**

SUPV. U/G STRUCTURES COMMITTEE

DATE

**NOTE:**  
LOCATION OF UNDERGROUND STRUCTURES AS SHOWN ARE BASED ON THE BEST INFORMATION AVAILABLE, BUT NO GUARANTEE IS GIVEN THAT ALL EXISTING UTILITIES ARE SHOWN OR THAT THE GIVEN LOCATIONS ARE EXACT. CONFIRMATION OF EXISTENCE AND EXACT LOCATION OF ALL SERVICES MUST BE OBTAINED FROM THE INDIVIDUAL UTILITIES BEFORE PROCEEDING WITH CONSTRUCTION.

B.M.	CENTER OF MH AT STA 1+148 BEHIND 26 ROSE HILL WAY	ELEV.
	232.107	

URBAN DESIGN DIVISION PARKS PLANNING & DEVELOPMENT			
DESIGNED BY	PRD	CHECKED BY	IL
DRAWN BY	PRD	APPROVED BY	SP
HOR. SCALE:	1 : 250	RELEASED FOR CONSTRUCTION	
VERTICAL:	1 : 10	DATE	
DATE	17/04/07		

PROFESSIONAL'S SEAL

**PRELIMINARY**

NOT FOR CONSTRUCTION

CONSULTANT PROJECT NUMBER

N/A

**THE CITY OF WINNIPEG**  
PLANNING, PROPERTY & DEVELOPMENT DEPARTMENT

**ROSEHILL PARK**  
FITNESS PATH

ROSEHILL PARK - 186 GARTON AVE.  
HORIZONTAL & VERTICAL ALIGNMENT  
STA 0+200 TO STA 0+212

BID OPPORTUNITY NUMBER  
298-2017

SHEET 9 OF 12

CITY DRAWING NUMBER  
R.28D9

V:\Design\Branch\Projects\2016\_33\_Rosehill\_Paths\0300\_drawing\0305\_working\sheet\_files\ROSEHILL-202-2017.dwg 4/7/2017 2:16 PM