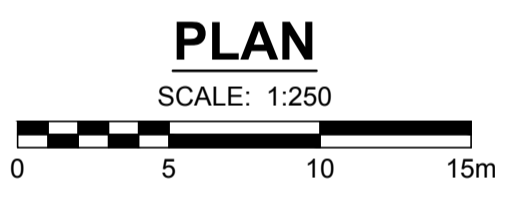


- NOTES**
- ADJUST MH AND CB RIMS TO NEW GRADES.
 - CONTRACTOR TO REGRADE/RENEW EXISTING PRIVATE SIDEWALKS TO LIMITS AS SHOWN. SIDEWALKS TO BE RENEWED WITH CONCRETE UNLESS NOTED OTHERWISE.
 - CONTRACTOR TO TAKE PRECAUTIONARY STEPS TO PROTECT EXISTING TREES WITHIN THE LIMITS OF CONSTRUCTION FROM DAMAGE FROM CONSTRUCTION ACTIVITIES AS OUTLINED IN THE SPECIFICATIONS.
 - MODIFIED BARRIER CURB TO BE CONSTRUCTED AT ALL INTERSECTION RADII, BACK LANE RADII AND BULLNOSES.
 - CONTRACTOR TO CONFIRM THE LOCATION OF ALL UTILITIES/SERVICES IN THE FIELD PRIOR TO CONSTRUCTION.
 - ADD 200.000m TO ABBREVIATED ELEVATIONS TO OBTAIN GEODETIC ELEVATIONS.
 - CB SD-024 OFFSETS ARE DIMENSIONED TO BOC. CB SD-025 OFFSETS ARE DIMENSIONED O.C.
 - ALL DIMENSIONS TO BACK OF CURB.



CONTROL LINE GEOMETRY										
NUMBER	LENGTH	RADIUS	DELTA	TANGENT	START STATION	NORTHING	EASTING	END STATION	NORTHING	EASTING
L1	298.902				0+100.000	9712.188	7908.583	0+398.902	9968.477	8062.397
S1	76.200	873.222	A=257.952		0+398.902	9968.477	8062.397	0+475.102	10033.231	8102.551
C1	381.018	873.222	25°00'01"	193.590	0+475.102	10033.231	8102.551	0+856.120	10295.954	8374.328
S2	76.200	INFINITY	A=257.952		0+856.120	10295.954	8374.328	0+932.320	10333.893	8440.404
L2	1434.750				0+932.320	10333.893	8440.404	2+367.070	11030.123	9694.905
C2	98.307	284.988	19°45'51"	49.647	2+367.070	11030.123	9694.905	2+465.378	11062.208	9787.314
L4	19.023				2+465.378	11062.208	9787.314	2+484.401	11065.271	9806.088

SPIRAL TABLE							
SPIRAL	A VALUE	RADIUS IN	RADIUS OUT	LENGTH	ST	LT	θs
S1	257.952	INFINITY	873.222	76.200	25.405	50.805	002°30'00"
S2	257.952	873.222	INFINITY	76.200	25.405	50.805	002°30'00"

SURVEY BAR-HORIZONTAL CONTROL POINTS-PROJECT COORDINATES					NAD83 DATUM		
CONTROL POINT	LOCATION	NORTHING	EASTING	ELEVATION	NORTHING	EASTING	ELEVATION
#1	SURVEY BAR @ NW CRN SCURFIELD BLVD AND KENASTON BLVD	8111.289	6719.050	232.836	5519682.165	629668.177	-
#2	SURVEY BAR @ SW CRN MCGILLIVRAY BLVD AND KENASTON BLVD	8689.596	6400.140	233.484	5520260.348	629349.381	-

NOTE: THE PROJECT DRAWINGS HAVE A SCALE FACTOR OF 1.000246876 APPLIED TO LBIS INFORMATION TO MATCH LOCAL SURVEYED PROJECT COORDINATES

MCGILLIVRAY BOULEVARD GEODETIC BENCHMARK-VERTICAL CONTROL		
GBM	LOCATION	ELEVATION
65-024/81RG16	S Side McGillivray Blvd, W of Vincent St. in MB Hydro Transmission line, Tbit in 7.60m Conc Pile, 27.9m W of CL lane Pavt, W of Vincent St. & 1.5m S of N Curb Line of McGillivray Pl, produced from the East.	232.001m

METRIC
 WHOLE NUMBERS INDICATE MILLIMETRES
 DECIMALIZED NUMBERS INDICATE METRES

EXISTING	NEW	EXISTING	NEW	EXISTING	NEW	EXISTING	NEW

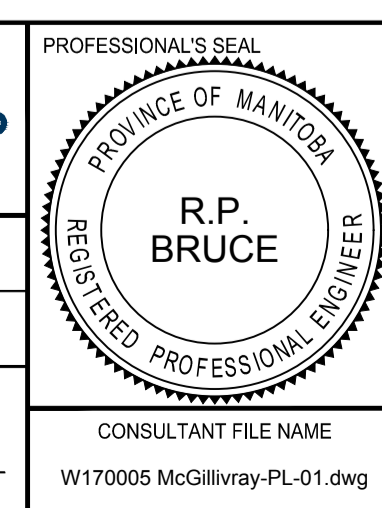
LOCATION APPROVED
 UNDERGROUND STRUCTURES

DATE: _____

NOTE:
 LOCATION OF UNDERGROUND STRUCTURES AS SHOWN ARE BASED ON THE BEST INFORMATION AVAILABLE BUT NO GUARANTEE IS GIVEN THAT ALL EXISTING UTILITIES ARE SHOWN OR THAT THE GIVEN LOCATIONS ARE EXACT. CONFIRMATION OF EXISTENCE AND EXACT LOCATION OF ALL SERVICES MUST BE OBTAINED FROM THE INDIVIDUAL UTILITIES BEFORE PROCEEDING WITH CONSTRUCTION.

No.	REVISIONS	DATE	BY
C	REVISED FOR ADDENDUM NO. 1	17/06/22	JGK
B	ISSUED FOR TENDER	17/06/20	JGK
A	ISSUED FOR CLIENT REVIEW	17/06/09	JGK

DESIGNED BY	WRJ	CHECKED BY	RPB
DRAWN BY	DID, DML	APPROVED BY	BWB
DATE	17/06/09	RELEASED FOR CONSTRUCTION	



THE CITY OF WINNIPEG
 PUBLIC WORKS DEPARTMENT
 ENGINEERING DIVISION

2017 REGIONAL AND LOCAL STREET RENEWAL PROGRAM
MCGILLIVRAY BOULEVARD REHABILITATION
 WAYERLEY STREET TO PEMBINA HIGHWAY
 HORIZONTAL ALIGNMENT
 MCGILLIVRAY BLVD AT WAYERLEY ST

CITY DRAWING NUMBER: P-3482-1
 SHEET 1 OF 30
 DRAWING No. 1 REV C

BID OPPORTUNITY No. 300-2017