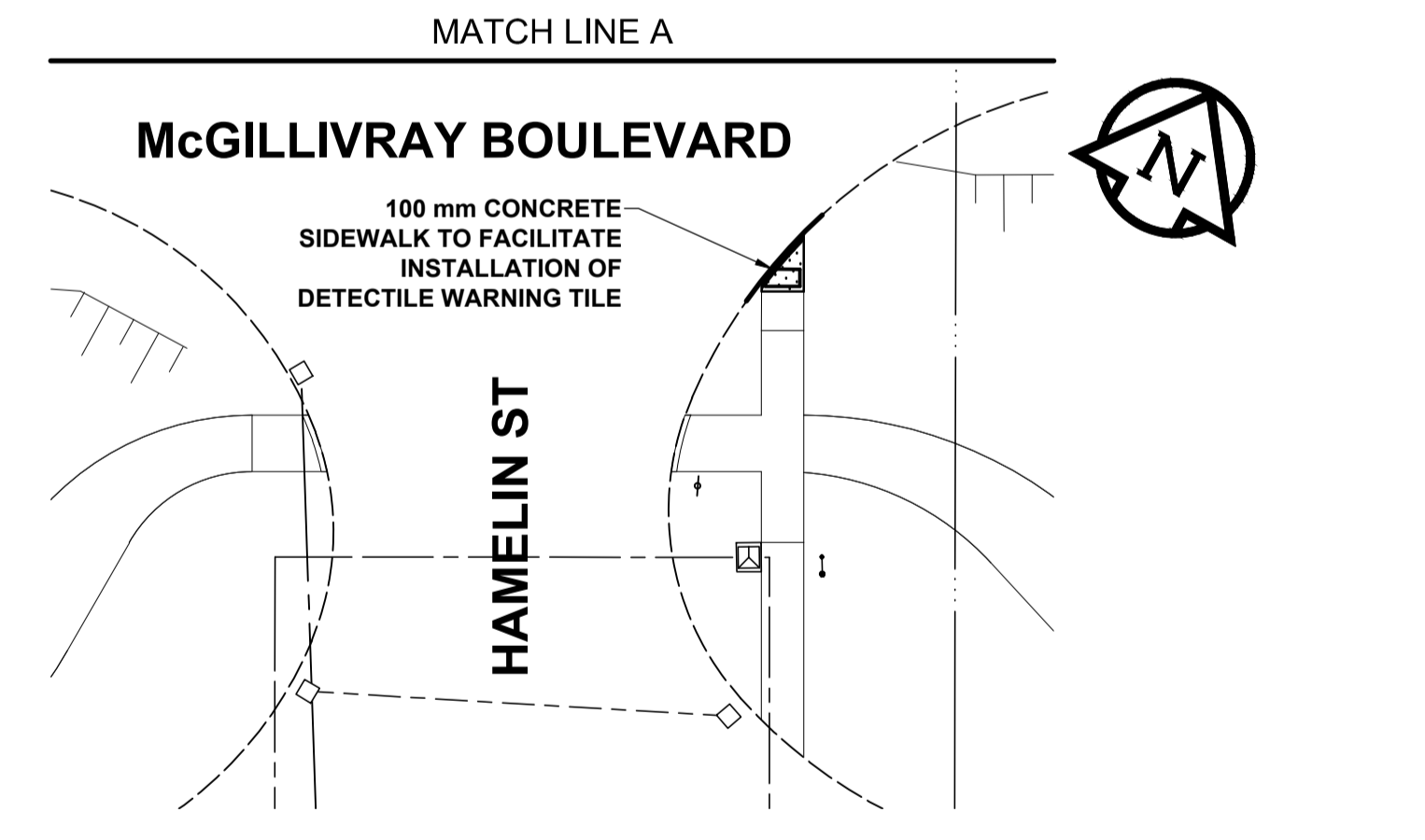
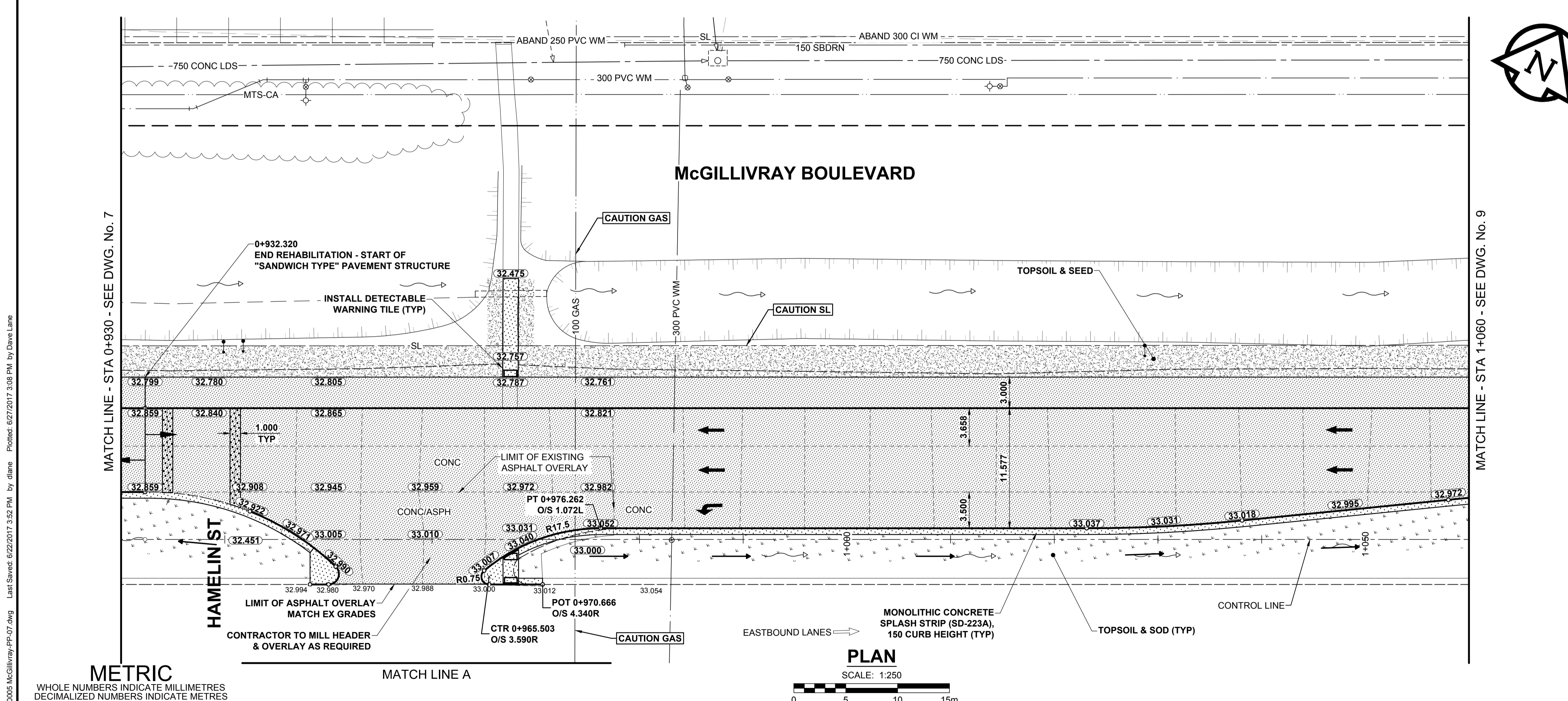


- NOTES**
- ADJUST MH AND CB RIMS TO NEW GRADES.
 - CONTRACTOR TO REGRADE/RENEW EXISTING PRIVATE SIDEWALKS TO LIMITS AS SHOWN. SIDEWALKS TO BE RENEWED WITH CONCRETE UNLESS NOTED OTHERWISE.
 - CONTRACTOR TO TAKE PRECAUTIONARY STEPS TO PROTECT EXISTING TREES WITHIN THE LIMITS OF CONSTRUCTION FROM DAMAGE FROM CONSTRUCTION ACTIVITIES AS OUTLINED IN THE SPECIFICATIONS.
 - MODIFIED BARRIER CURB TO BE CONSTRUCTED AT ALL INTERSECTION RADII, BACK LANE RADII AND BULLNOSES.
 - CONTRACTOR TO CONFIRM THE LOCATION OF ALL UTILITIES/SERVICES IN THE FIELD PRIOR TO CONSTRUCTION.
 - ADD 200.000m TO ABBREVIATED ELEVATIONS TO OBTAIN GEODETIC ELEVATIONS.
 - CB SD-024 OFFSETS ARE DIMENSIONED TO BOC. CB SD-025 OFFSETS ARE DIMENSIONED O/C.
 - ALL DIMENSIONS TO BACK OF CURB.



METRIC
WHOLE NUMBERS INDICATE MILLIMETRES
DECIMALIZED NUMBERS INDICATE METRES

EXISTING	LEGEND - PLAN	NEW	EXISTING	LEGEND - PLAN	NEW
---	GAS	○	MANHOLE	●	CONCRETE PAVEMENT
○	MTS / PEDESTAL	□	CATCH BASIN / CATCH PIT	■	CONC SIDEWALK / MEDIAN
□	HYDRO / CABINET	△	CURB INLET WITH BOX	▲	ASPHALT PAVEMENT
---	CATV / FIBRE OPTIC	○	TREE	○	PAVING STONE
---	TRAFFIC SIGNALS / PIT	⊕	TEST HOLE	⊕	GRAVEL
---	LAND DRAINAGE SEWER	⊕	PROPERTY LINE	---	RAMP CURB
---	SANITARY/COMBINED SEWER	⊕	SURVEY BAR	---	PLANING / REMOVAL
---	CB LEAD / SSP / DCP	---	FENCE	---	
---	WATER MAIN	---	BOC / EDGE OF PAVEMENT	---	
---	SUBDRAIN	---	ELEVATION	(33.333)	
---	DITCH	---	TRAFFIC SIGN	---	
---		---		---	

---	CONCRETE PAVEMENT	---	LOCATION APPROVED UNDERGROUND STRUCTURES
---	CONC SIDEWALK / MEDIAN	---	DATE
---	ASPHALT PAVEMENT	---	DATE
---	PAVING STONE	---	DATE
---	GRAVEL	---	DATE
---	RAMP CURB	---	DATE
---	PLANING / REMOVAL	---	DATE

NOTE:
LOCATION OF UNDERGROUND STRUCTURES AS SHOWN ARE BASED ON THE BEST INFORMATION AVAILABLE BUT NO GUARANTEE IS GIVEN THAT ALL EXISTING UTILITIES ARE SHOWN OR THAT THE GIVEN LOCATIONS ARE EXACT. CONFIRMATION OF EXISTENCE AND EXACT LOCATION OF ALL SERVICES MUST BE OBTAINED FROM THE INDIVIDUAL UTILITIES BEFORE PROCEEDING WITH CONSTRUCTION.

BM 65-024	5. side McGillivray Blvd., W. of Vincent St., in Manitoba Hydro transmission line, 7.8 m from Centreline, 27.9 m N. of C.L. base Plan, W. of Vincent St., & 1.5 m S. of N. Curb line of McGillivray Pl., produced from the E.
ELEV 232.001 m	
C	REVISED FOR ADDENDUM NO. 1 17/06/27 JGK
B	ISSUED FOR TENDER 17/06/20 JGK
A	ISSUED FOR CLIENT REVIEW 17/06/09 JGK
No.	REVISIONS Y/M/M/D/D BY DATE

MORRISON HERSHFIELD

DESIGNED BY: WRJ
DRAWN BY: DID, DML

CHECKED BY: RPB
APPROVED BY: BWB

HOR SCALE: 1:250
VERT SCALE: 1:10

RELEASED FOR CONSTRUCTION
DATE: 17/06/09

PROFESSIONAL'S SEAL
PROVINCE OF MANITOBA
REGISTERED PROFESSIONAL ENGINEER
R.P. BRUCE
CONSULTANT FILE NAME
W170005 McGillivray-PP-07.dwg

THE CITY OF WINNIPEG
PUBLIC WORKS DEPARTMENT
ENGINEERING DIVISION

2017 REGIONAL AND LOCAL STREET RENEWAL PROGRAM
McGILLIVRAY BOULEVARD
REHABILITATION
WAVERLEY STREET TO PEMBINA HIGHWAY
HORIZONTAL AND VERTICAL ALIGNMENT
STA 0+930 TO STA 1+060

CITY DRAWING NUMBER: P-3482-8
SHEET 8 OF 30
DRAWING No. 8 REV C

BID OPPORTUNITY No. 300-2017