

- NOTES**
- ADJUST MH AND CB RIMS TO NEW GRADES.
  - CONTRACTOR TO REGRADE/RENEW EXISTING PRIVATE SIDEWALKS TO LIMITS AS SHOWN. SIDEWALKS TO BE RENEWED WITH CONCRETE UNLESS NOTED OTHERWISE.
  - CONTRACTOR TO TAKE PRECAUTIONARY STEPS TO PROTECT EXISTING TREES WITHIN THE LIMITS OF CONSTRUCTION FROM DAMAGE FROM CONSTRUCTION ACTIVITIES AS OUTLINED IN THE SPECIFICATIONS.
  - MODIFIED BARRIER CURB TO BE CONSTRUCTED AT ALL INTERSECTION RADII, BACK LANE RADII AND BULLNOSES.
  - CONTRACTOR TO CONFIRM THE LOCATION OF ALL UTILITIES/SERVICES IN THE FIELD PRIOR TO CONSTRUCTION.
  - ADD 200.000m TO ABBREVIATED ELEVATIONS TO OBTAIN GEODETIC ELEVATIONS.
  - CB SD-024 OFFSETS ARE DIMENSIONED TO BOC. CB SD-025 OFFSETS ARE DIMENSIONED O.C.
  - ALL DIMENSIONS TO BACK OF CURB.

**METRIC**  
WHOLE NUMBERS INDICATE MILLIMETRES  
DECIMALIZED NUMBERS INDICATE METRES

---	GAS	○	MANHOLE	●	CONCRETE PAVEMENT
---	MTS / PEDESTAL	□	CATCH BASIN / CATCH PIT	■	CONC SIDEWALK / MEDIAN
---	HYDRO / CABINET	△	CURB INLET WITH BOX	▲	ASPHALT PAVEMENT
---	CATV / FIBRE OPTIC	○	TREE	▲	PAVING STONE
---	TRAFFIC SIGNALS / PIT	⊕	TEST HOLE	▲	GRAVEL
---	LAND DRAINAGE SEWER	⊕	PROPERTY LINE	---	RAMP CURB
---	SANITARY/COMBINED SEWER	⊕	SURVEY BAR	---	PLANING / REMOVAL
---	CB LEAD / SSP / DCP	---	FENCE	---	
---	WATER MAIN	---	BOC / EDGE OF PAVEMENT	---	
---	SUBDRAIN	---	ELEVATION	(33.333)	
---	DITCH	---	TRAFFIC SIGN	---	
---	EXISTING	---	LEGEND - PLAN	---	
---	NEW	---	LEGEND - PLAN	---	

**LOCATION APPROVED**  
UNDERGROUND STRUCTURES

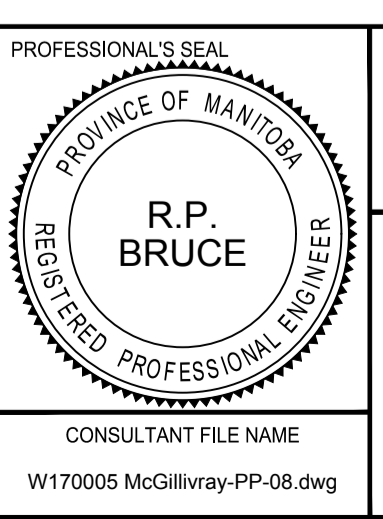
DATE: \_\_\_\_\_

**NOTE:**  
LOCATION OF UNDERGROUND STRUCTURES AS SHOWN ARE BASED ON THE BEST INFORMATION AVAILABLE BUT NO GUARANTEE IS GIVEN THAT ALL EXISTING UTILITIES ARE SHOWN OR THAT THE GIVEN LOCATIONS ARE EXACT. CONFIRMATION OF EXISTENCE AND EXACT LOCATION OF ALL SERVICES MUST BE OBTAINED FROM THE INDIVIDUAL UTILITIES BEFORE PROCEEDING WITH CONSTRUCTION.

BM 65-024	ELEV 232.001 m	5. side McGillivray Blvd., W. of Vincent St., in Manitoba Hydro transmission line, 100 m W. of Vincent St., 27.9 m W. of C.L. line of Vincent St., & 1.5 m S. of N. Curb line of McGillivray Pk., produced from the E.
C	REVISED FOR ADDENDUM NO. 1	17/06/21 JGK
B	ISSUED FOR TENDER	17/06/20 JGK
A	ISSUED FOR CLIENT REVIEW	17/06/09 JGK
No.	REVISIONS	YYMMDD BY DATE

**MORRISON HERSHFIELD**

DESIGNED BY: WRJ  
 CHECKED BY: RPB  
 DRAWN BY: DID, DML  
 APPROVED BY: BWB  
 RELEASED FOR CONSTRUCTION: 17/06/09



**THE CITY OF WINNIPEG**  
PUBLIC WORKS DEPARTMENT  
ENGINEERING DIVISION

2017 REGIONAL AND LOCAL STREET RENEWAL PROGRAM  
**McGILLIVRAY BOULEVARD**  
 REHABILITATION  
 WAVERLEY STREET TO PEMBINA HIGHWAY  
 HORIZONTAL AND VERTICAL ALIGNMENT  
 STA 1+060 TO STA 1+190

CITY DRAWING NUMBER: P-3482-9  
 SHEET 9 OF 30  
 DRAWING No. 9 REV C

BID OPPORTUNITY No. 300-2017