

- NOTES**
- ADJUST MH AND CB RIMS TO NEW GRADES.
  - CONTRACTOR TO REGRADE/RENEW EXISTING PRIVATE SIDEWALKS TO LIMITS AS SHOWN. SIDEWALKS TO BE RENEWED WITH CONCRETE UNLESS NOTED OTHERWISE.
  - CONTRACTOR TO TAKE PRECAUTIONARY STEPS TO PROTECT EXISTING TREES WITHIN THE LIMITS OF CONSTRUCTION FROM DAMAGE FROM CONSTRUCTION ACTIVITIES AS OUTLINED IN THE SPECIFICATIONS.
  - MODIFIED BARRIER CURB TO BE CONSTRUCTED AT ALL INTERSECTION RADII, BACK LANE RADII AND BULLNOSES.
  - CONTRACTOR TO CONFIRM THE LOCATION OF ALL UTILITIES/SERVICES IN THE FIELD PRIOR TO CONSTRUCTION.
  - ADD 200.000m TO ABBREVIATED ELEVATIONS TO OBTAIN GEODETIC ELEVATIONS.
  - CB SD-024 OFFSETS ARE DIMENSIONED TO BOC. CB SD-025 OFFSETS ARE DIMENSIONED O.C.
  - ALL DIMENSIONS TO BACK OF CURB.

**METRIC**  
WHOLE NUMBERS INDICATE MILLIMETRES  
DECIMALIZED NUMBERS INDICATE METRES



---	GAS	○	MANHOLE	●	CONCRETE PAVEMENT
---	MTS / PEDESTAL	□	CATCH BASIN / CATCH PIT	■	CONC SIDEWALK / MEDIAN
---	HYDRO / CABINET	△	CURB INLET WITH BOX	▲	ASPHALT PAVEMENT
---	CATV / FIBRE OPTIC	○	TREE	●	PAVING STONE
---	TRAFFIC SIGNALS / PIT	⊕	TH-12 TEST HOLE	⊕	GRAVEL
---	LAND DRAINAGE SEWER	---	PROPERTY LINE	---	RAMP CURB
---	SANITARY/COMBINED SEWER	---	SURVEY BAR	---	PLANING / REMOVAL
---	CB LEAD / SSP / DCP	---	FENCE	---	
---	WATER MAIN	---	BOC / EDGE OF PAVEMENT	---	
---	SUBDRAIN	---	ELEVATION	(33.333)	
---	DITCH	---	TRAFFIC SIGN	---	
---	EXISTING	---	LEGEND - PLAN	---	EXISTING
---	NEW	---	LEGEND - PLAN	---	NEW

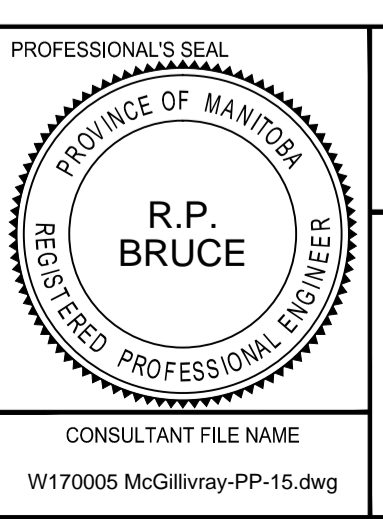
**LOCATION APPROVED**  
UNDERGROUND STRUCTURES

DATE: \_\_\_\_\_

**NOTE:**  
LOCATION OF UNDERGROUND STRUCTURES AS SHOWN ARE BASED ON THE BEST INFORMATION AVAILABLE BUT NO GUARANTEE IS GIVEN THAT ALL EXISTING UTILITIES ARE SHOWN OR THAT THE GIVEN LOCATIONS ARE EXACT. CONFIRMATION OF EXISTENCE AND EXACT LOCATION OF ALL SERVICES MUST BE OBTAINED FROM THE INDIVIDUAL UTILITIES BEFORE PROCEEDING WITH CONSTRUCTION.

BM 65-024	ELEV 232.001 m	S. side McGillivray Blvd., W. of Vincent St., in Manitoba Hydro transmission line, 7.8 m. Curb, 28.273 m. W. of Vincent St., & 1.5 m. S. of N. Curb line of McGillivray Rd., produced from the E.								
<table border="1"> <tr> <td>No.</td> <td>REVISIONS</td> <td>DATE</td> <td>BY</td> </tr> <tr> <td> </td> <td> </td> <td> </td> <td> </td> </tr> </table>			No.	REVISIONS	DATE	BY				
No.	REVISIONS	DATE	BY							

<b>MORRISON HERSHFIELD</b>	
DESIGNED BY: WRJ	CHECKED BY: RPB
DRAWN BY: DID, DML	APPROVED BY: BWB
RELEASED FOR CONSTRUCTION	
HOR SCALE: 1:250	VERT SCALE: 1:10
DATE: 17/06/09	DATE: 17/06/09



**THE CITY OF WINNIPEG**  
PUBLIC WORKS DEPARTMENT  
ENGINEERING DIVISION

2017 REGIONAL AND LOCAL STREET RENEWAL PROGRAM

**McGILLIVRAY BOULEVARD REHABILITATION**

WAVERLEY STREET TO PEMBINA HIGHWAY  
HORIZONTAL AND VERTICAL ALIGNMENT  
STA 1+970 TO STA 2+100

CITY DRAWING NUMBER: P-3482-16  
SHEET 16 OF 30  
DRAWING No. 16 REV B

BID OPPORTUNITY No. 300-2017