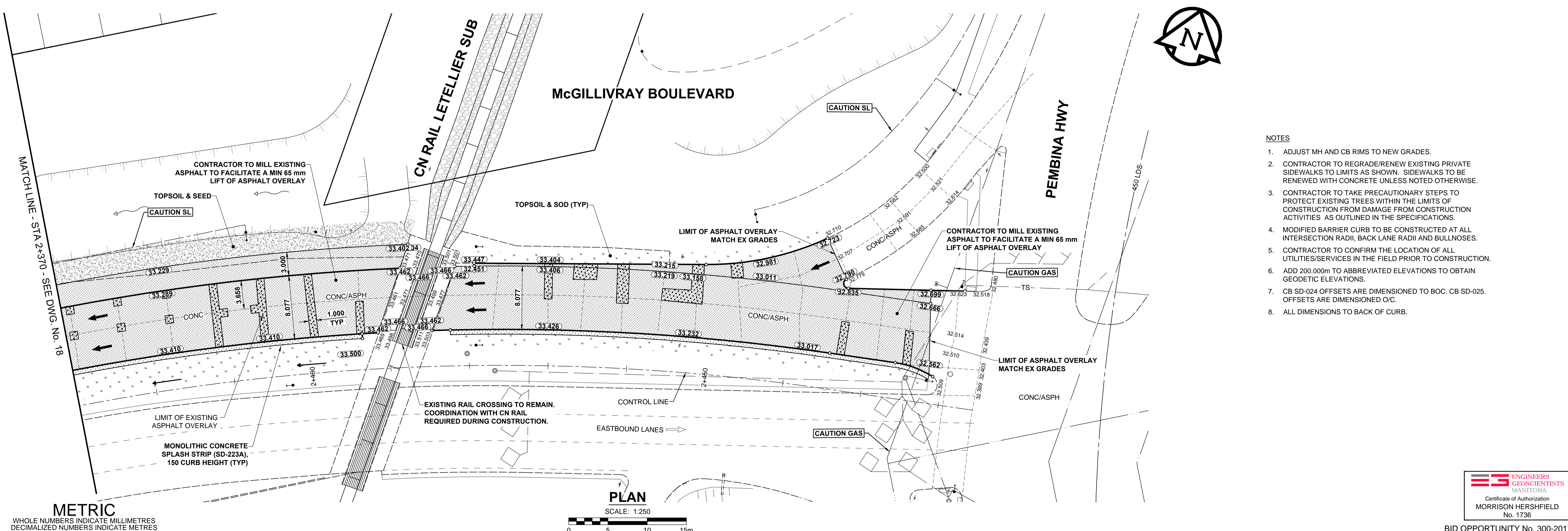
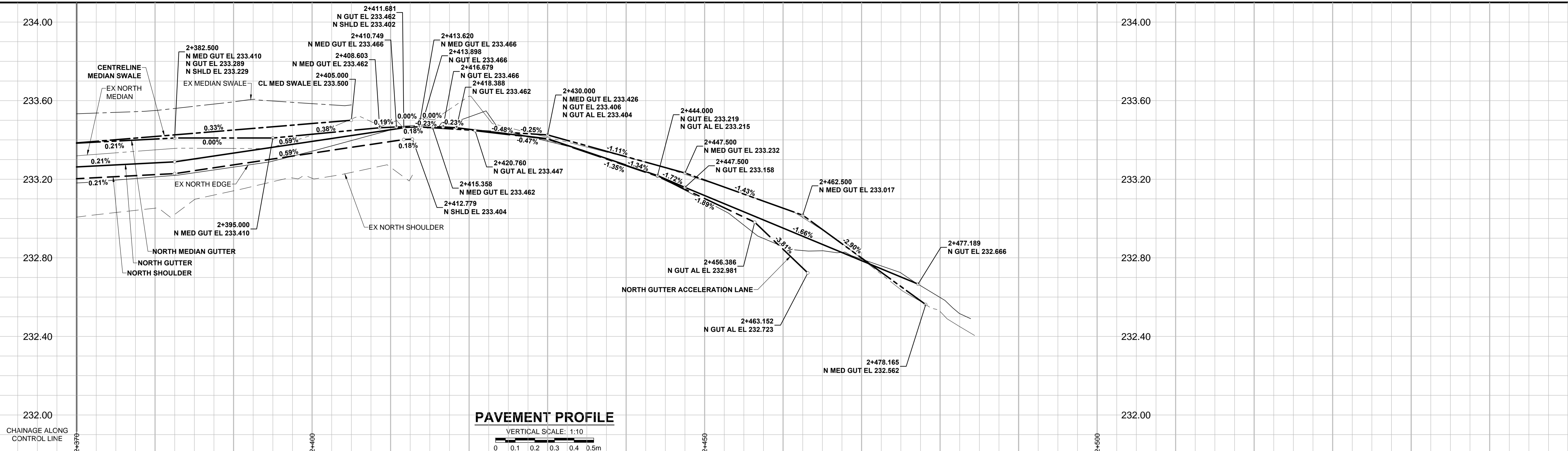


ISO A1 - 564mm x 841mm
 M:\Proj\W1700054\Drawings\06_Sheets\W170005_McGillivray-PP-18.dwg
 Last Saved: 6/19/2017 2:27 PM by Ddoszpod
 Printed: 6/19/2017 3:52 PM by Daniel Doszpod



- NOTES**
- ADJUST MH AND CB RIMS TO NEW GRADES.
 - CONTRACTOR TO REGRADE/RENEW EXISTING PRIVATE SIDEWALKS TO LIMITS AS SHOWN. SIDEWALKS TO BE RENEWED WITH CONCRETE UNLESS NOTED OTHERWISE.
 - CONTRACTOR TO TAKE PRECAUTIONARY STEPS TO PROTECT EXISTING TREES WITHIN THE LIMITS OF CONSTRUCTION FROM DAMAGE FROM CONSTRUCTION ACTIVITIES AS OUTLINED IN THE SPECIFICATIONS.
 - MODIFIED BARRIER CURB TO BE CONSTRUCTED AT ALL INTERSECTION RADII, BACK LANE RADII AND BULLNOSES.
 - CONTRACTOR TO CONFIRM THE LOCATION OF ALL UTILITIES/SERVICES IN THE FIELD PRIOR TO CONSTRUCTION.
 - ADD 200.00m TO ABBREVIATED ELEVATIONS TO OBTAIN GEODETIC ELEVATIONS.
 - CB SD-024 OFFSETS ARE DIMENSIONED TO BOC. CB SD-025 OFFSETS ARE DIMENSIONED O.C.
 - ALL DIMENSIONS TO BACK OF CURB.

METRIC
 WHOLE NUMBERS INDICATE MILLIMETRES
 DECIMALIZED NUMBERS INDICATE METRES

---	GAS	○	MANHOLE	●	CONCRETE PAVEMENT
---	MTS / PEDESTAL	□	CATCH BASIN / CATCH PIT	■	CONC SIDEWALK / MEDIAN
---	HYDRO / CABINET	△	CURB INLET WITH BOX	▲	ASPHALT PAVEMENT
---	CATV / FIBRE OPTIC	○	TREE	●	PAVING STONE
---	TRAFFIC SIGNALS / PIT	⊕	TEST HOLE	⊕	GRAVEL
---	LAND DRAINAGE SEWER	⊕	PROPERTY LINE	---	RAMP CURB
---	SANITARY/COMBINED SEWER	⊕	SURVEY BAR	---	PLANING / REMOVAL
---	CB LEAD / SSP / DCP	⊕	FENCE	---	
---	WATER MAIN	---	BOC / EDGE OF PAVEMENT	---	
---	SUBDRAIN	---	ELEVATION	(33.333)	
---	DITCH	---	TRAFFIC SIGN	(33.333)	
---	EXISTING	---	LEGEND - PLAN	---	
---	NEW	---	LEGEND - PLAN	---	

LOCATION APPROVED
 UNDERGROUND STRUCTURES

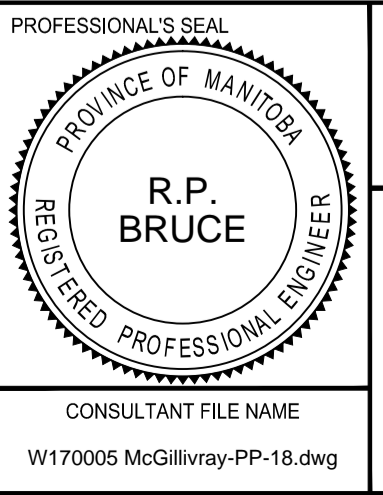
---	SUPR. U/G STRUCTURES	DATE
---	COMMITTEE	

NOTE:
 LOCATION OF UNDERGROUND STRUCTURES AS SHOWN ARE BASED ON THE BEST INFORMATION AVAILABLE BUT NO GUARANTEE IS GIVEN THAT ALL EXISTING UTILITIES ARE SHOWN OR THAT THE GIVEN LOCATIONS ARE EXACT. CONFIRMATION OF EXISTENCE AND EXACT LOCATION OF ALL SERVICES MUST BE OBTAINED FROM THE INDIVIDUAL UTILITIES BEFORE PROCEEDING WITH CONSTRUCTION.

BM 65-024	ELEV 232.001 m	S. side McGillivray Blvd., W. of Vincent St., in Manitoba Hydro transmission line, 10.78 m from Centreline, 27.9 m W. of C.L. base Point, W. of Vincent St., & 1.5 m S. of N. Curb line of McGillivray Pk, produced from the E.												
<table border="1"> <tr> <td>B</td> <td>ISSUED FOR TENDER</td> <td>17/06/20</td> <td>JGK</td> </tr> <tr> <td>A</td> <td>ISSUED FOR CLIENT REVIEW</td> <td>17/06/09</td> <td>JGK</td> </tr> <tr> <td>No.</td> <td>REVISIONS</td> <td>Y/M/MDD</td> <td>BY</td> </tr> </table>			B	ISSUED FOR TENDER	17/06/20	JGK	A	ISSUED FOR CLIENT REVIEW	17/06/09	JGK	No.	REVISIONS	Y/M/MDD	BY
B	ISSUED FOR TENDER	17/06/20	JGK											
A	ISSUED FOR CLIENT REVIEW	17/06/09	JGK											
No.	REVISIONS	Y/M/MDD	BY											

MORRISON HERSHFELD

DESIGNED BY	WRJ	CHECKED BY	RPB
DRAWN BY	DID, DML	APPROVED BY	BWB
HOR SCALE 1:250		RELEASED FOR CONSTRUCTION	
VERT SCALE 1:10		DATE	
DATE 17/06/09		DATE	



THE CITY OF WINNIPEG
 PUBLIC WORKS DEPARTMENT
 ENGINEERING DIVISION

2017 REGIONAL AND LOCAL STREET RENEWAL PROGRAM
McGILLIVRAY BOULEVARD REHABILITATION
 WAVERLEY STREET TO PEMBINA HIGHWAY
 HORIZONTAL AND VERTICAL ALIGNMENT
 STA 2+370 TO PEMBINA HWY

CITY DRAWING NUMBER P-3482-19
 SHEET 19 OF 30
 DRAWING No. REV 19 B

BID OPPORTUNITY No. 300-2017