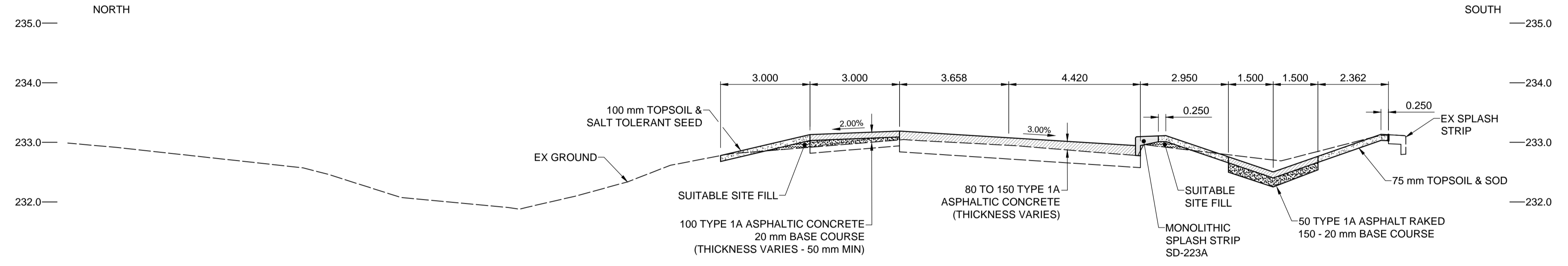
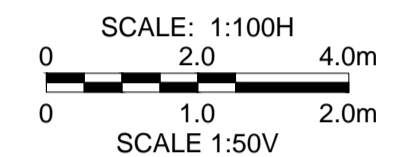
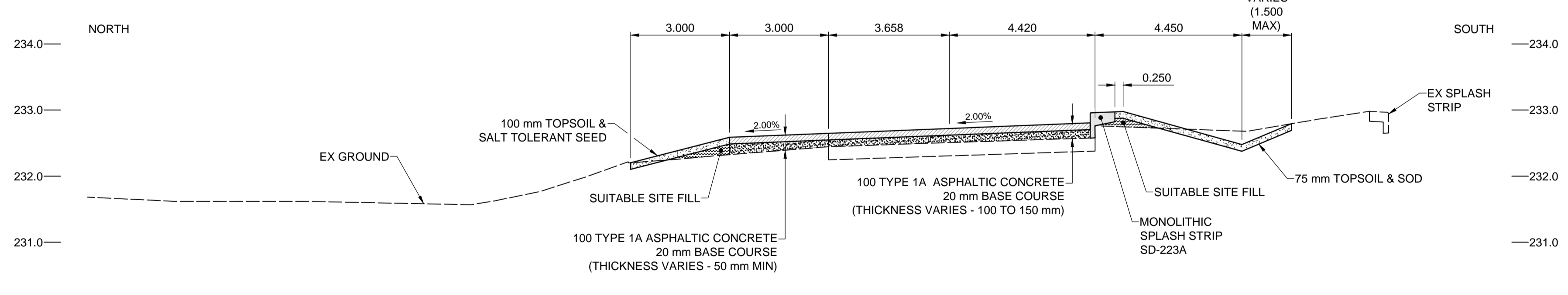
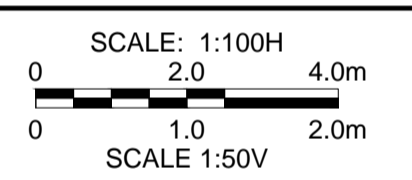


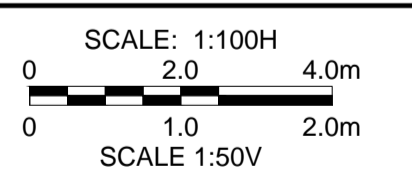
**SECTION - STA 0+612.50 - REHABILITATION**



**SECTION - STA 0+637.50 - REHABILITATION**



**SECTION - STA 1+812.50 - SANDWICH**



M:\Proj\W170005\4 Design\1 Drawings\06 Sheets\W170005 McGillivray-XS-01.dwg  
 Last Saved: 6/19/2017 2:28 PM by DDozpod  
 Plotted: 6/19/2017 3:53 PM by Daniel Doszpod

**METRIC**  
 WHOLE NUMBERS INDICATE MILLIMETRES  
 DECIMALIZED NUMBERS INDICATE METRES

<b>LOCATION APPROVED UNDERGROUND STRUCTURES</b>	
SUPR. U/G STRUCTURES COMMITTEE	DATE
<b>NOTE:</b> LOCATION OF UNDERGROUND STRUCTURES AS SHOWN ARE BASED ON THE BEST INFORMATION AVAILABLE BUT NO GUARANTEE IS GIVEN THAT ALL EXISTING UTILITIES ARE SHOWN OR THAT THE GIVEN LOCATIONS ARE EXACT. CONFIRMATION OF EXISTENCE AND EXACT LOCATION OF ALL SERVICES MUST BE OBTAINED FROM THE INDIVIDUAL UTILITIES BEFORE PROCEEDING WITH CONSTRUCTION.	

BM 65-024 ELEV 232.001 m	S. side McGillivray Blvd., W. of Vincent St., in Manitoba Hydro transmission line, 7.8 m Curb, 200 27.9 m W. of C.L. base Plan, W. of Vincent St., & 1.5 m S. of N. Curb line of McGillivray Pk, produced from the E.
B	ISSUED FOR TENDER 17/06/20 JGK
A	ISSUED FOR CLIENT REVIEW 17/06/09 JGK
No.	REVISIONS YY/MM/DD BY

<b>MORRISON HERSHFIELD</b>	
DESIGNED BY WRJ	CHECKED BY RPB
DRAWN BY DID, DML	APPROVED BY BWB
RELEASED FOR CONSTRUCTION	
HOR SCALE 1:100	VERT SCALE 1:50
DATE 17/06/09	DATE

PROFESSIONAL'S SEAL  
 PROVINCE OF MANITOBA  
 REGISTERED PROFESSIONAL ENGINEER  
**R.P. BRUCE**  
 CONSULTANT FILE NAME  
 W170005 McGillivray-XS-01.dwg

**THE CITY OF WINNIPEG**  
 PUBLIC WORKS DEPARTMENT  
 ENGINEERING DIVISION

2017 REGIONAL AND LOCAL STREET RENEWAL PROGRAM  
**McGILLIVRAY BOULEVARD REHABILITATION**  
 WAVERLEY STREET TO PEMBINA HIGHWAY  
 CROSS SECTIONS  
 A,B & C

CITY DRAWING NUMBER P-3482-20	SHEET 20 OF 30
DRAWING No.	REV
<b>20</b>	<b>B</b>